

Garvey Ave. & Monterey Pass Road

as located in January 1897
 E.T. Wright Co. Sur. by F.W. Skinner Deputy
 County Surveyors Map No. 3399

Scale - 500 ft = 1 in.

Road 60' wide

Note Book 13 pg. 25, 38.

Red Center line shows change made April 19-1897

Note Book 13-38

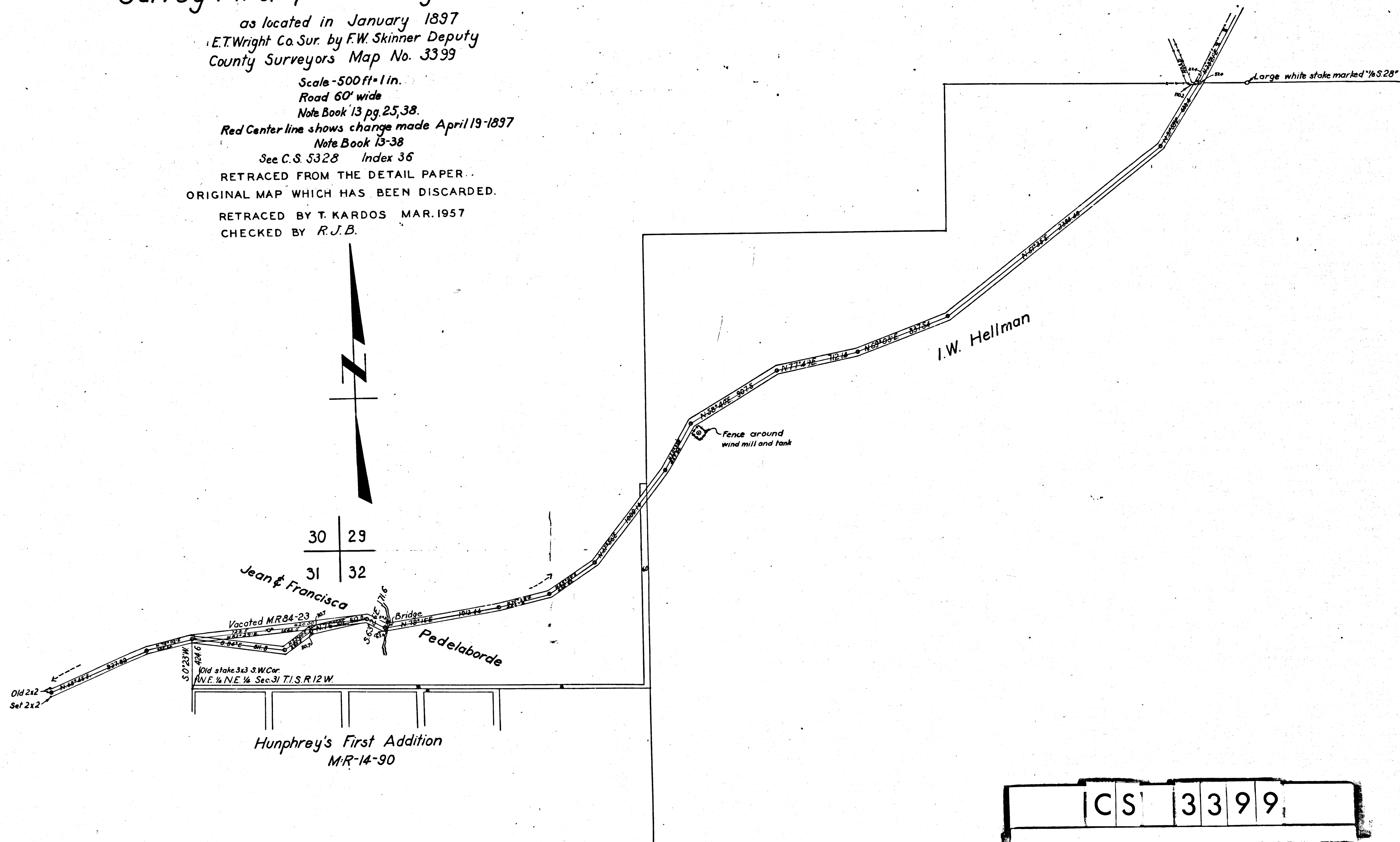
See C.S. 5328 Index 36

RETRACED FROM THE DETAIL PAPER.

ORIGINAL MAP WHICH HAS BEEN DISCARDED.

RETRACED BY T. KARDOS MAR. 1957

CHECKED BY R.J.B.



CS 3399