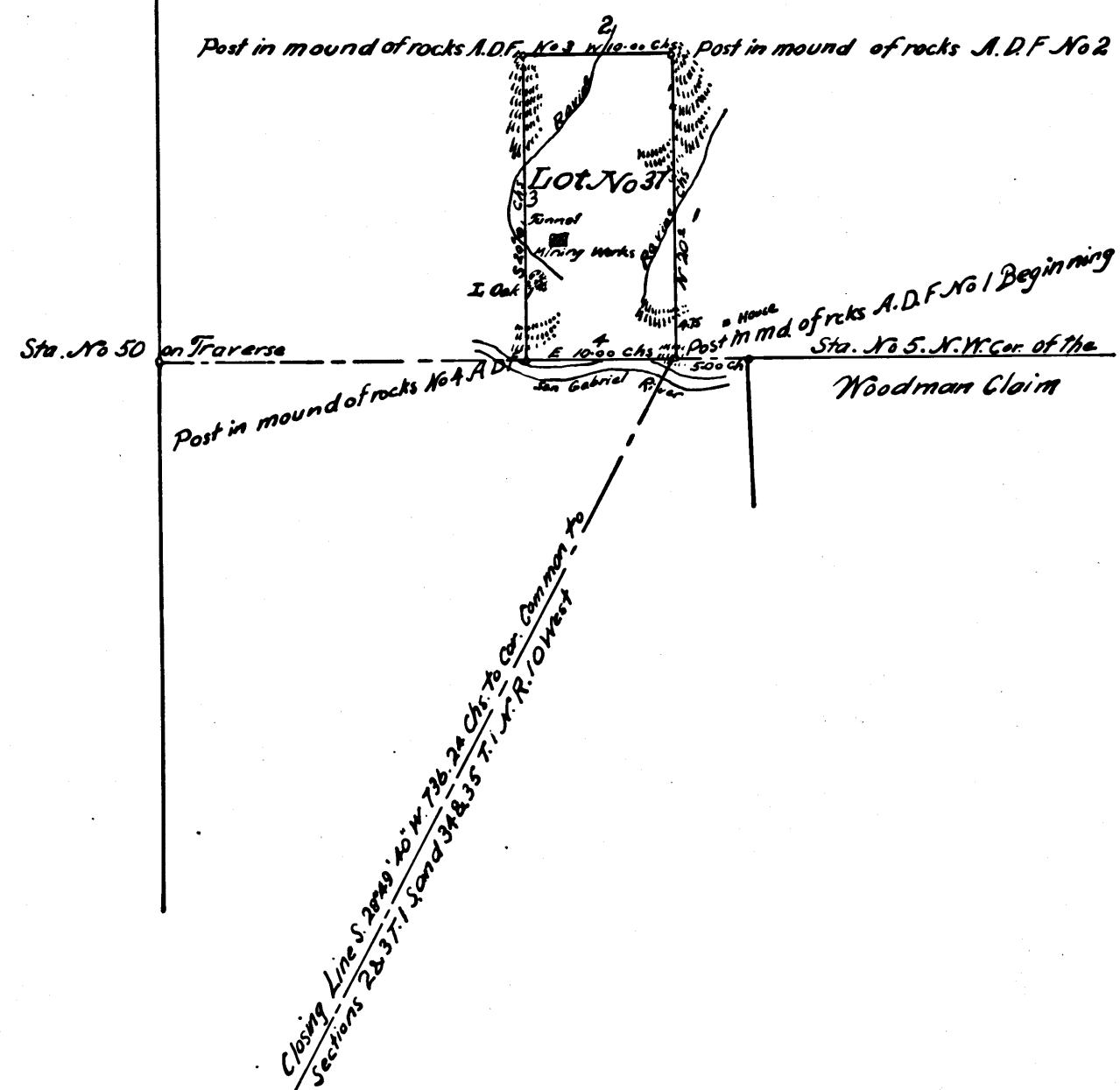


T2N.R.9W.

San Bernardino Meridian



PLAT
of the
FORD PLACER MINE

— situated in —
Los Angeles Co. California
claimed by A. D. FORD surveyed by
John Goldsworthy, Dep. Surv.

October 1872
Containing 20 Acres
scale 10 chs. = 1 inch
Var. 14° 15' E

I. M. 15

Retraced by A. Sue, April-1959
Checked by J. Block

COUNTY SURVEYORS MAP NO 3426

Certificate

J. P. Harman
County Surveyor General

CS 3426