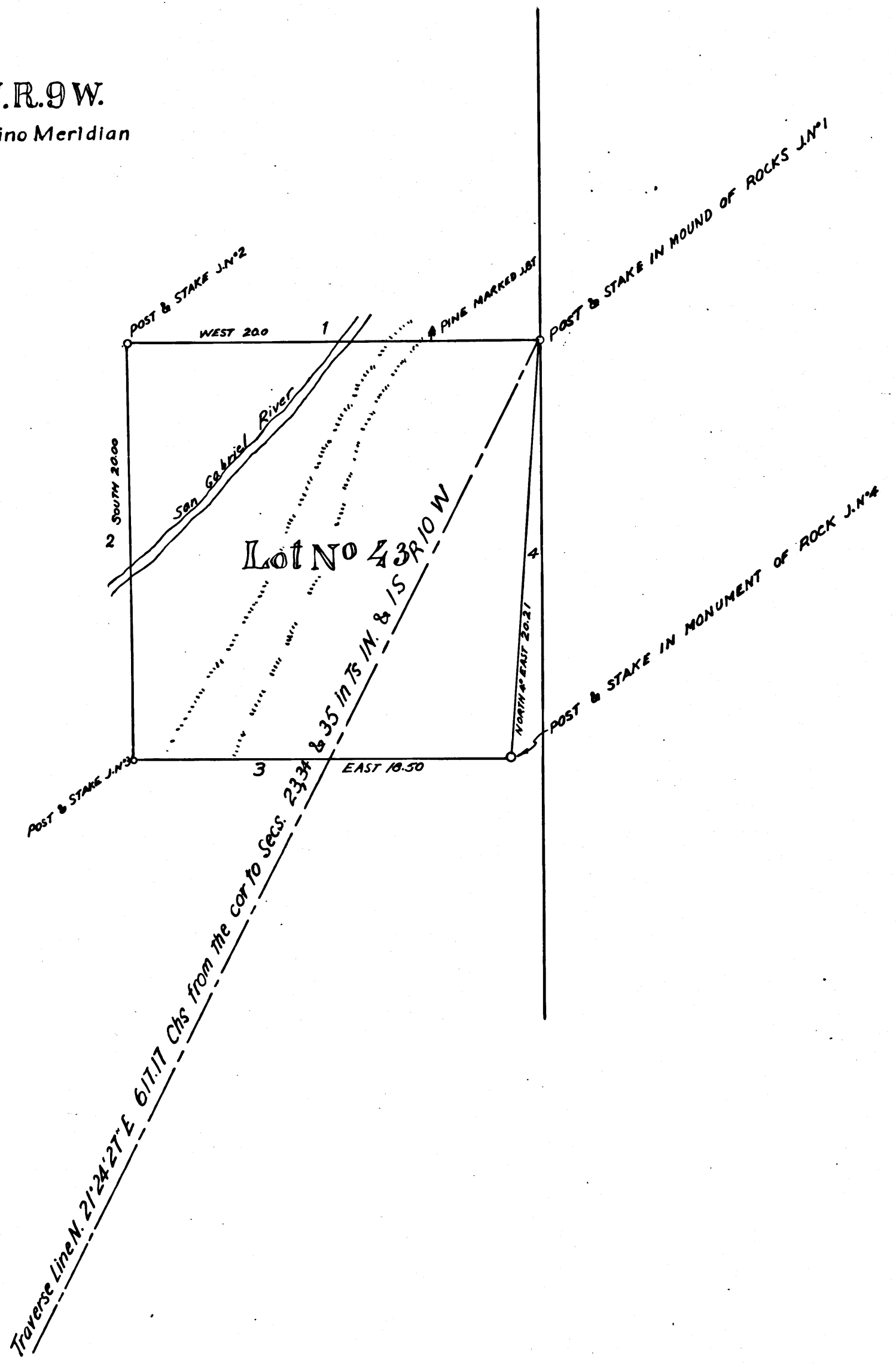


T2N.R.9W.
San Bernardino Meridian



PLAT
of the
Justice Placer Mine
Situatd in
Los Angeles County California
claimed by
W.W. WOODMAN & JACOB METZKER
Surveyed by
JOHN GOLDSWORTHY, U.S. DEP. SURV.
DECEMBER 1871
CONTAINING $38\frac{643}{1000}$ ACRES
Scale 5 chs to one inch
Var 14° 35' E
I M. 15
Retraced by A. Sue, April 1959
Checked by J. Black
COUNTY SURVEYORS MAP NO 3428

Certificate
L. R. Hansen Pugh
U.S. Surv. Gen. for Cal.

	CS		3	4	2	8	
--	----	--	---	---	---	---	--