

Road on North Line of Wicks Sub.

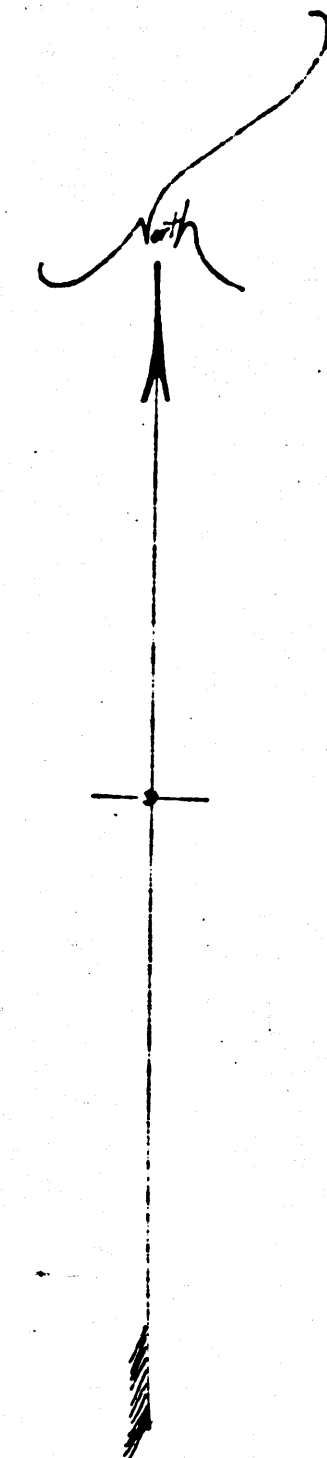
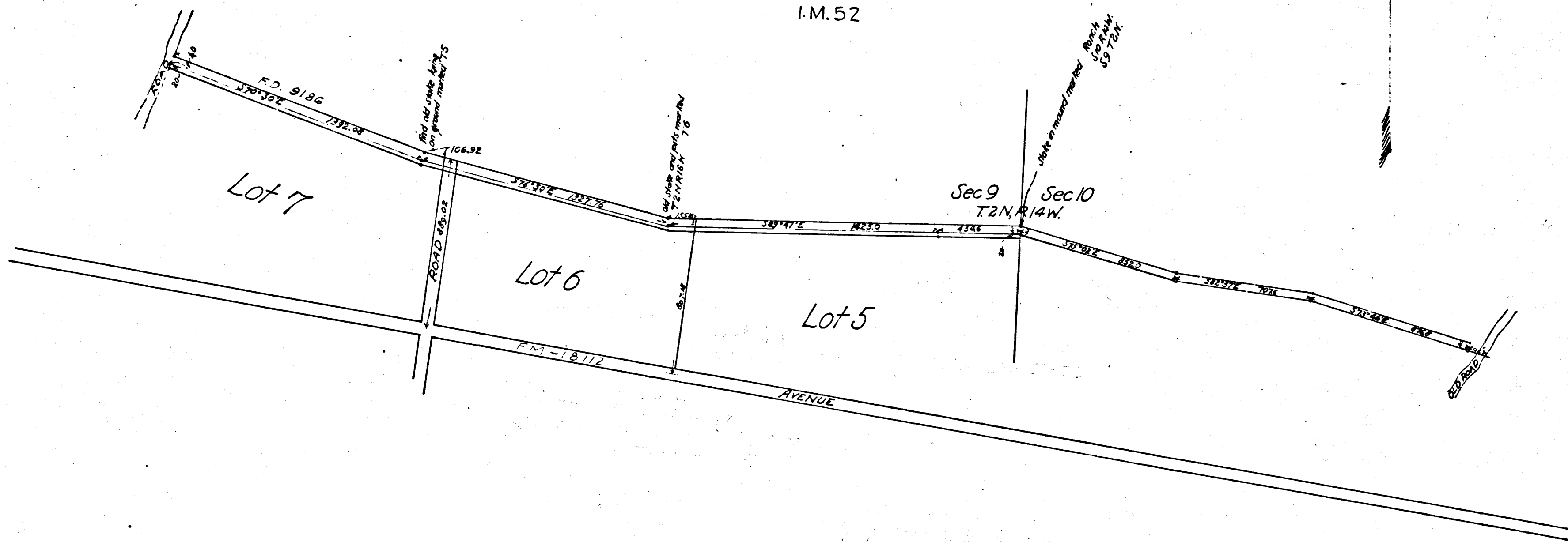
Tejunga Rancho

as surveyed under instructions of the
Hon. Board of Supervisors
in November 1897.

E. T. Wright, County Surveyor
by H. B. Nicholson, Deputy.

Scale 400' = 1"
F.B. 12-68

COUNTY SURVEYORS MAP NO. 3440
I.M. 52



THIS CLOTH PRINT MADE FROM A VAN DYKE
NEGATIVE WHICH WAS PROCESSED FROM AN
AUTO-POSITIVE PRINT OF THE ORIGINAL PAPER
MAP. THE AUTO-POSITIVE PRINT & NEGATIVE
ARE AT VAULT.
THE ORIGINAL PAPER MAP WAS DISCARDED.
RETOUCHED BY J.B. OCT. 1957
CHECKED BY E. P.

CS 3440