

Vernon Avenue Widening

SOTO STREET
 from ~~Boyle Avenue~~ to L.A.T. Ry.
 Surveyed under instructions from the
 Honorable Board of Supervisors
 Dec. 29, 1897 by E.T. Wright, Co. Sur.
 T. 2 S. R. 13 W.

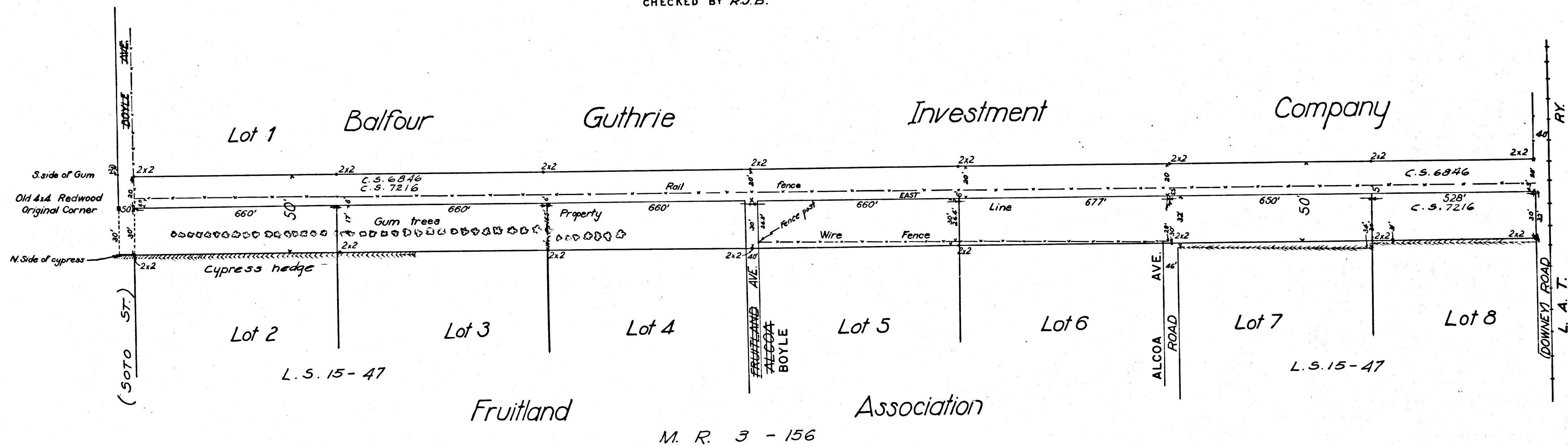
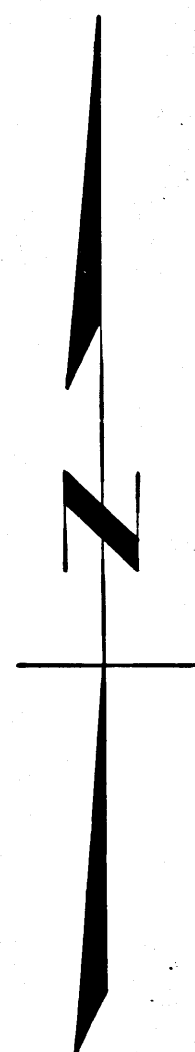
Viewers { E.T. Wright
 E.H. Morgan
 Geo W. Townsend

COUNTY SURVEYORS MAP NO. 3459

SCALE { HORIZONTAL 200'-1"
 VERTICAL 40'-1"

FB. 12-78 Index 7 C.S. 3459

RETRACED FROM THE ASSESSOR BOOK, PAPER
 ORIGINAL MAP WHICH HAS BEEN DISCARDED
 RETRACED BY T. KARDOS, APRIL, 1957.
 CHECKED BY R.J.B.



CS 3459