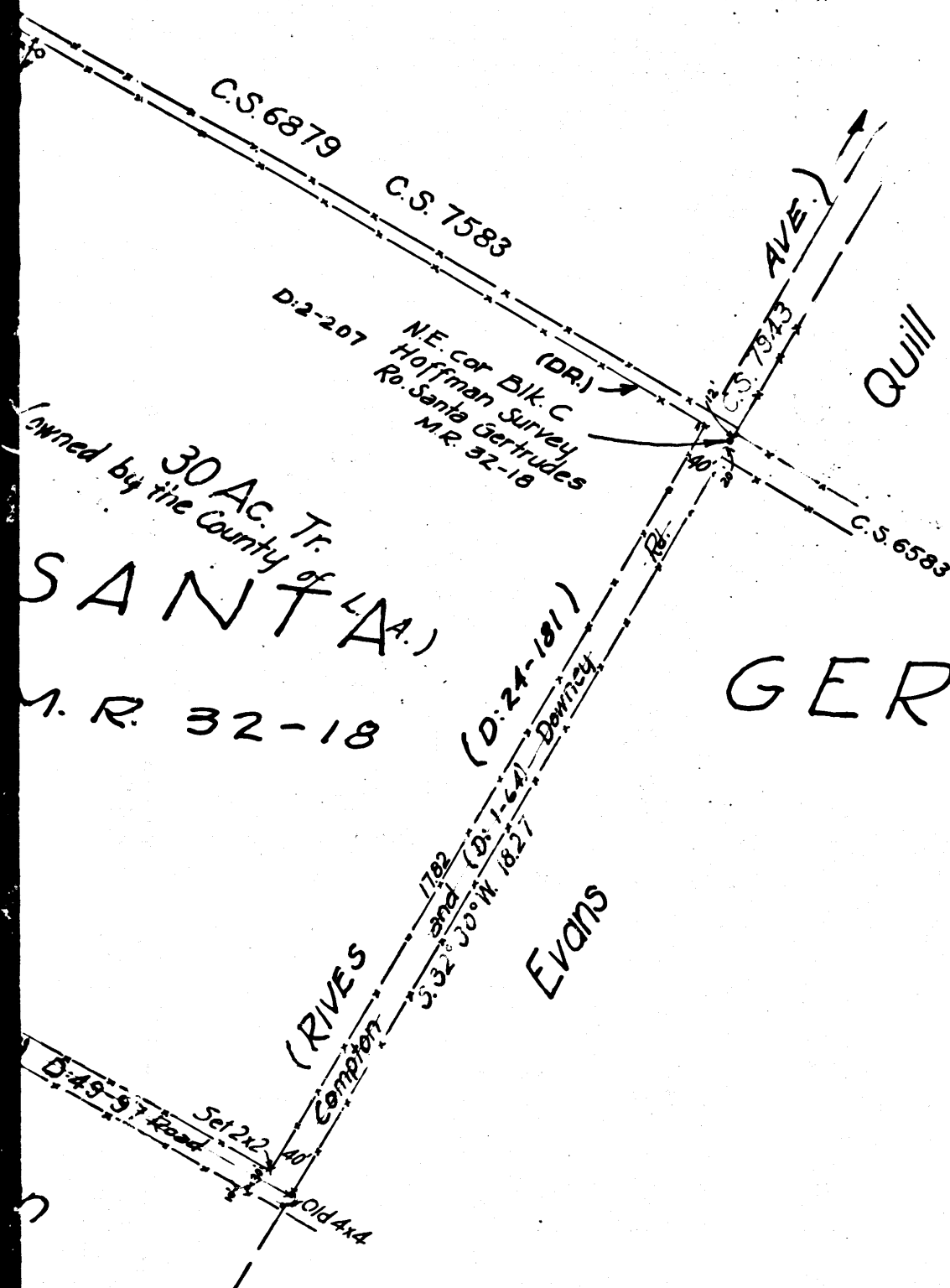


See C.S. 7708 sht. 4



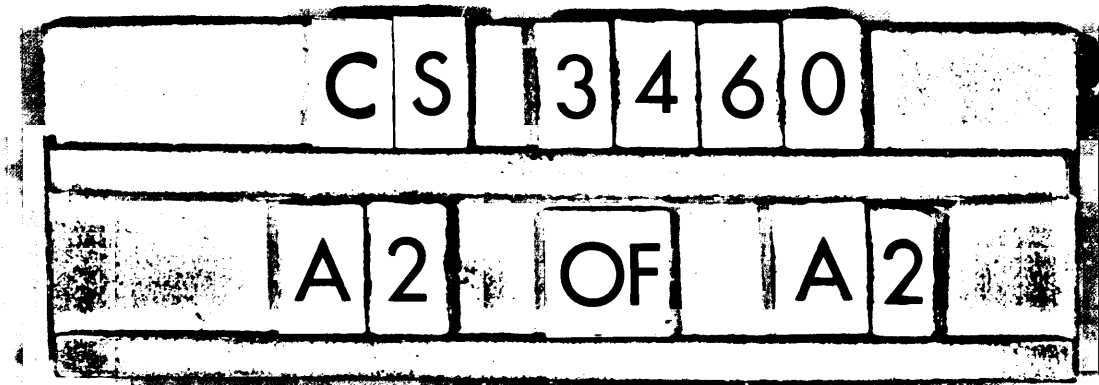
RANCHO LOS AMIGOS

Land to be deeded to County

as addition to Poor Farm
 in Block C, Santa Gertrudes Ro.
 as per Hoffman Survey
 as located in Dec. 1897 & 8 Feb 98
 County Surveyors Map No. 3460

E.T. Wright, Co. Sur.
 by J.O. Marsh, Deputy
 SCALE - 3chs = 1"

FB. 12-72
 " 16-15
 " 17-58
 C. 3-49 & 50
 Index 32
 T. 3 S. R. 12 W



County Farm named Rancho Los Amigos - D: 49-206