

PASSONS BLVD.

Plat of

~~RIVERA AND STEWART LANE ROAD~~

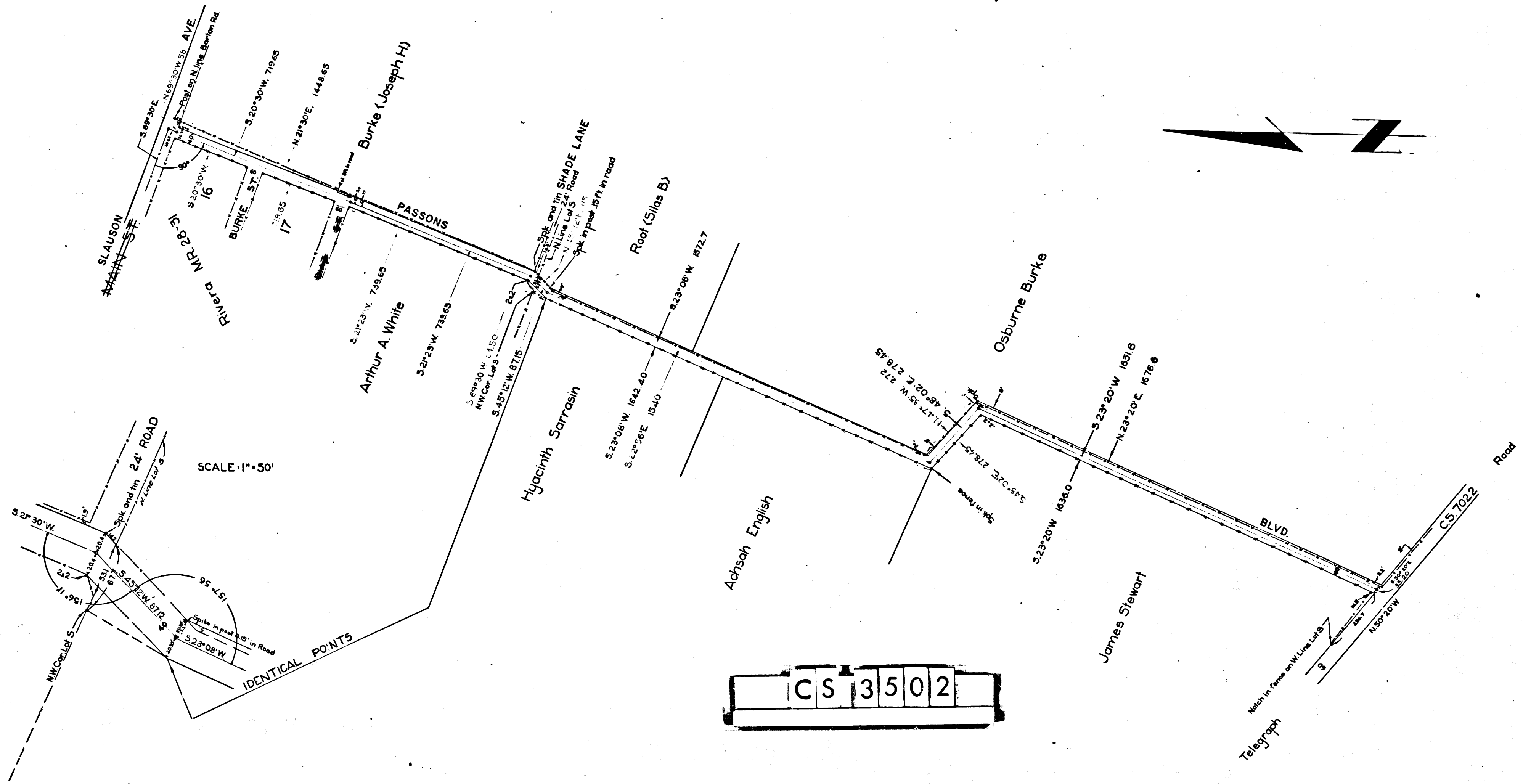
Surveyed June 3, 1898 by H. Hamlin Dep Co. Sur.  
 Scale 200'-1" F.B. 16-69-70  
 County Surveyors Map No. 3502

I.M. 36

Rivera and Stewart Lane Rd changed to Passons Blvd. D:49-23 RB:35-306  
 See D.M. 1245-9 D:2-228 C.S. 6736

Retraced from the white bond paper original map which has been discarded.

Traced by T. Kardos - May, 1957  
 Checked by R.J.B.



CS 3502