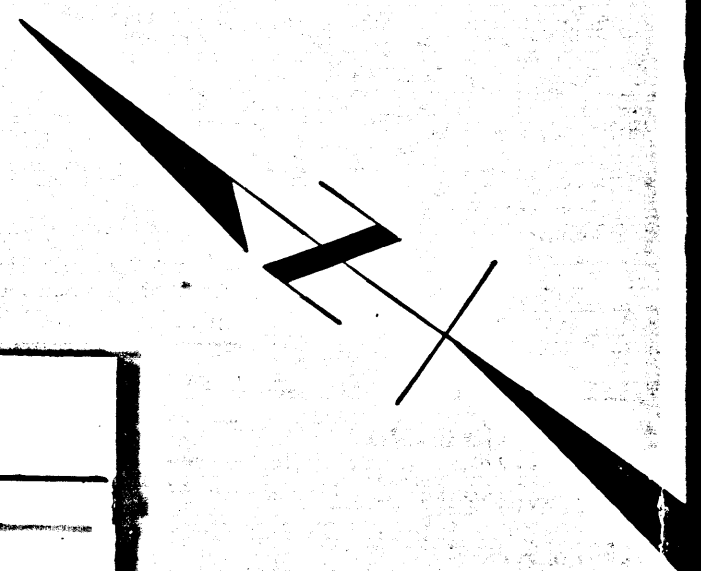
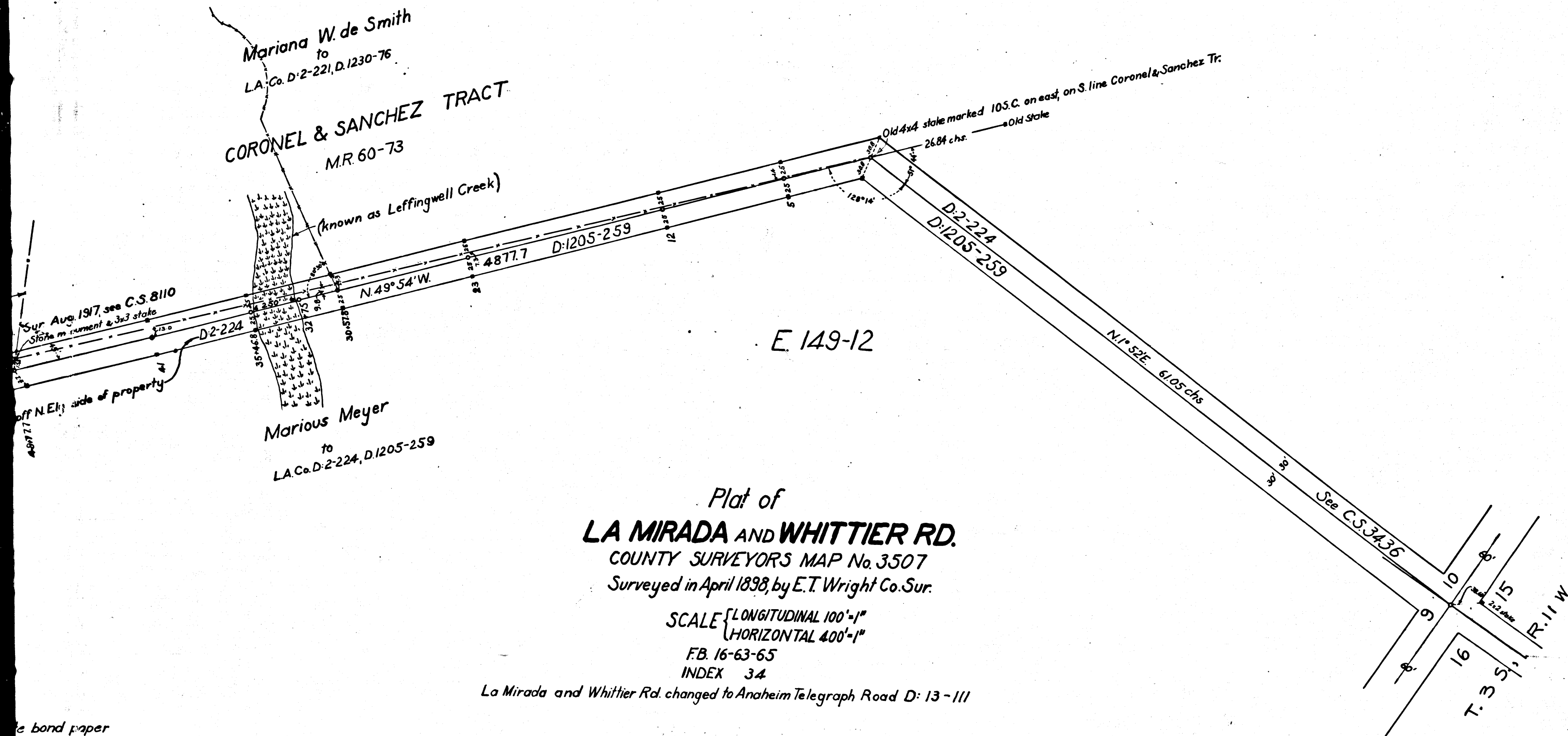


Retraced from the white bond paper
 original map which has been discarded.
 Traced by T. Kardos - March, 1957
 Checked by R.J.B.

Plat of
LA MIRADA AND WHITTIER
 COUNTY SURVEYORS MAP No. 33
 Surveyed in April 1898, by E.T. Wright Co.
 SCALE [LONGITUDINAL 100'-1"
 [HORIZONTAL 400'-1"
 FB. 16-63-65
 INDFX 34
 La Mirada and Whittier Rd. changed to Anaheim Telegraph Road

CS	3507
A1	OF A2



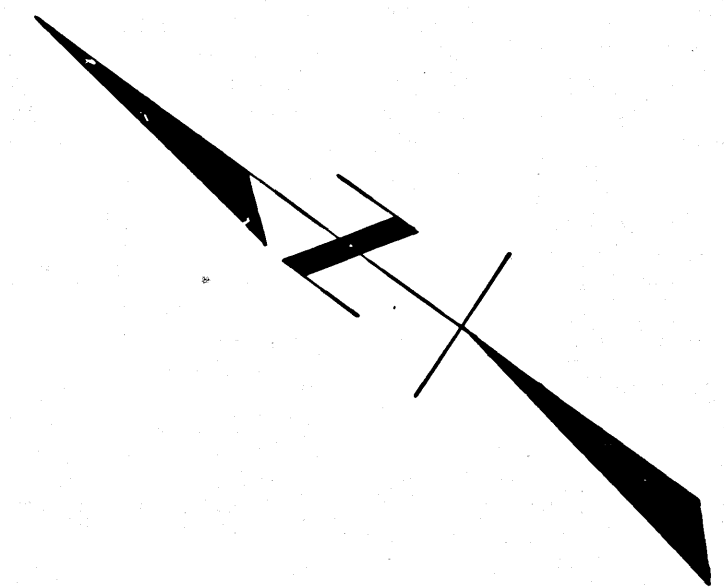


Plat of
LA MIRADA AND WHITTIER RD.
 COUNTY SURVEYORS MAP No. 3507
 Surveyed in April 1898, by E.T. Wright Co. Sur.

SCALE { LONGITUDINAL 100'-1"
 HORIZONTAL 400'-1"
 F.B. 16-63-65
 INDEX 34

La Mirada and Whittier Rd. changed to Anaheim Telegraph Road D: 13-111

The bond paper
 has been discarded.
 March, 1957



CS	3507
A2	OF A2