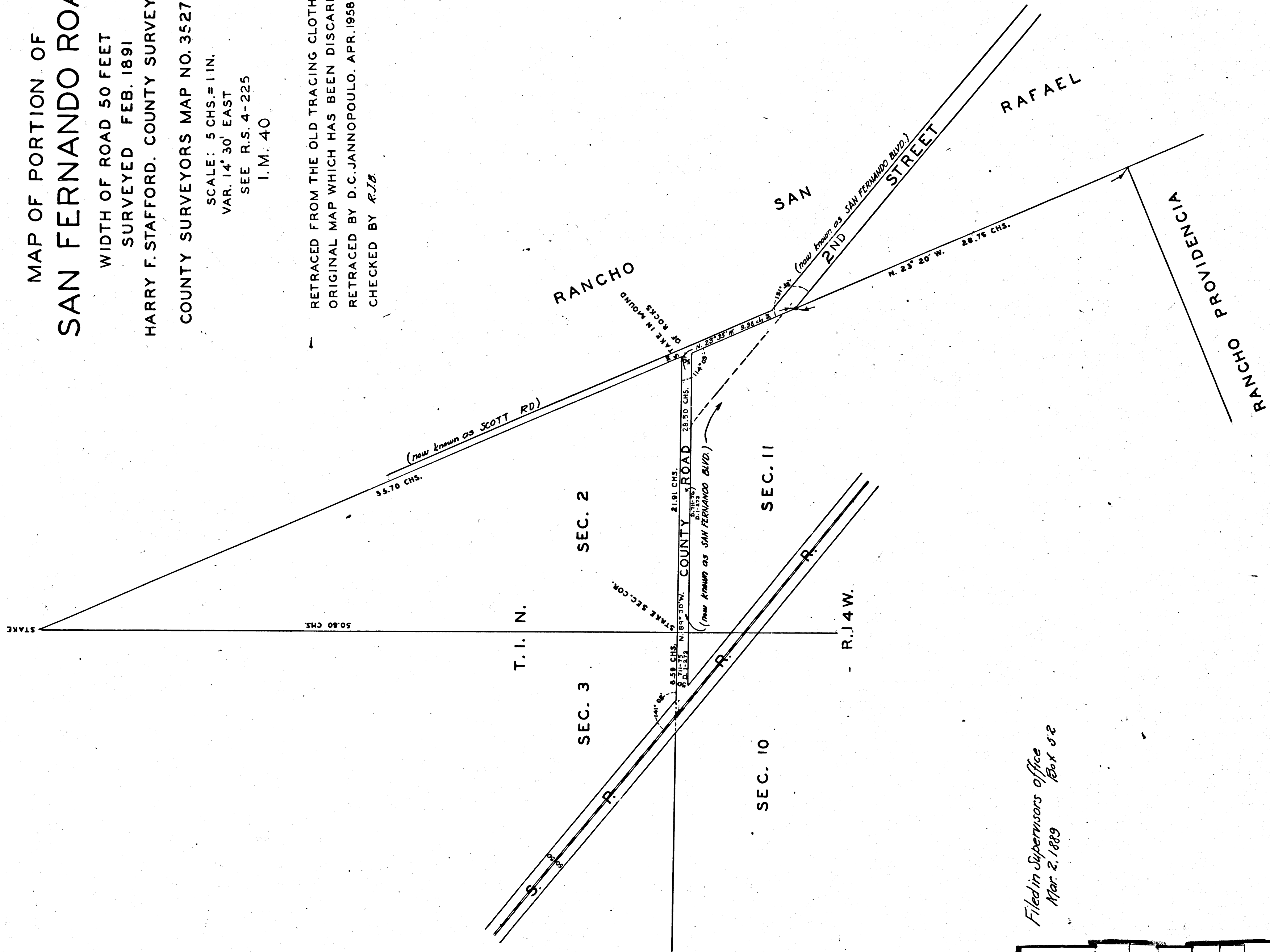


MAP OF PORTION OF  
**SAN FERNANDO ROAD**

WIDTH OF ROAD 50 FEET  
 SURVEYED FEB. 1891  
 HARRY F. STAFFORD, COUNTY SURVEYOR  
 COUNTY SURVEYORS MAP NO. 3527

SCALE: 5 CHS. = 1 IN.  
 VAR. 14° 30' EAST  
 SEE R.S. 4-225  
 I.M. 40

RETRACED FROM THE OLD TRACING CLOTH  
 ORIGINAL MAP WHICH HAS BEEN DISCARDED.  
 RETRACED BY D.C. JANNOPULO. APR. 1958  
 CHECKED BY R.J.B.



*Filed in Supervisors office  
 Mar. 2, 1899 Box 52*

	C	S	3	5	2	7	
--	---	---	---	---	---	---	--