

# VALMONT STREET

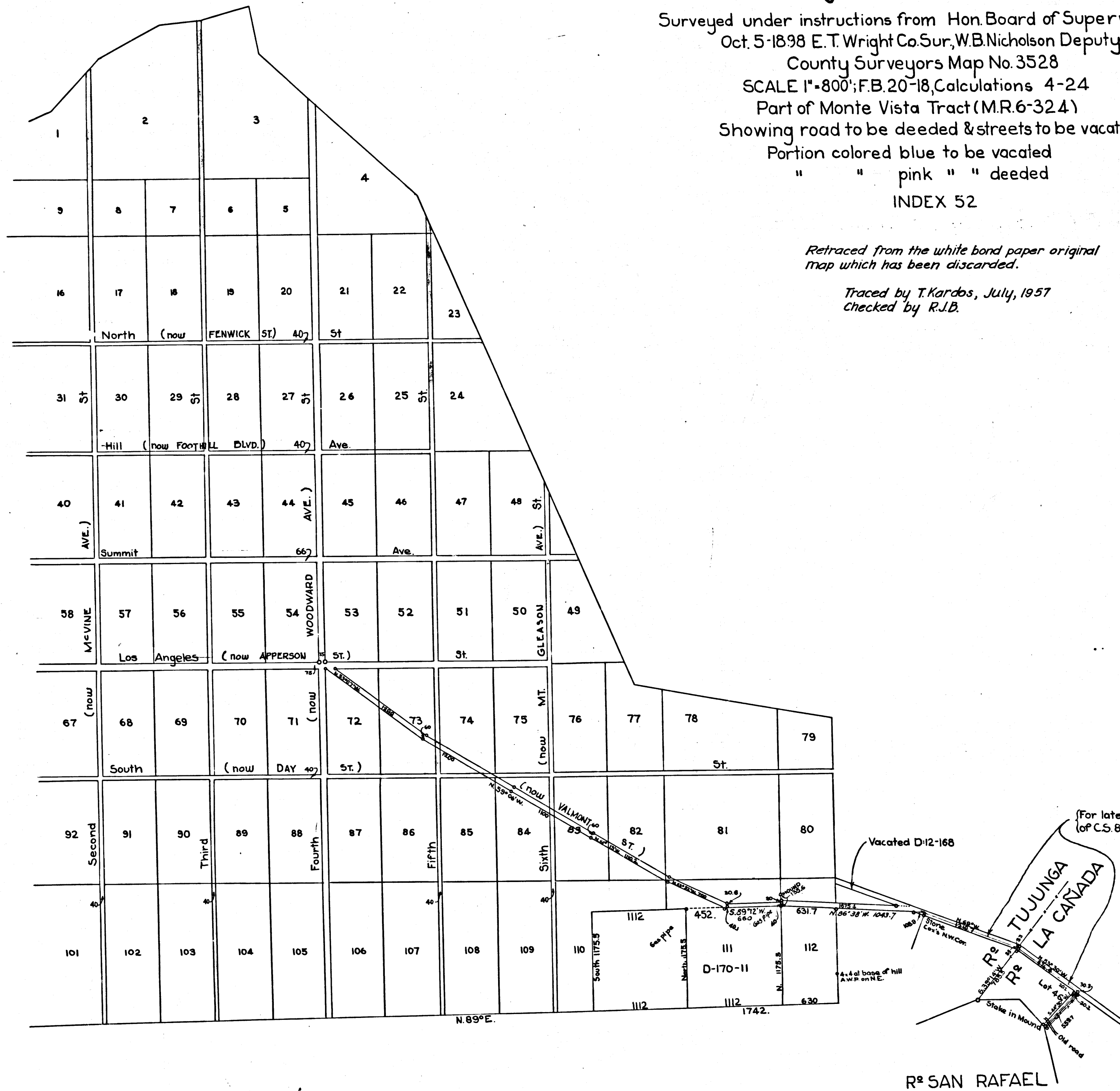
## ~~Michigan Avenue Extension~~

Surveyed under instructions from Hon. Board of Supervisors  
 Oct. 5-1898 E.T. Wright Co. Sur., W.B. Nicholson Deputy  
 County Surveyors Map No. 3528  
 SCALE 1"=800'; F.B. 20-18, Calculations 4-24

Part of Monte Vista Tract (M.R. 6-324)  
 Showing road to be deeded & streets to be vacated  
 Portion colored blue to be vacated  
 " " pink " " deeded  
 INDEX 52

*Retraced from the white bond paper original  
 map which has been discarded.*

*Traced by T. Kardos, July, 1957  
 Checked by R.J.B.*



(For later survey See Marginal Map at end  
 of C.S. 8949-2)

C S 3528