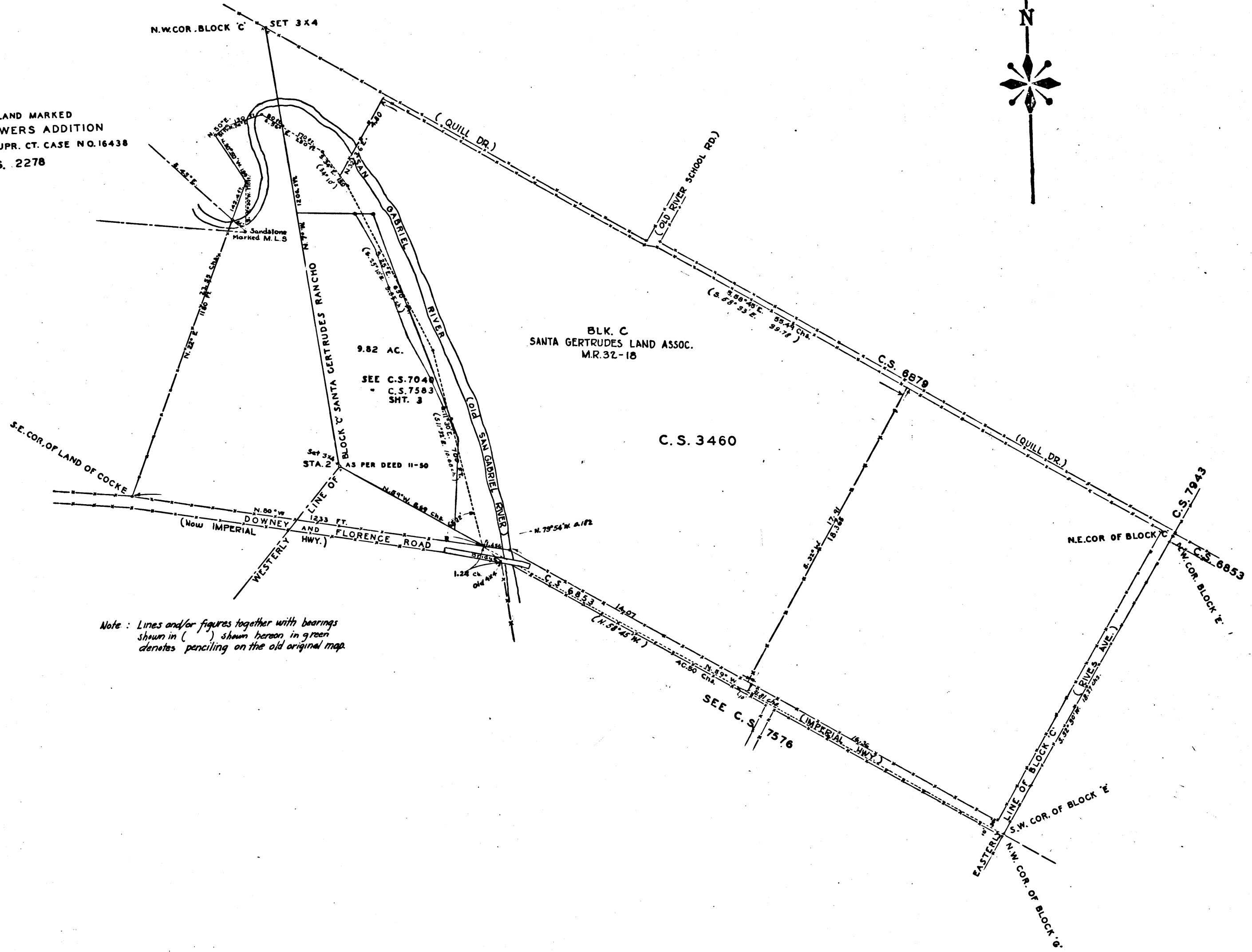


TRACT OF LAND MARKED  
PATTERSON BOWERS ADDITION  
ON PLTFFS. EX. E IN SUPR. CT. CASE NO. 16438  
SEE C.S. 2278



Note: Lines and/or figures together with bearings shown in ( ) shown hereon in green denotes penciling on the old original map.



PART OF BLOCK C, SANTA GERTRUDES RANCHO  
OWNED BY LOS ANGELES COUNTY  
CLAIMED BY FRANK C. PATTERSON  
E. T. WRIGHT, CO. SURVEYOR  
NOV. 1898  
COUNTY SURVEYORS MAP NO. 3531  
SCALE: 3 CHS. = 1 IN.  
F. B. 12-72; 17-58  
I. M. 32  
SEE CO. SURV. MAP NO. 7708 7583 SHT. 3  
COUNTY FARM NAMED RANCHO LOS AMIGOS-D. 49-206

RETRACED FROM THE OLD TRACING CLOTH  
ORIGINAL MAP WHICH HAS BEEN DISCARDED.  
RETRACED BY D. C. JANNPOULO, APR. 1958  
CHECKED BY R. J. B.

CS 3531