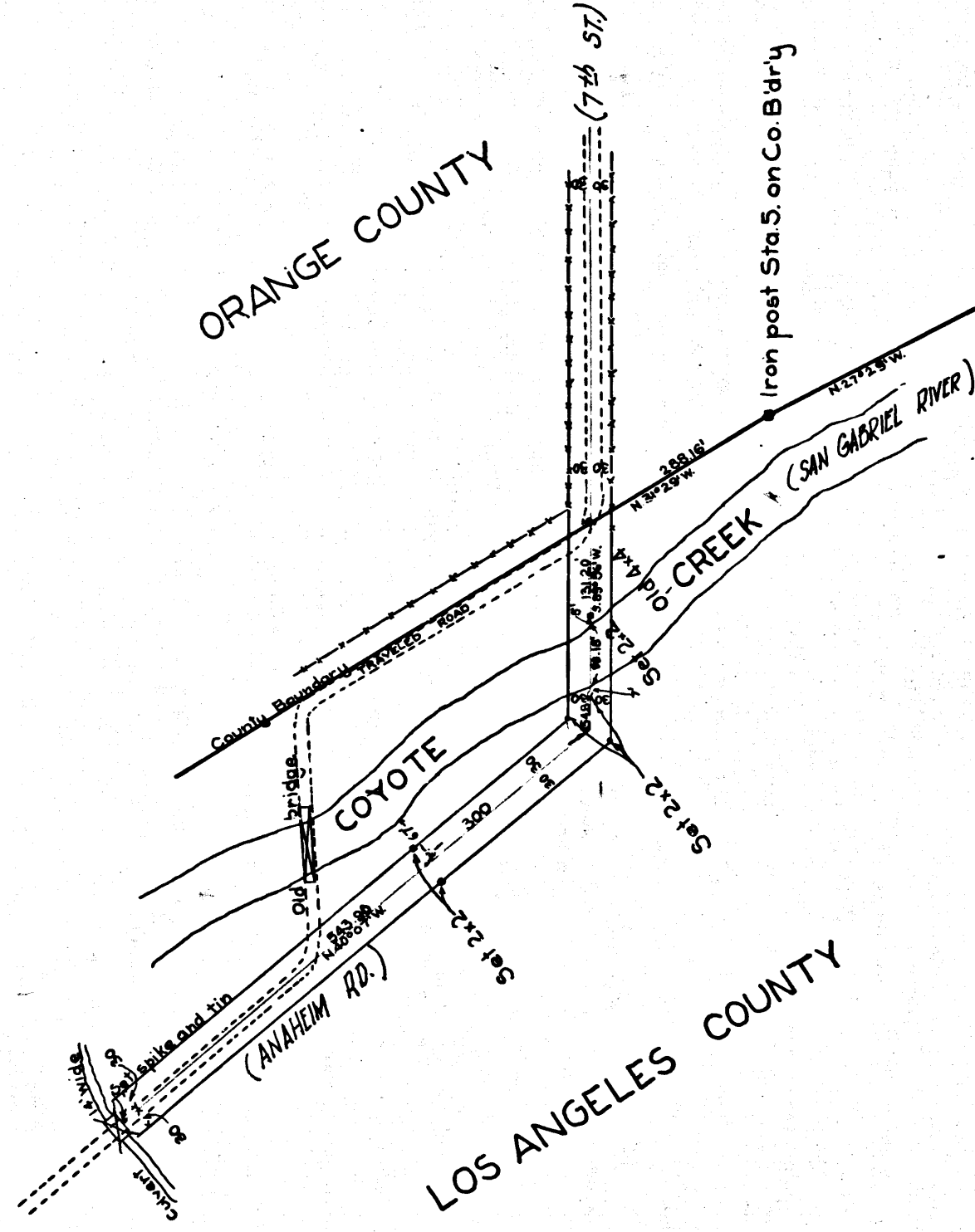


MAP SHOWING THE PROPOSED CHANGE  
**LONG BEACH AND WESTMINSTER ROAD**  
 Surveyed by order of Hon. Board of Supervisors  
 March 31, 1900, by Jos. H. Smith, Co. Sur. F.B. 20-57  
 SCALE 1"=200' T. 5 S. R. 12 W.  
 County Surveyors Map No. 3541  
 Var. 14° 30' E.

INDEX 31  
 D.M. 1369-135, D: 2-278



*Refraced from the assessor book paper  
 original map which has been discarded.  
 Traced by T. Harbo, July, 1957  
 Checked by R.U.B.*

CS	3541
----	------