

Sec. 14

Sec. 13

Youngblood

40 Acs. Jos. Youngblood

Jos Youngblood

Jos Youngblood

Soledad Road

from end of Stafford's survey in
Sec 23 T.4N. R.15W. to Lang's Sta.

Surveyed by Order of Board of Supervisors

— BY —
Jos H. Smith Co. Sur.

April 25, 26, 27, 1900

SCALE 5 CHS = 1 IN.

F.B. 21 R. 46

COUNTY SURVEYORS MAP NO. 3543

SHEET 1 OF 2 SHEETS

Declared a public highway July 16, 1900 R.B. 6-P123

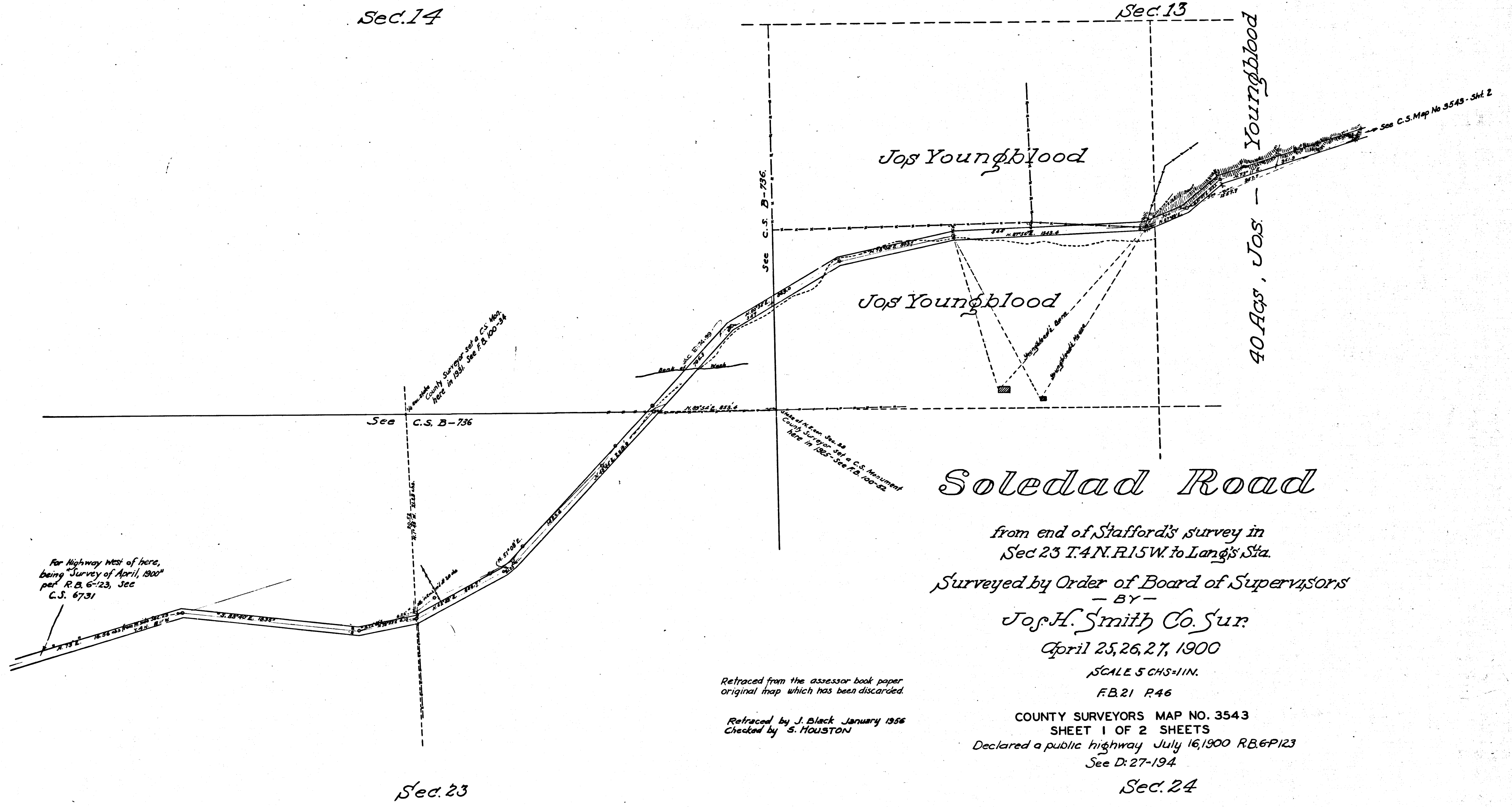
See D: 27-194

Sec. 24

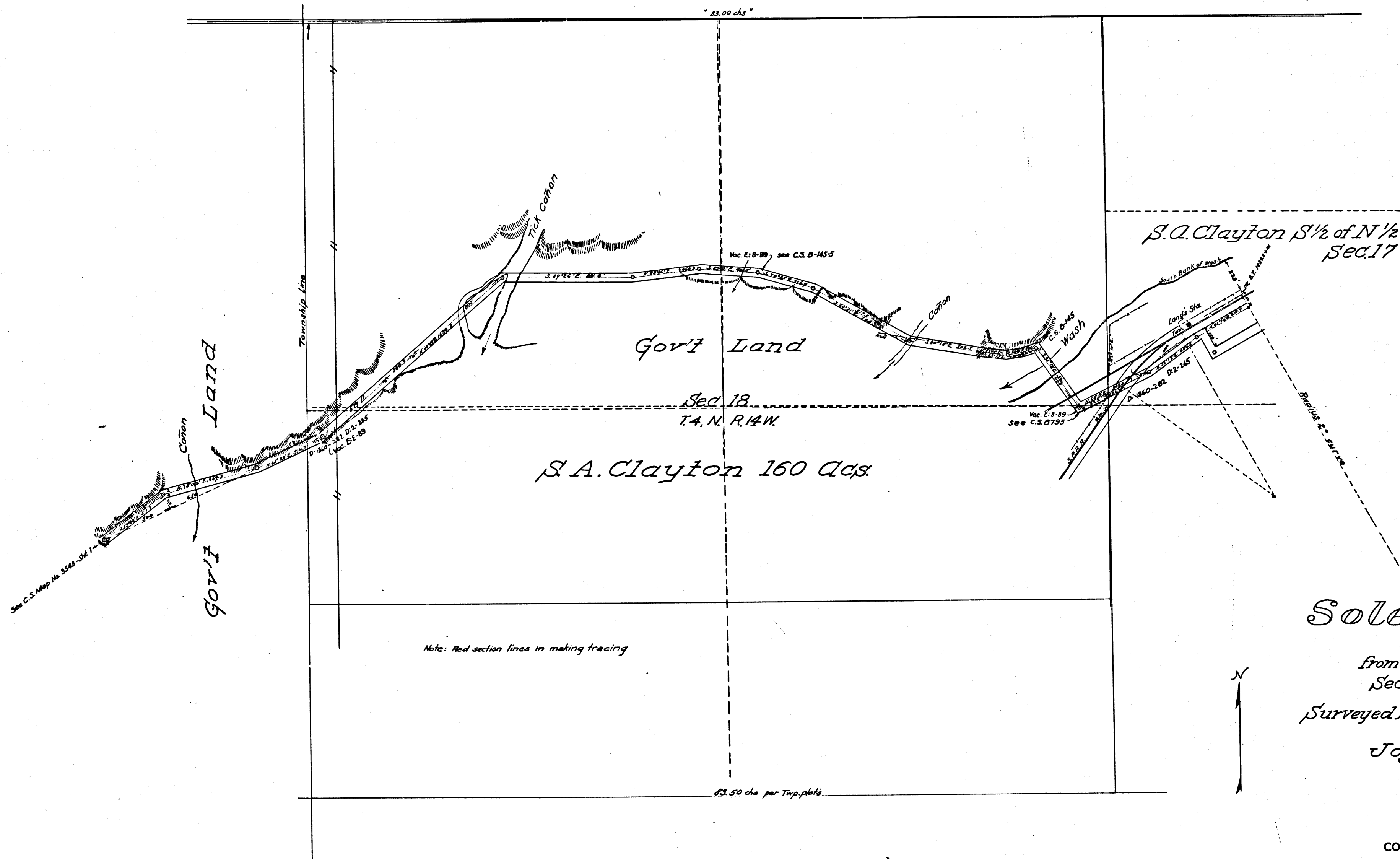
Retraced from the assessor book paper
original map which has been discarded.

Retraced by J. Black January 1956
Checked by S. HOUSTON

Sec. 23



CS 3543 SHT. 1



Retraced from the assessor book paper original map which has been discarded.
Retraced by J. Black January 1956
Checked by S. Houston

Soledad Road

from end of Stafford's survey in
Sec. 23 T.4N.R.15W. to Lang's Sta.
Surveyed by Order of Board of Supervisors
- BY -
J. H. Smith Co. Sur.
April 25, 26, 27, 1900
SCALE 5 CHS=1 IN.
F.B. 21 P. 46
COUNTY SURVEYORS MAP NO. 3543
SHEET 2 OF 2 SHEETS
Declared a public highway July 16, 1900 R.B. & P. 123
See D: 27-194
I.M. 264-157

CS 3543 SHT. 2