

MAP OF
CALIFORNIA AVE.
 SURVEYED BY ORDER OF THE HONORABLE
 BOARD OF SUPERVISORS JULY 31ST 1900
 JOS. H. SMITH CO. SURV.
 COUNTY SURVEYORS MAP NO. 3546

SCALE: 300' = 1 IN. VAR. 14 EAST
 F. B. 22-4
~~C.S. 6248~~ MISSING
~~C.S. 8171~~ F.M. 18171
 I.M. 46

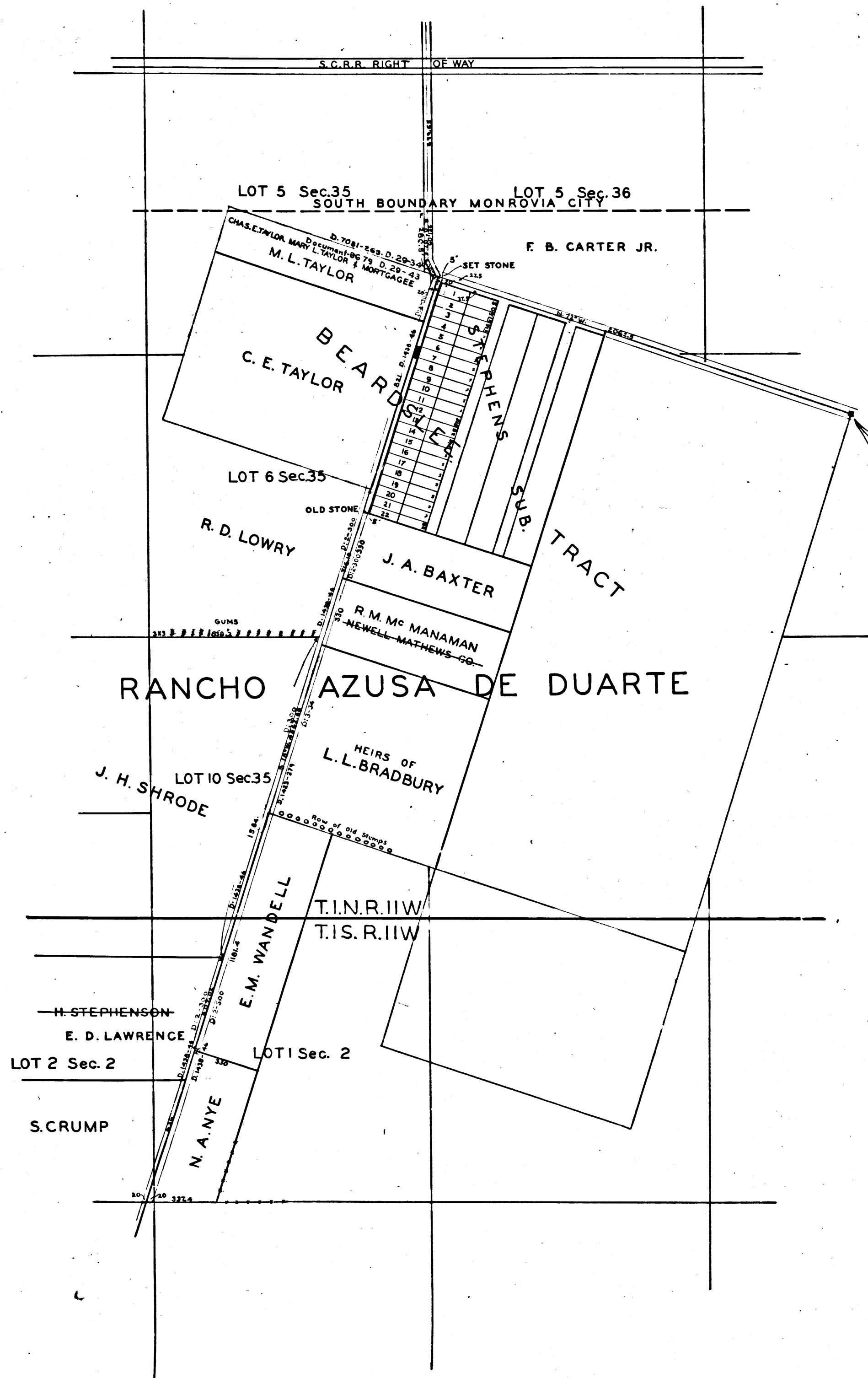
NOTE:
 PORTION COLORED BLUE DEEDED
 PORTION COLORED RED TO BE DEEDED

RETRACED FROM THE OLD TRACING CLOTH ORIGINAL MAP
 WHICH HAS BEEN DISCARDED.
 RETRACED BY D. C. JANNOPULO. MARCH 24, 1958.

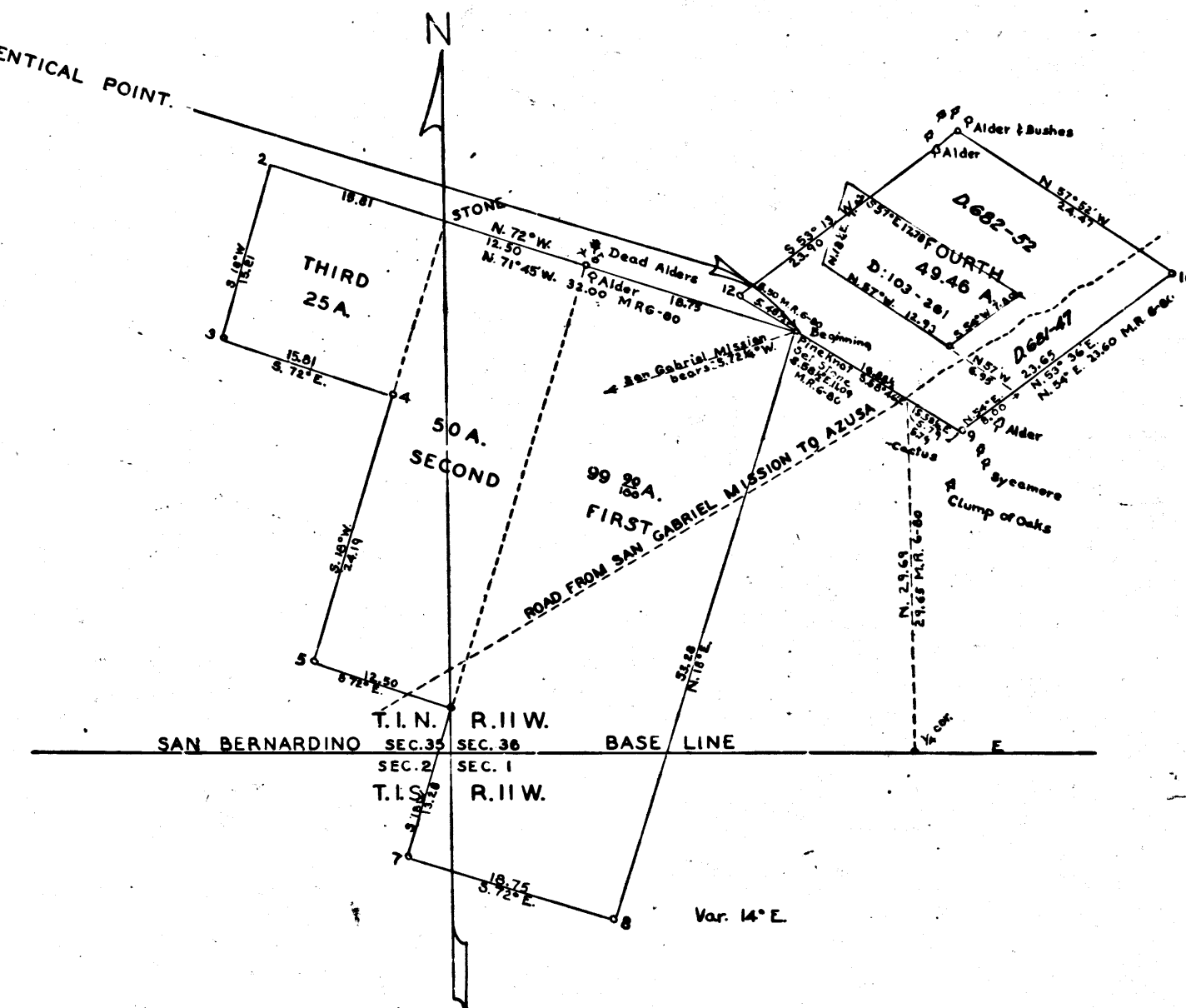
Checked by R.J.D.

OLD "PINE KNOT" = STA. 1 BEARDSLEE'S LAND
 SET LARGE STONE WITH CROSS ON TOP
 SEE D: 5-356

PLAN OF A TRACT OF LAND
 SOLD TO N. BEARDSLEE
 BY MICHAEL WHISTLER
 JAN. 15, 1861



See M.R. 6-20
 & D. 754-116



CS 3546