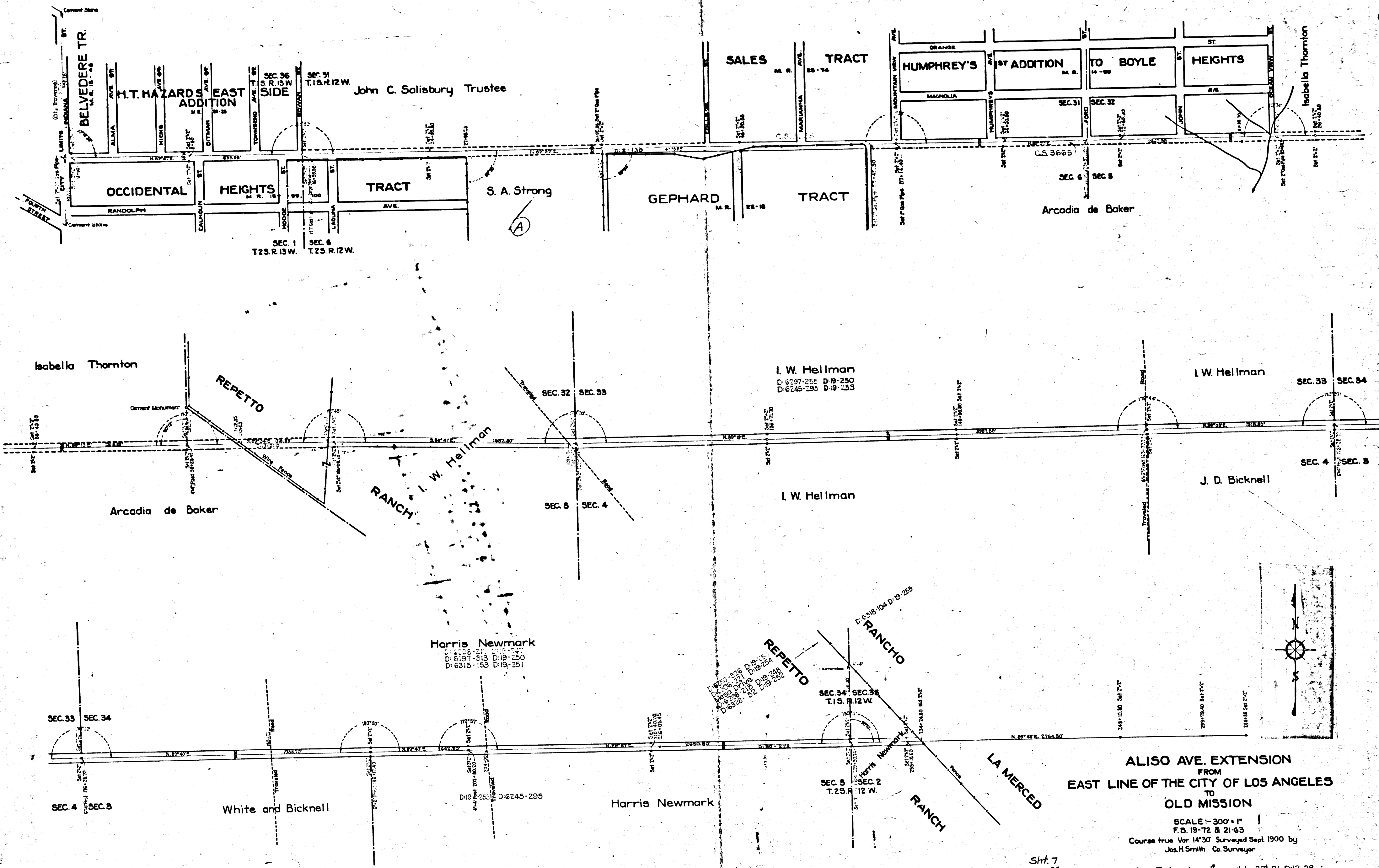


Page 3 SHEET 1 OF 5 SHEETS



ALISO AVE. EXTENSION
 FROM
 EAST LINE OF THE CITY OF LOS ANGELES
 TO
 OLD MISSION

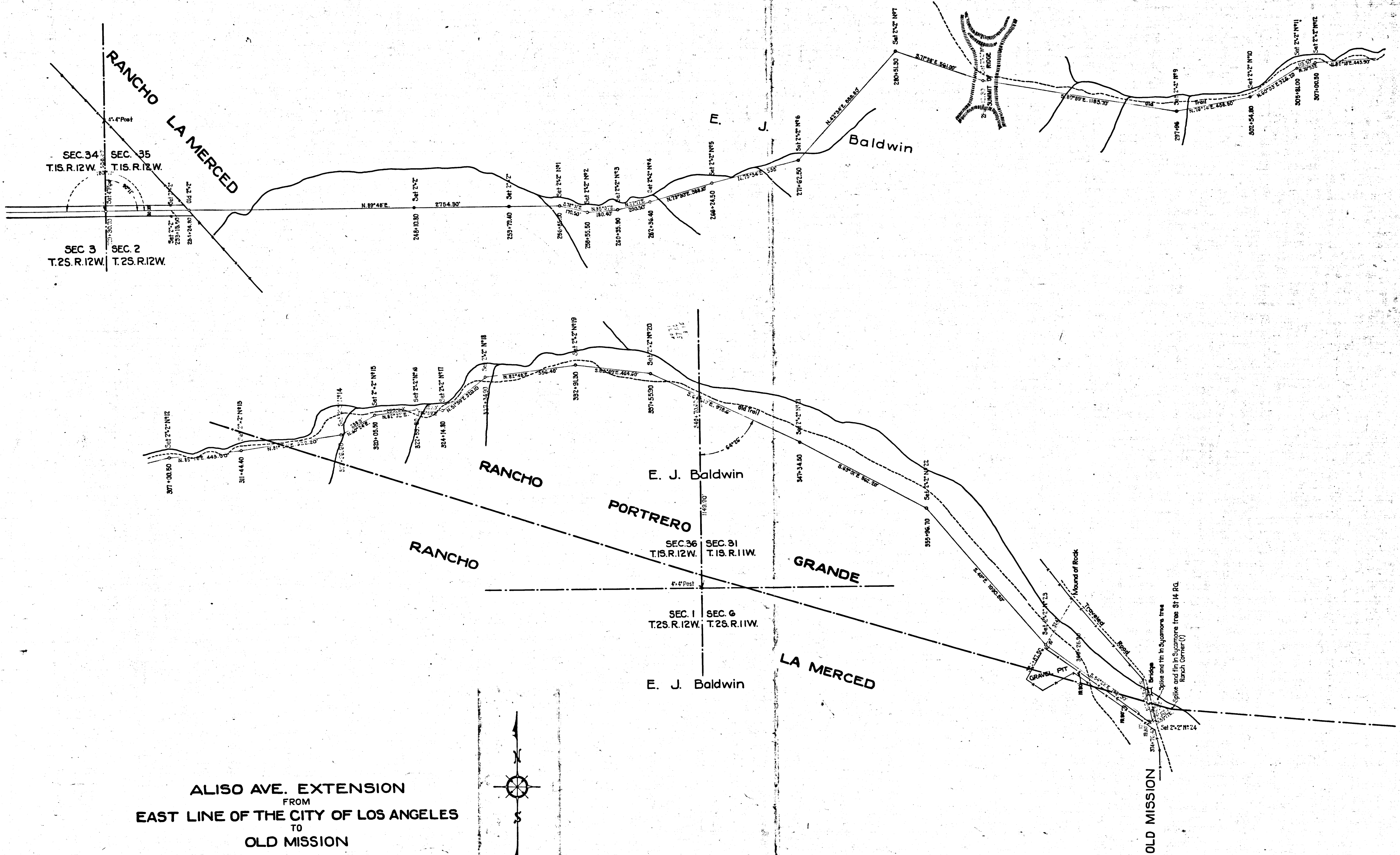
SCALE - 300' = 1"
 F.B. 19-72 & 21-63
 Course true Var 14°30' Surveyed Sept. 1900 by
 Jos. H. Smith Co. Surveyor

Aliso Ave. Extension changed to 3rd St D:13-28.
 Traced from original by R. F. Steen, May 1931.
 Checked by Coleman Sutton.

Sht. 7
 - 36

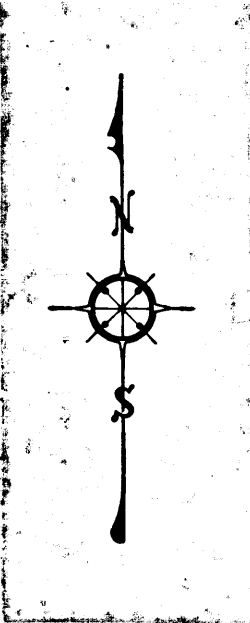
CS 3547 SHT. 1

SHEET 1 OF 5 SHEETS
 MAP NO. 3547



ALISO AVE. EXTENSION
 FROM
 EAST LINE OF THE CITY OF LOS ANGELES
 TO
 OLD MISSION

SCALE — 800' = 1"
 F.B. 19-72 & 21-63
 Course true Var. 14°30' Surveyed Sept. 1900 by
 Jos. H. Smith, Co. Surveyor.



Traced from original by Reta F. Steen
 Checked by Coleman Sutton. May 1931.

CS 3547 SHT. 2