

Section Line

INDEX 48
 Stephens (Sycamore) Cañon Road
 from North Line of R² San Jose to Sec. 23, T1N, R.9W
 Surveyed October 1900 by Order of the Board of Supervisors by
 Jos. H. Smith Co. Surveyor Oct. 20, 1900.
 Course true Variation 14'30"
 F. B. 18-P 67 to 75
 Scale 200' to 1 in.

H. A. Palmer }
 E. W. Shuler } Viewers
 Jos. H. Smith }

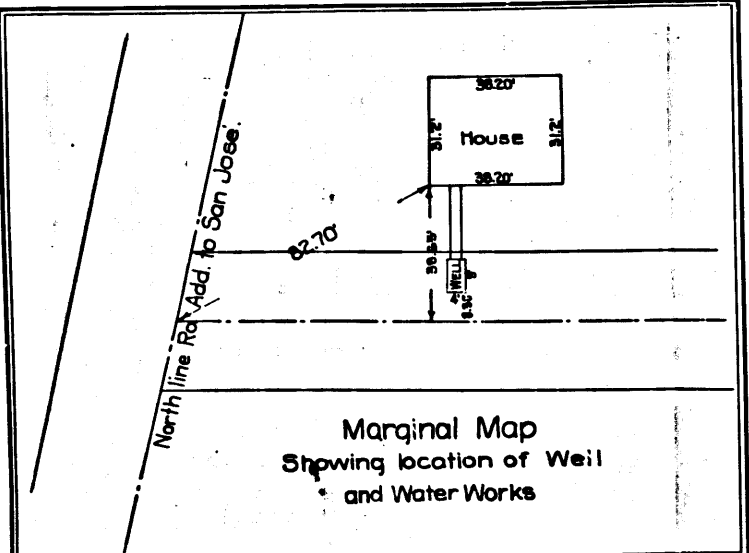
Road declared public highway See D:10-218

R.B. 11-53

D:32-295-R.B. 6-455

COUNTY SURVEYORS MAP NO. 3549
 SHEET NO. 1 OF 2 SHEETS

No.	COURSE	DIST.
1	North	198000
2	N.70°48'W	13056
3	N.52°40'W	32030
4	N.26°22'W	43390
5	N.30°04'W	36460
6	N.24°23'W	14370
7	N.31°44'W	18060
8	N.6°52'W	14130
9	N.52°30'W	20000
10	N.19°10'W	7450
11	N.1°40'E	18150
12	N.19°30'W	27370
13	N.35°18'W	12560
14	N.9°27'W	22800
15	N.14°41'W	7840
16	N.30°34'W	26680
17	N.18°00'W	21090
18	N.1°15'E	18440
19	N.27°15'W	27620
20	N.37°00'W	20830
21	N.36°30'W	14680
22	N.34°43'W	28410



Rancho Add. to San Jose
 MR 22-21

T. PAYNE
 GLENDORA WATER CO.

CITRUS BELT WATER CO.

GLENDORA WATER CO.

J. S. SPIERS & SAN JOSE' LAND AND WATER CO.

J. A. STEPHENS

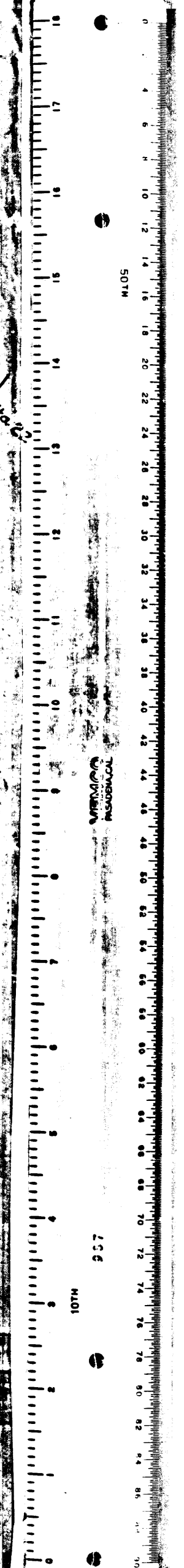
H. H. THOMPSON

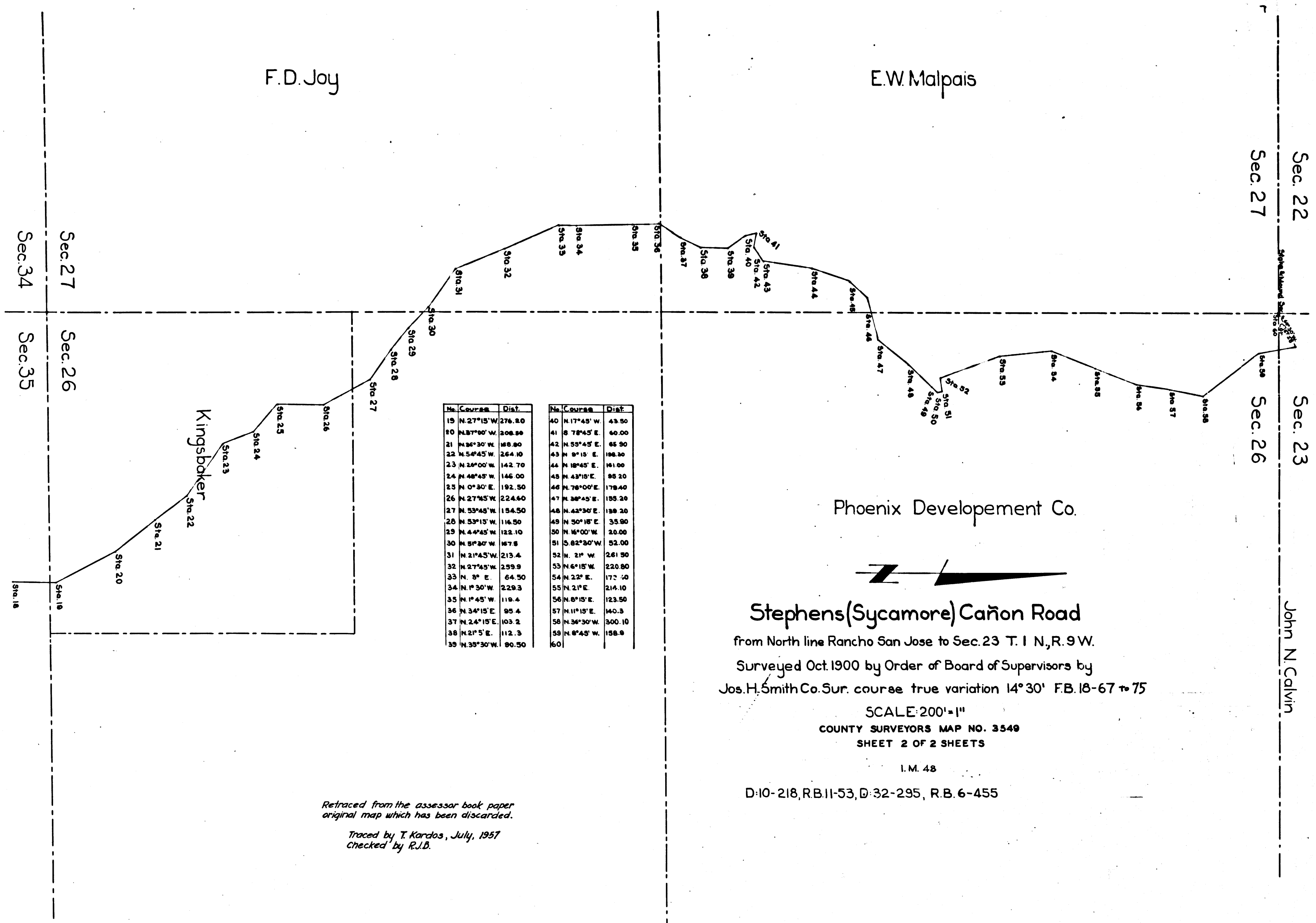
For this por. see C.S.B. 60-1 & C.S. 8811

Retraced from the assessor book paper
 original map which has been discarded.

Tracer & date unknown
 checked by R.I.B.

CS 3549 SHT. 1





F.D. Joy

E.W. Malpais

Sec. 22
Sec. 27
Sec. 23
Sec. 26

Sec. 27
Sec. 34
Sec. 26
Sec. 35

Kingsbaker

Phoenix Development Co.

John N. Calvin



Stephens (Sycamore) Cañon Road

from North line Rancho San Jose to Sec. 23 T. 1 N., R. 9 W.
 Surveyed Oct. 1900 by Order of Board of Supervisors by
 Jos. H. Smith Co. Sur. course true variation 14° 30' F.B. 18-67 to 75

SCALE: 200' = 1"
 COUNTY SURVEYORS MAP NO. 3549
 SHEET 2 OF 2 SHEETS

I.M. 48

D:10-218, R.B. 11-53, D:32-295, R.B. 6-455

No.	Course	Dist.	No.	Course	Dist.
19	N. 27° 15' W.	276.80	40	N. 17° 45' W.	43.50
20	N. 87° 00' W.	306.80	41	S. 78° 45' E.	60.00
21	N. 86° 30' W.	168.80	42	N. 55° 45' E.	65.90
22	N. 56° 45' W.	264.10	43	N. 9° 15' E.	106.30
23	N. 25° 00' W.	142.70	44	N. 18° 45' E.	161.00
24	N. 48° 45' W.	146.00	45	N. 43° 15' E.	88.20
25	N. 0° 30' E.	192.50	46	N. 70° 00' E.	179.40
26	N. 27° 45' W.	224.60	47	N. 38° 45' E.	155.20
27	N. 53° 45' W.	154.50	48	N. 42° 30' E.	139.20
28	N. 53° 15' W.	116.50	49	N. 50° 18' E.	35.90
29	N. 44° 45' W.	122.10	50	N. 16° 00' W.	20.00
30	N. 56° 30' W.	167.8	51	S. 82° 30' W.	52.00
31	N. 21° 45' W.	213.4	52	N. 21° W.	261.50
32	N. 27° 45' W.	259.9	53	N. 64° 15' W.	220.80
33	N. 8° E.	64.50	54	N. 23° E.	172.40
34	N. 1° 30' W.	229.3	55	N. 21° E.	214.10
35	N. 1° 45' W.	119.4	56	N. 8° 15' E.	123.50
36	N. 34° 15' E.	95.4	57	N. 11° 15' E.	140.3
37	N. 24° 15' E.	103.2	58	N. 36° 30' W.	300.10
38	N. 21° 5' E.	112.3	59	N. 8° 45' W.	158.8
39	N. 35° 30' W.	80.50	60		

(Continued from
 C.S. 3549 - Sht. 1.)

Retraced from the assessor book paper
 original map which has been discarded.

Traced by T. Kardos, July, 1957
 Checked by R.J.B.

C S 3549 SHT. 2