

(WILBUR AVE.)  
Road to Reseda sta  
# 30.71  
Angle to Monument  
148° 14'

D:1533-213 D:3-56  
N.64° 07' W. 5314.6

Porton Road

14° 22'

Road

Arroyo de los Alisos

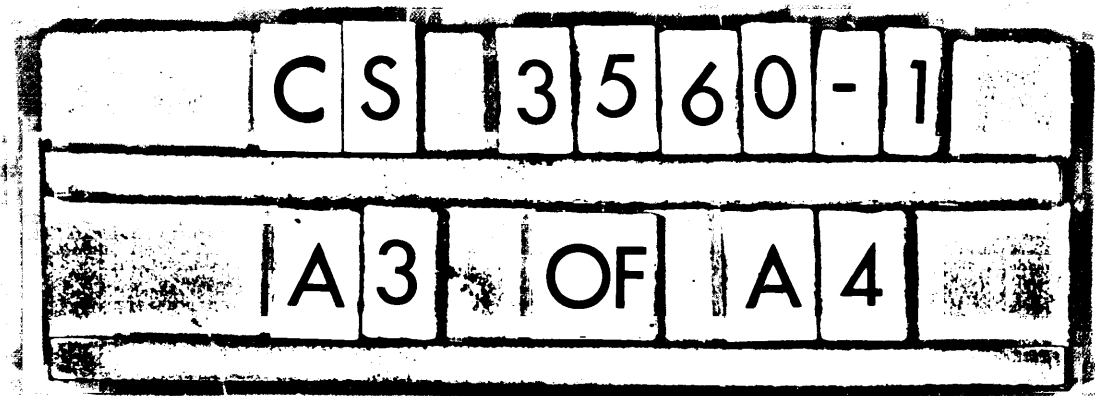
to stone Monument on Hill

	C	S	3	5	6	0	-	1	
	A	1		O	F		A	4	



# VENTURA BLVD. ~~Los Angeles & Ventura Road~~

continued  
 See C.S. 4126  
 Surveyed per order of Board of Supervisors dtd March 11, 1901  
 by Jos. H. Smith, Co. Sur., July 1901  
 F.B. 22-48-71  
 Courses true  
 SCALE 200'-1"  
 County Surveyors Map No. 3560  
 SHT. No 1 of 4 SHTS  
 Retraced by T. Kardos, June 1957  
 Checked by J. Black



Declared a public highway by Order of Bd of Supervisors Aug. 5, 1901, 60' wide D:27-215

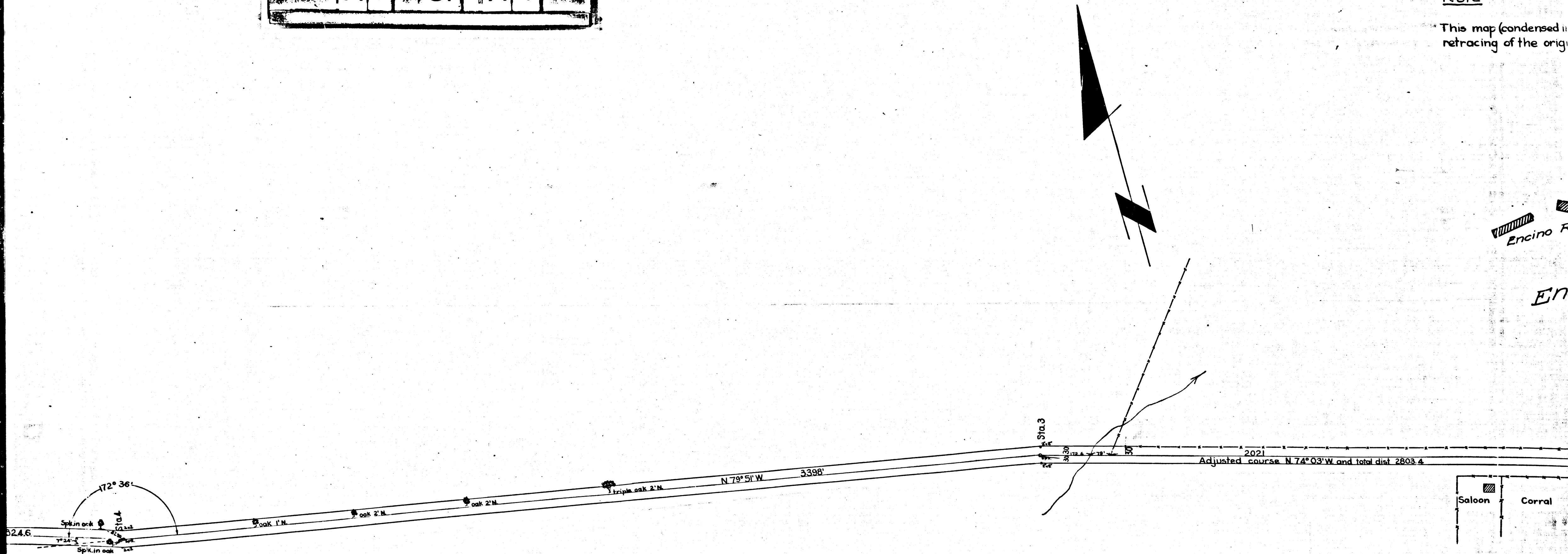
For vacation per this road See D:12-134 *FM-17873*  
 " " " " " " D:12-227, *C.S. 7873*

Los Angeles & Ventura Road changed to Ventura Blvd, Ord. 35056 & D:13-150

INDEX 57-55

Note

This map (condensed in retracing of the orig



EN

# VENTURA BLVD. ~~Los Angeles & Ventura Road~~

continued  
See C.S. 4126

Surveyed per order of Board of Supervisors dtd March 11, 1901  
by Jos. H. Smith, Co. Sur, July 1901

F.B. 22-48-71  
Courses true  
SCALE 200' = 1"

County Surveyors Map No. 3560  
SHT. No 1 of 4 SHTS

Retraced by T. Kardos, June 1957  
Checked by J. Black

CS	3	5	6	0	-	1
A	4	OF	A	4		

Declared a public highway by Order of Bd of Supervisors Aug. 5, 1901, 60' wide D: 27-215  
For vacation for this road See D: 12-134 FM-17873  
" " " " " " D: 12-227, C.S. 7873

Los Angeles & Ventura Road changed to Ventura Blvd, Ord. 35056 & D: 13-150  
INDEX 57-55

Note

This map (condensed into 4 sheets) is a retracing of the original 8 sheet paper map.

