

For continuation of this map  
see C.S. 3560, sheet 3

See FM-17873 for new alignment from Calabasas to  
Los Angeles County line and for portions vac. as per D:12-227  
See FM-10874 for "state Hwy" alignment  
See FM-12009 for Ventura Frwy.

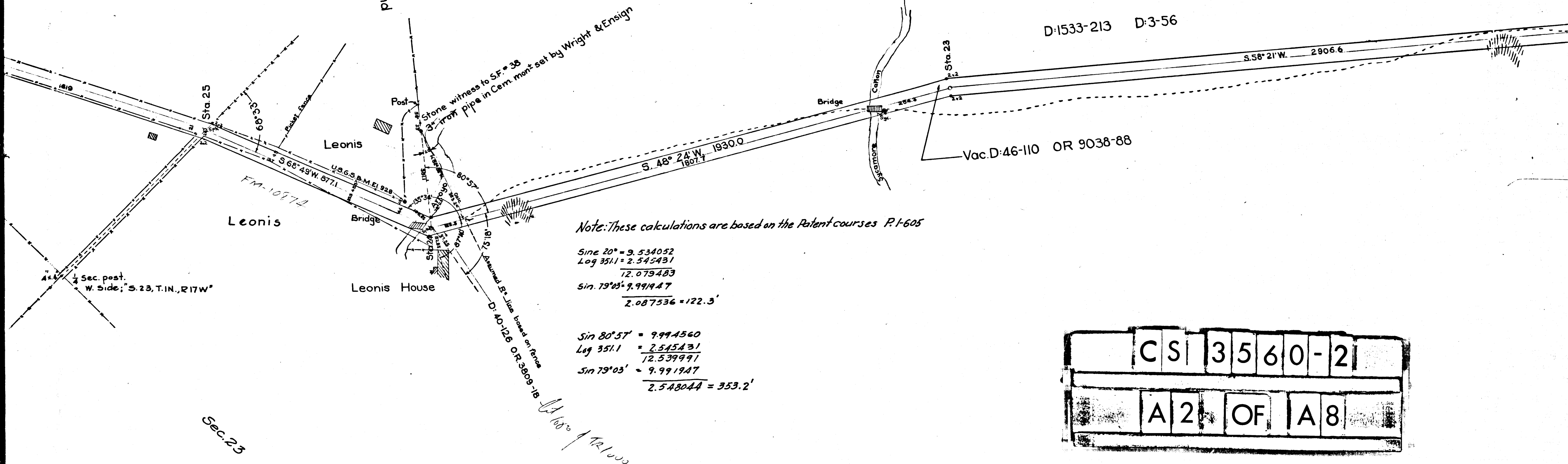
C	S	3	5	6	0	-	2
A	1	OF	A	8			

NE 1/4

Calabasas

R<sub>2</sub> San Fernando

Govt. Land



Note: These calculations are based on the Patent courses P-1-605

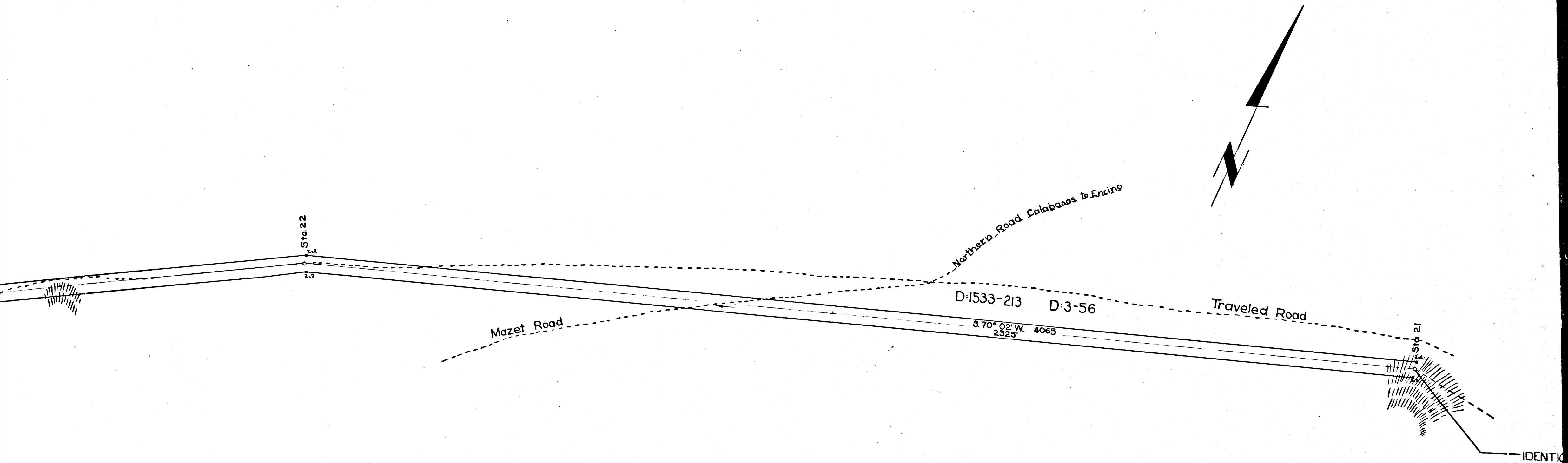
$$\begin{aligned} \text{Sine } 20^\circ &= 9.534052 \\ \text{Log } 351.1 &= 2.545431 \\ & \quad \underline{12.079483} \\ \text{Sin } 79^\circ 03' &= 9.991947 \\ & \quad \underline{2.087536} = 122.3' \end{aligned}$$

$$\begin{aligned} \text{Sin } 80^\circ 57' &= 9.994560 \\ \text{Log } 351.1 &= 2.545431 \\ & \quad \underline{12.539991} \\ \text{Sin } 79^\circ 03' &= 9.991947 \\ & \quad \underline{2.548044} = 353.2' \end{aligned}$$

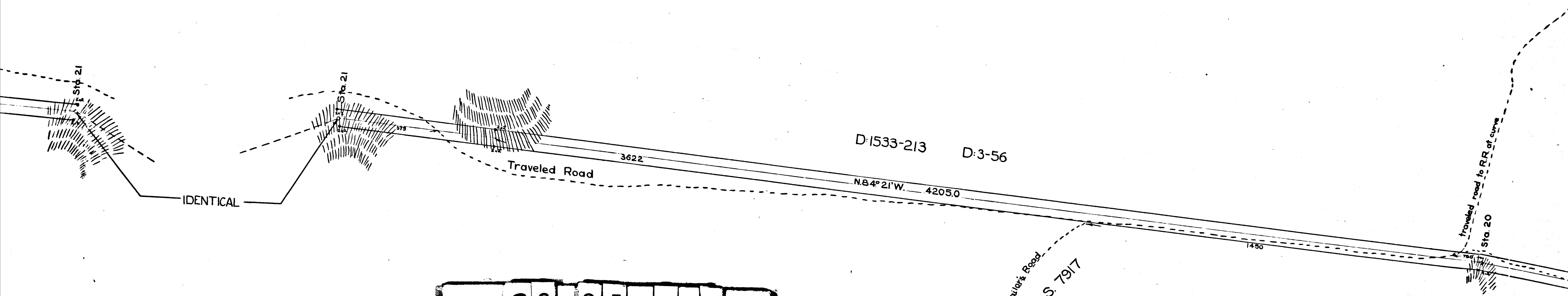
C	S	3	5	6	0	-	2
A	2	OF	A	8			

Sec. 23

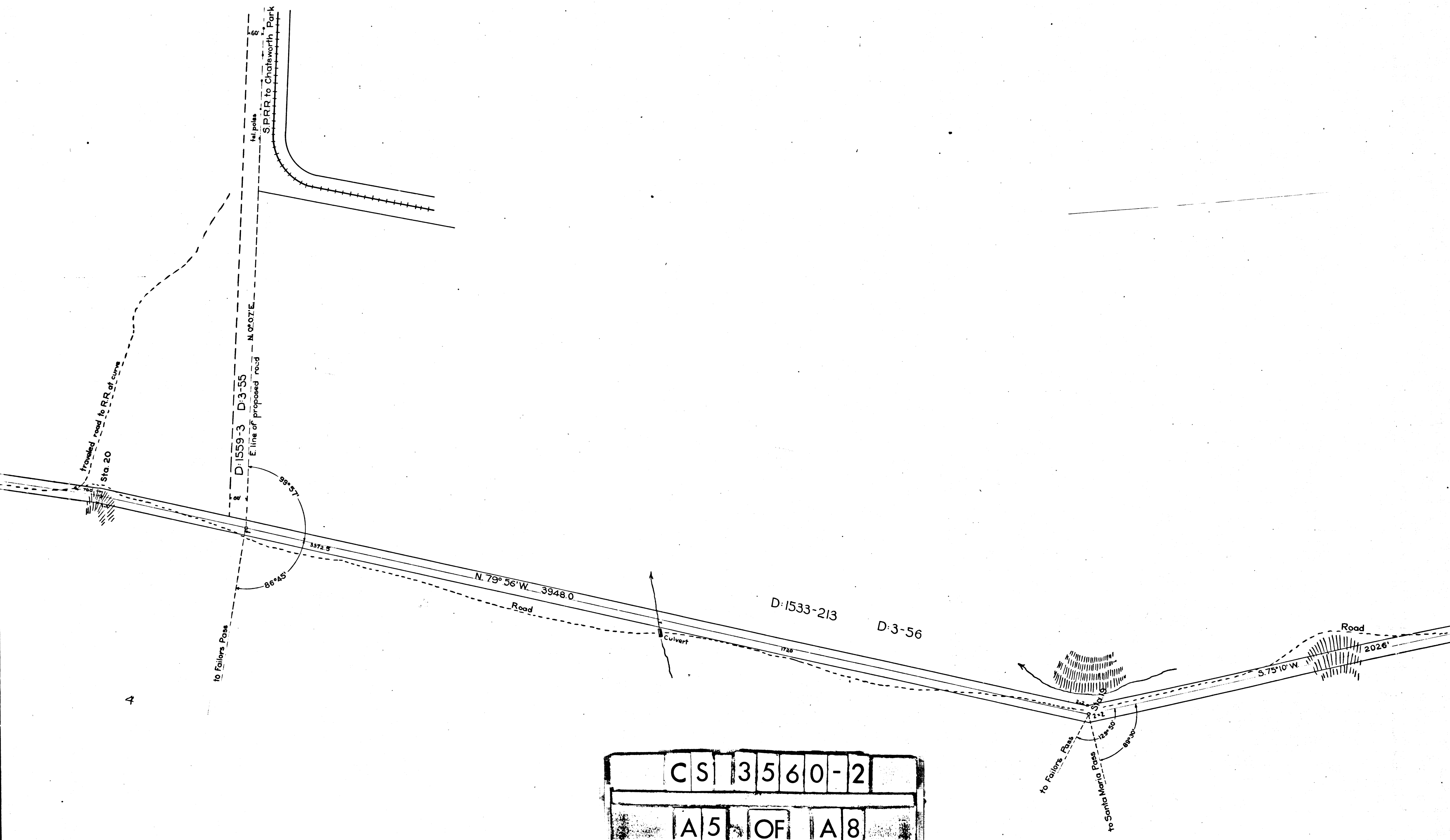
Handwritten notes and signatures at the bottom of the page.



	C	S	3	5	6	0	-	2	
	A	3		O	F		A	8	



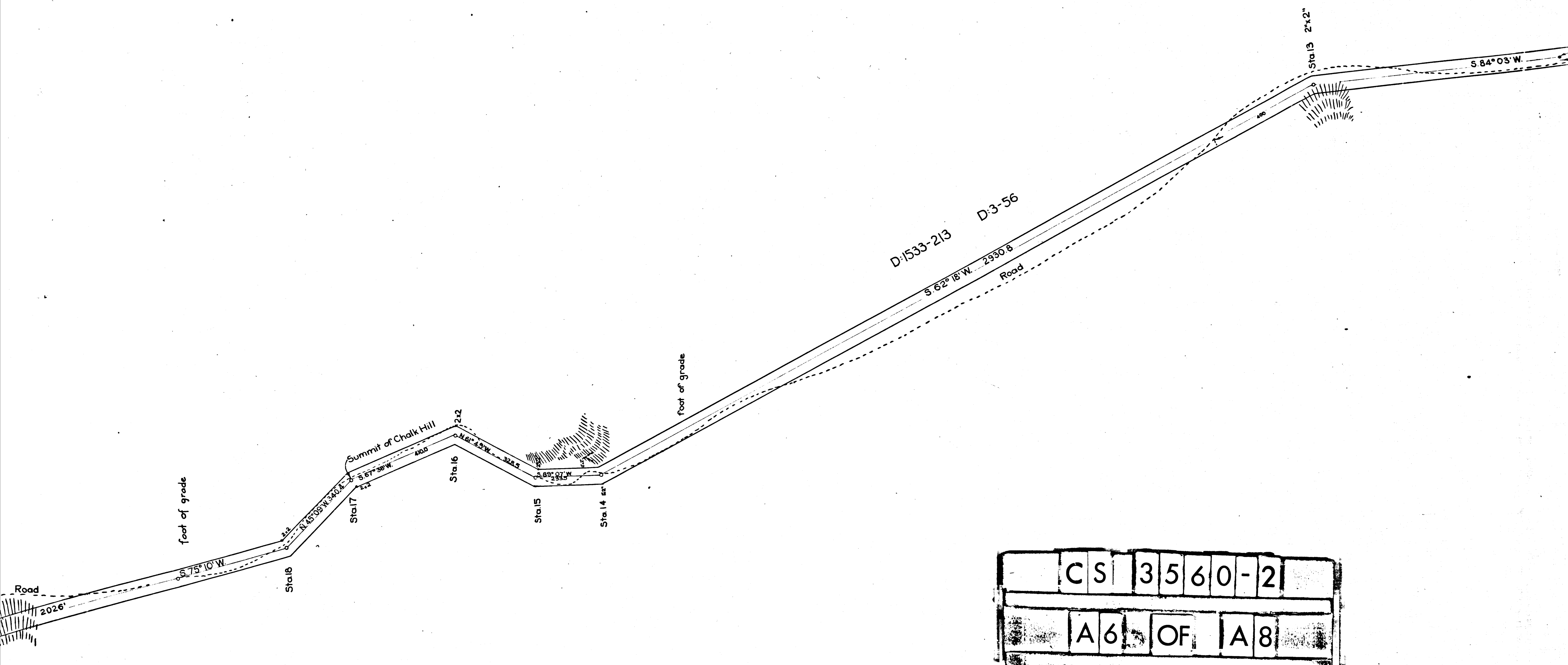
CS	3	5	6	0	-	2	
A	4	OF	A	8			



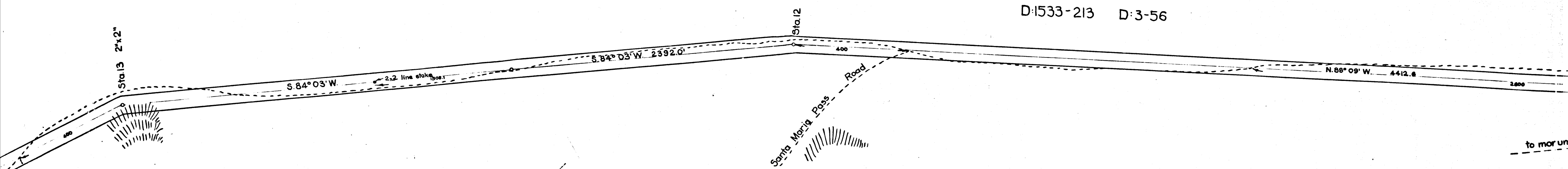
4

C	S	3	5	6	0	-	2
A	5	OF	A	8			

5



	C	S	3	5	6	0	-	2	
	A	6		O	F		A	8	



D:1533-213 D:3-56

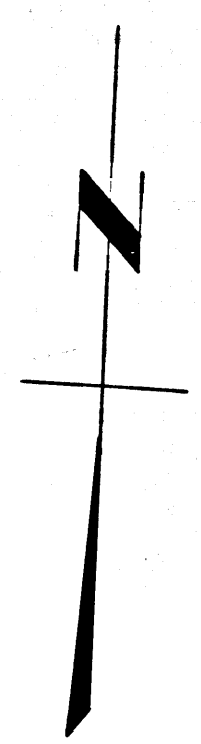
VENTURA BLVD.  
~~Los Angeles & Ventura Rca~~

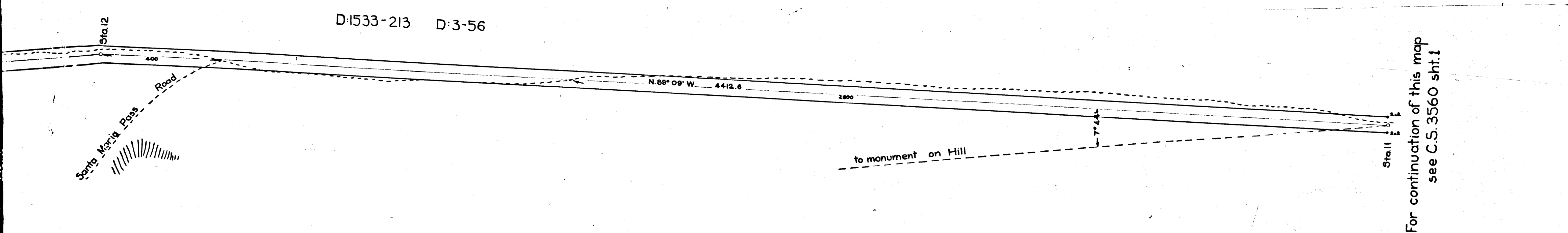
continued  
 See C.S. No. 4126  
 surveyed per Order of Board of Supervisors, dated March 11,  
 Jos. H. Smith Co. Sur. July 1901  
 F.B. 22-48-71, Courses true  
 SCALE 200' = 1"  
 County Surveyors Map No. 3560-2 of 4  
 INDEX 57,60

Highway established as Ventura Blvd. ~ D:13-150


Retraced by T. Kardos, June 1957  
 Checked by J. Biack

C	S	3	5	6	0	-	2
A	7	OF	A	8			





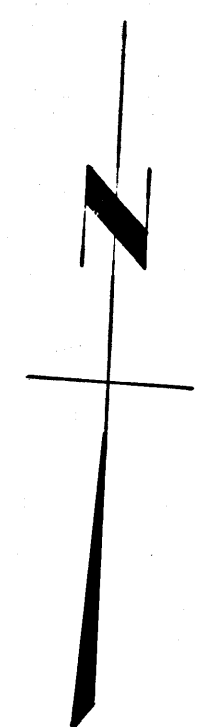
For continuation of this map  
see C.S. 3560 sht. 1

  
**VENTURA BLVD.**  
~~Los Angeles & Ventura Road~~

continued  
 See C.S. No. 4126  
 surveyed per Order of Board of Supervisors, dated March 11, 1901 by  
 Jos. H. Smith Co. Sur. July 1901  
 F.B. 22-48-71, Courses true  
 SCALE 200' = 1"  
 County Surveyors Map No. 3560-2 of 4  
 INDEX 57, 60

*Highway established as Ventura Blvd. ~ D:13-150*

Retraced by T. Kardos, June 1957  
 Checked by J. Black



**NOTE**

This map (condensed into 4 sheets) is a retracing of the original 8 sheet paper map.

	CS	3	5	6	0	-	2	
	A 8	OF	A 8					