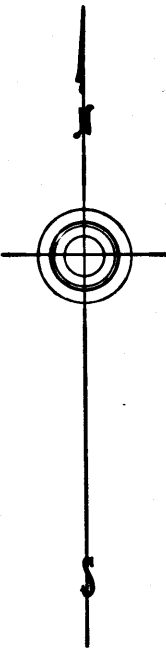
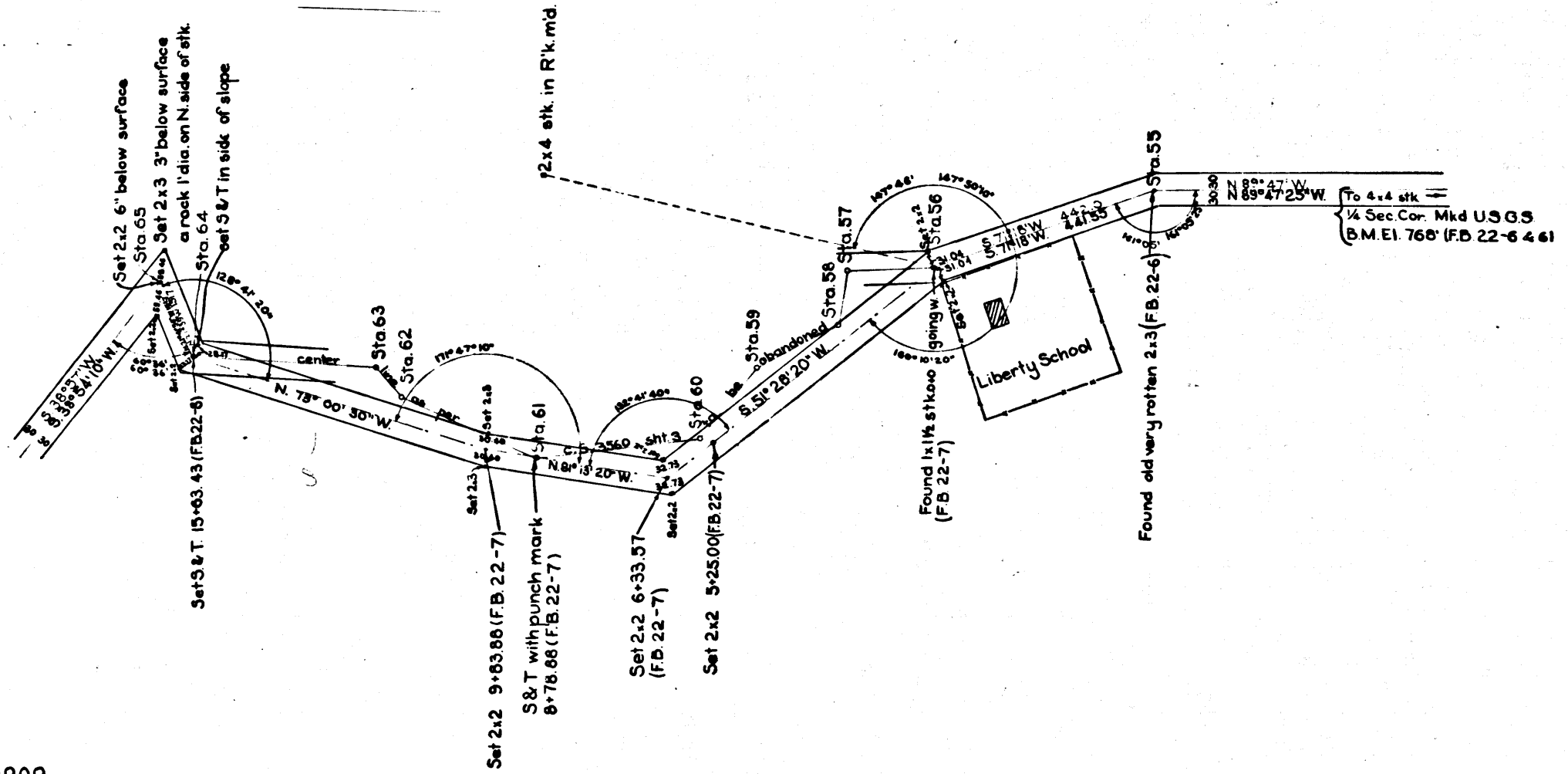


CS 3560-3
A1 OF A5

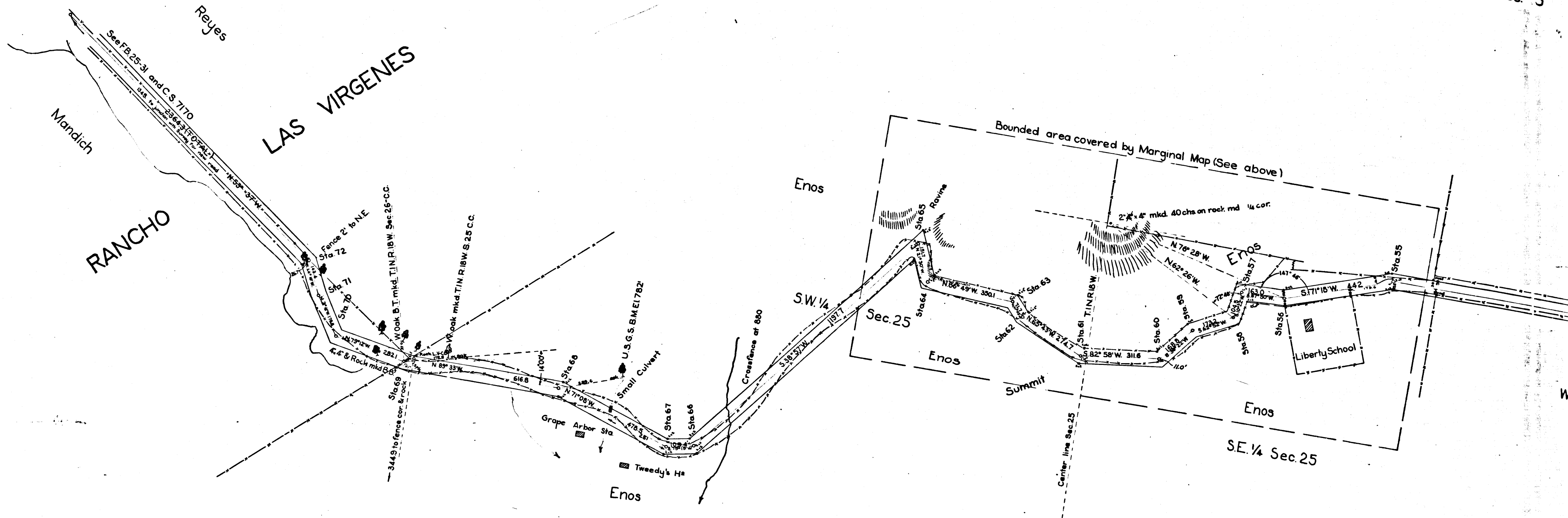


SCALE 1 in = 200 ft
FB.22-6 - Surveyed July 1909



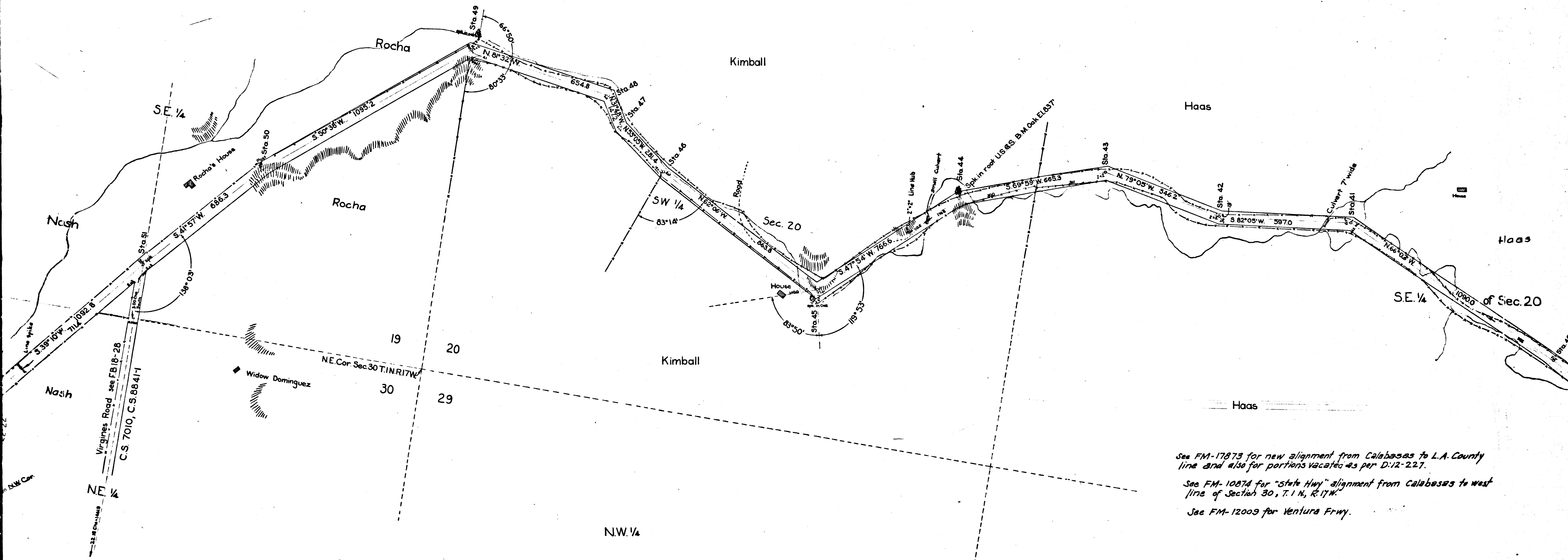
- NOTES:
1. Figures in red are taken from C.S. 3560-3
 2. Bearings projected from bearing of course between Stas. 55 & 56.
 3. Error of closure in angles, between \angle as per C.S. 3560-3, and \angle as per FB. 22-6-8, is $0^{\circ}02'50''$; this error apparently lies in the original angle at Sta. 56 (FB. 22-62).
 4. Stas. 64 & 65 were relocated by projecting courses and distances Easterly from course between Stas. 70A and 71A (C.S. 7170), as per C.S. 3560-3.

For continuation of this map
See C.S. 3560-4



NE 1/4 Sec. 25

SE 1/4 Sec. 25



See FM-17873 for new alignment from Calabasas to L.A. County line and also for portions vacated as per D:12-227.
 See FM-10874 for "state Hwy" alignment from Calabasas to west line of Section 30, T.1 N., R.17 W.
 See FM-12009 for Ventura Frwy.

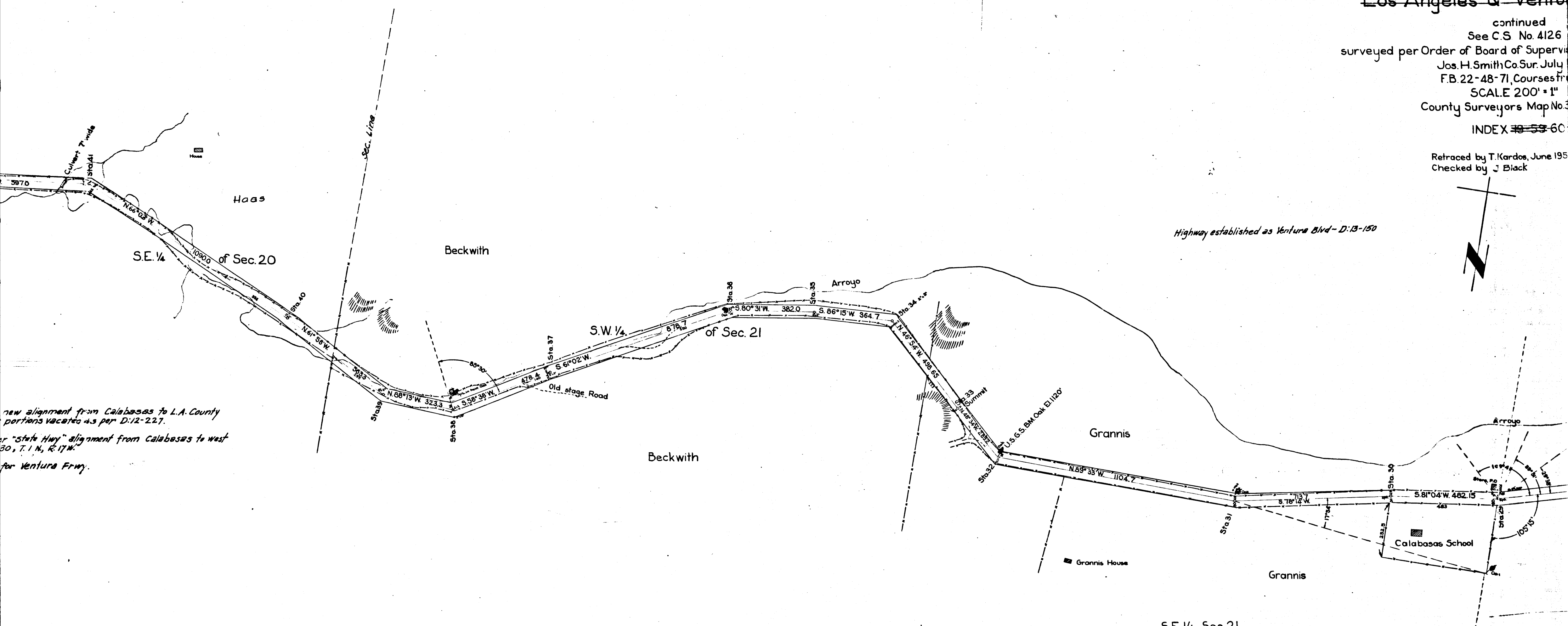
CS	3560-3
A3	OF A5

VENTURA BLV
Los Angeles & Ventu

continued
See C.S. No. 4126
surveyed per Order of Board of Supervisors
Jos. H. Smith Co. Sur. July
F.B. 22-48-71, Courses from
SCALE 200' = 1"
County Surveyors Map No. 3

INDEX 35-53-60

Retraced by T. Kardos, June 1953
Checked by J. Black



new alignment from Calabasas to L.A. County
portions vacated as per D:12-227.
or "State Hwy" alignment from Calabasas to west
30° T. 1 N., R. 17 W.
for Ventura Frwy.

CS 3560-3
A 4 OF A 5

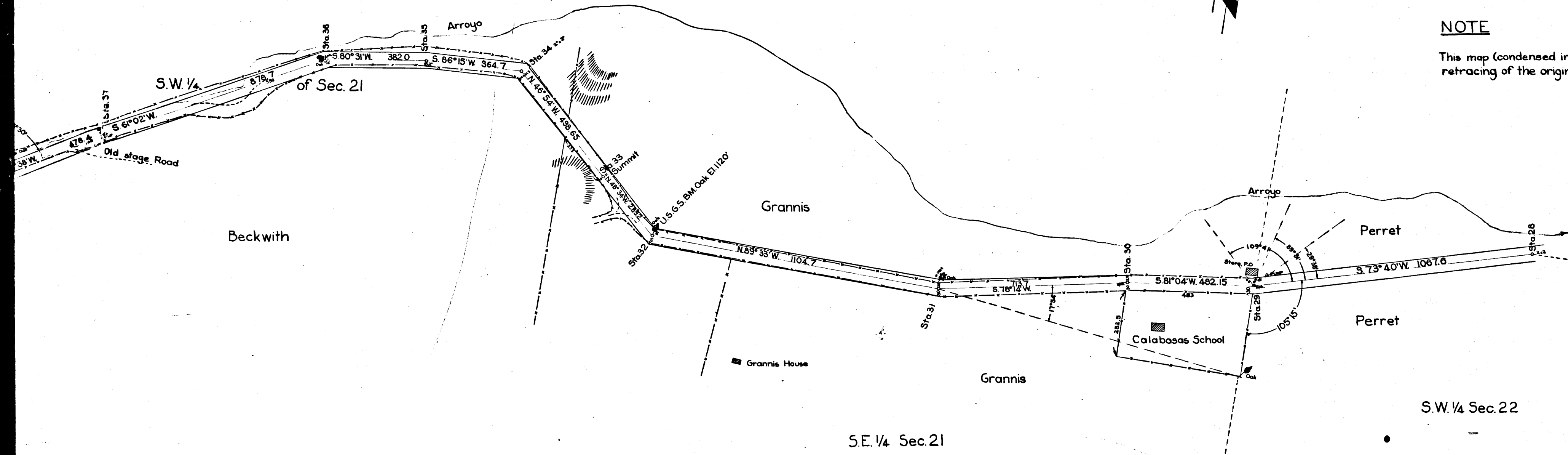
VENTURA BLVD.
~~Los Angeles & Ventura Road~~

continued
 See C.S. No. 4126
 surveyed per Order of Board of Supervisors, dtd. March 11, 1901 by
 Jos. H. Smith Co. Sur. July 1901
 F.B. 22-48-71, Courses true
 SCALE 200' = 1"
 County Surveyors Map No. 3560-3 OF 4 Shts
 INDEX ~~35-53-60-90~~

Retraced by T. Kardos, June 1957
 Checked by J. Black

Highway established as Ventura Blvd - D. 13-150

NOTE
 This map (condensed into 4 sheets) is a
 retracing of the original 8 sheet paper map



For continuation of this map
 See C.S. 3560-2

C	S	3	5	6	0	-	3
A	5	OF	A	5			