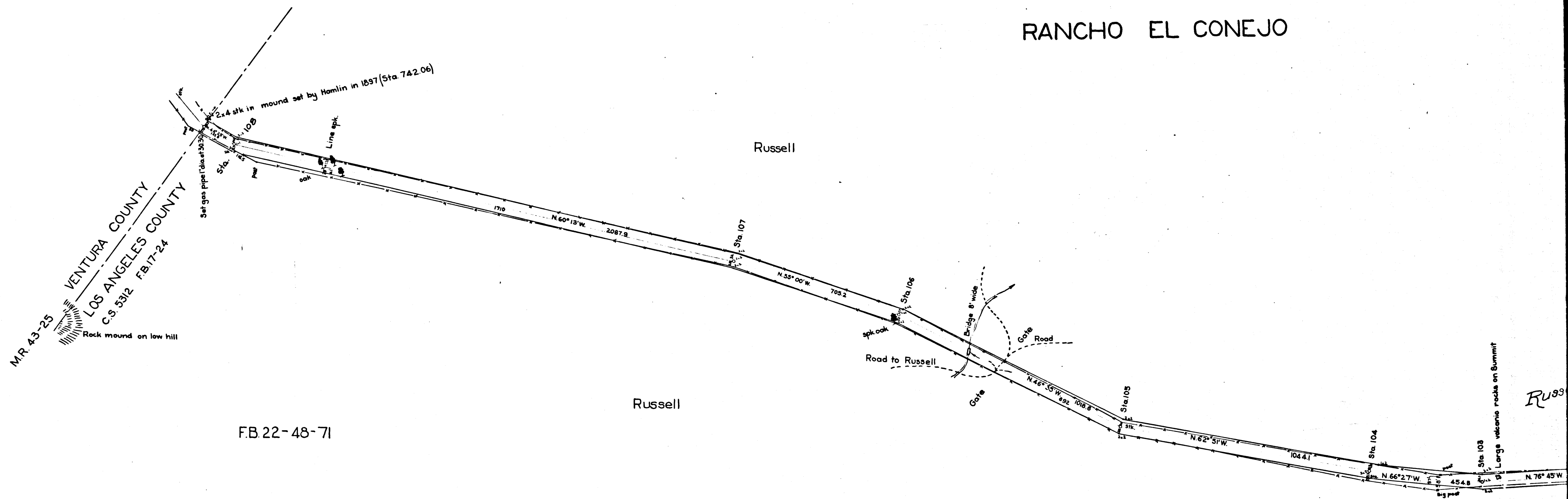


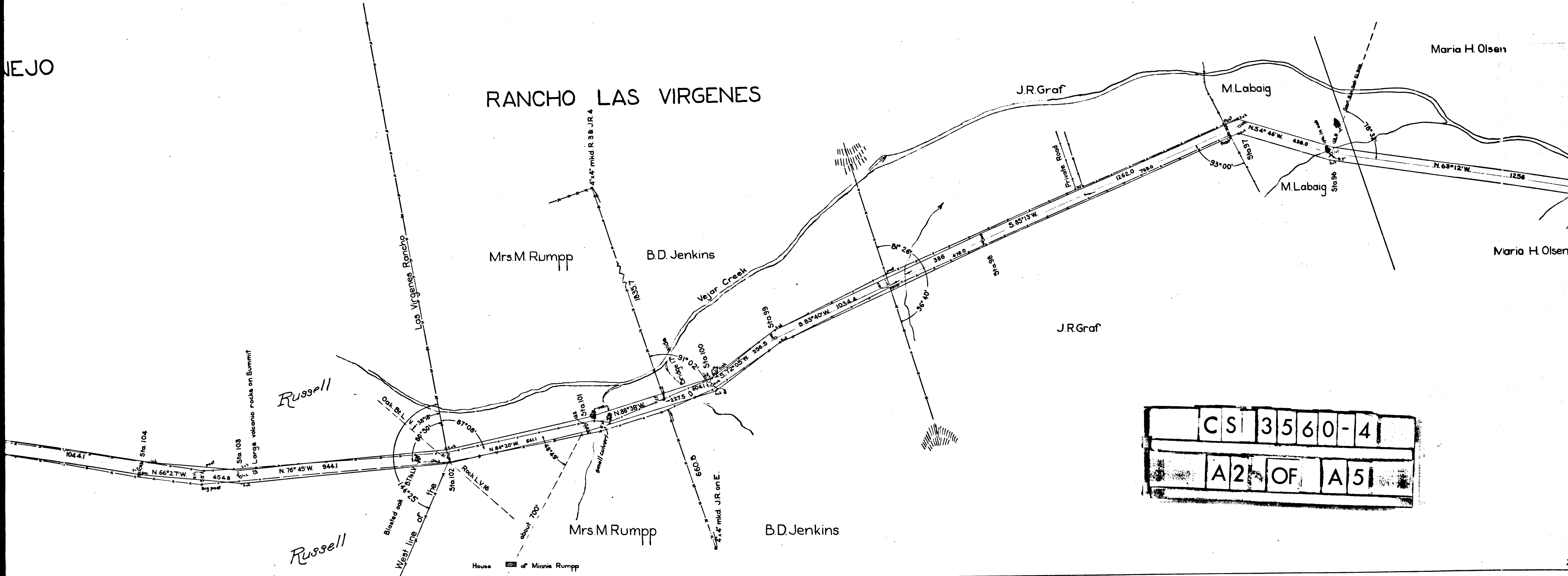
C	S	3	5	6	0	-	4
A	1	OF	A	5			

RANCHO EL CONEJO

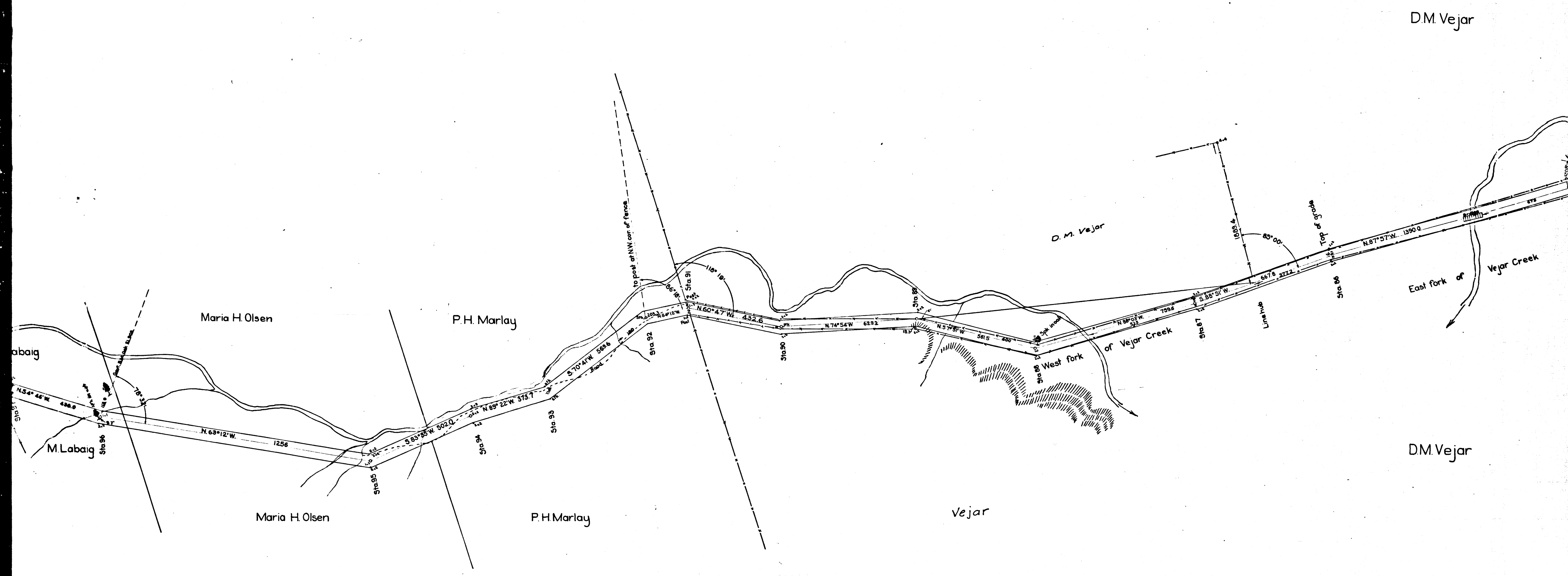


NEJO

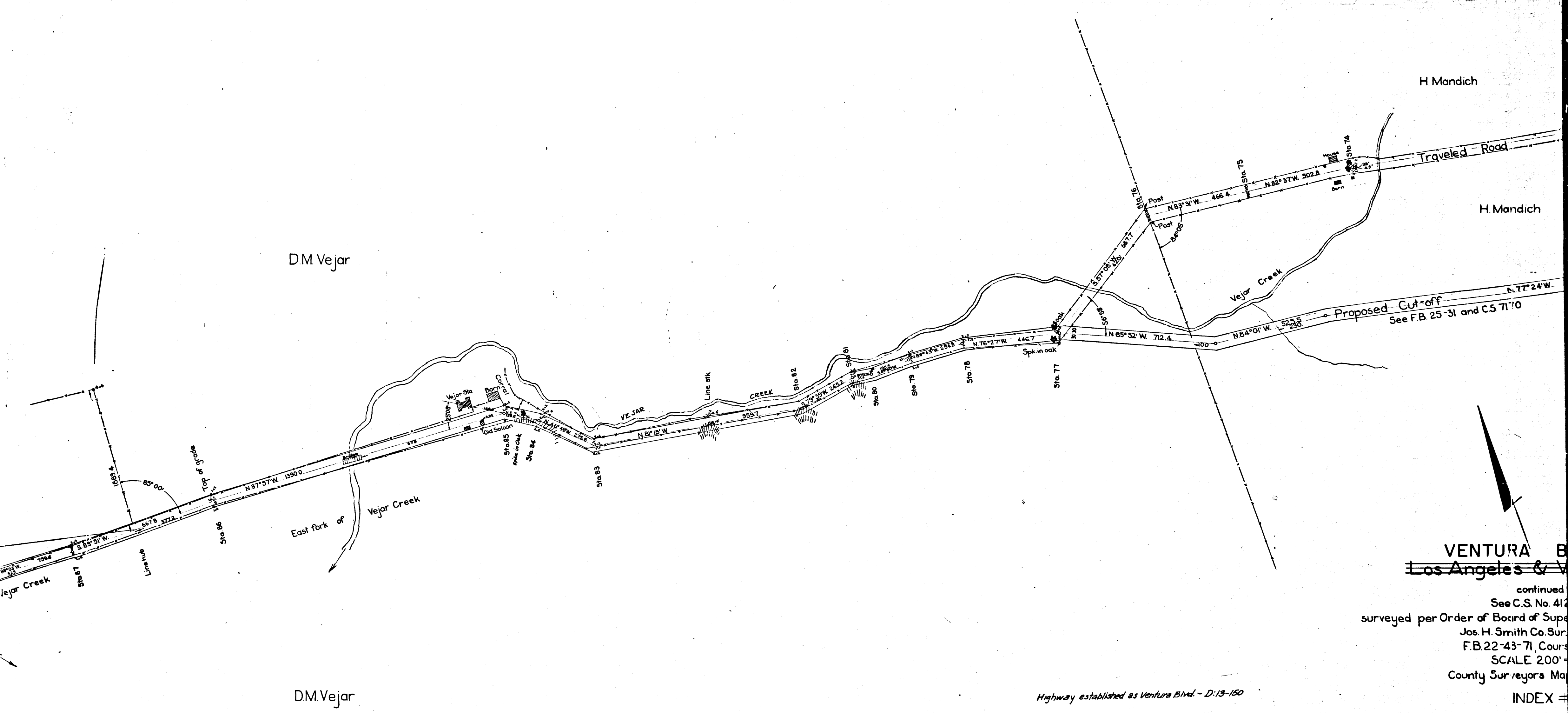
# RANCHO LAS VIRGENES



CS	3	5	6	0	-	4
A	2	OF	A	5		



C	S	3	5	6	0	-	4
A	3	OF	A	5			



DM. Vejar

H. Mandich

H. Mandich

DM. Vejar

**VENTURA BLVD**  
~~Los Angeles & Ventura~~

continued  
 See C.S. No. 412  
 surveyed per Order of Board of Supervisors  
 Jos. H. Smith Co. Surveyors  
 F.B. 22-43-71, Course  
 SCALE 200'  
 County Surveyors Map

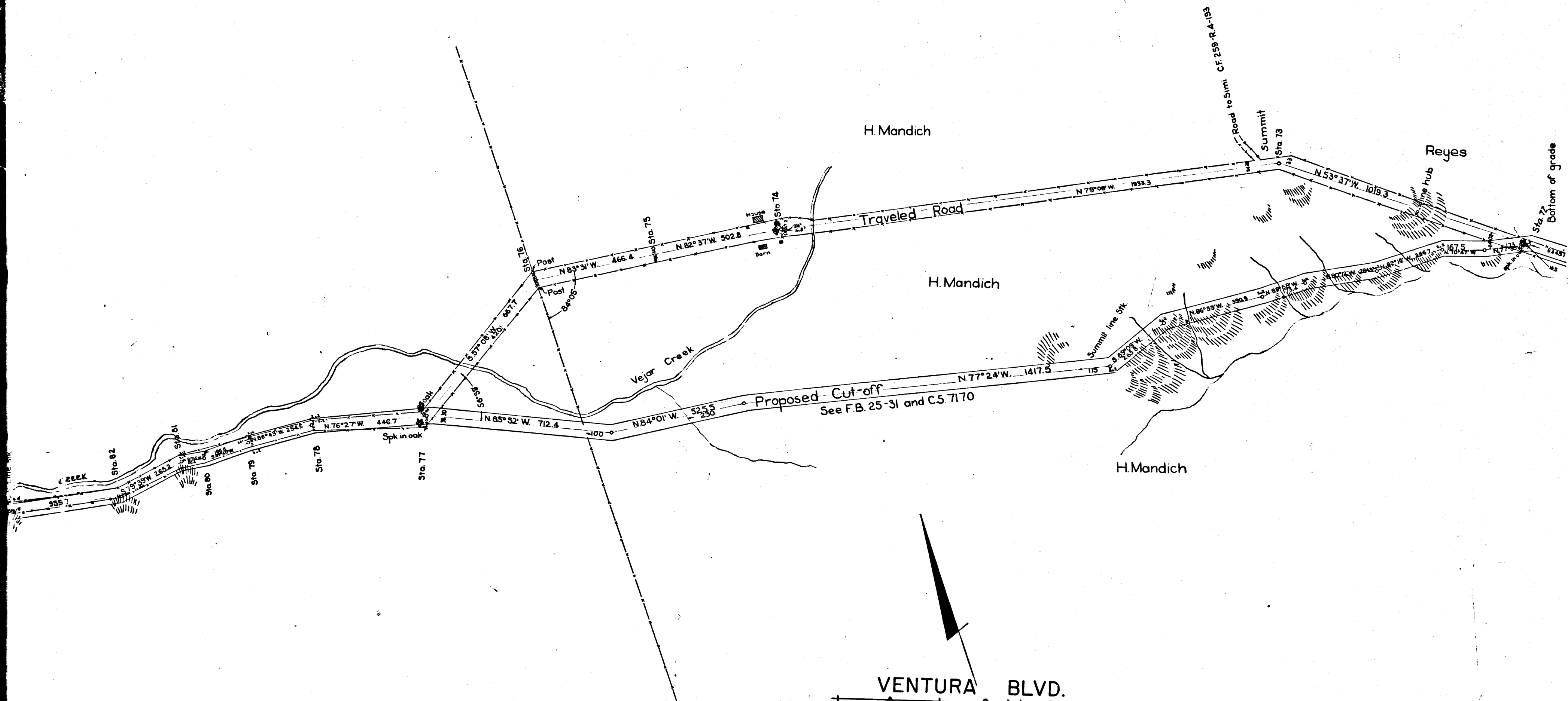
INDEX #

Retraced by T. Kardos, Jun  
 Checked by J. Black, Jun

Highway established as Ventura Blvd. - D:13-150

Note  
 This map (condensed into 4 sheets) is a  
 retracing of the original 8 sheet paper map

CS	3	5	6	0	-	4
A	4	OF	A	5		



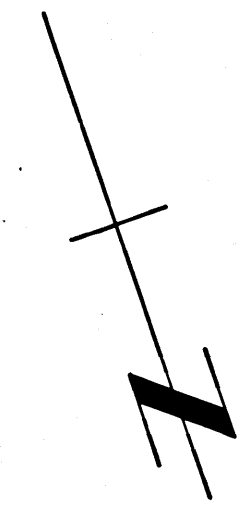
See sheet No. 3

**VENTURA BLVD.**  
~~Los Angeles & Ventura Road~~

continued  
 See C.S. No. 4126  
 surveyed per Order of Board of Supervisors, dated March 11, 1901 by  
 Jos. H. Smith Co. Sur. July 1901  
 F.B. 22-48-71, Courses true  
 SCALE 200'-1"  
 County Surveyors Map No. 3560-4 of 4  
 INDEX ~~to~~ 90, 93  
 Retraced by T. Kardos, June 1957  
 Checked by J. Black, 7-1-57

Highway established as Ventura Blvd. - D:13-150

Note  
 This map (condensed into 4 sheets) is a  
 retracing of the original 8 sheet paper map.



CS	3	5	6	0	-	4
A	5	OF	A	5		