

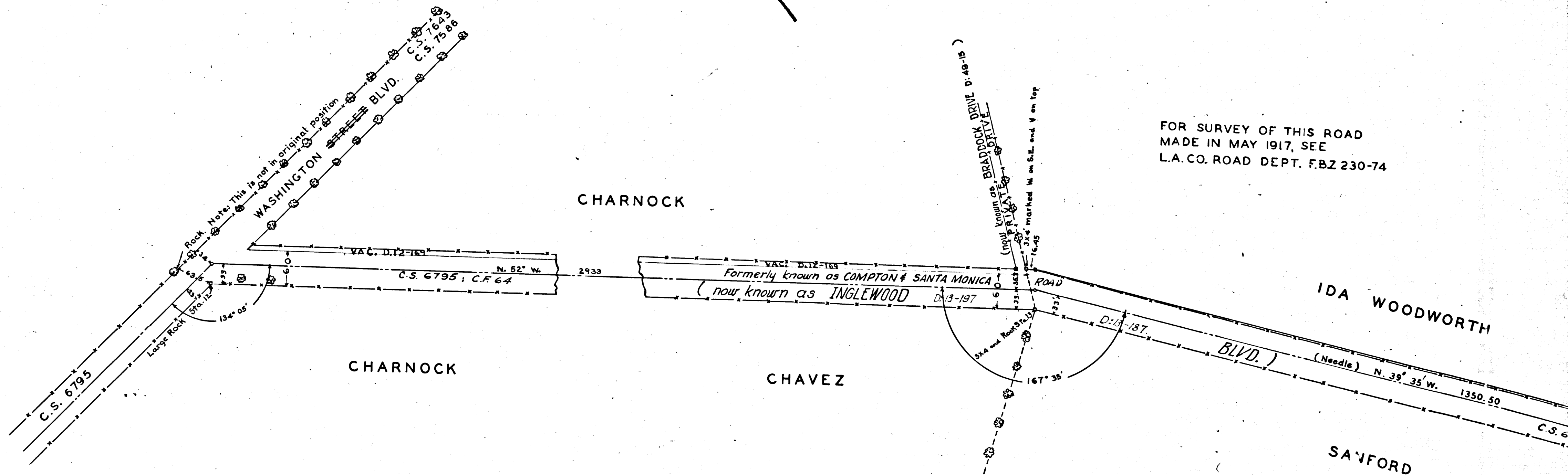
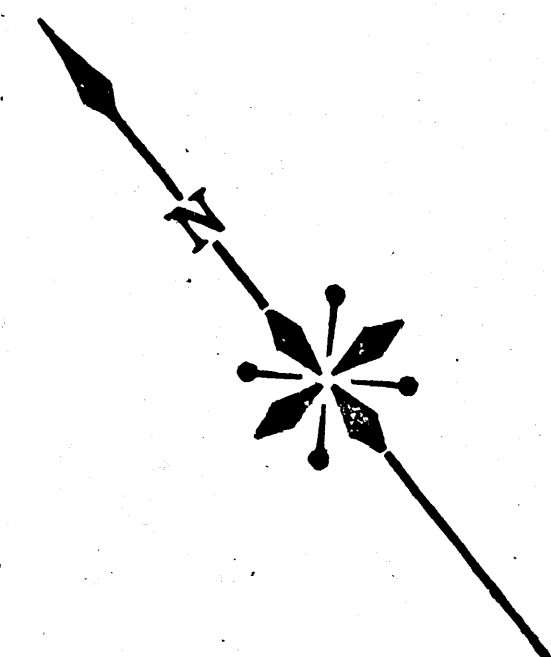
INGLEWOOD BLVD.  
MAP OF PORTION OF

~~COMPTON AND SANTA MONICA RO~~  
IN RANCHO LA BALLONA

JOS. SMITH, COUNTY SURVEYOR  
DECEMBER 1901  
COUNTY SURVEYORS MAP NO. 3565

SCALE: 100 FT. = 1 IN.  
VAR. 14° 30' E.  
F.B. 23-45  
I.M. 23

RETRACED FROM THE OLD TRACING CLOTH  
ORIGINAL MAP WHICH HAS BEEN DISCARDED.  
RETRACED BY D.C. JANNOPOULO. APR. 1958  
CHECKED BY R.J.B.



FOR SURVEY OF THIS ROAD  
MADE IN MAY 1917, SEE  
L.A. CO. ROAD DEPT. FBZ 230-74

	CS	3565	
A1	OF	A2	

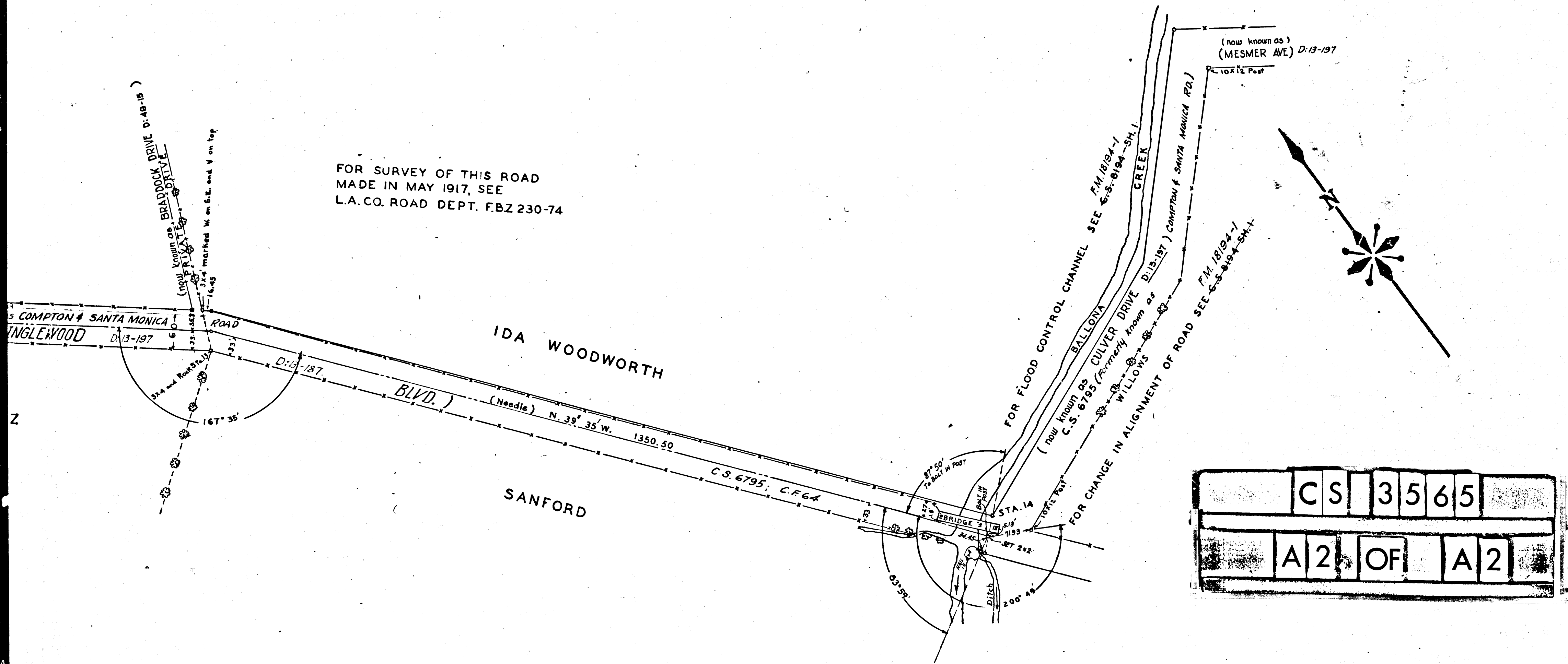
INGLEWOOD BLVD.  
 MAP OF PORTION OF  
~~COMPTON AND SANTA MONICA ROAD~~  
 IN RANCHO LA BALLONA

JOS. SMITH, COUNTY SURVEYOR  
 DECEMBER 1901  
 COUNTY SURVEYORS MAP NO. 3565

SCALE: 100 FT. = 1 IN.  
 VAR. 14° 30' E.  
 F.B. 23-45  
 I.M. 23

RETRACED FROM THE OLD TRACING CLOTH  
 ORIGINAL MAP WHICH HAS BEEN DISCARDED.  
 RETRACED BY D.C. JANNOPOULO. APR. 1958  
 CHECKED BY R.V.B.

FOR SURVEY OF THIS ROAD  
 MADE IN MAY 1917, SEE  
 L.A. CO. ROAD DEPT. FBZ 230-74



CS	3	5	6	5
A2	OF	A2		