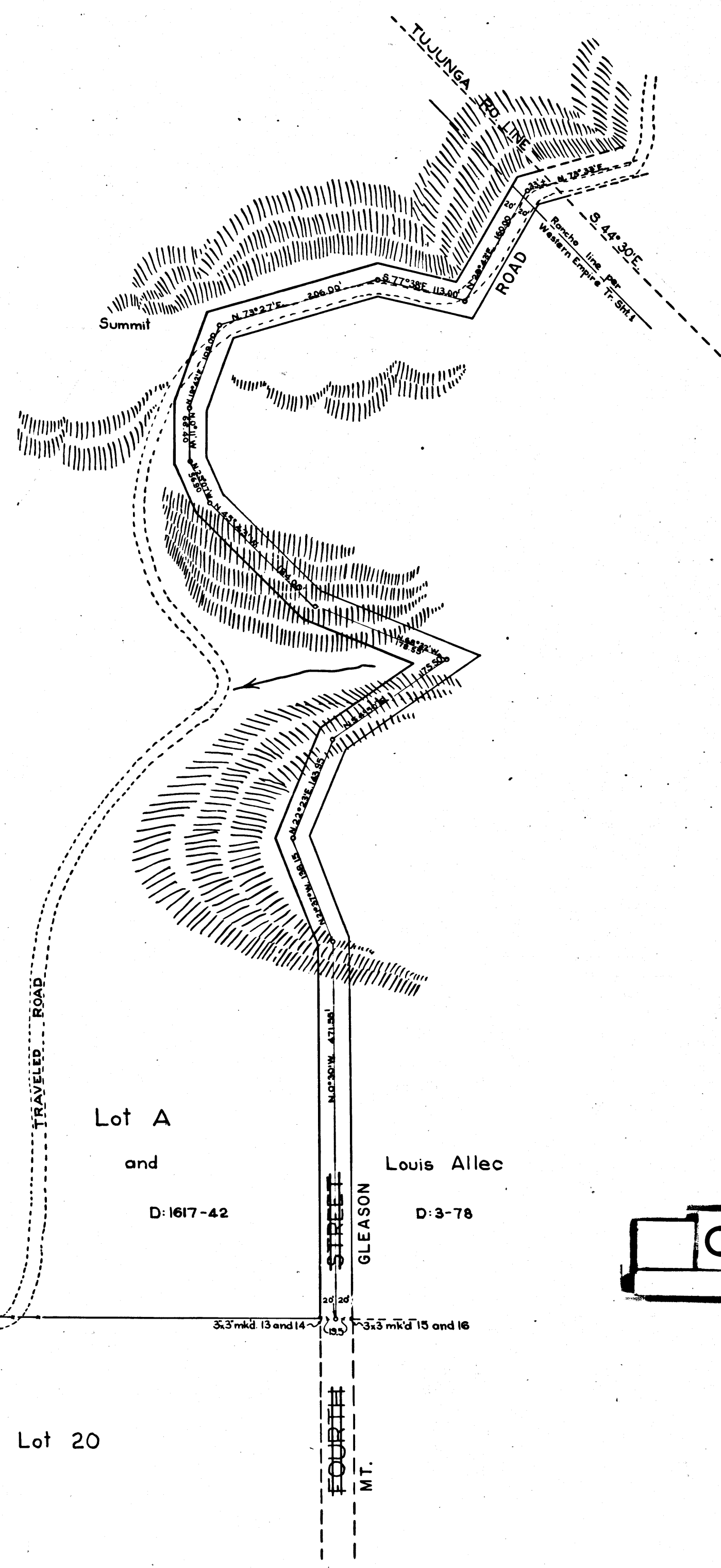
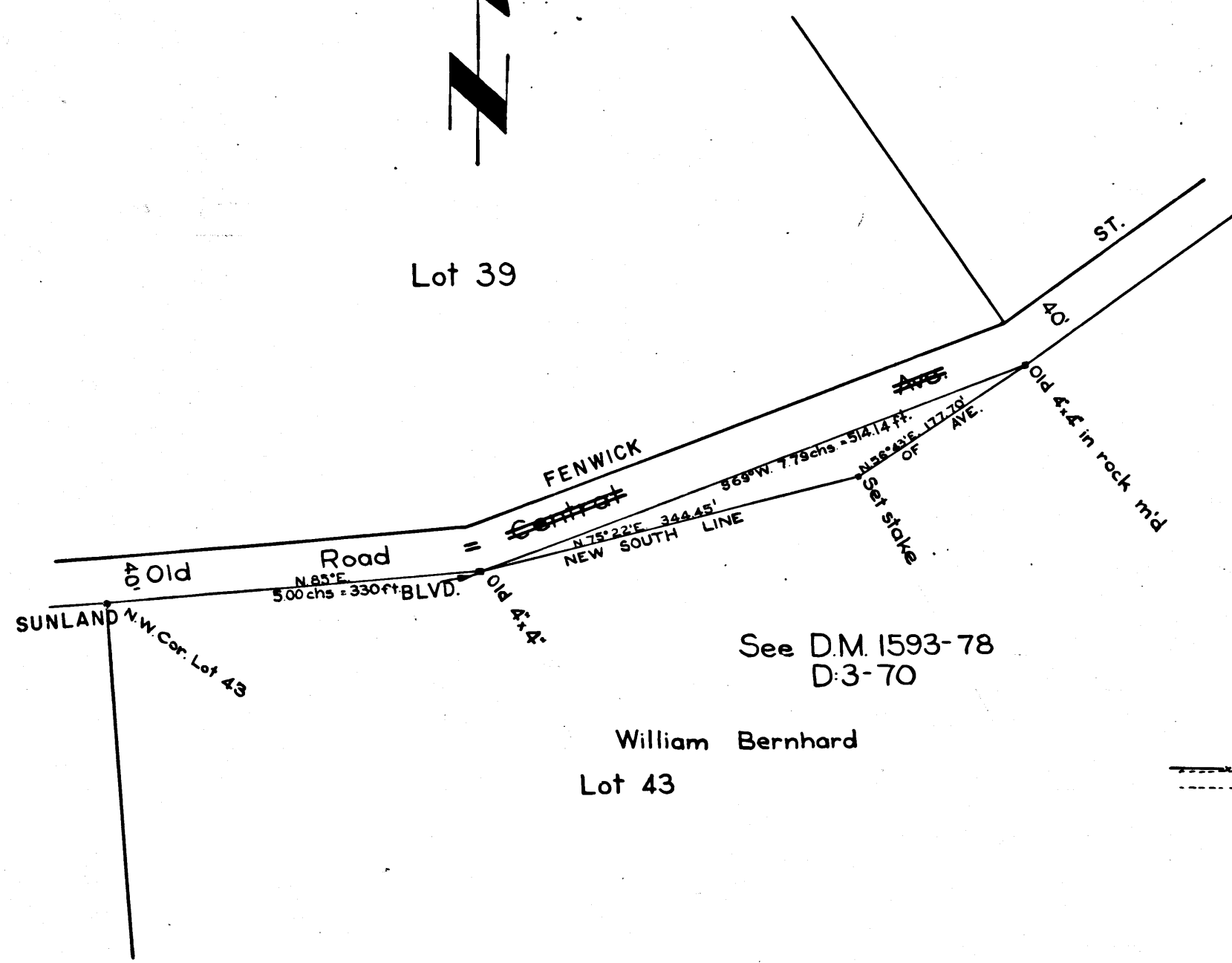


FENWICK ST.
 MAP
 Showing widening of
~~CENTRAL AVE~~
 ON N. SIDE OF PART OF
 Lot 43
 OF THE
 West portion of
 TUJUNGA RANCH
 Jos. H. Smith Co. Sur., Jan. 14-1902
 SCALE-1"=100'-F.B. 25-4

52-B-3



MT. GLEASON RD.
 MAP
 OF CHANGE IN LINE OF
~~FOURTH STREET~~
 Through Lots A and B.
 OF REPLAT OF PORTION OF
 MONTE VISTA

M.R. 72-38

Jos. H. Smith Co Sur.
 Jan. 14th 1902
 F.B. 25-4

County Surveyors Map No. 3566

INDEX 52

FOR RELOCATION OF A PORTION OF THIS STREET
 SEE 231817
 Retraced by T.K. AUG. 1957
 Checked by J.B.

CS 3566