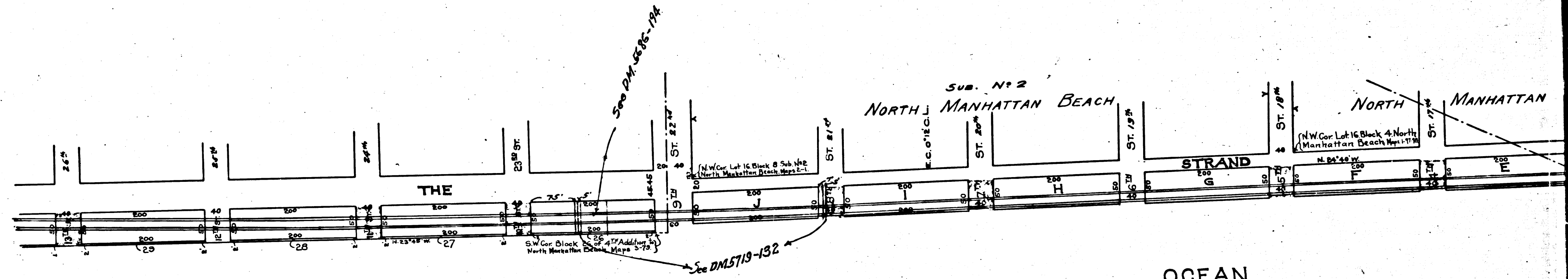


PACIFIC

OCEAN

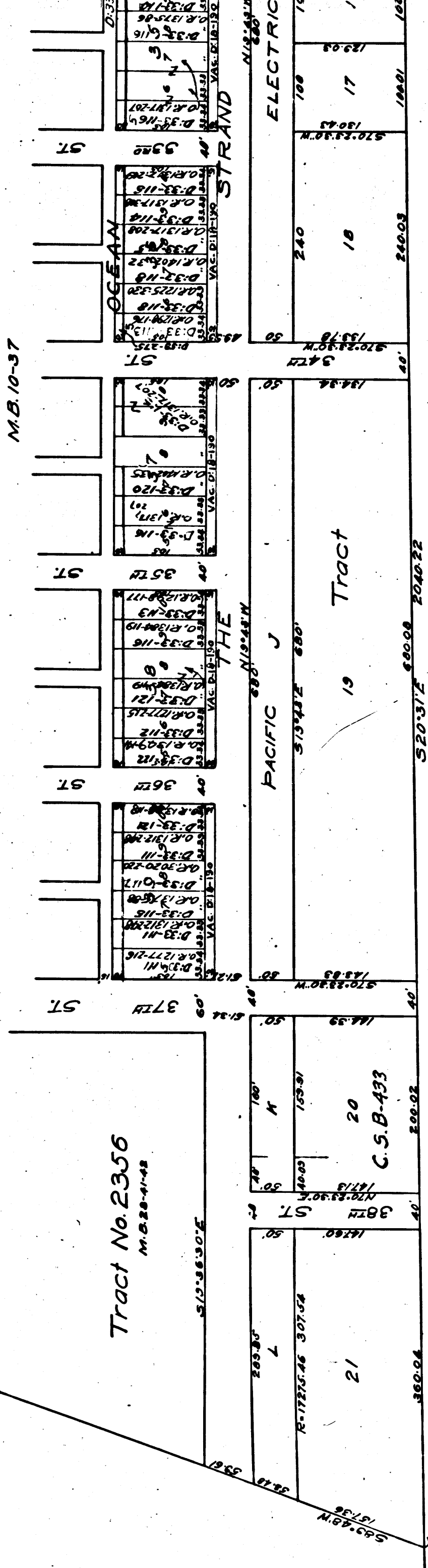


PACIFIC

OCEAN

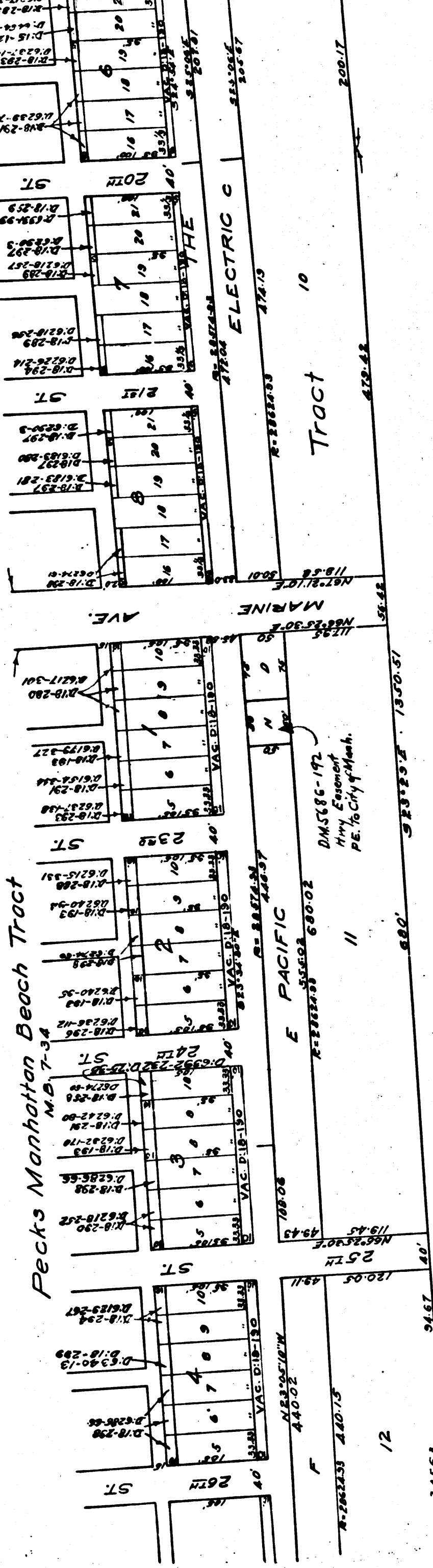
CS	3	6	3	8	SHT. 1
A	1	OF	A	2	

Pecks Manhattan Beach Tract No. 2
M.B. 10-37



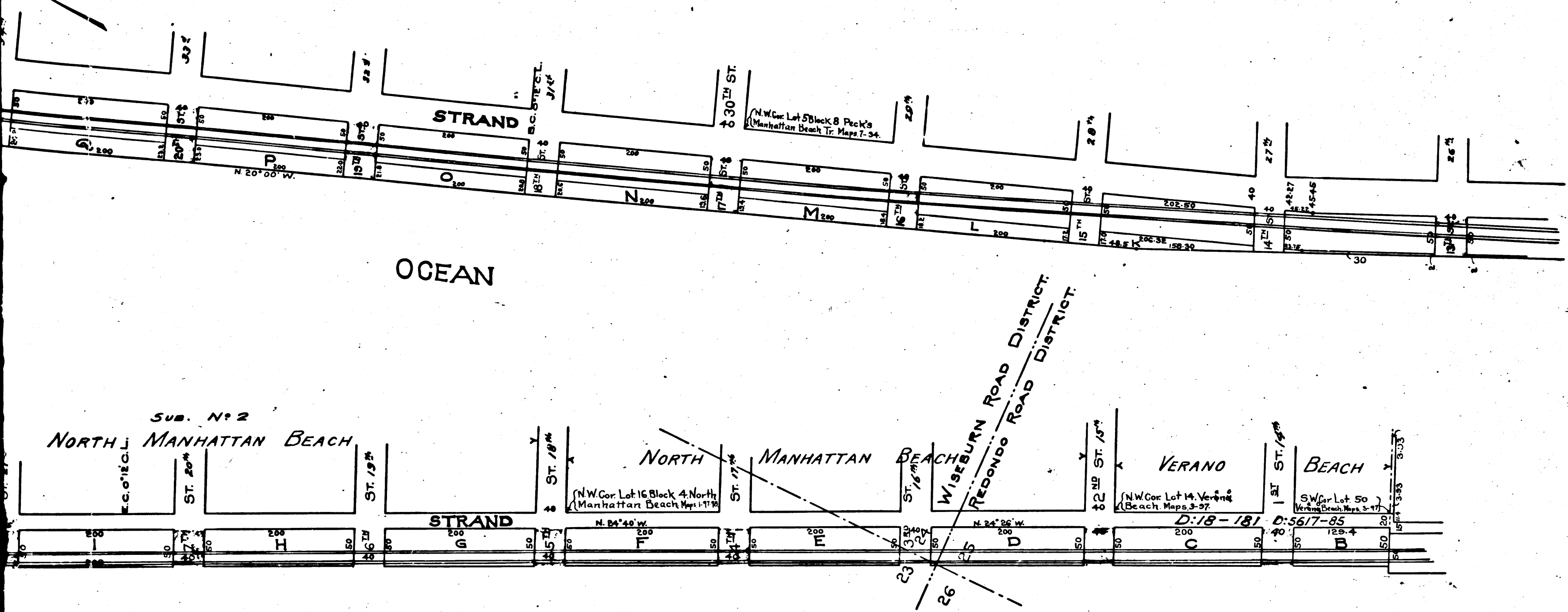
Vac. per "The Strand" D:30-79 Ord. 220

Sub. No 2
North Manhattan Beach
M.B. 2-1



CS 3638 SHT. 2
A 1 OF A 2

Speedway nam
Speedway established



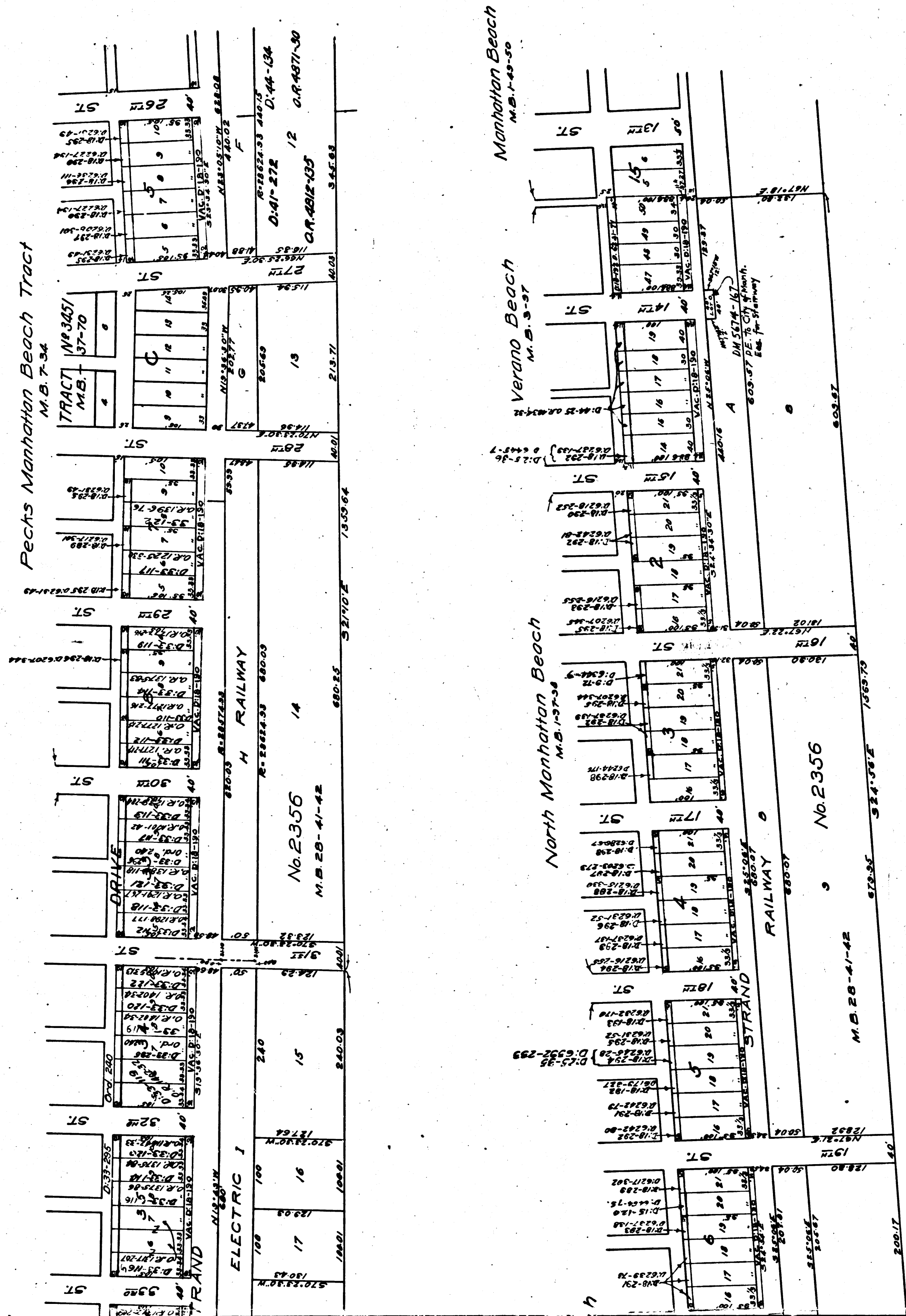
NOTE:
 FOR VACATION OF STREETS SEE D:12-10.RD. BK.9-378
 VAC. POR. "THE STRAND" ORD.168 D:18-190
 " " " " " 220 D:30-79
 Street Numbers in red per D:13-2

PLAT

SHOWING STREETS TO BE VACATED IN 4TH ADDITION TO NORTH MANHATTAN BEACH, M.B. 3-79, IN SUB. NO. 2, NORTH MANHATTAN BEACH, M.B. 2-1, AND IN NORTH MANHATTAN BEACH, M.B. 1-97-98. PROPERTY OF GEO. H. PECK, ET. AL. JUNE 1907.

SUBJECT STREETS SHOWN IN RED
 COUNTY SURVEYOR'S MAP NO. 3638
 SHT. NO. 1 OF 2 SHEETS
 SCALE: 1" = 100 FT.
 OFFICE OF COUNTY SURVEYOR. R.E.B.
 I. M. 25

CS	3	6	3	8	SHT.	1
A	2	OF	A	2		



PLAT
 SHOWING VACATION OF PORTIONS OF THE STRAND
 AND WIDENING OF PORTIONS OF THE FIRST ALLEY
 EAST OF THE STRAND IN THE CITY OF MANHATTAN
 BEACH CALIFORNIA

COUNTY SURVEYORS MAP NO. 3638-2 OF 2 SHTS.
 APRIL 1916
 J. E. ROCKHOLD
 COUNTY SURVEYOR

I. M. 23, 25

This "Photostat" reproduction filed 12-9-57

Highway named Ord 19, D: 25-11
 way established as Ocean Drive D: 25-200 Ord. 197

C	S	3	6	3	8	SHT. 2
A	2	OF	A	2		