

PLAN & PROFILE

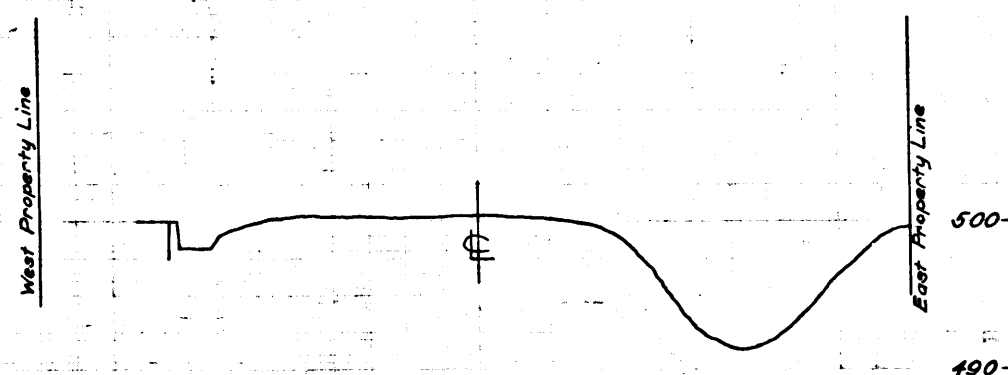
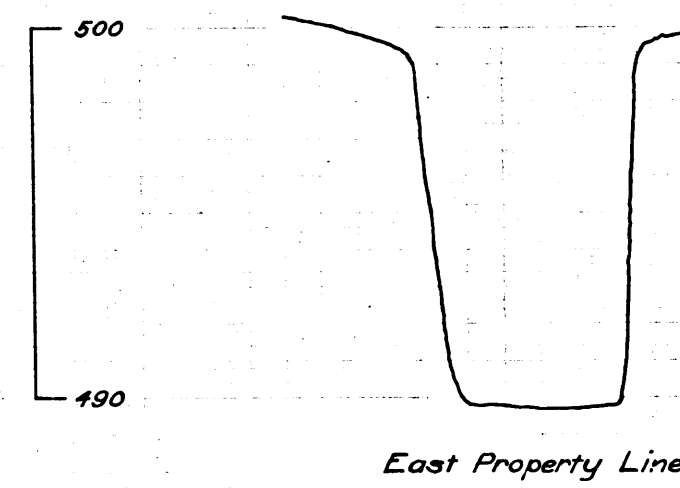
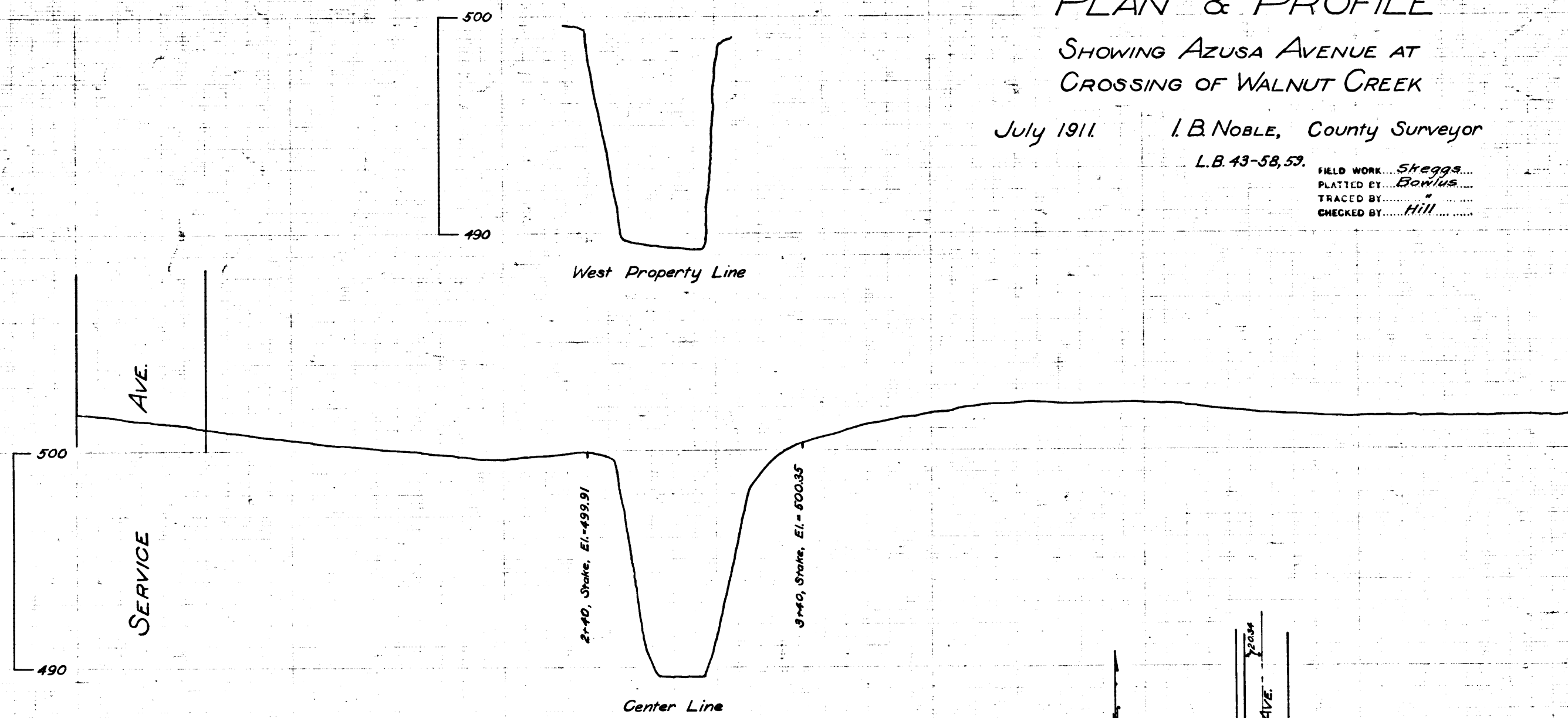
SHOWING AZUSA AVENUE AT CROSSING OF WALNUT CREEK

July 1911.

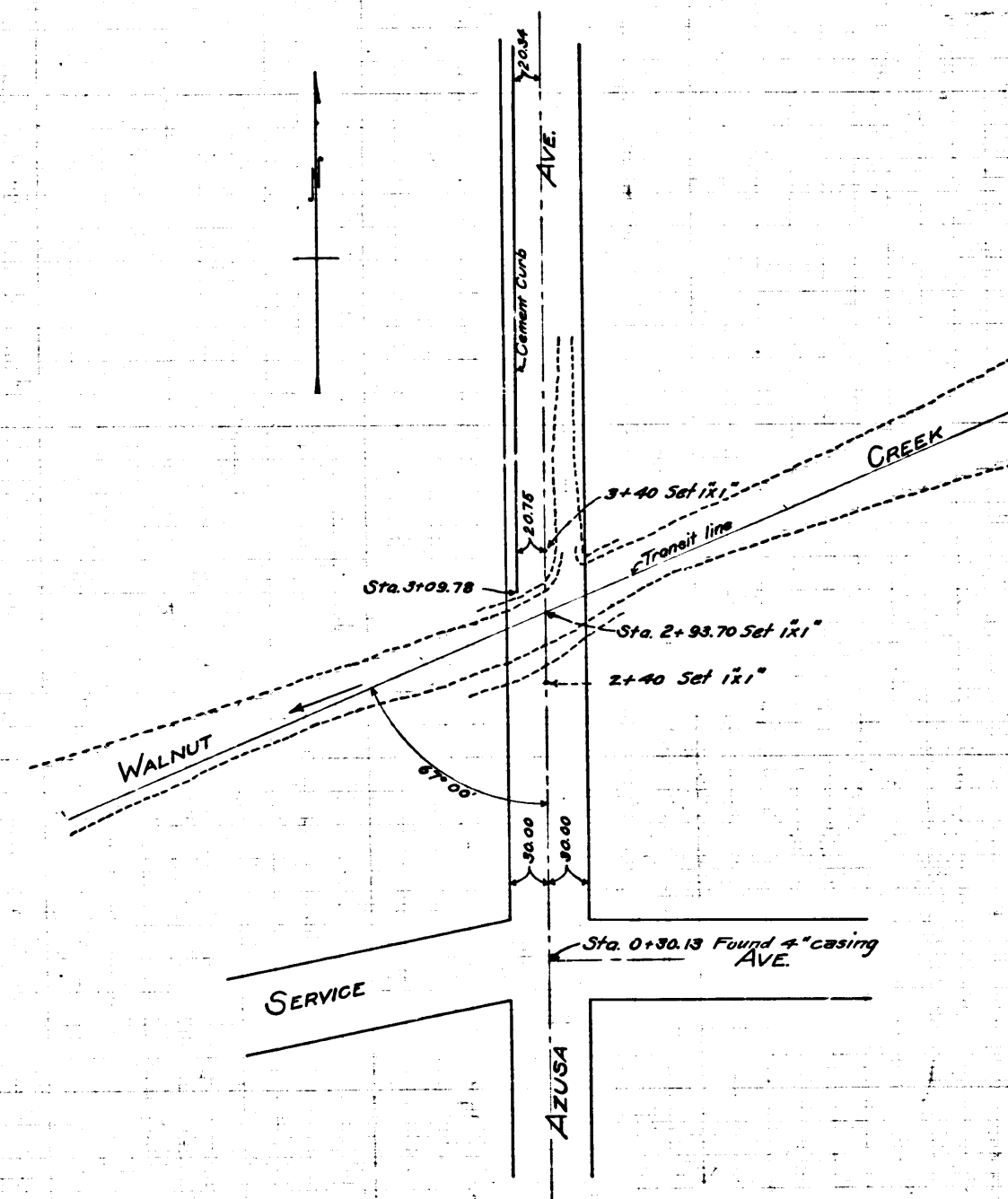
I. B. NOBLE, County Surveyor

L.B. 43-58, 53.

FIELD WORK... *Steggs*
PLATTED BY... *Bowles*
TRACED BY...
CHECKED BY... *Hill*



Cross-section
Sta. 3+40.00
Scale: 1 in. = 10 ft.



CS 3641