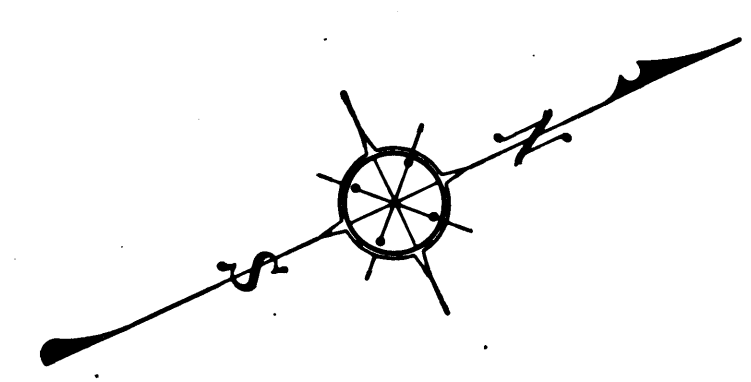
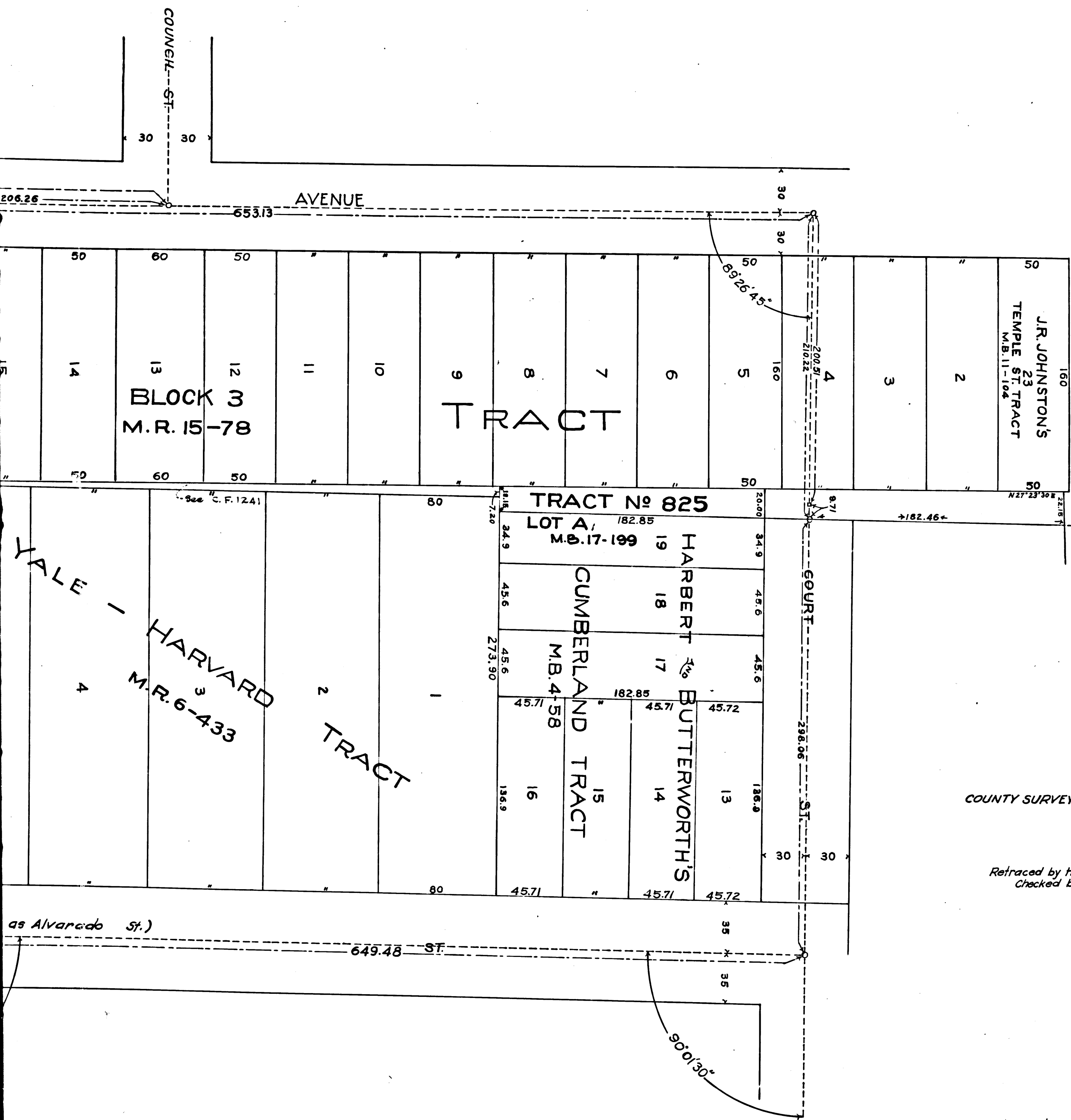


C	S	3	6	4	3
A	1	OF	A	2	



ROSEMONT TRACT
 SHOWING REMAINING PORTION OF RESERVED STRIP
 JULY 1911 I.B. NOBLE COUNTY SURVEYOR
 PLATTED FROM CITY ENGINEER'S FIELD NOTES
 SEE M-36
 SCALE: 1 IN = 40 FT.
 I.M. 9

COUNTY SURVEYORS MAP NO. 3643

Retraced by H. Barrio, May 1959
 Checked by R.J. Black

CS	3	6	4	3
A	2	OF	A	2