

CS 3665
A1 OF B2

MAP OF
Portions of Secs. 31 & 32 T.1S. R.12W.
SHOWING
MICHIGAN AVENUE
GRAND VIEW AVENUE

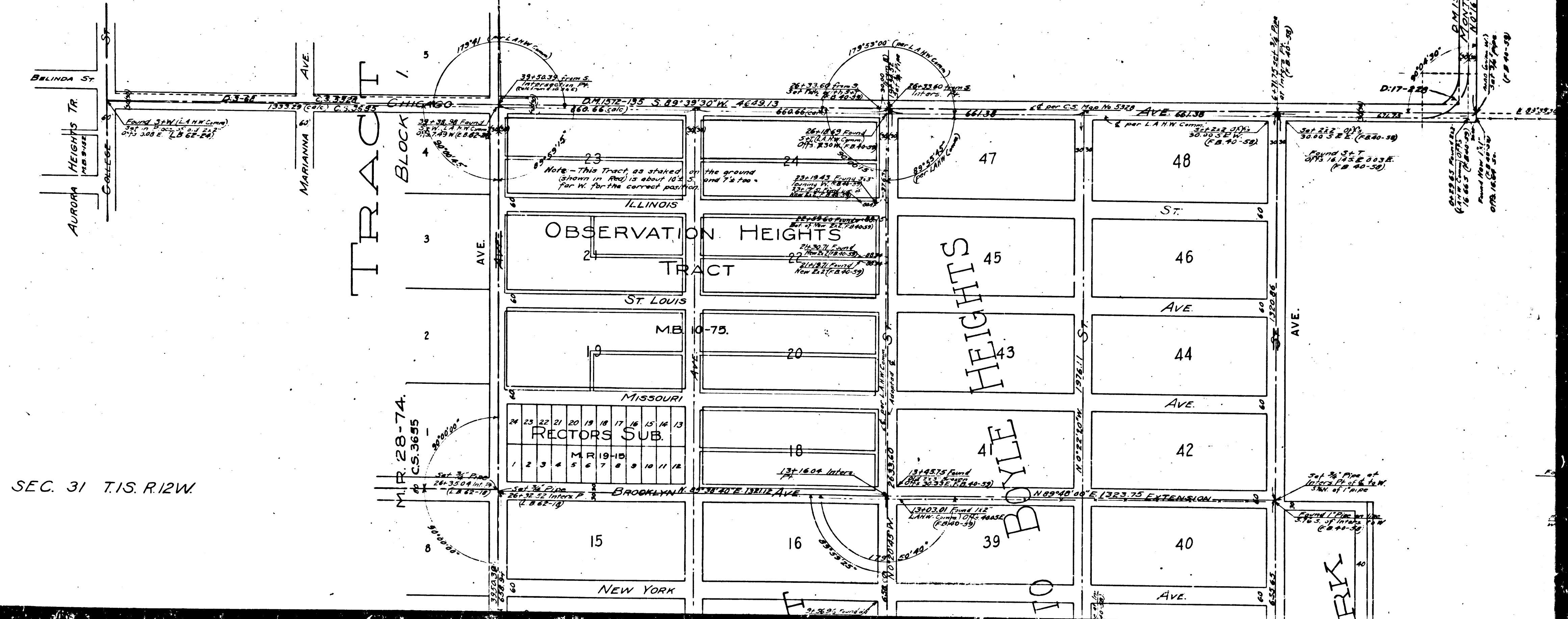
From ~~Mountain View Avenue~~
to ~~Ocean View Avenue~~

COUNTY SURVEYORS MAP NO. 3665
February, 1913. I. B. Noble, County Surveyor.
Scale: 1"=200'
F.B. 40-57. L.B. 62-18.

FIELD WORK (Steggs)
OFFICE WORK (Bawlus)
CHECKED BY Wetters

Note: Courses based on course of Ford St. as determined by solar observation.

INDEX 36



SEC. 31 T.1S. R.12W.

MAP OF
 Portions of Secs. 31 & 32 T.1S. R.12W.
 SHOWING
MICHIGAN AVENUE
GRAND VIEW AVENUE

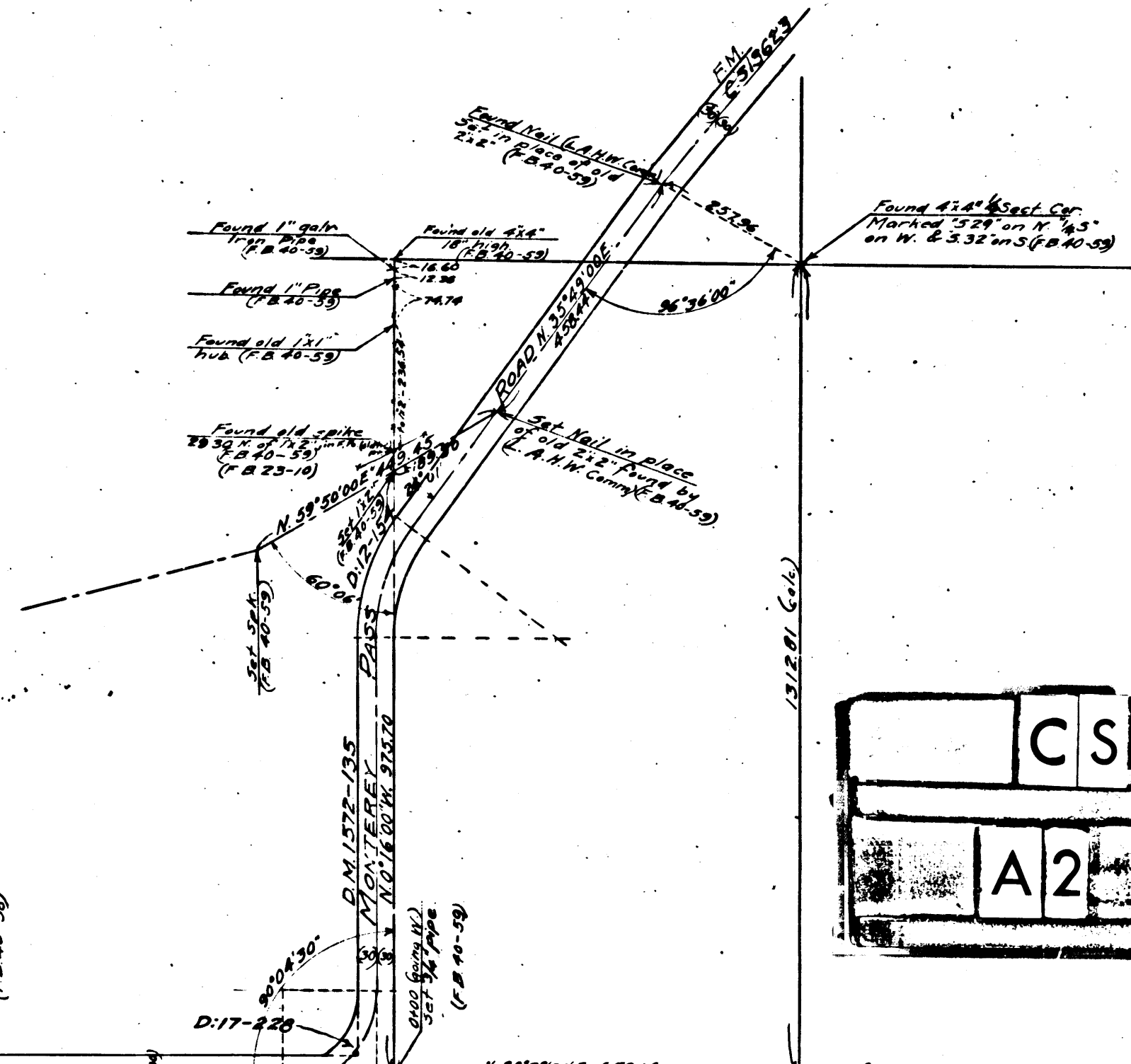
From ~~Mountain View Avenue~~
 to ~~Ocean View Avenue~~

EASTERN AVE.
 DANGLER AVE.
 COUNTY SURVEYORS MAP NO. 3665
 February, 1913. I. B. Noble, County Surveyor.
 Scale: 1" = 200'.
 F.B. 40-57. L.B. 62-18.

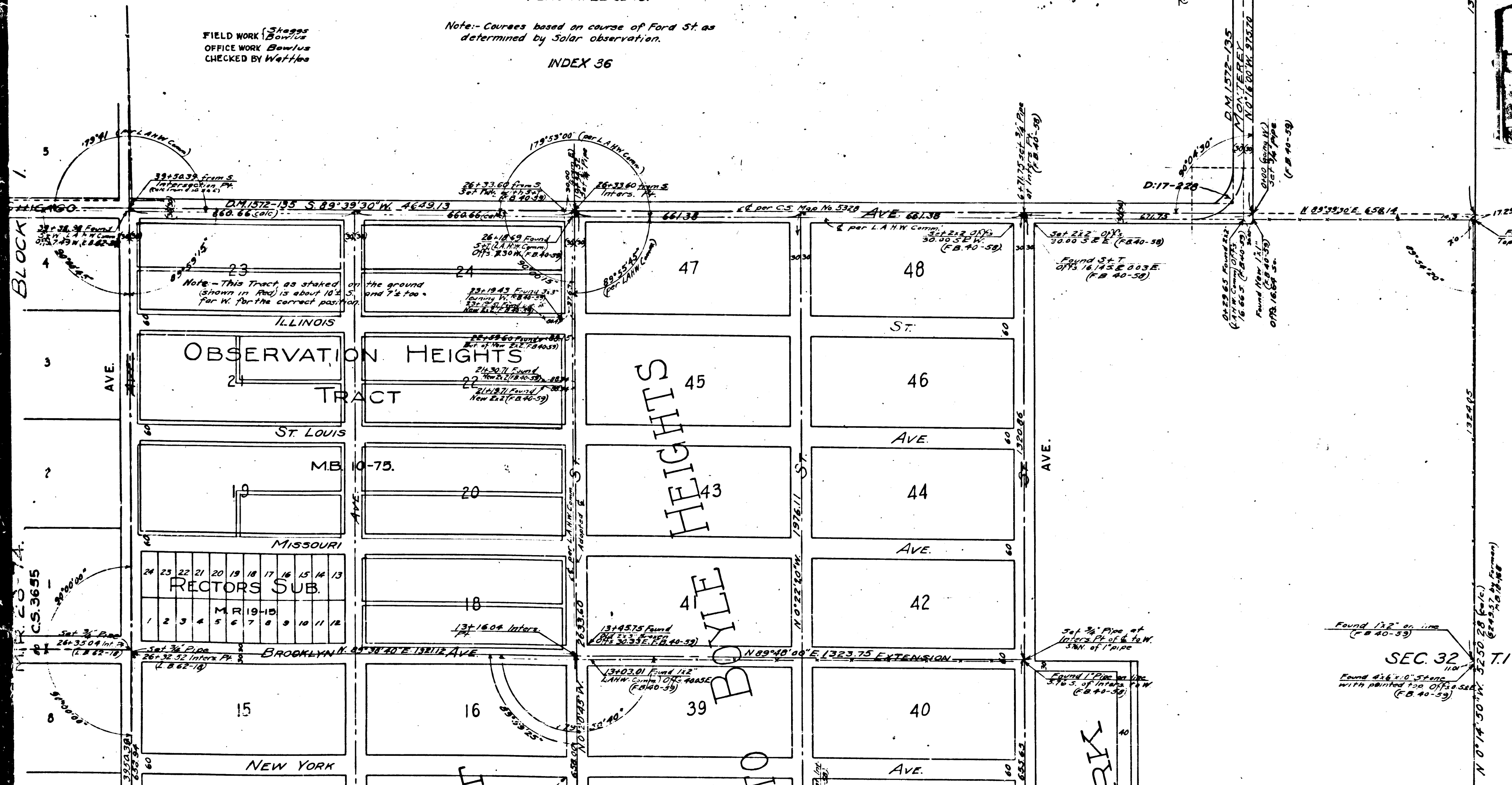
FIELD WORK (Steggs)
 OFFICE WORK (Bowlus)
 CHECKED BY (Wet/lee)

Note: Courses based on course of Ford St. as determined by Solar observation.

INDEX 36



CS 3665
 A2 OF B2

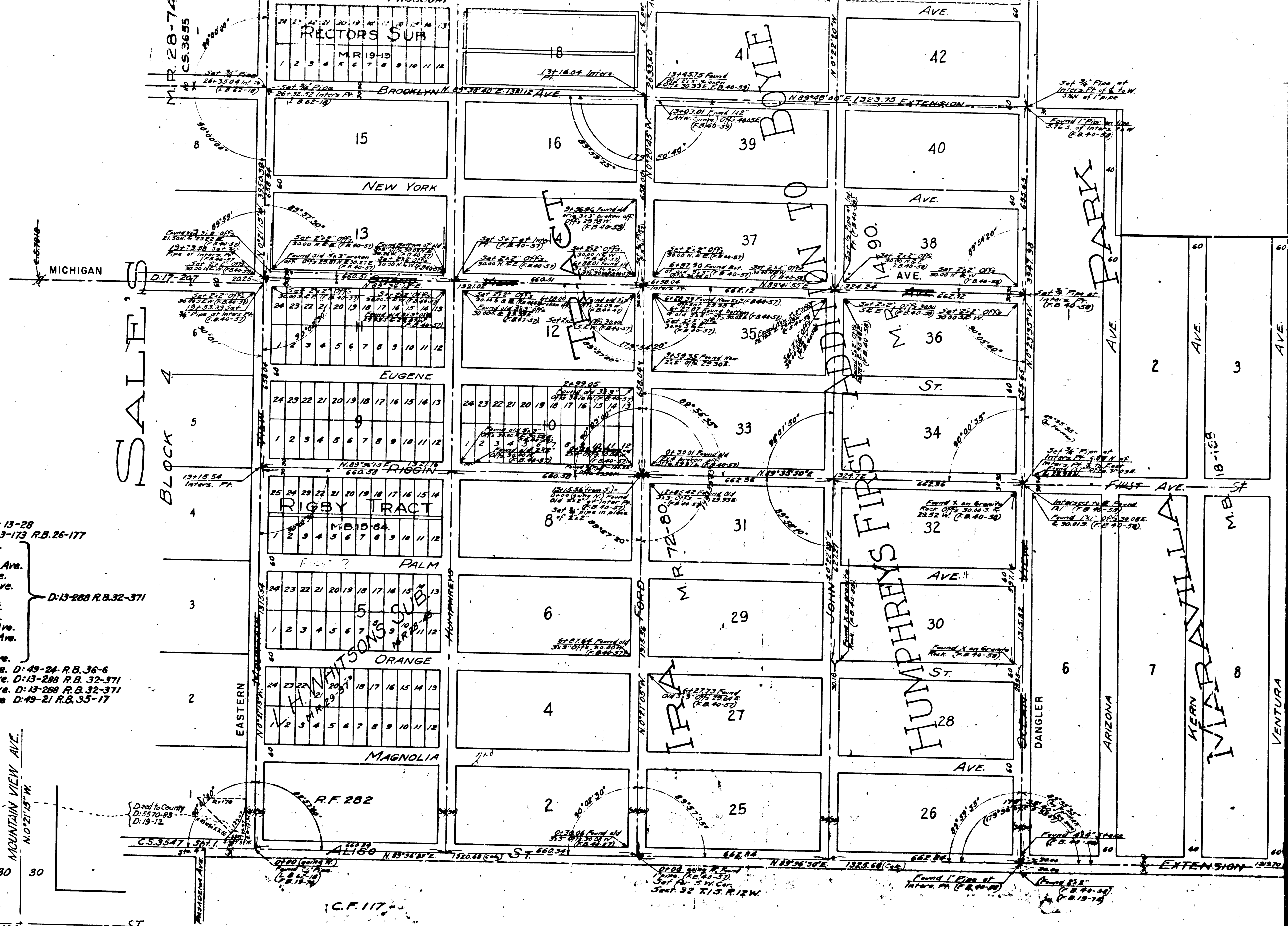


RANCHO

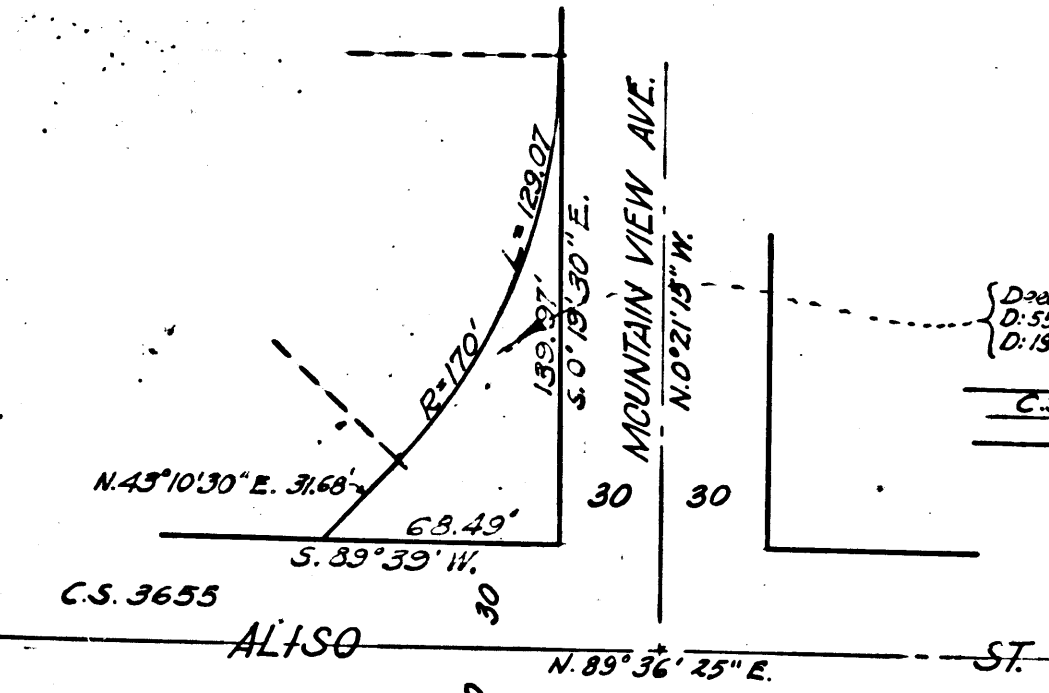
D.M. 759-21, 22 M.R. 5-549.

SEC. 32 T.1S. R.12W.

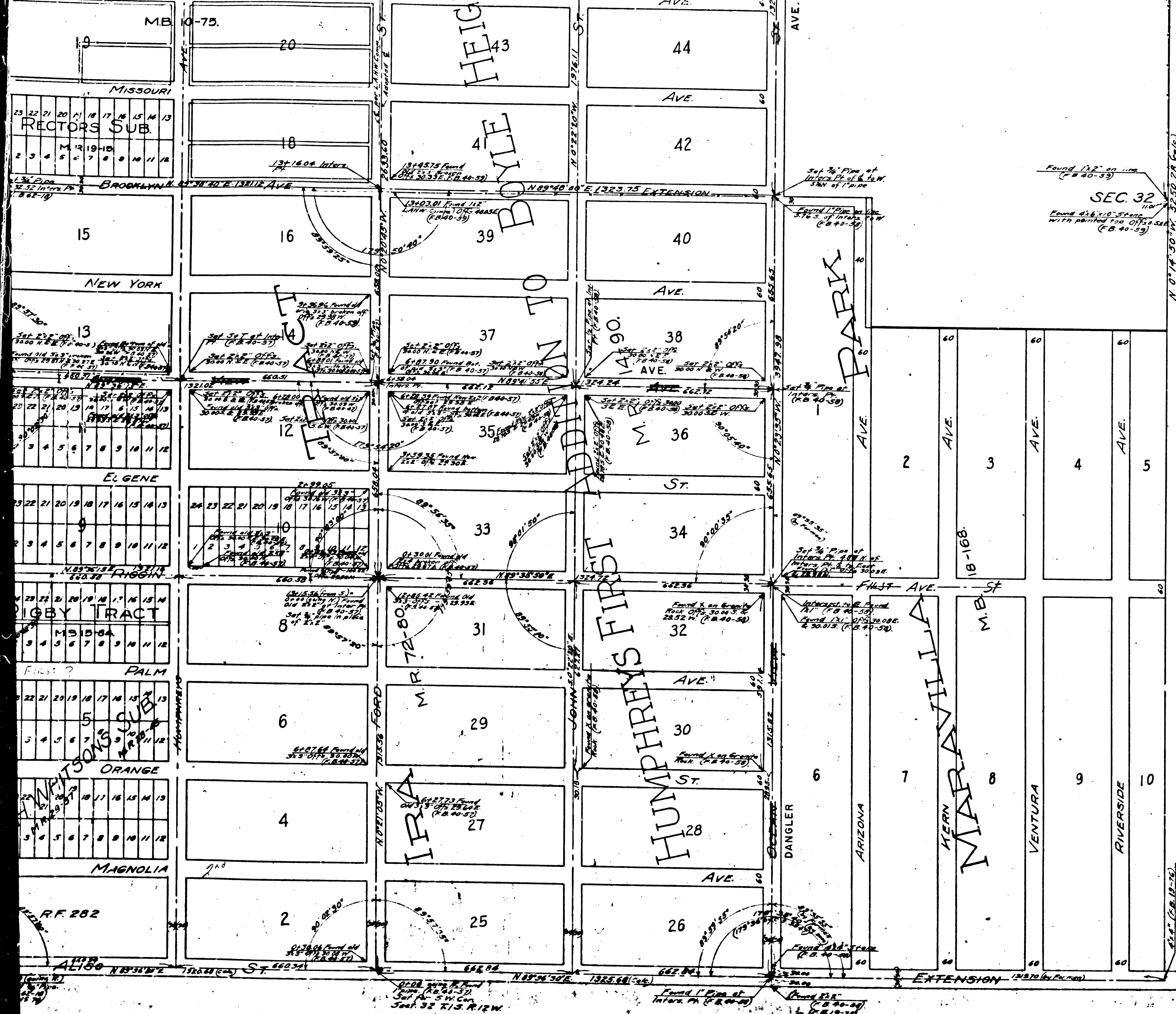
SEC. 31 T.15. R.12W.



- Aliso St. Extension changed to Third St. D:13-28
 Magnolia St. D:13-173 R.B. 26-177
 Mountain View Ave. D:13-288 R.B. 32-371
 Ford St.
 John St.
 Ocean View St.
 Chicago Ave.
 Illinois St.
 St. Louis Ave.
 Missouri Ave.
 Brooklyn Av. Ext.
 Grand View Ave.
 Palm Ave.
 Orange St.
 Douglas Ave.
 Ventura Ave.
 Riverside Ave.
 Ballinger Ave.
- 2nd St. D:13-173 R.B. 26-177
 - Eastern Ave.
 - Ford Blvd.
 - McDonnell Ave.
 - Douglas Ave.
 - Ballinger Ave.
 - Fisher St.
 - Hammel St.
 - Dozier Ave.
 - Brooklyn Ave.
 - Michigan Ave.
 - First St.
 - Gleason Ave.
 - Dangler Ave. D:49-24 R.B. 36-6
 - Medina Ave. D:13-288 R.B. 32-371
 - Fetterly Ave. D:13-288 R.B. 32-371
 - Floral Drive D:49-21 R.B. 35-17



CS 3665
 B1 OF B2



N 0 14 50 W 32.50' (C.B. 40-59)
 (C.B. 40-59)
 (C.B. 40-59)

FRANCIS
 REPETTO

D.M. 759-21, 22 M.R. 5-549.

CS 3665
 B2 OF B2

Note: This Plat was reproduced from an old original tracing Dec. 1956. The original tracing has been discarded.
 Retouched, May, 1957 by R.J. Black