

CS 3667
 A1 OF A3

MAP
 OF PORTION OF
 LAUREL CANYON ROAD
 and
 LOOKOUT MOUNTAIN ROAD
 IN
 Sec. 5 T. 1 S. R. 14 W.

Surveyed May 1913 I. B. Noble, County Surveyor.

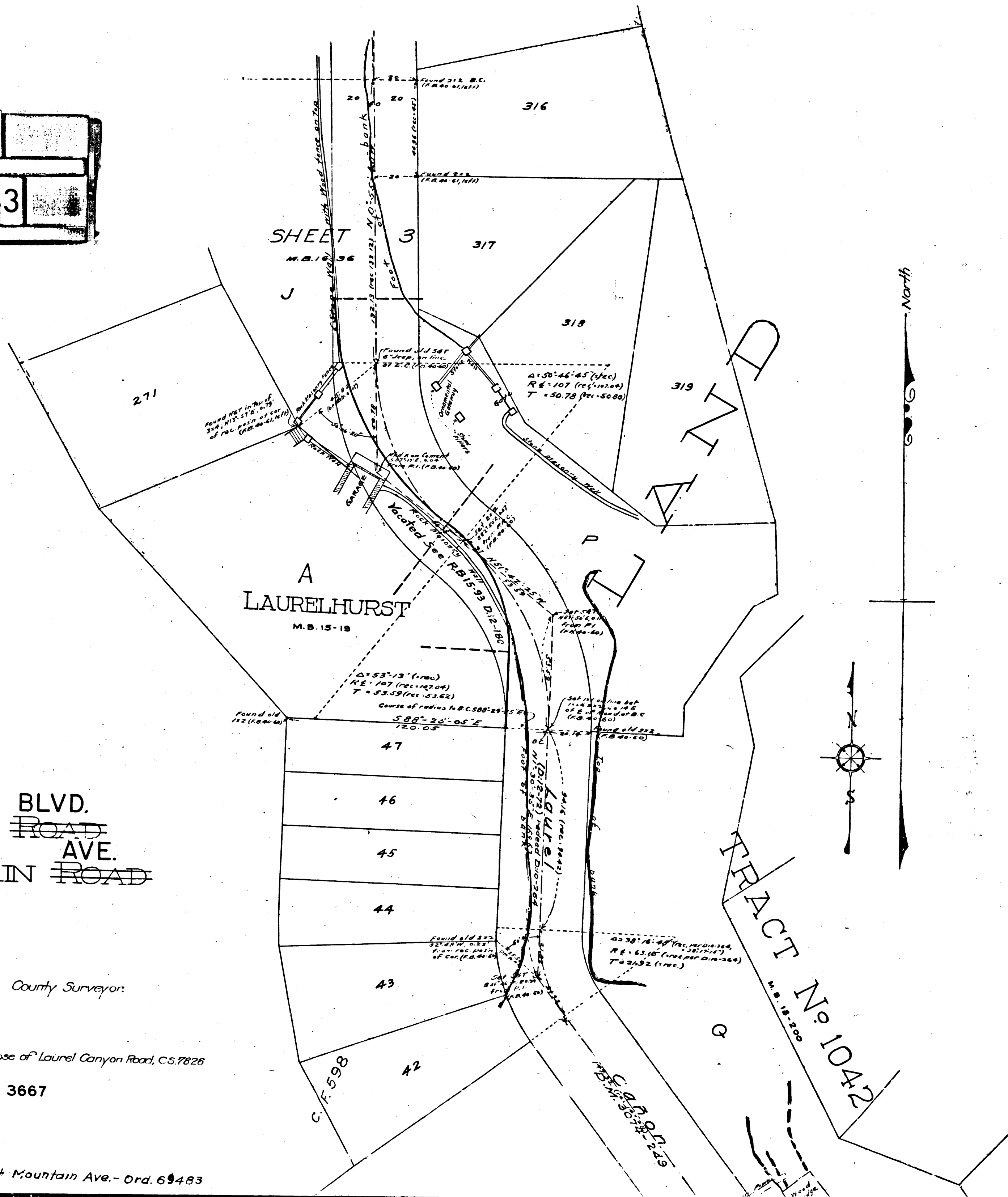
Scale 1 in. = 30 ft.
 F.B. 10-60.

Note. Bearings based on those of Laurel Canyon Road, C.S. 7826

COUNTY SURVEYORS MAP NO 3667

Barrus
 Welch
 Barrus

Lookout Mountain Rd. chg. to Lookout Mountain Ave. - Ord. 69483



Scale 1 in = 30 ft
F.B. 10-60.

Note: Bearings based on those of Laurel Canyon Road, C.S. 7826

COUNTY SURVEYORS MAP NO 3667

Banlus
Wattles
Banlus

Lookout Mountain Rd. chg. to Lookout Mountain Ave. - Ord. 69483

I.M. 22-C-1

SHEET 1
M.B. 12-172

SHEET 2
M.B. 13-194, 195

SHEET 2
M.B. 13-194, 195

SHEET 2
M.B. 13-194, 195

SHEET 1
M.B. 10-181

CS 3667

A 2 OF A 3

GALEON

BUSH

MERRYWOOD

No 1042

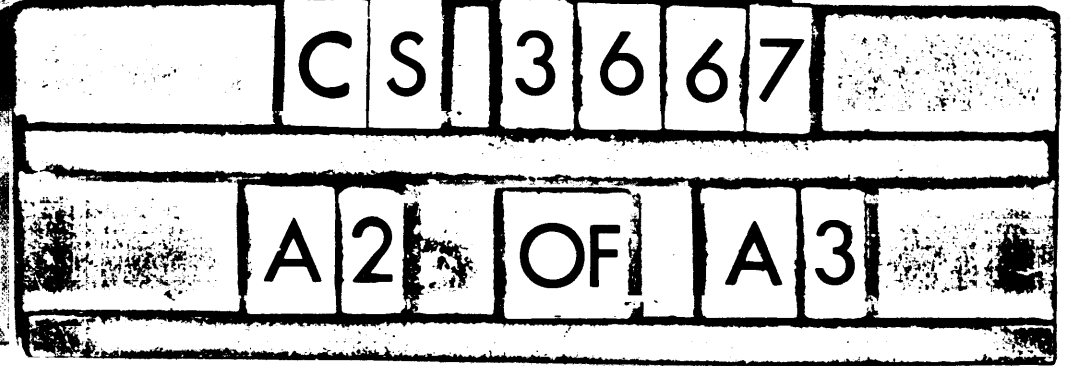
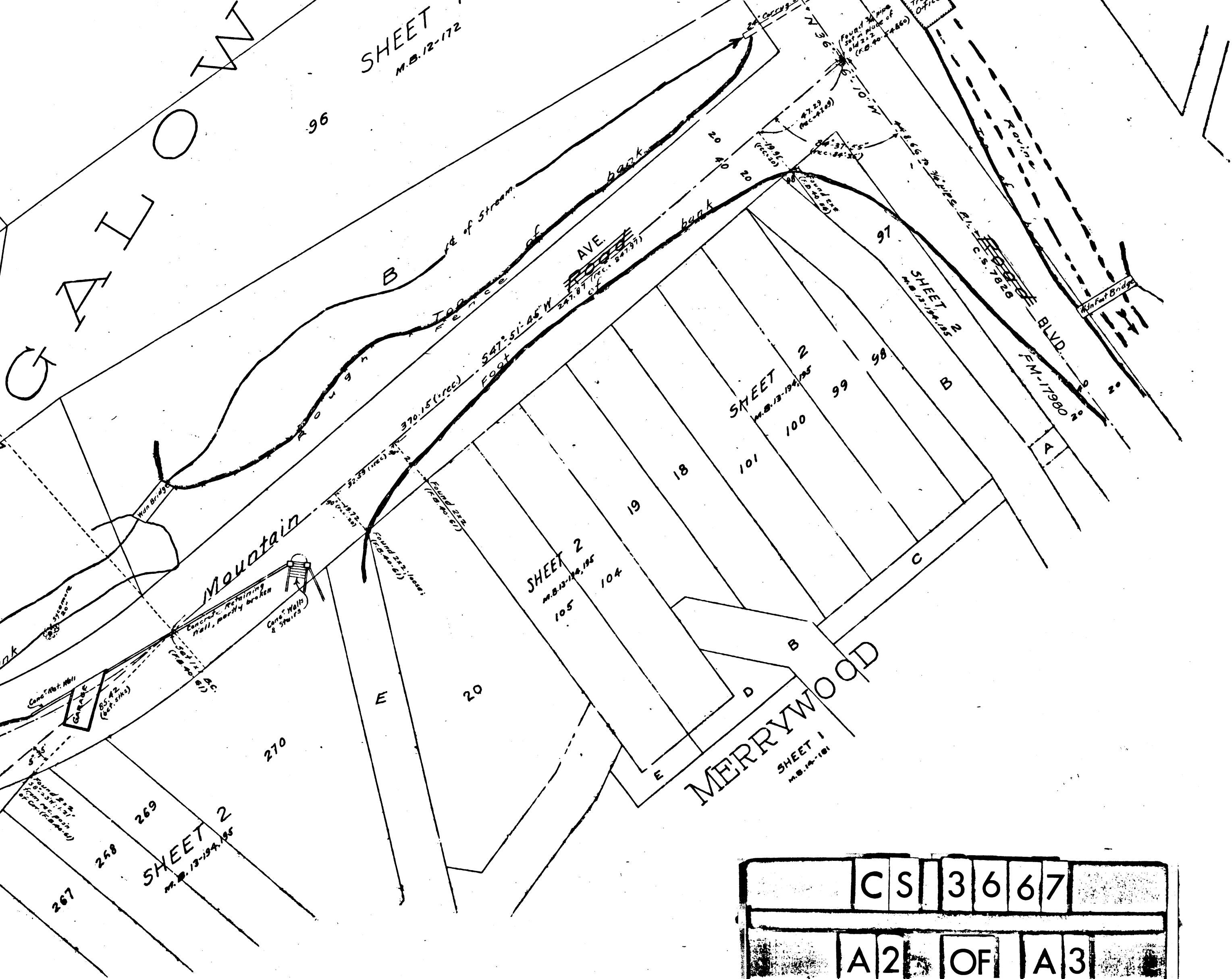
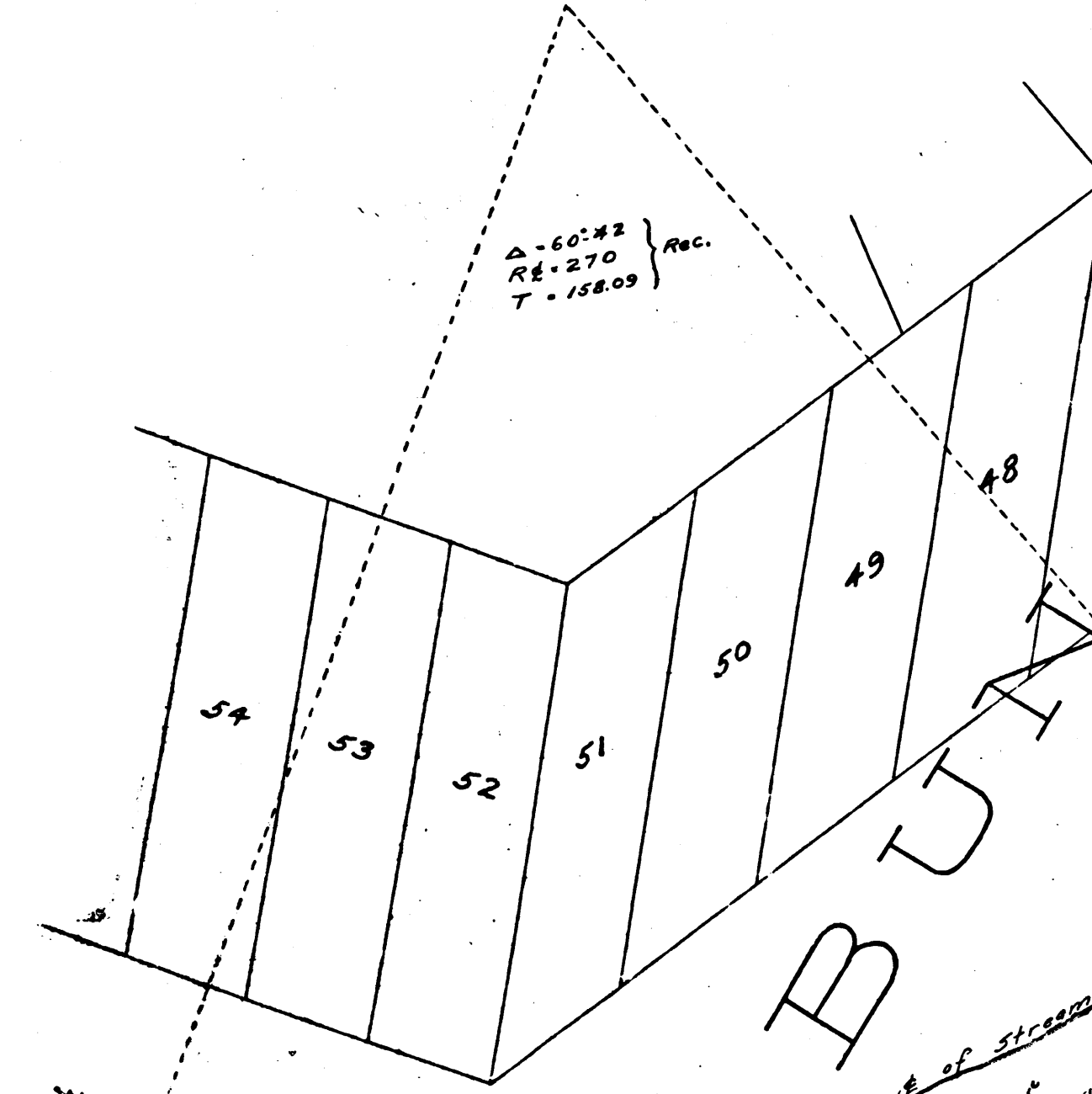
C.F. 598

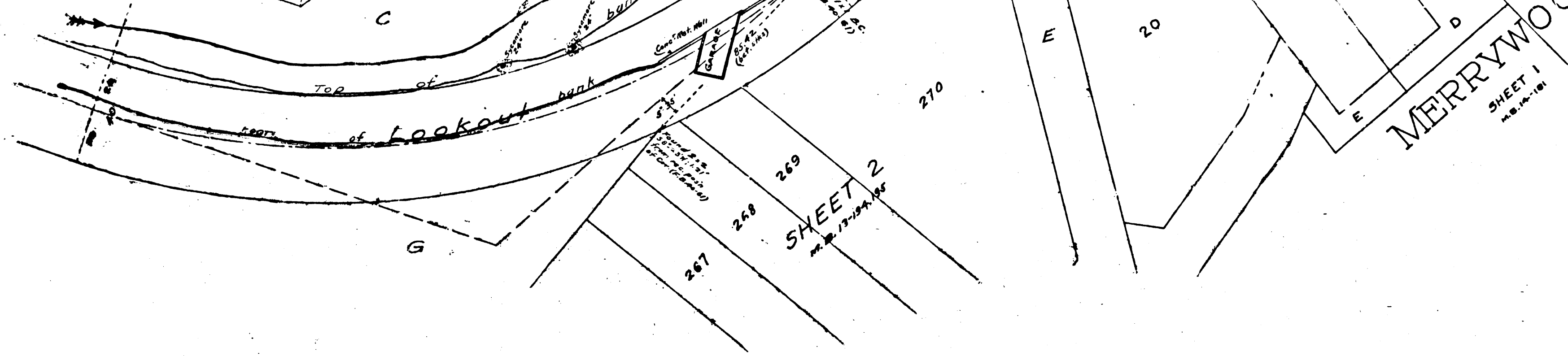
A-60:42
R-270
T-158.09

Mountain

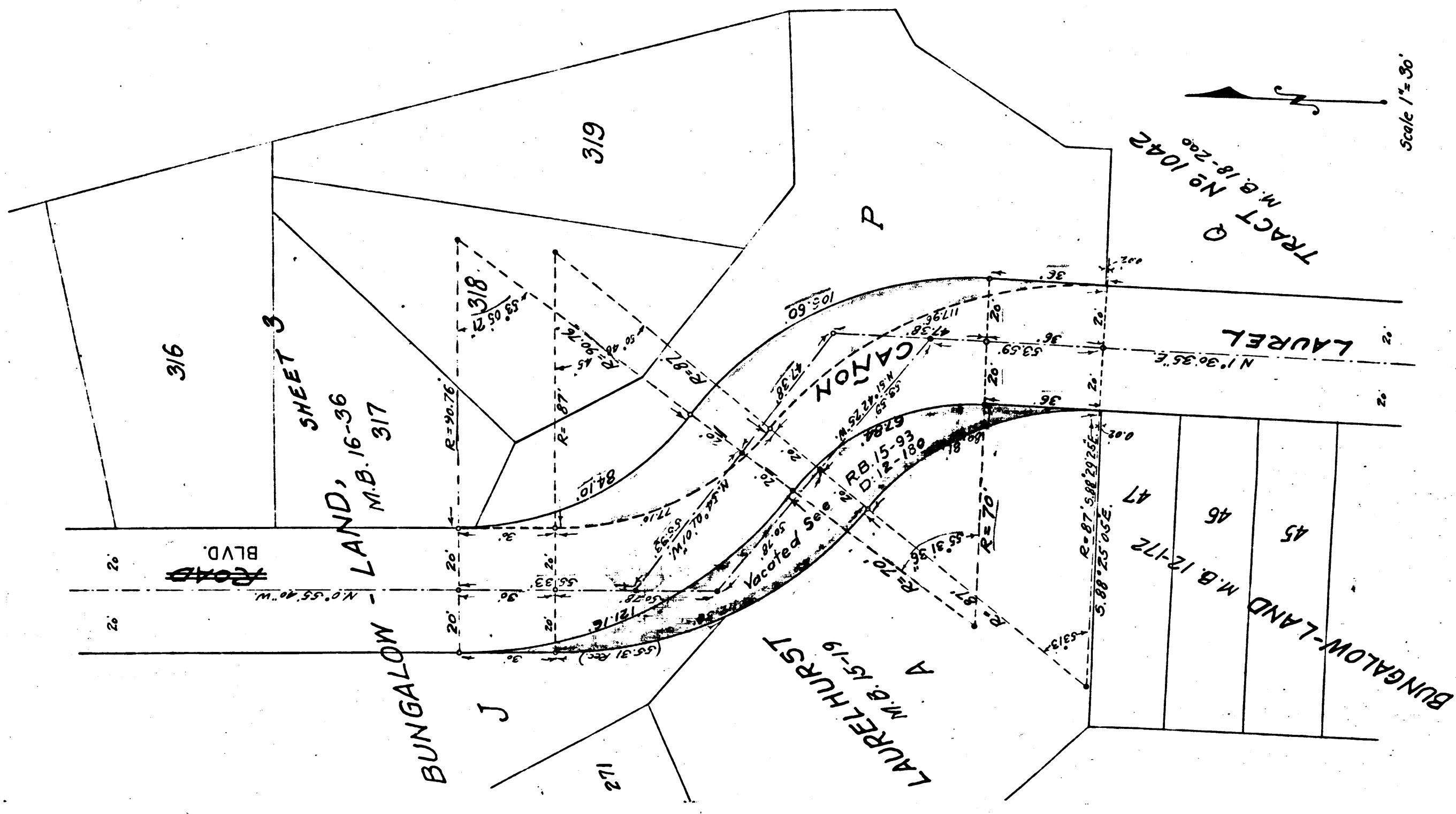
AVE.

BLVD.





CS 3667
 A3 OF A3



Note - Portion to be vacated for street colored red.
 Portion to be vacated colored yellow.