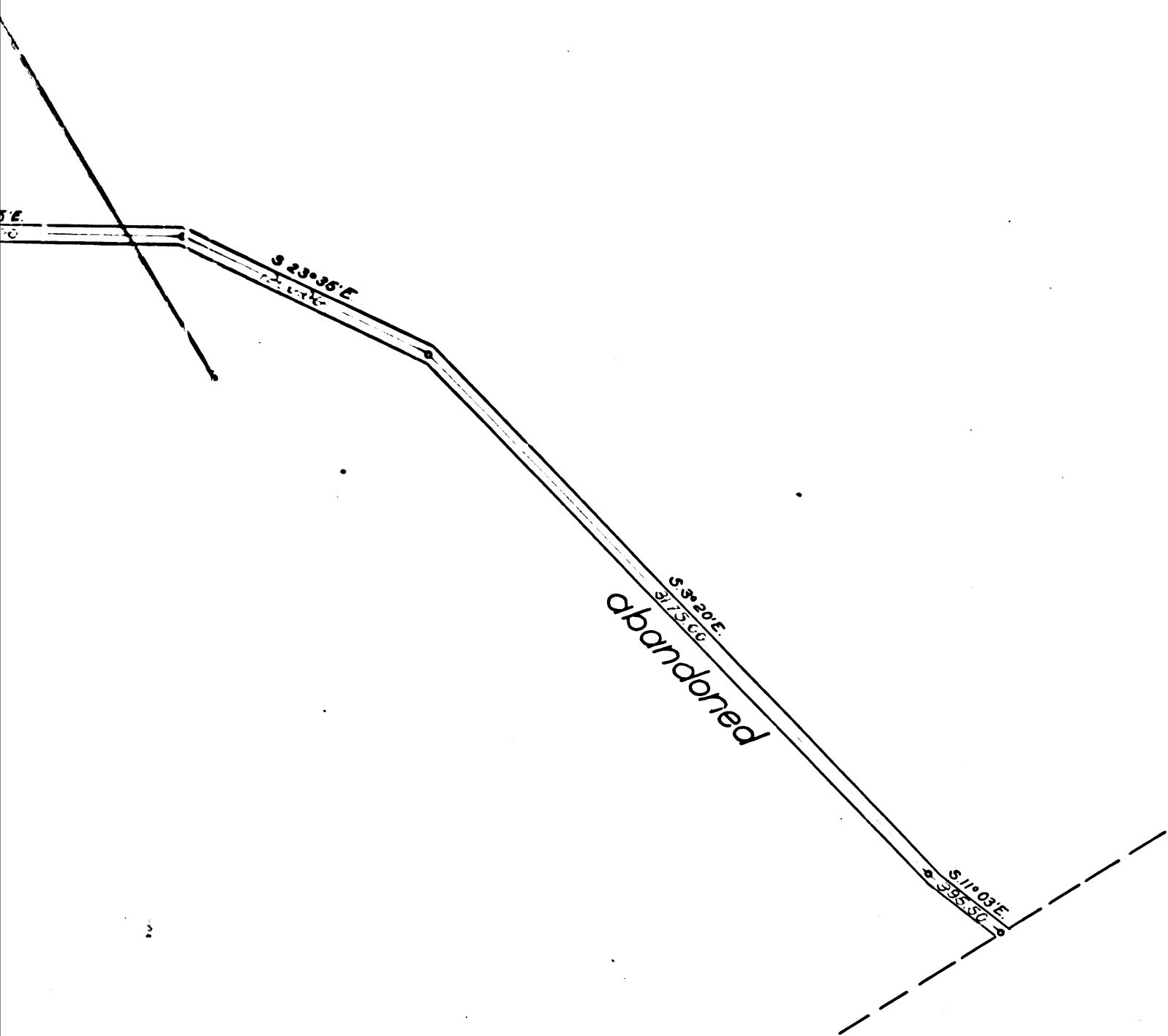


arter



Map of the  
*San Fernando & Tunnel Road*

As Surveyed under Instructions from  
 Honorable Board of Supervisors  
 in March 1896, E.T. Wright Co. Sur.  
 by W.B. Nicholson, Deputy  
 SCALE: 1" = 500' | Road 50 ft. wide, N.B. 5-44-48  
 COUNTY SURVEYORS MAP NO. 4101  
 (Formerly C. S. Map No. 1001)

INDEX 53, 56

San Fernando & Tunnel Road changed to San Fernando Blv'd Ord 35314

Retraced from the cloth-mounted eggshell  
 original map which has been discarded.

Traced by T. Kardos - Aug., 1957  
 Checked by R.J.B.

CS	4	1	0	1
A	2	OF	A	2