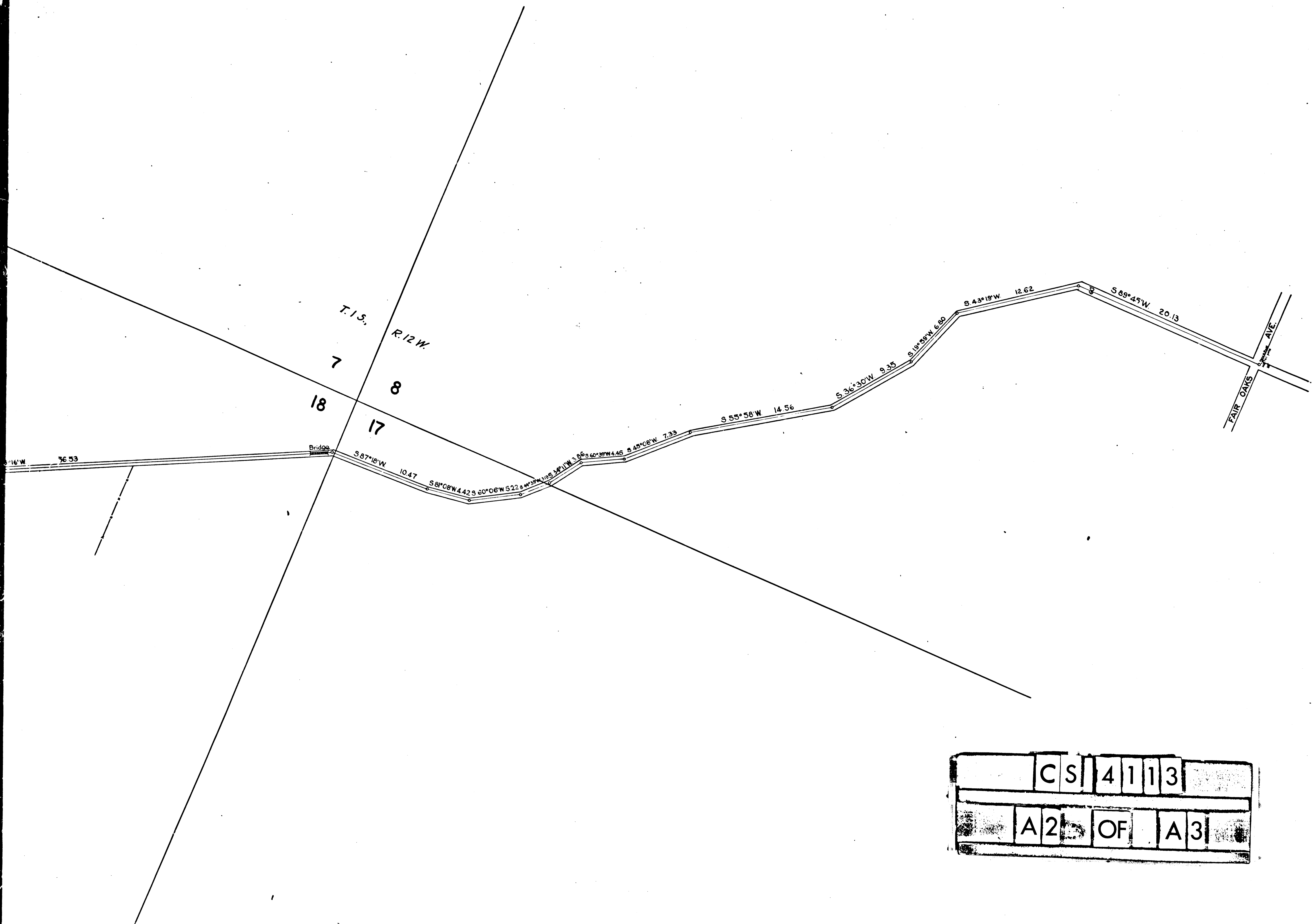
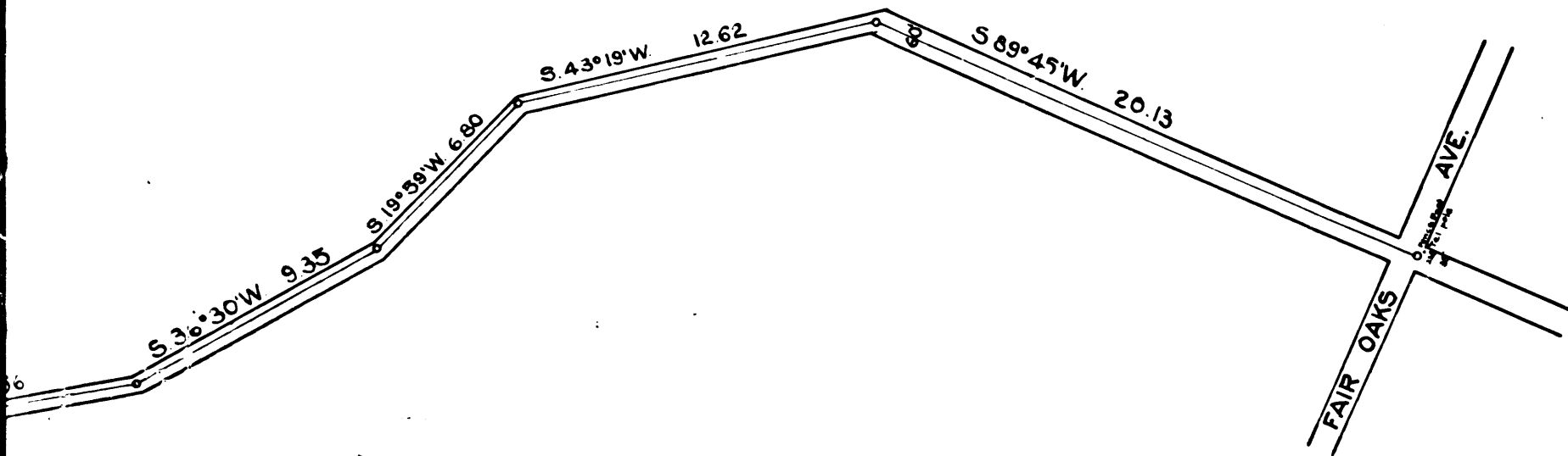


CS	4	1	1	3
A	1	OF	A	3



	C	S	4	1	1	3
	A	2	OF	A	3	



HUNTINGTON DRIVE ~~ROSE ROAD~~

from Fair Oaks Ave, South Pasadena to East line Los Angeles City and
 Surveyed by order of the Hon. Board of Supervisors
 by E. T. Wright Co. Sur. Sept. 1896
 SCALE: 5 Chs = 1"
 N.B. 8-70
 County Surveyors Map No. 4113

I.M. 8
 D: 1-130
 for vacation of road see M.R. 107-192

NOTE: For width of this road as defined by fences See F.M. 17342

Retraced by T. Kardos, Sept. 1957
 Checked by J. Black

