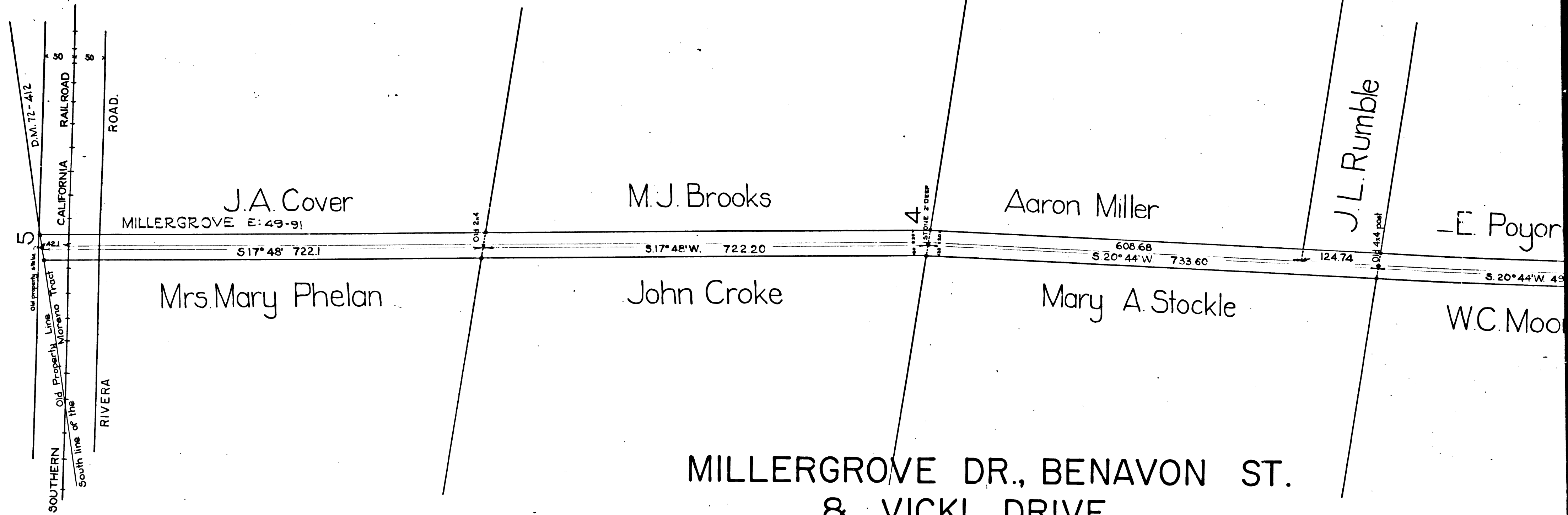


F. Bushard

See C.S. 7626, C.S. 7692, F.M. 13418



MILLERGROVE DR., BENA VON ST.  
 & VICKI DRIVE  
~~Rivera & Los Nietos Road~~

As surveyed under instructions of the

Honorable Board of Supervisors

June 1897 by E.T. Wright Co. Sur.

Scale 1" = 100' Road 40 ft. wide  
N.B. 15-32

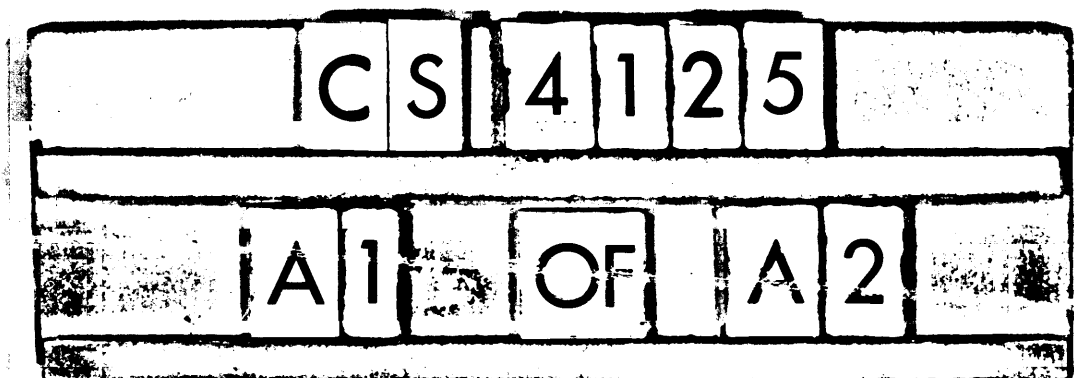
Viewers {  
 E.T. Wright  
 H. Sarrasin  
 H.L. Montgomery

COUNTY SURVEYORS MAP NO. 4125

INDEX 36

For deeds to Road See: D.M. 1216-89, D:2-216  
 " " " " " D.M. 1214-229, D:2-210

Retraced by T. Kardos, Oct. 1957  
 Checked by R. J. B.



ks  
ke

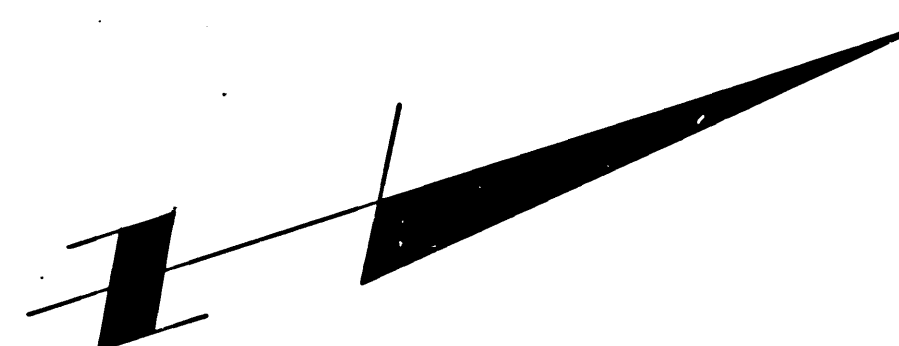
Aaron Miller

J.L. Rumble

E. Poyoreno DR.

Mary A. Stockle

W.C. Moore ST.



LERGROVE DR., BENA VON ST.

& VICKI DRIVE

~~ivera & Los Nietos Road~~

As surveyed under instructions of the

Honorable Board of Supervisors

June 1897 by E.T. Wright Co. Sur.

Scale 1" = 100' Road 40 ft. wide  
NB. 15-32

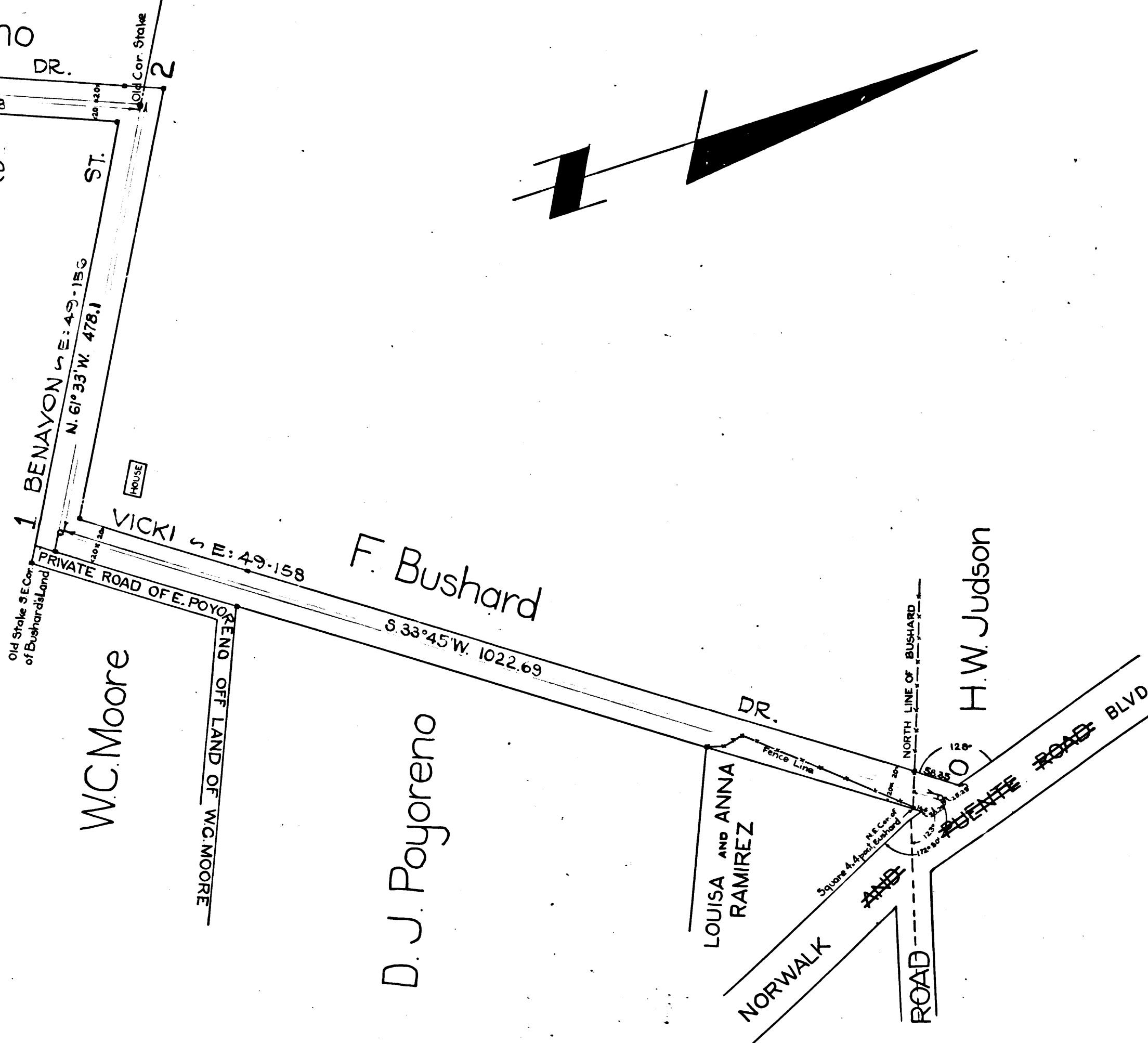
Viewers { E.T. Wright  
H. Sarrasin  
H.L. Montgomery

COUNTY SURVEYORS MAP NO. 4125

INDEX 36

For deeds to Road See: D.M. 1216-89, D:2-216  
D.M. 1214-229, D:2-210

Retraced by T. Kardos, Oct. 1957  
Checked by R.J.B.



CS 4125  
A 2 OF A 2