

CS	4	1	2	7
A	1	OF	B	2

MAP

Showing the Official Bed of the SAN GABRIEL RIVER

as laid out in accordance with the instructions from the
Honorable Board of Supervisors

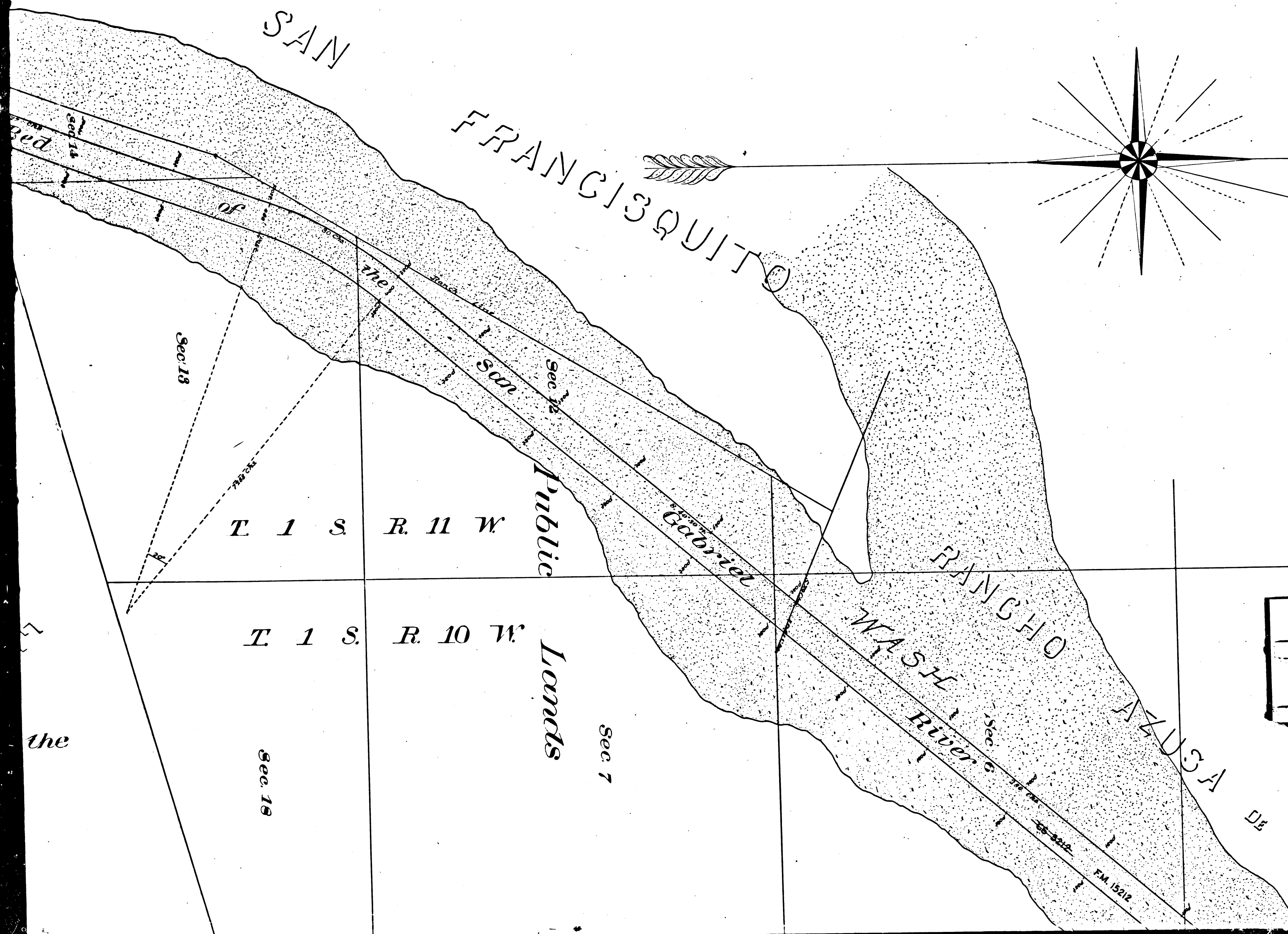
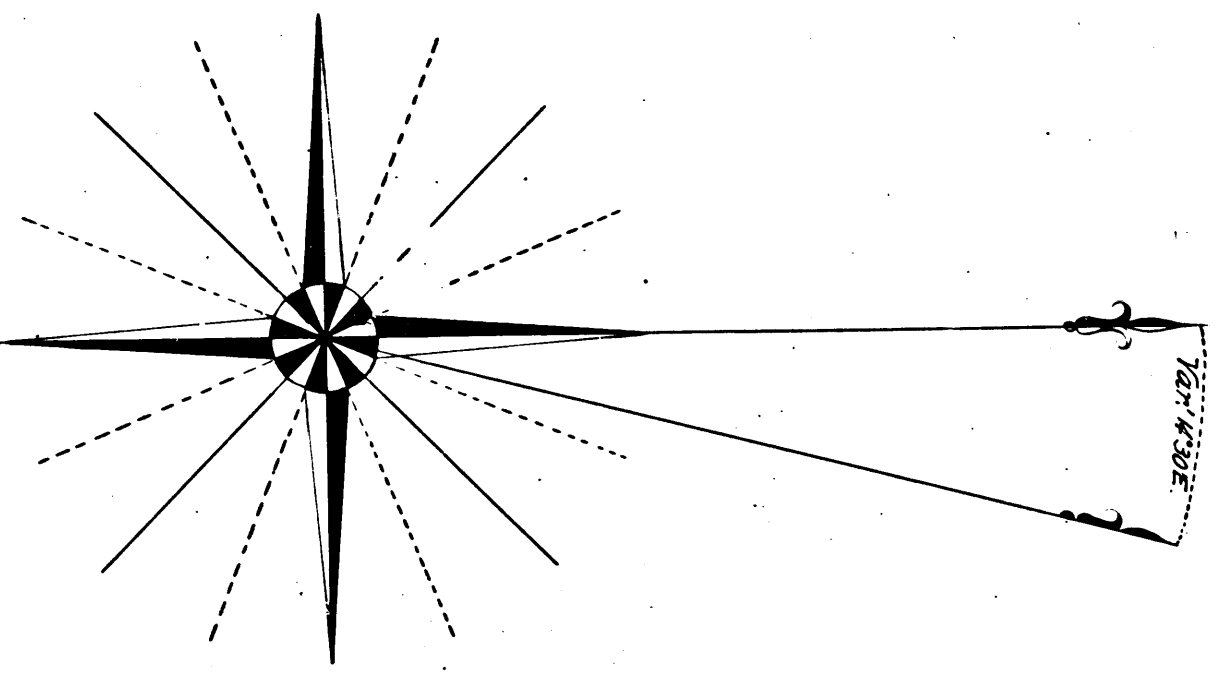
passed Aug. 22nd 1892.

Geo. H. Peck

RANCHO

SAN

FRANCISQUITO



T 1 S R 11 W

T 1 S R 10 W

Public Lands

CS	4	1	2	7
A	2	OF	B	2

DUARTE

ANGHO

LA

PUENTE

13 QUIT

MAP

Showing the Official Bed of the

SAN GABRIEL RIVER

*as laid out in accordance with the instructions from the
Honorable Board of Supervisors*

passed Aug. 22nd 1892.

*Geo. H. Peck
J. Hannon } Newers.
W. R. Dodson }
Harry F. Stafford
County Surveyor*

Scale 800 feet to one inch.

Var 14'30" East.

FOR FIELD NOTES SEE R 5 - PAGES 9 TO 11

COUNTY SURVEYORS MAP NO. 4127
(FORMERLY C. S. MAP NO. 1027)

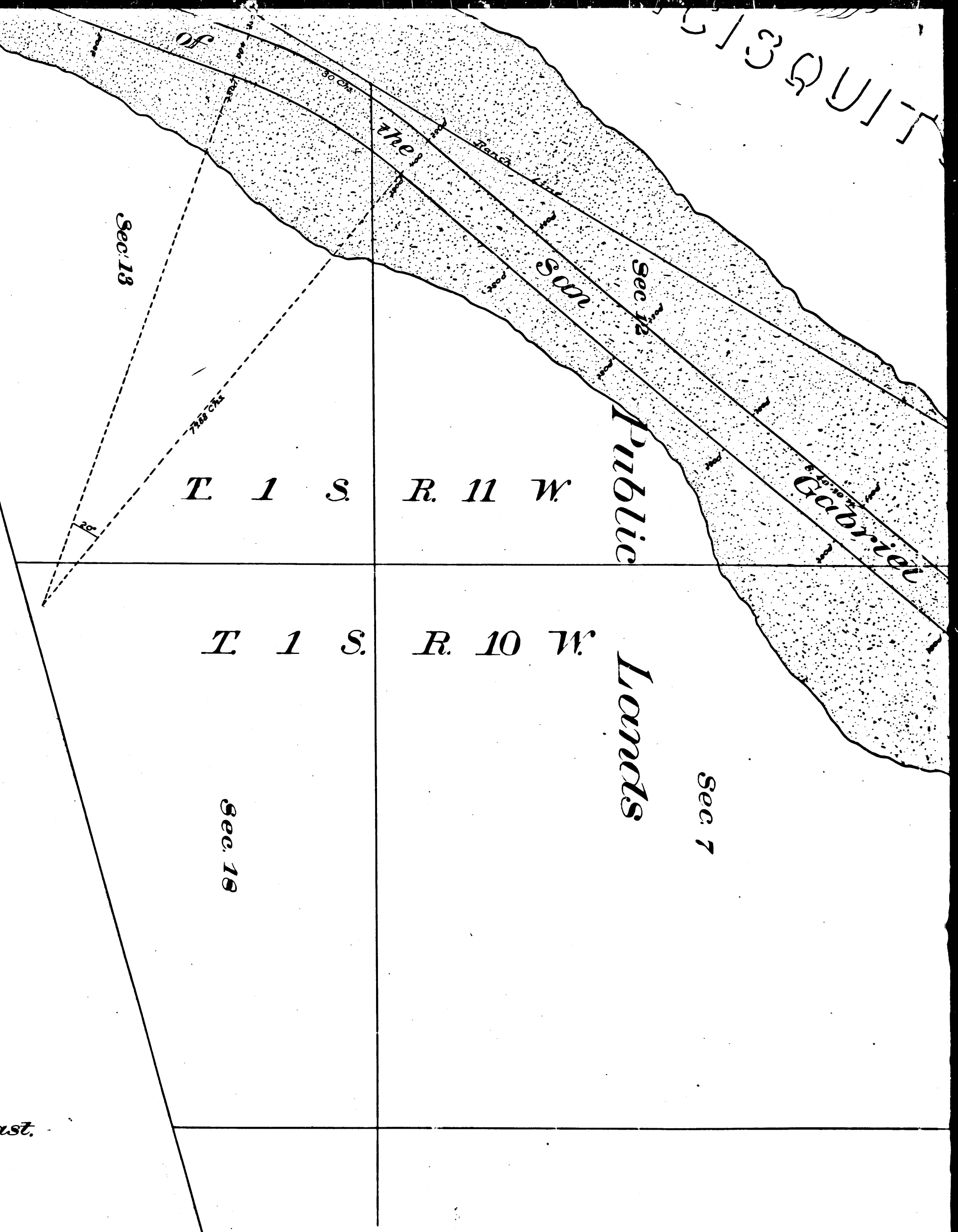
INDEX 46

See - E-17-50

This photact tracing made April, 1958, from the cloth-mounted egg-shell original map which has been discarded.

Retouched by, Franklin Woo, June 1958
Checked by, R.J.B. June 1958

	C	S	4	1	2	7
	B	1	OF	B	2	



Sec. 13

T 1 S R. 11 W

Public Lands

T 1 S R. 10 W

Public Lands

Sec. 19

Sec. 7

Rancho Gabriel

RANCHO WASH AZUSA DE DUARTE

WASH River

FM 15212

FM 15211

Santa Fe Route
California Southern R.R.

THE
R
om the
rs

Var 1430 East.

acing made April, 1958, from the cloth-mounted
map which has been discarded.
Retouched by, Franklin Woo, June 1958
Checked by, R.J.B. June 1958

CS	4	1	2	7
B 2	OF	B 2		