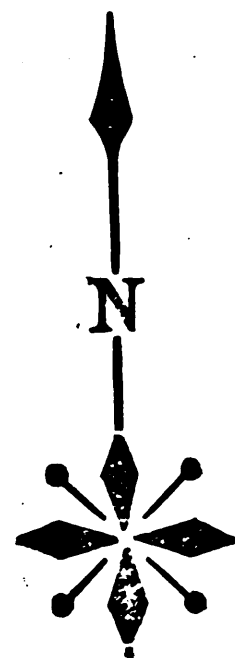


Flagstaff of San Pedro Lumber Co.

N.E. Cor. wharf San Pedro Lumber Co.

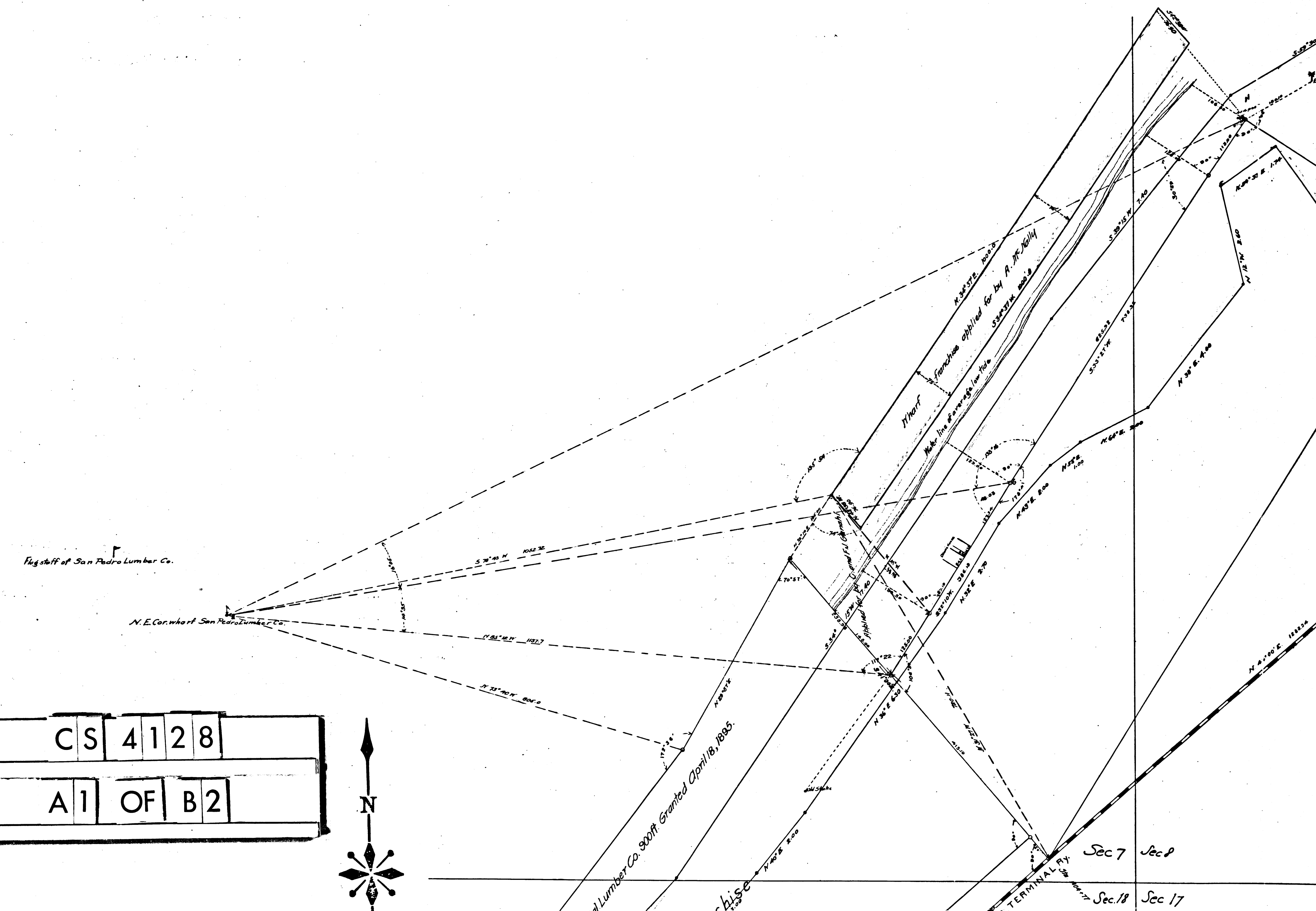
CS	4	1	2	8
A	1	OF	B	2

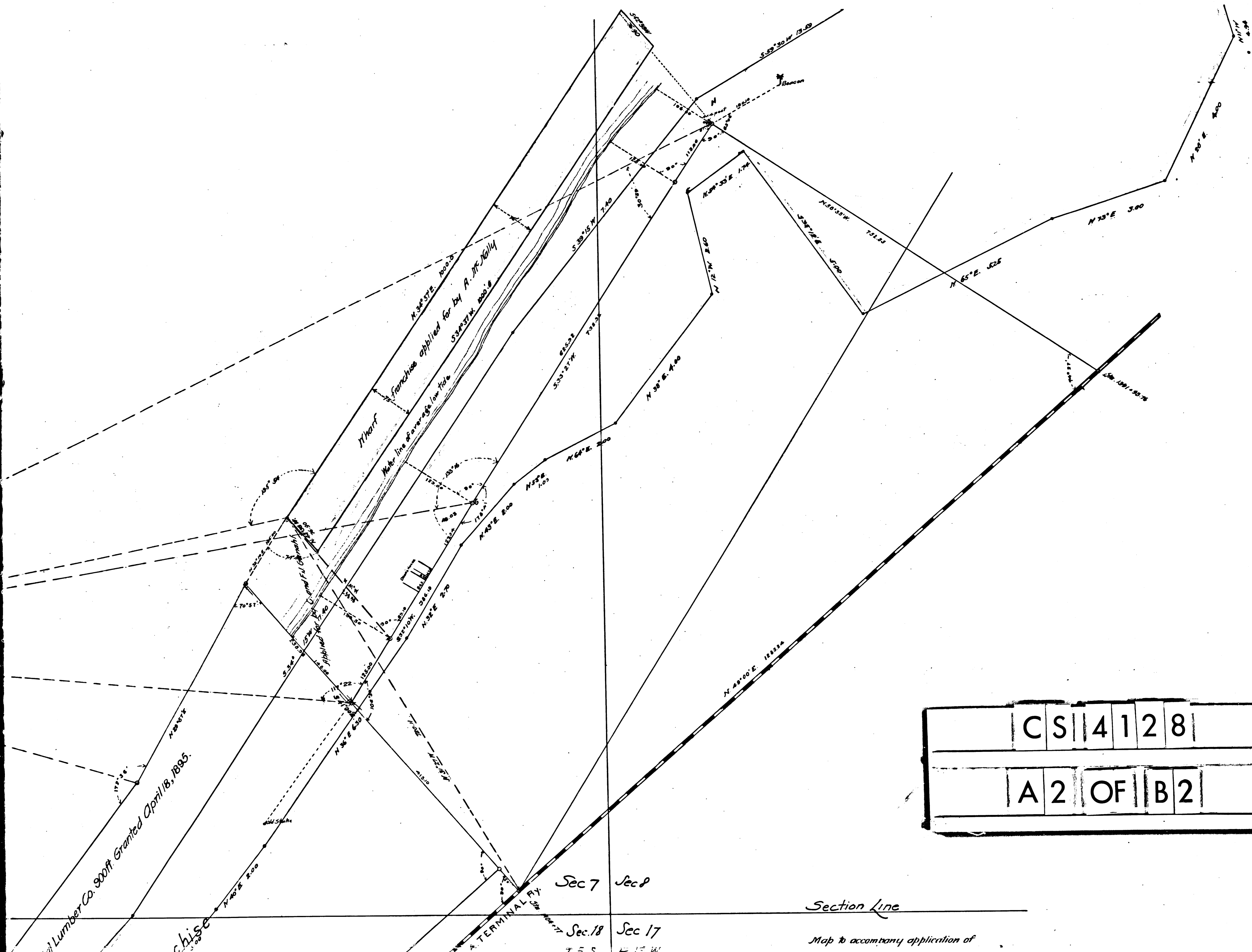


San Pedro Lumber Co. 900ft. Granted April 18, 1885.

Wharf
franchise applied for by A. McNeilly
Main line of wharf for 700 ft
530' 21 1/2"

Sec 7 Sec 8
Sec 17 Sec 18





Lumber Co. 900 ft. Granted April 18, 1895.

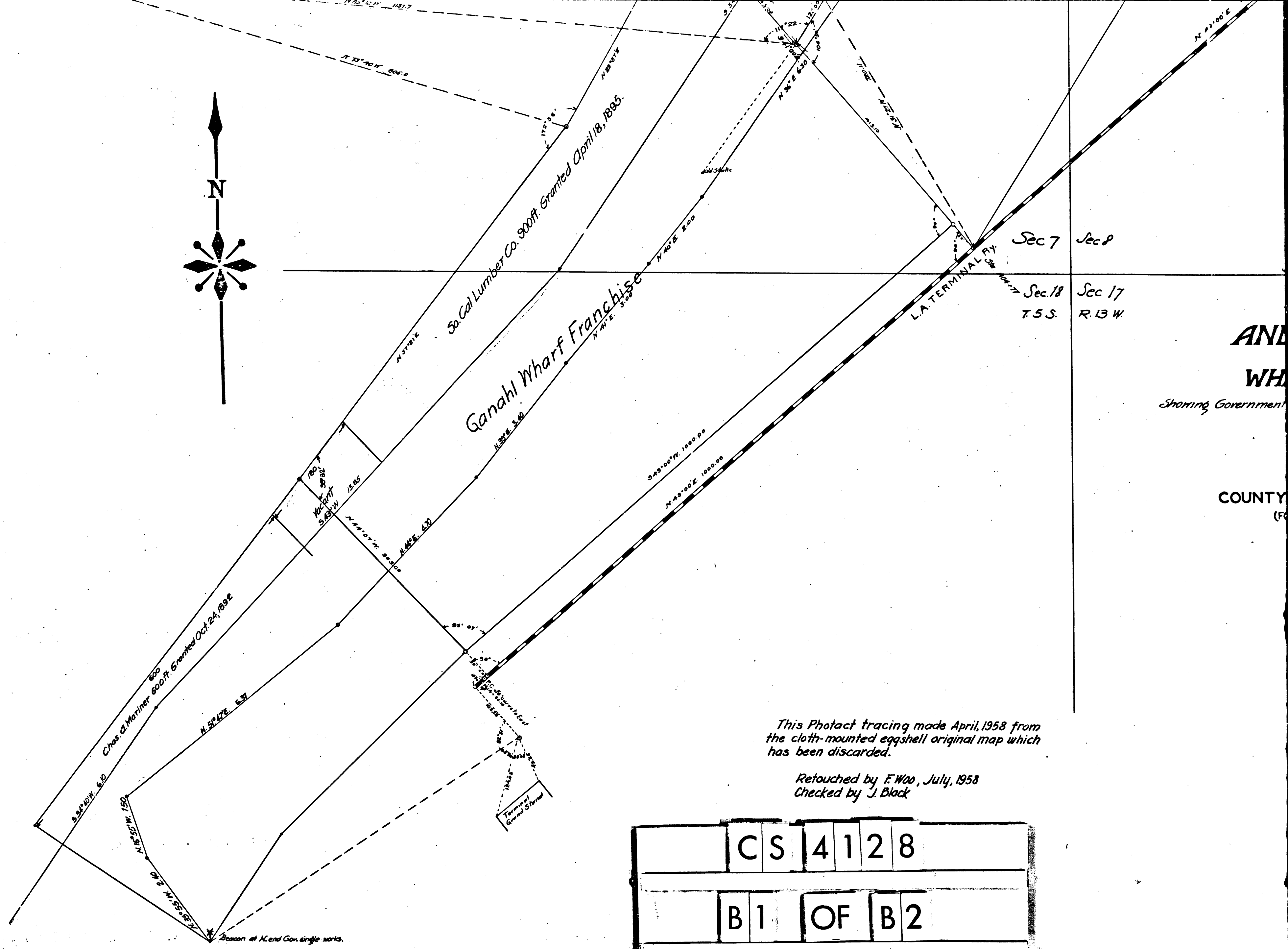
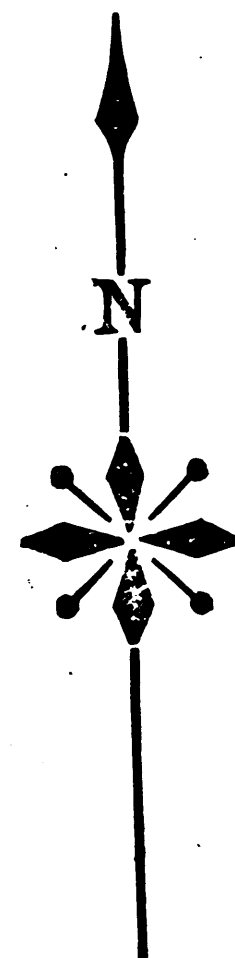
Mortgage
 franchise applied for by A. Mc-Nally
 Mile line of average low tide

Sec 7 Sec 8
 Sec 18 Sec 17
 TERMINAL RY.

Section Line

Map to accompany application of

C	S	4	1	2	8
A	2	OF	B	2	

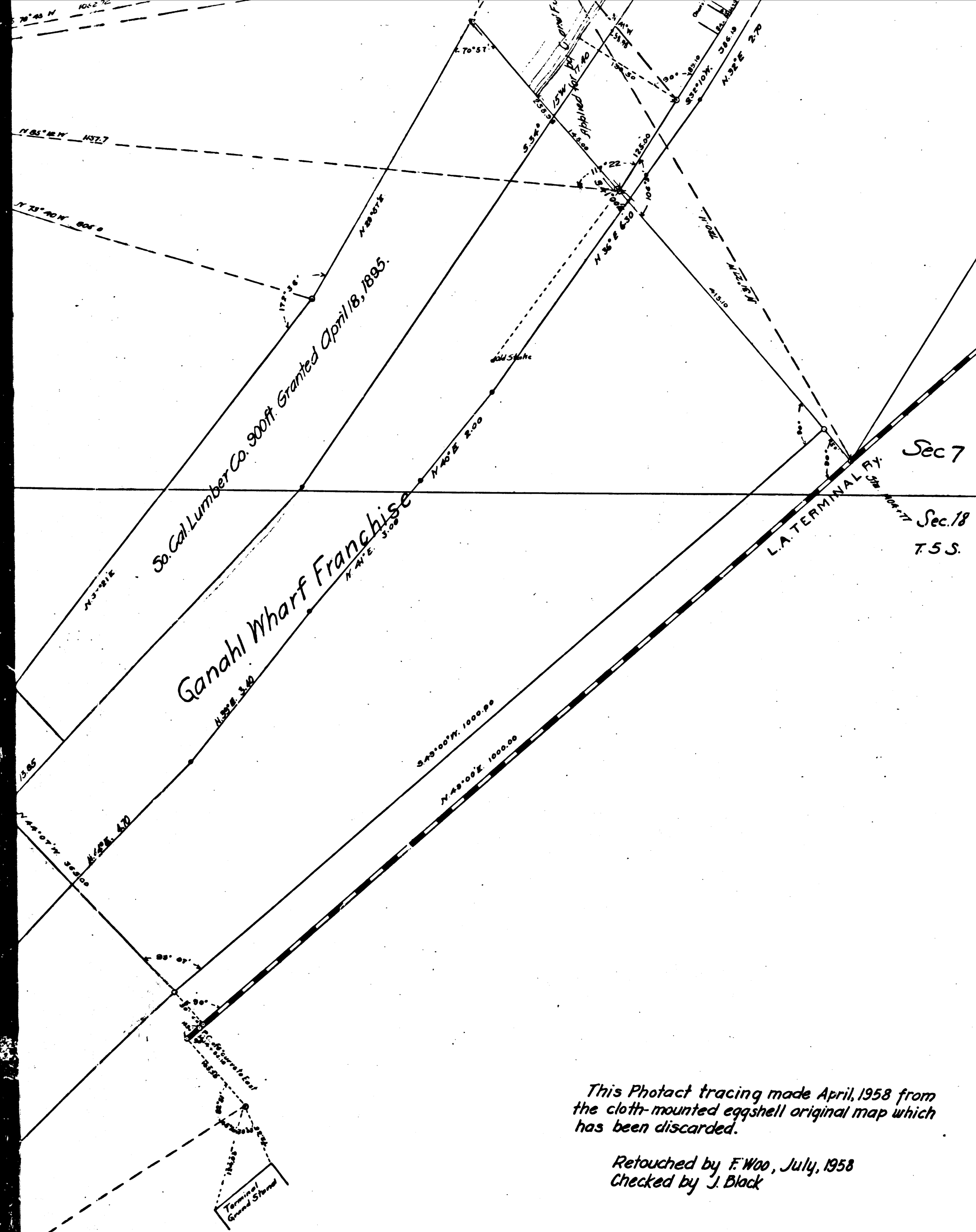


AND
 WH
 Showing Government
 COUNTY
 (F)

This Photact tracing made April, 1958 from the cloth-mounted eggshell original map which has been discarded.

*Retouched by F. Woo, July, 1958
 Checked by J. Black*

	C	S	4	1	2	8
	B	1	OF	B	2	



Map to accompany application of
ANDREW M'NALLY
 for
WHARF FRANCHISE
 Showing Government Harbor Line established by the Secretary of War
 Scale: 100 FT to 1 Inch.
 Located Febry 1895
 by
E. T. Wright
 County Surveyor
COUNTY SURVEYORS MAP NO. 4128
 (FORMERLY C. S. MAP NO. 2266)
 I.M. 29

*This Photact tracing made April, 1958 from
 the cloth-mounted eggshell original map which
 has been discarded.*

*Retouched by F. Woo, July, 1958
 Checked by J. Black*

	C	S	4	1	2	8	
	B	2	OF	B	2		