

MAP

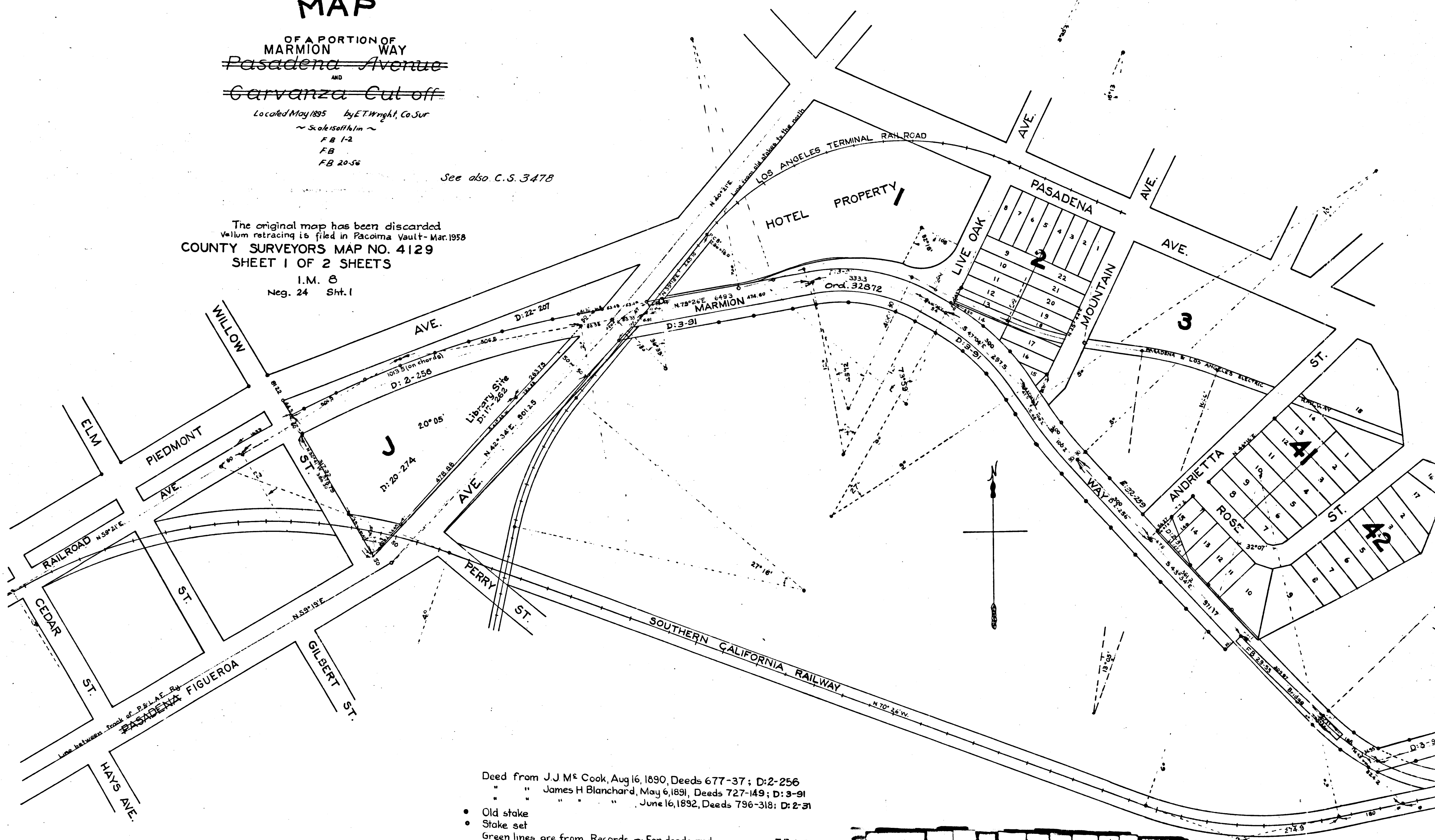
OF A PORTION OF
MARMION WAY
~~Pasadena Avenue~~
AND
~~Garvanza Cut-off~~

Located May 1895 By E.T. Wright, Co. Sur
~ Scale 1/8" = 100' ~
F B 1-2
F B
F B 20-56

See also C.S. 3478

The original map has been discarded
Vellum retracing is filed in Pacoima Vault - Mar. 1958
COUNTY SURVEYORS MAP NO. 4129
SHEET 1 OF 2 SHEETS

I.M. 8
Neg. 24 Sht. 1



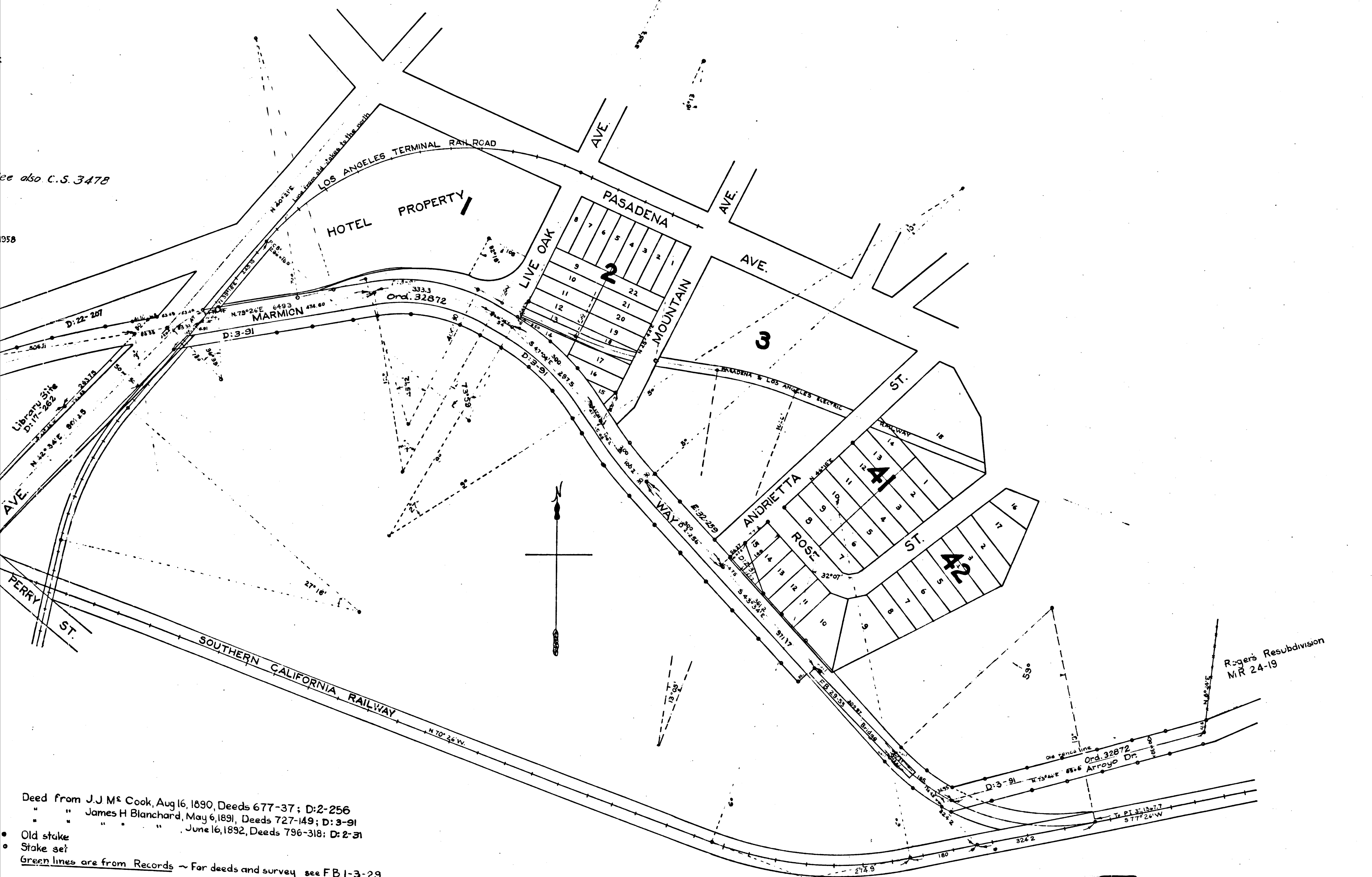
Deed from J.J.M^c Cook, Aug 16, 1890, Deeds 677-37; D:2-256
" " James H Blanchard, May 6, 1891, Deeds 727-149; D: 3-91
" " " " June 16, 1892, Deeds 796-318; D: 2-31

- Old stake
 - Stake set
- Green lines are from Records ~ For deeds and survey see F.B. 1-3-29

C	S	4	1	2	9	-	1
A	1	O	F	A	2		

See also C.S. 3478

358



Deed from J.J. M^s Cook, Aug 16, 1890, Deeds 677-37; D: 2-256
 " " James H Blanchard, May 6, 1891, Deeds 727-149; D: 3-91
 " " " " June 16, 1892, Deeds 796-318; D: 2-31
 • Old stake
 • Stake set
 Green lines are from Records ~ For deeds and survey see FB 1-3-29

	C	S	4	1	2	9	-	1	
	A	2		OF		A	2		

Monte Vista St

PLA
— of proper
Los Angeles
GARVA
L.V. Youngworth,
— Oct. 1903.
SCALE 50 FT = 1"

Piedmont

Ave.

Avenue 61

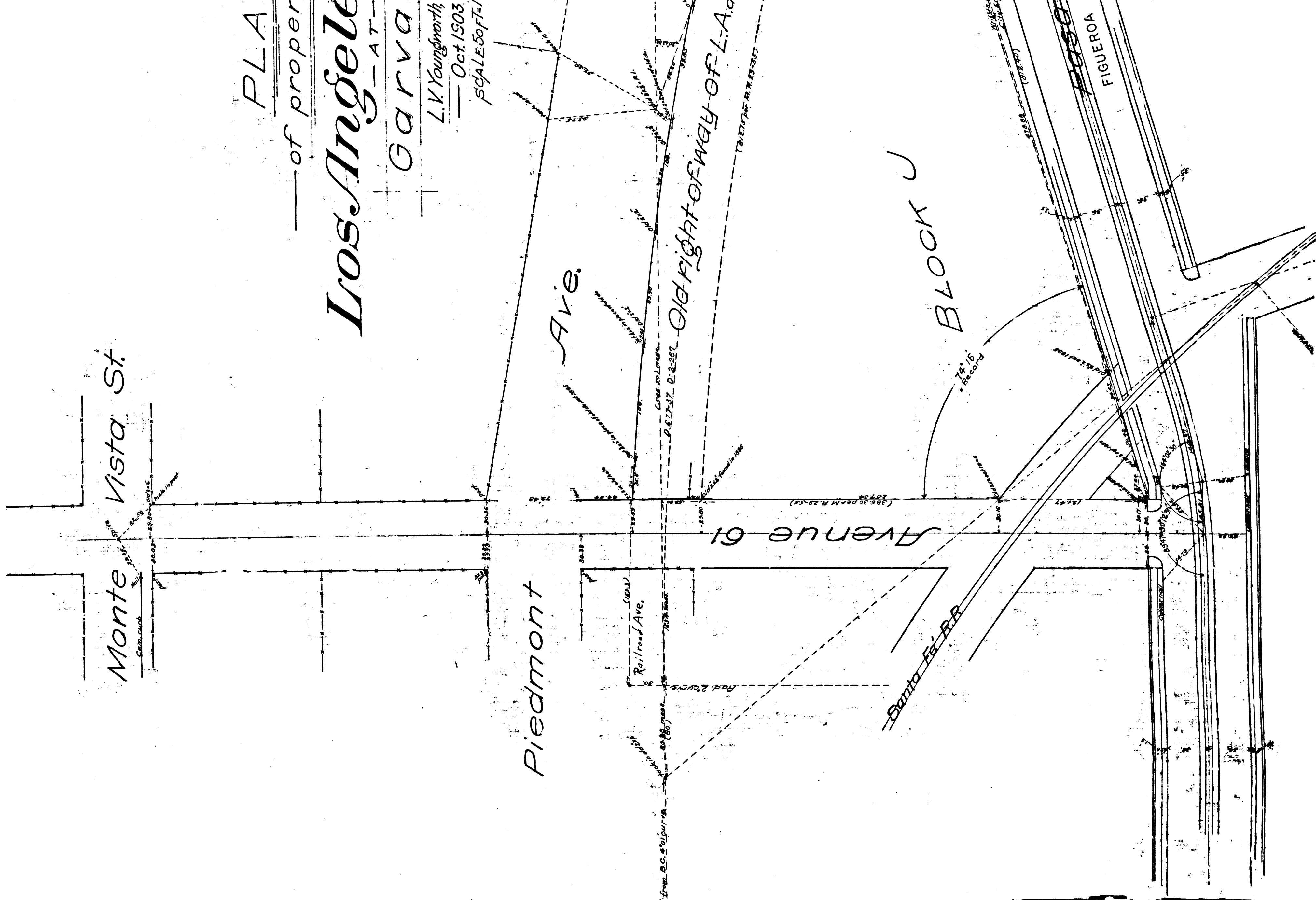
Railroad Ave.

Santa Fe RR

Block J

CS 4129-2
A1 OF A2

FIGURE 0A



PLAT
— of property of —

Los Angeles County

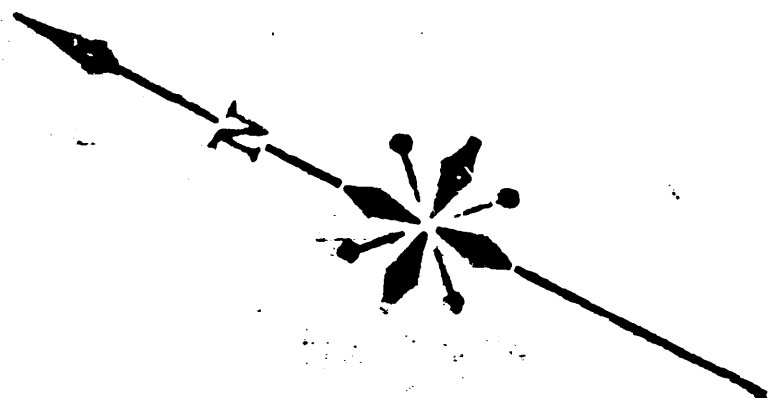
GARVANZA

L.K. Youngworth Co. Sur.

— Oct. 1903 —
SCALE 50 FT. = 1 IN.

F.B. 25-21
COUNTY SURVEYORS MAP NO. 4129
SHEET 2 OF 2 SHEETS
(Formerly C.S. Map No. 2274)
I.M. 6

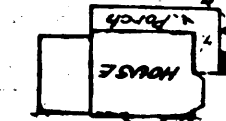
Neg. 24 Sht. 2



ve.

Old Right of Way of L.A. and S.G.K.R.R.
TO BE USED BY THE R.R. CO.

BLOCK J



Left Side
Ditch

FIGUEROA
AVE.

FIGUEROA

CS	4	1	2	9	-	2
A	2	OF	A	2		