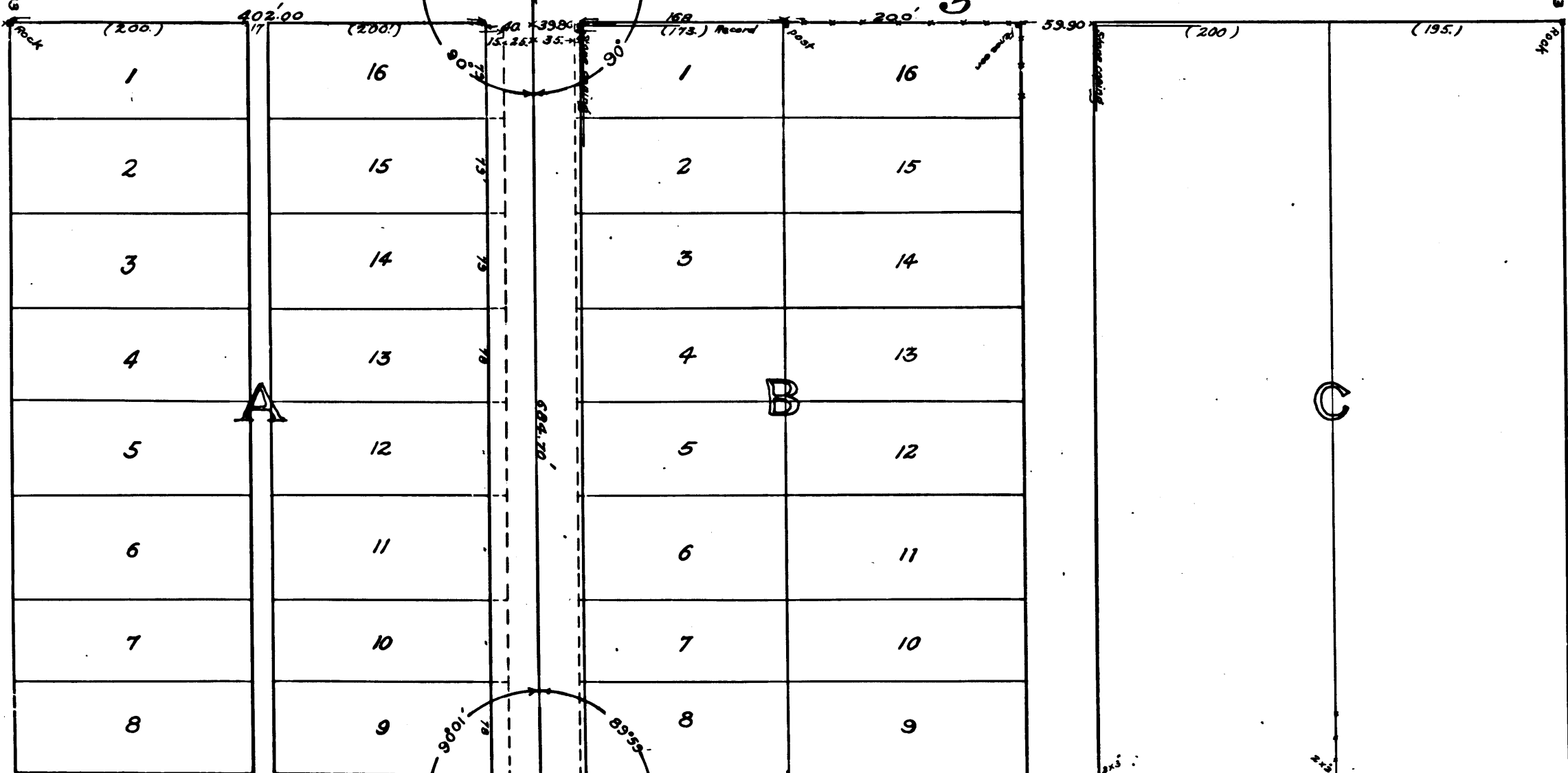


Pintoresca Hotel

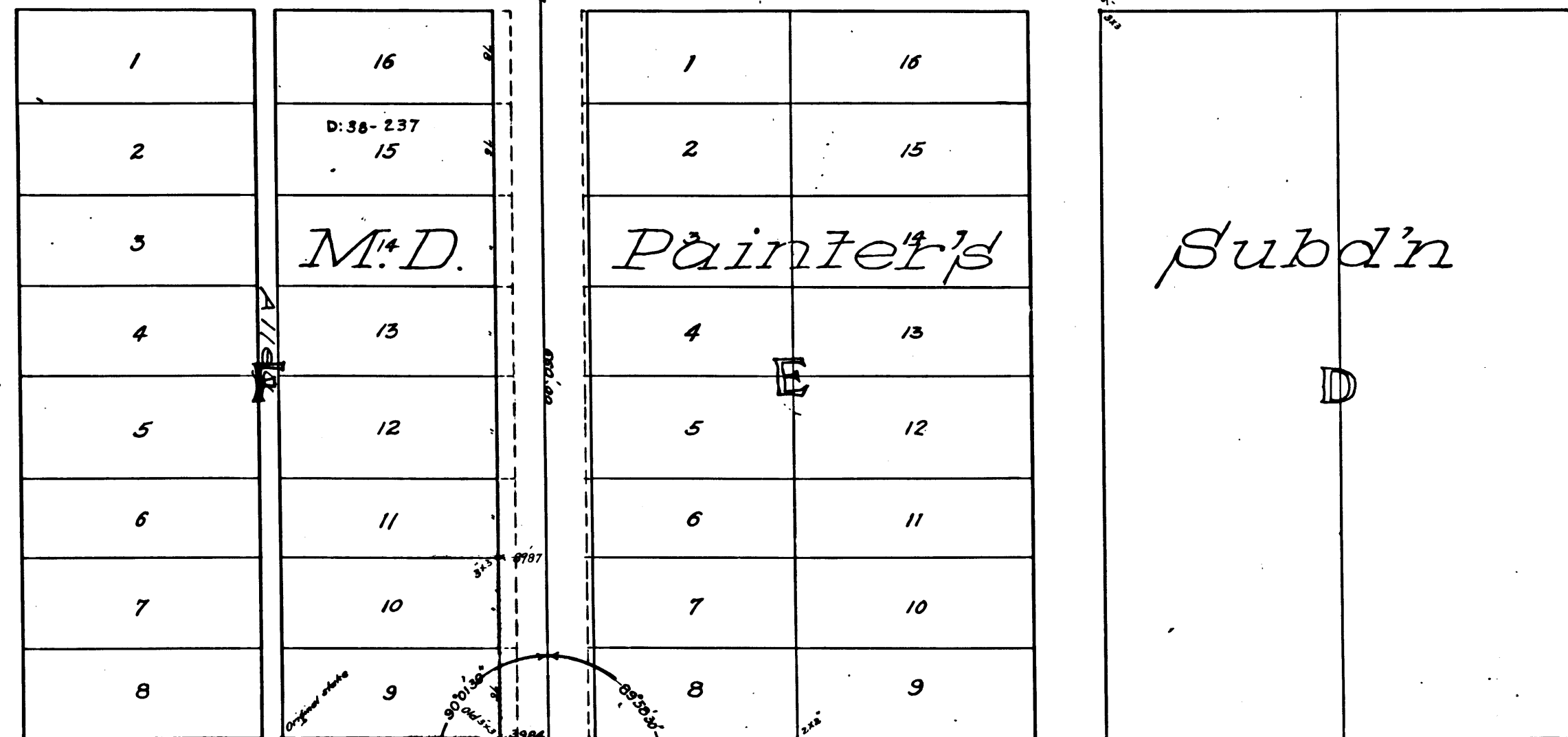
Washington St.

IONIA AVE.

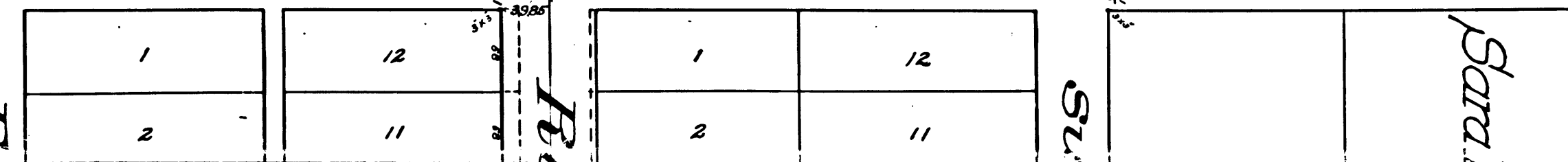
SUMMIT PLACE



Jefferson St.



Roberts St.



PEPPER ST.

LOGAN ST.

HAMMOND ST.

DOUGLAS ST.

CS	4	1	3	3
A	1	OF	A	3

Painter
Raymond

MAP

Raymond Avenue,

from — Painter St. to Washington St.

L.S. ANGLERS CO. GAL.

L.V. Young & Worth, Co. Surv'r

March, 1903.

SCALE 100 FT. = 1 INCH.

L.B. 6-1.
I.M. No 9

COUNTY SURVEYORS MAP NO. 4133

C	S	4	1	3	3
A	2	OF	A	3	

DOUGLAS ST.

Marengo Ave.

Ave.

Subd'n	
4	13
5	12
6	11
7	10
8	9

Sara M. Hall, Sub.	
1	12
2	11
3	10
4	9
5	8
6	7

Subd'n	
11	20
12	19

A. J. Samuels Replat	
20	1
19	2
18	3
17	4
16	5
15	6
14	7
13	8
12	9
11	10

Mountain St.

Painter's	
4	13
5	12
6	11
7	10
8	9

Summit For widening to 65' see D: 2231-151 D: 8-19	
1	12
2	11
3	10
4	9
5	8
6	7

Lewis	
11	20
12	19
14	17
15	16

H. P. Hoys' Sub'n	
24	1
22	2
22	3
22	4
22	5
20	6
19	7
18	8
17	9
17	10

Mountain St.

M. D.	
4	13
5	12
6	11
7	10
8	9

Raymond	
1	12
2	11
3	10
4	9
5	8
6	7

H. C.	
1	10
2	9
3	8
4	7
5	6

Midhener & Sub'n	
8	16
7	15
6	14
4	11
3	10
2	9

Mountain St.

Fair Oaks

Ave.

HAMMOND ST.

Alley

GLORIETA ST.

Annex,

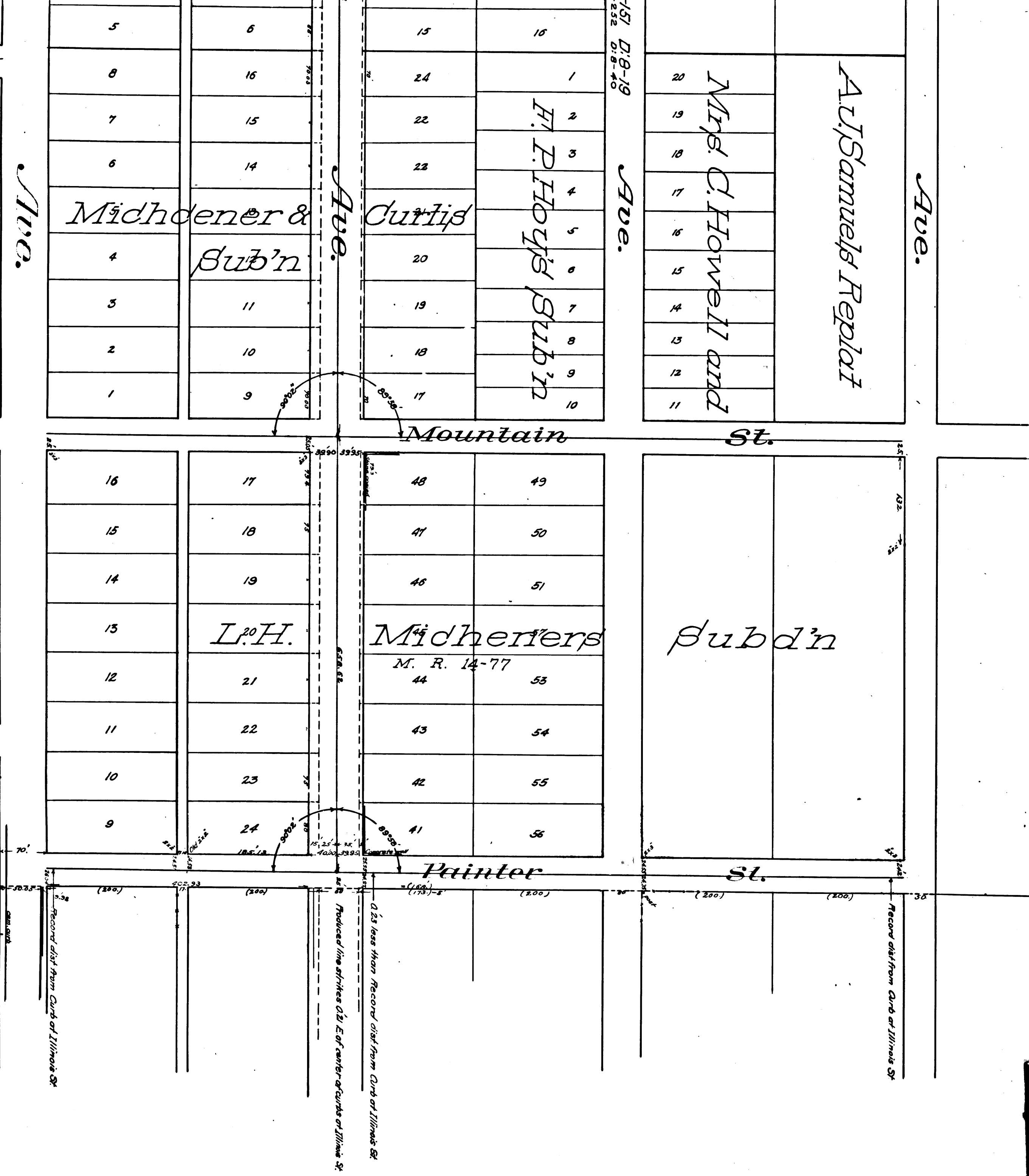
Illinois
County St.

Sur'r

COUNTY SURVEYORS MAP NO. 4133



C	S	4	1	3	3
A	3	OF	A	3	



GLORIETA ST.

Ave.

YALE ST.

Ave.

Ave.

Mountain St.

Painter St.

Micheiners & Sub'n

Curtis

H. P. Hoops Sub'n

Sub'n

Micheiners

M. R. 14-77

L.H.