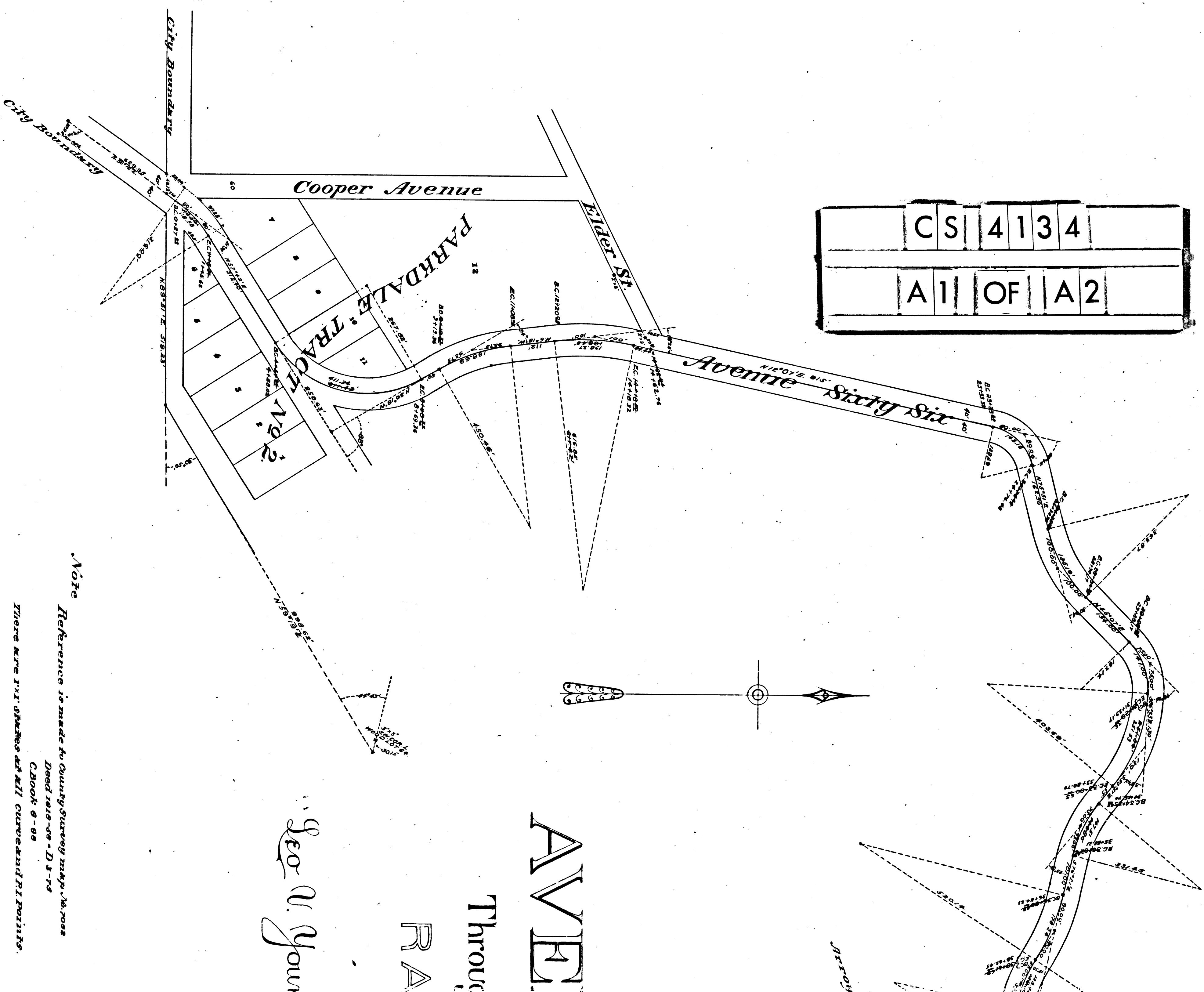


C	S	4	1	3	4
A	1	OF	A	2	



AVENUE  
 Through  
 PARKDALE  
 TRACT No. 2  
 See U. Your

Note  
 Reference is made to County Survey maps, 1870-88  
 Deed 1019-88 - D 3-75  
 C Book 0-88  
 There were 1 x 1 stakes at all curve and P.I. points.

