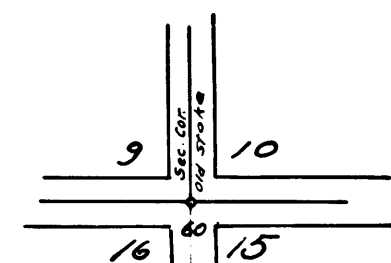


North



MAP

of the FOSTER ROAD

As Surveyed under Instructions from the Honorable
Board of Supervisors

Scale 200ft=1in
In Notebook 2 pp 135-140

Surveyed Jan 10, 1896
by E. T. Wright Co. Sur.

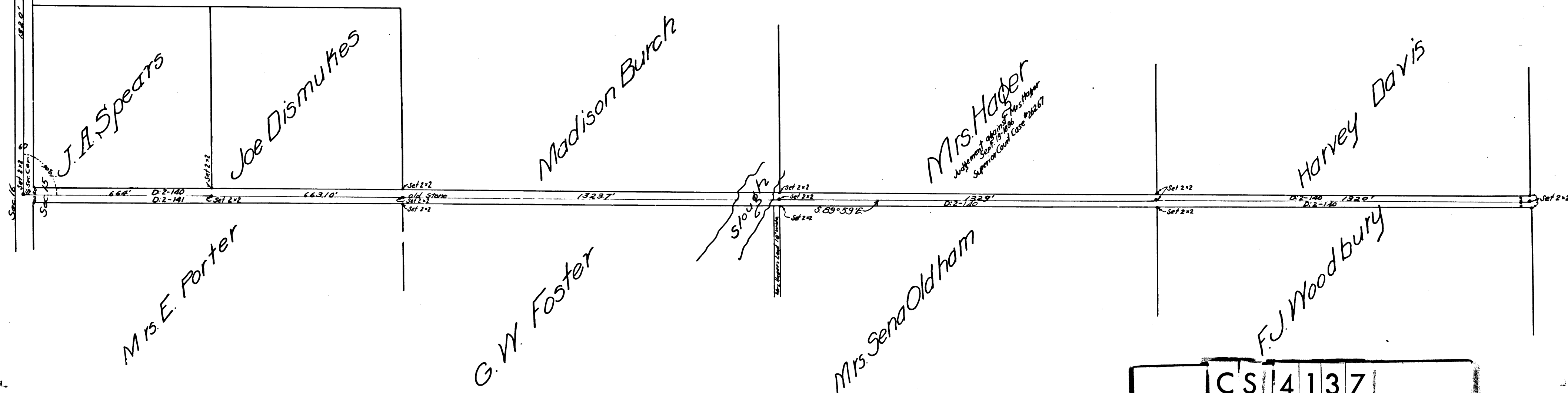
Centre of Road through Centre of Sec. 15

T. 35. R. 12. W.

~ INDEX No 33 ~

COUNTY SURVEYORS MAP NO. 4137
(FORMERLY C.S. MAP No. 2294)

Retraced by T. Kardon, Jan. 58
Checked by J. Black



CS 4137