

OUTLINES OF THE RUBIO CAÑON PROTECTION DISTRICT

AS SURVEYED UNDER INSTRUCTIONS FROM THE HON.
BOARD OF SUPERVISORS OF LOS ANGELES
COUNTY, CALIFORNIA, SEPTEMBER, 1895.

SCALE 500 FEET TO 1 INCH

E. T. Wright, County Surveyor.

by W. B. Nicholson, Deputy.

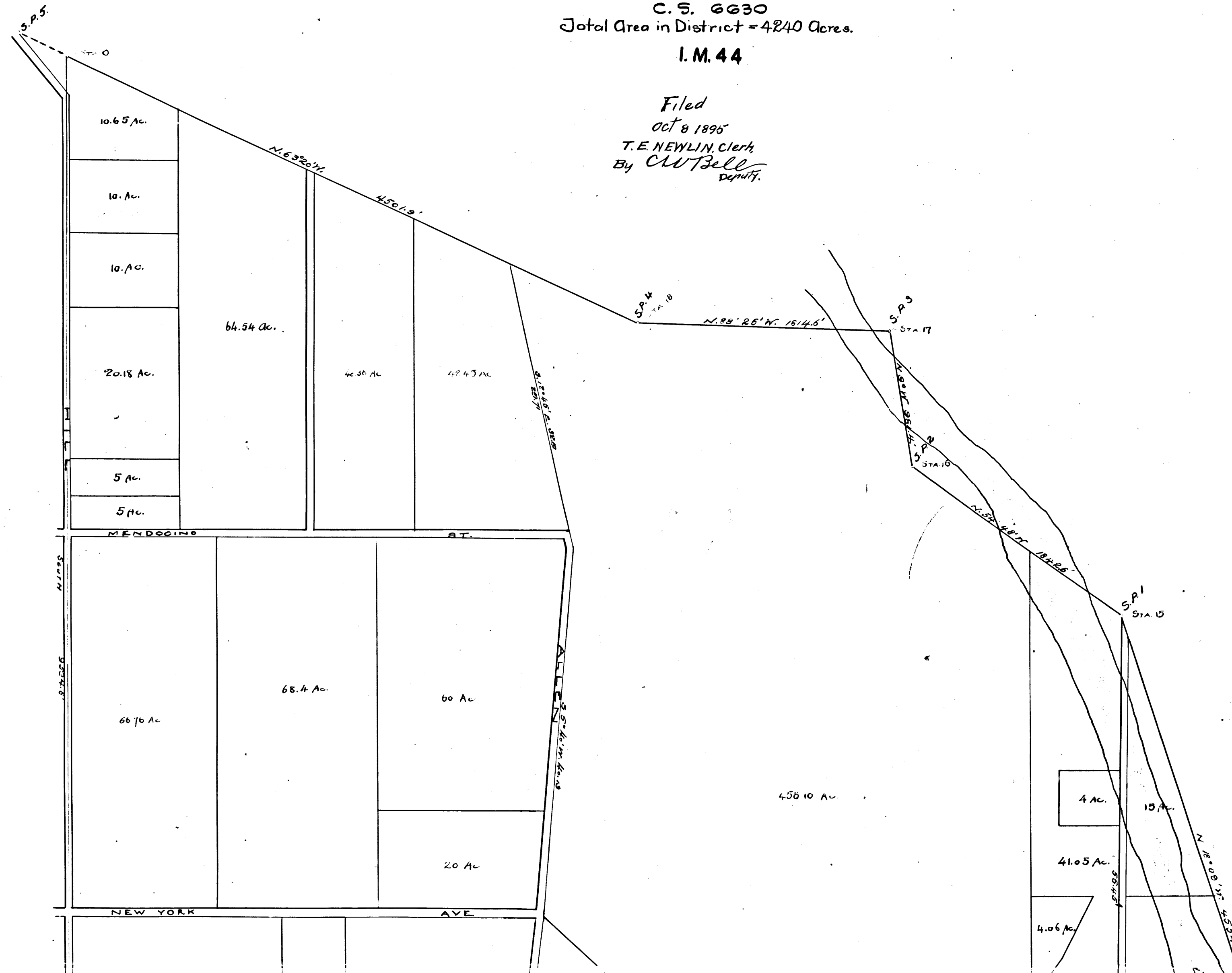
F. B. 5-20-39

C. S. 6630

Total Area in District = 4240 Acres.

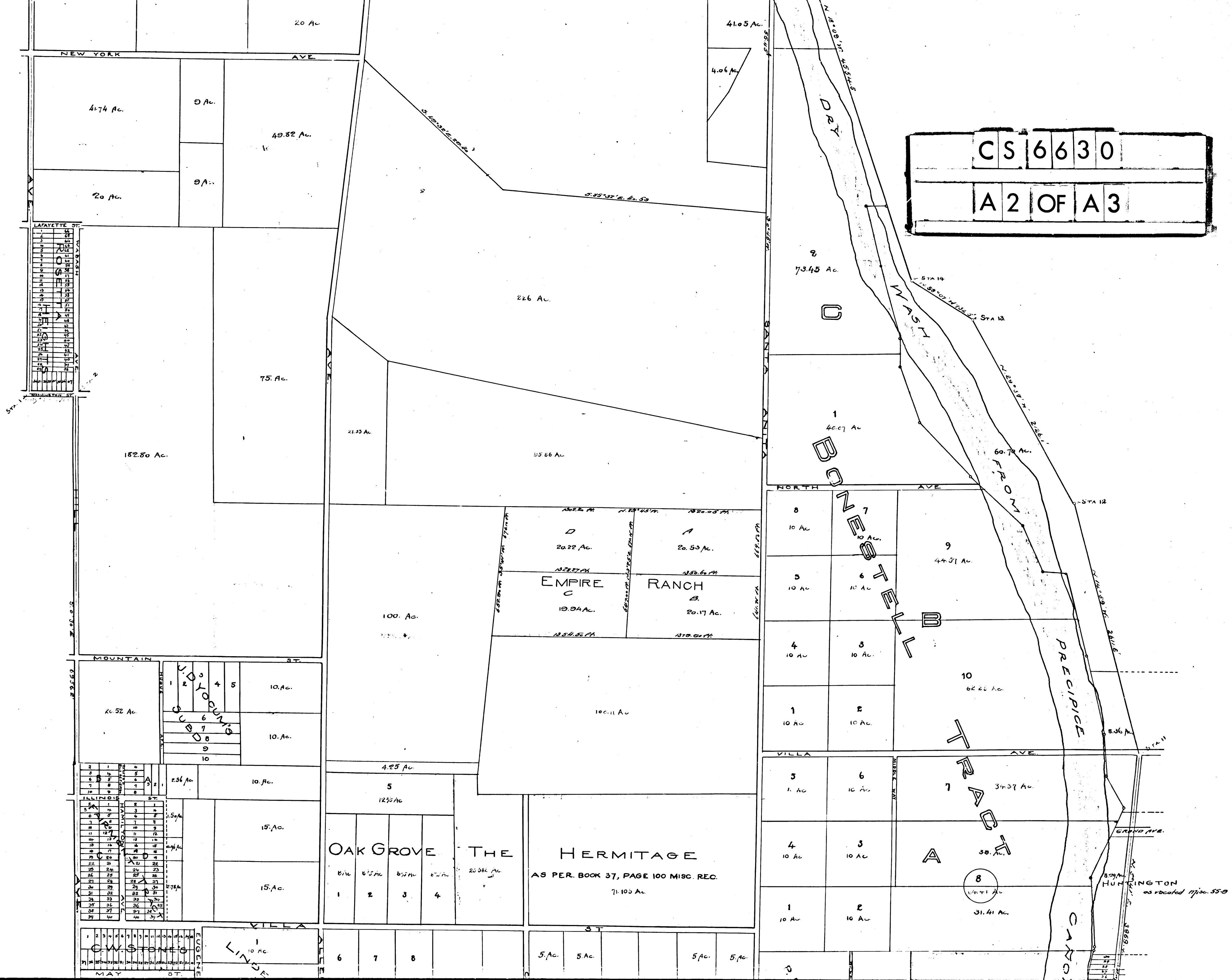
I. M. 44

Filed
Oct 9 1895
T. E. NEWLIN, Clerk
By *CLUTZELL* Deputy.



C	S	6	6	3	0
A	1	OF	A	3	

CS 6630
A 2 OF A 3



1	2	3	4	5	6	7	8	9	10
11	12	13	14	15	16	17	18	19	20
21	22	23	24	25	26	27	28	29	30
31	32	33	34	35	36	37	38	39	40
41	42	43	44	45	46	47	48	49	50
51	52	53	54	55	56	57	58	59	60
61	62	63	64	65	66	67	68	69	70
71	72	73	74	75	76	77	78	79	80
81	82	83	84	85	86	87	88	89	90
91	92	93	94	95	96	97	98	99	100

1 2 3 4 5
6 7 8 9 10
SUBDIVISION

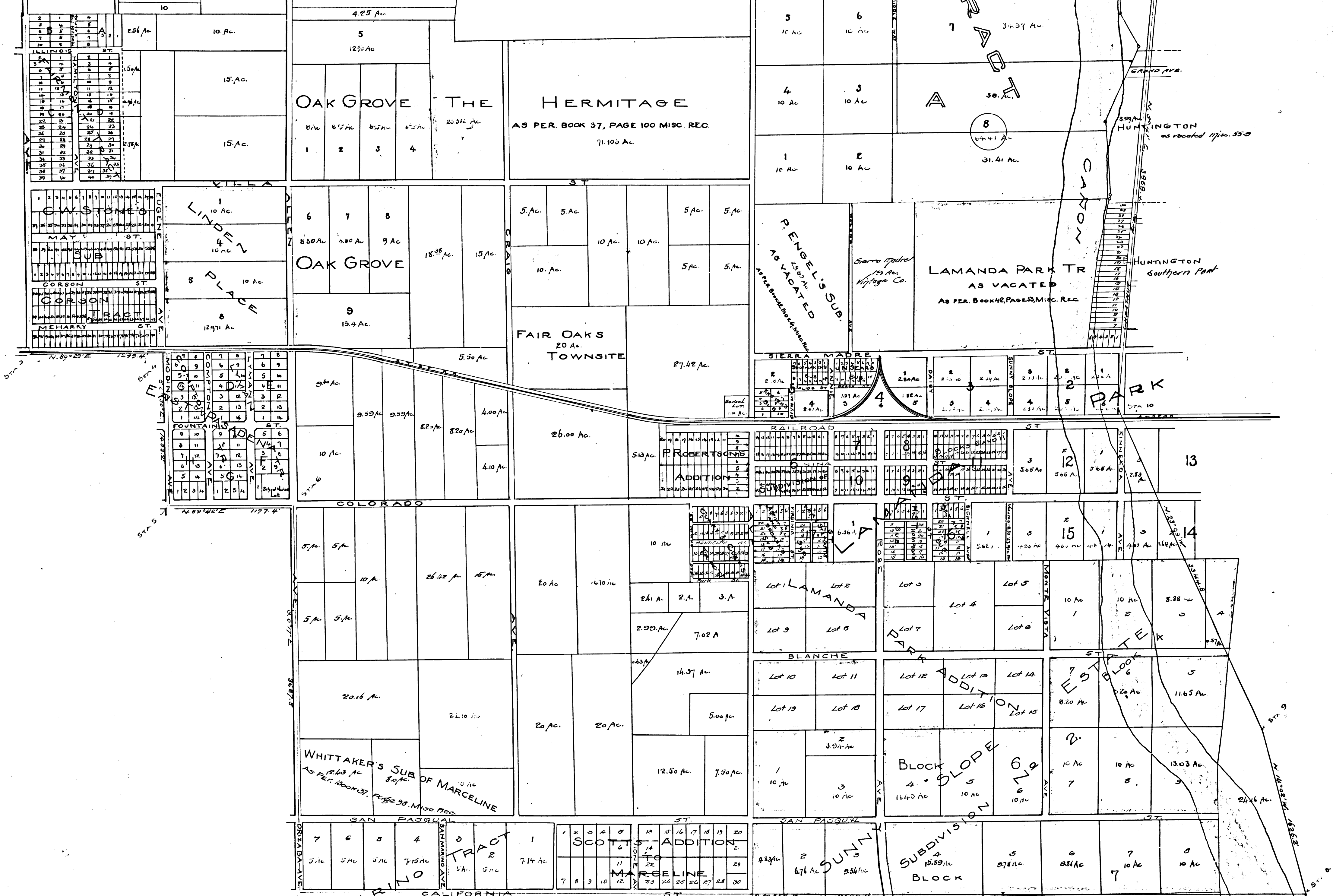
1	2	3	4	5	6	7	8	9	10
11	12	13	14	15	16	17	18	19	20
21	22	23	24	25	26	27	28	29	30
31	32	33	34	35	36	37	38	39	40
41	42	43	44	45	46	47	48	49	50
51	52	53	54	55	56	57	58	59	60
61	62	63	64	65	66	67	68	69	70
71	72	73	74	75	76	77	78	79	80
81	82	83	84	85	86	87	88	89	90
91	92	93	94	95	96	97	98	99	100

C.W. STONE
MAY ST.

LINDA
10 AC.

AS PER. BOOK 37, PAGE 100 MISC. REC.

as located 17/50-55



SAN MARINO TRACT

CS 6630
A 3 OF A 3