

MAP

OF TOPANGA CAÑON ROAD
 County Road from Calabasas Via Topanga Cañon
 to Pacific Ocean

Surveyed in June 1896. E.T. Wright, Co. Sur. by E.M. Cullah, Dept
 Road 50 ft Wide. Lines as Surveyed Centre of Road

Scale: 1000 ft per in.
 N66°00'00" E 216.50

COUNTY SURVEYORS MAP NO. 6633
 I.M. 89

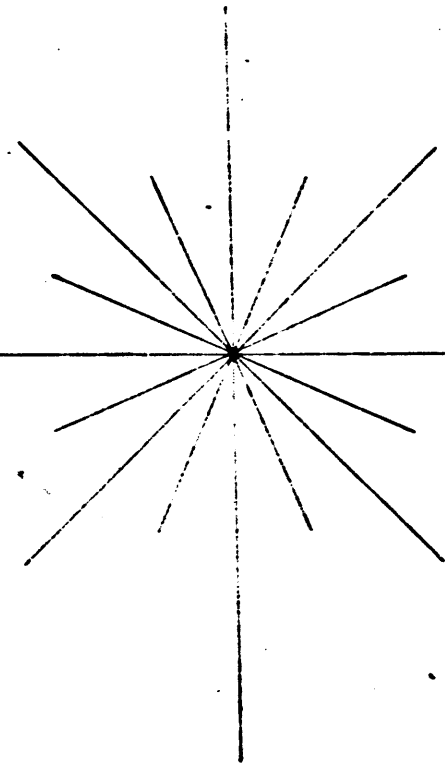
JULY 16, 1900 - D: 10-183 - R.B. 6-123
 MARCH 16, 1909 - " - " - R.B. 10-355

For proposed change in location of southern
 portion of this road See C.S. Map No. 7770 (FM-17770)
 Road between Sta. 5 and Sta. 128 named Old Topanga
 Canyon Road - D: 49-32 R.B. 40-94
 Road lying S'y of Sta. 128 named Topanga Canyon Blvd.
 D: 49-202 Min. Bk. 179-329

This Photact tracing made Dec. 1956 from
 the original Mounted Paper Map, which has
 been discarded
 Retouched by J.B. June, 1957
 Checked by E.P.

SAN FERNANDO

North

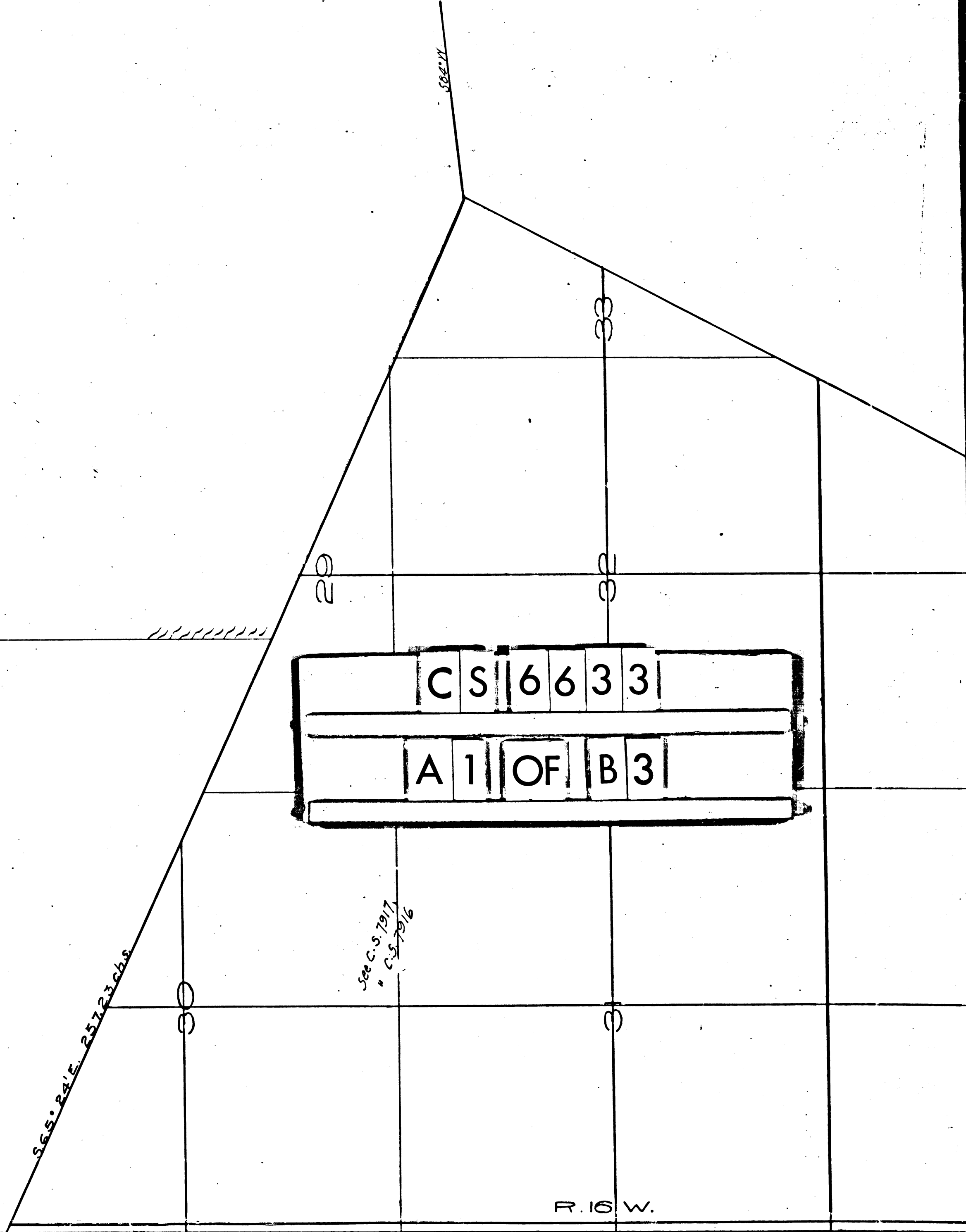


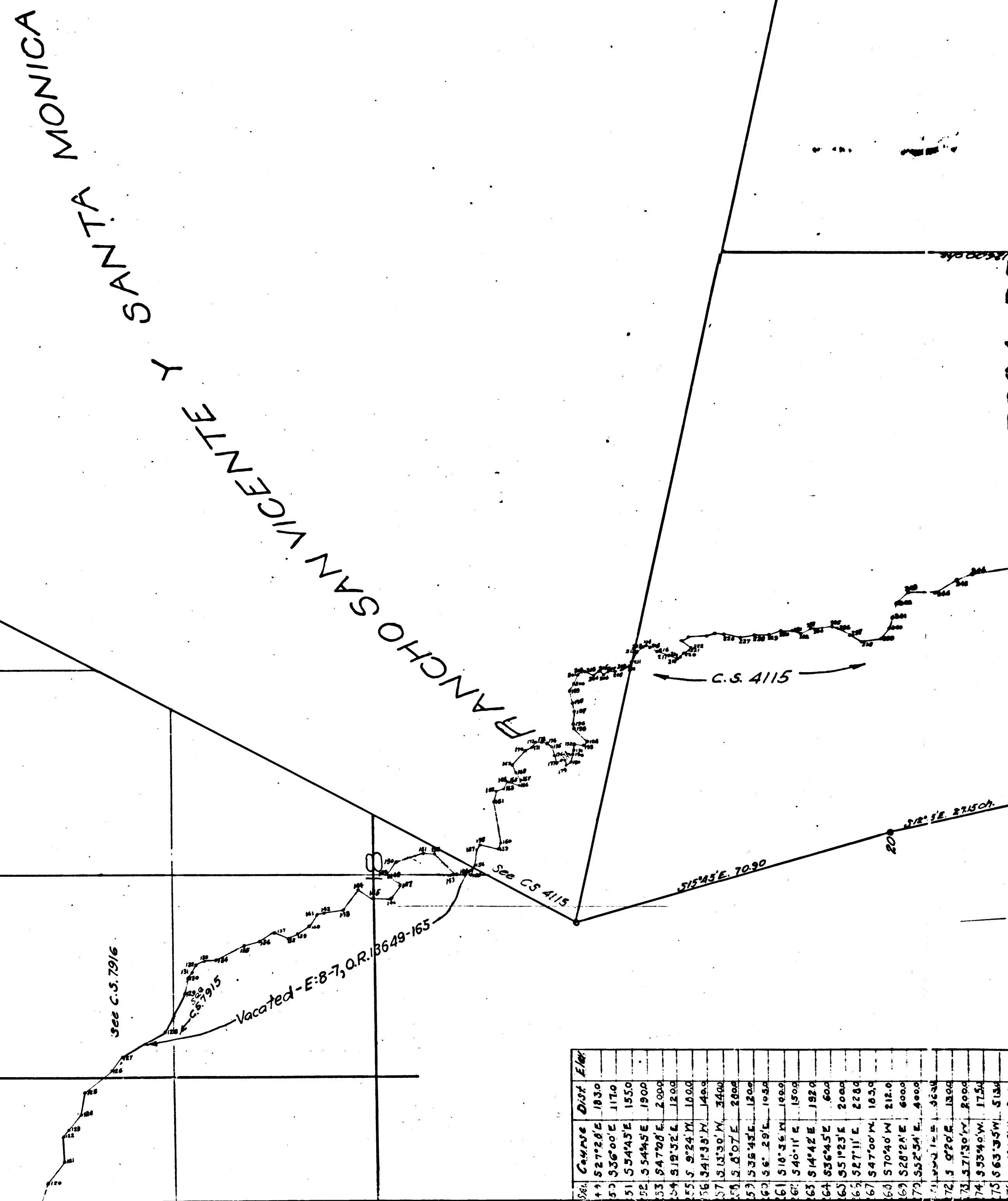
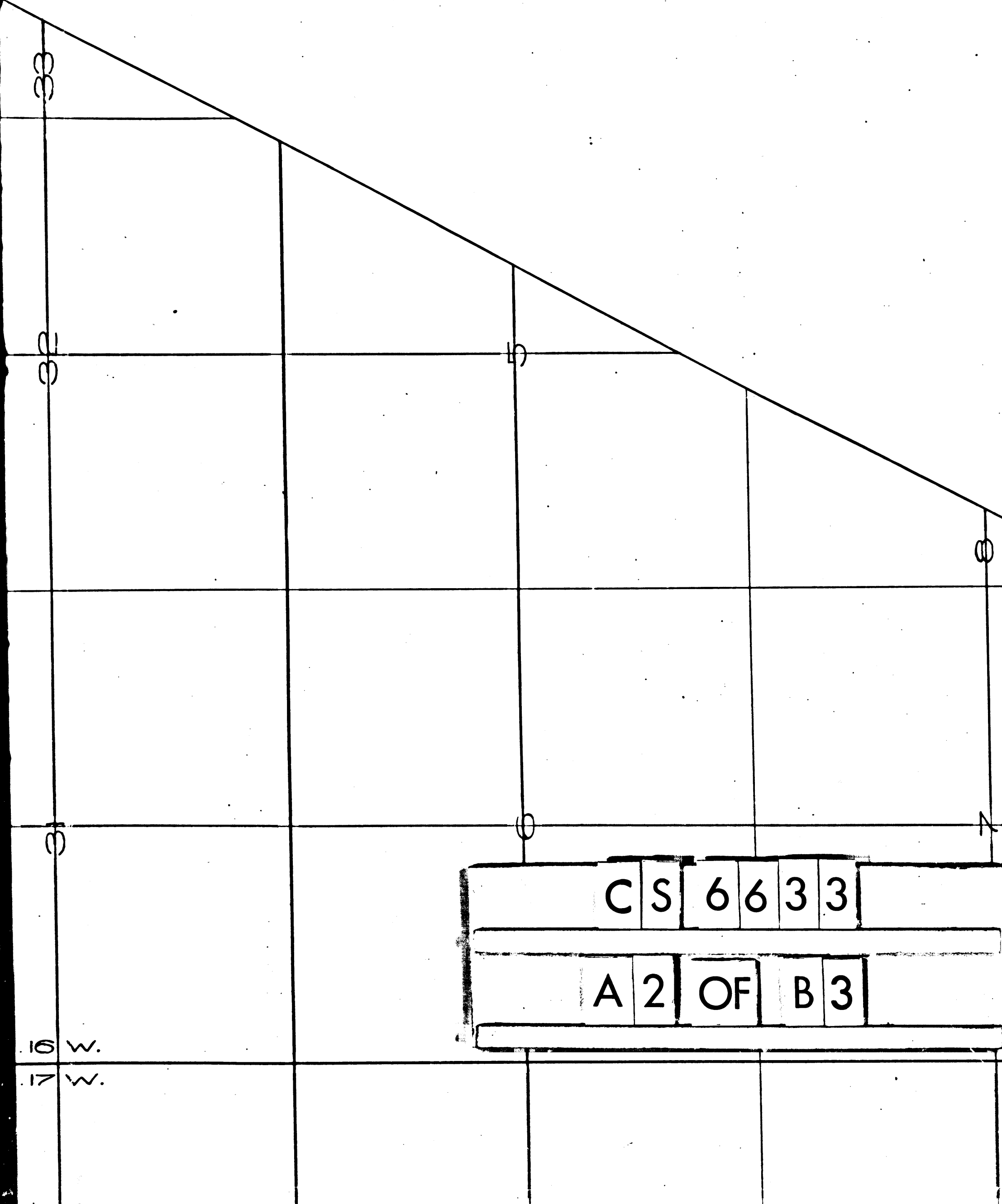
S.G.S. PALE. 25723 chs

CS 6633
 A 1 OF B 3

See C.S. 7917
 " C.S. 7916

R. 16 W.





CS 6633
A 2 OF B 3

Sta.	Course	Dist.	Elev.
49	S27°28'E	1830	
50	S36°00'E	1170	
51	S54°45'E	1550	
52	S54°45'E	1900	
53	S47°30'E	2000	
54	S19°32'E	1200	
55	S 9°24'W	1000	
56	S41°33'W	1400	
57	S13°30'W	3400	
58	S 5°07'E	2000	
59	S35°45'E	1200	
60	S6° 29'E	1050	
61	S10° 36'W	1000	
62	S40°11'E	1500	
63	S14°42'E	1920	
64	S56°45'E	600	
65	S51°23'E	2000	
66	S27°11'E	2280	
67	S47°00'W	1650	
68	S70°40'W	2150	
69	S20°20'E	6000	
70	S52°54'E	6000	
71	S 3° 12' E	3630	
72	S 9° 02' E	1300	
73	S 71° 30' W	2000	
74	S 93° 40' W	1750	
75	S 63° 33' W	5130	
76	S 14° 42' W	2000	

RANCHO SAN VICENTE

RANCHO BOCA DE SANTA MONICA

Rascul Marquej

Bonifacio Marquej

Vacated - E-8-7, O.R. 13649-165
 5-1915

See C.S. 4115

See P.M. 1136-24
 E.S. 17770
 C.S. 7915

NOTE: Line in green denotes new line
 from Sta 269 to Sta 296

Note: Lines of courses in blue run by Jas. H. Smith, July 12, 1880
 F. B. 10 pg 30

Dist	Elev
E	1830
E	1170
E	1550
E	1900
E	2000
E	1200
N	1800
N	1400
N	2400
N	2800
N	1200
N	1900
N	1500
N	1920
N	600
N	2000
N	2280
N	1850
N	2120
N	6000
N	4900
N	3250
N	1300
N	2000
N	5130
N	3000
N	4000
N	3120
N	3500
N	2400
N	600
N	10500
N	3120
VER LINE	
EST	
212.0	
2...	
83.0	
042	
135.0	
160.0	
610.0	
1600	
602	
185.0	
320.0	
285.0	
200.0	
200.0	
213.7	
225.0	
365.0	
146.7	
240.0	
240.0	
695.9	
850.0	
116.0	
372.0	
800.0	
1098.0	
913.44	to Sta 6

C.S. 4115

S15°45'E. 70.90

S12°15'E. 27.15 ch.

S22°52'E. 90.93 ch.

S15°45'E. 26.90 ch.

N26°15'W. 53.85 ch.

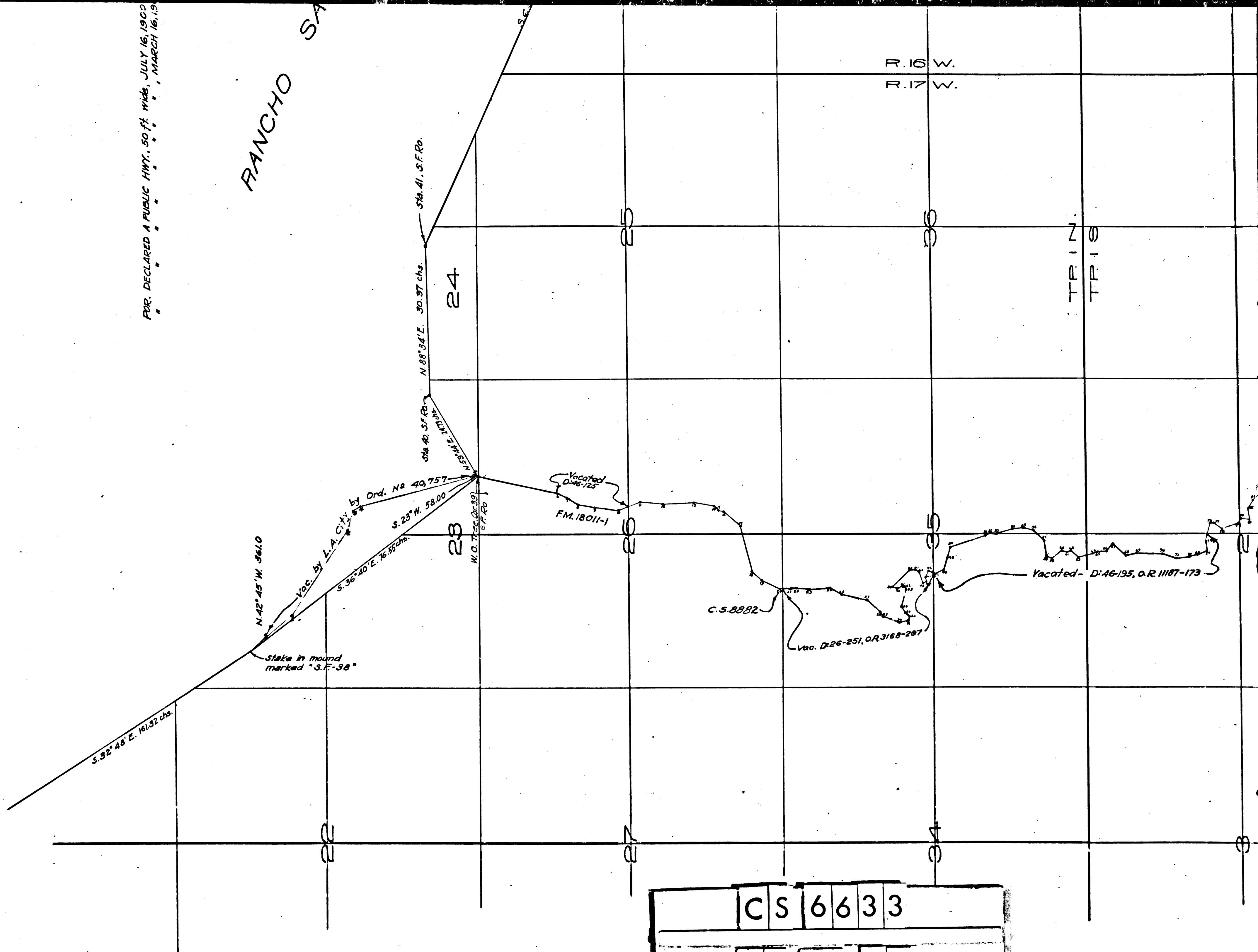
See C.S. 6725

From Cor. bet B. Marquej & P. Marquej (See C.S. 6725)

C	S	6	6	3	3
A	3	OF	B	3	

FDR DECLARED A PUBLIC HWY. 50 FT. WIDE, JULY 16, 1900
MARCH 16, 19

RANCHO SA



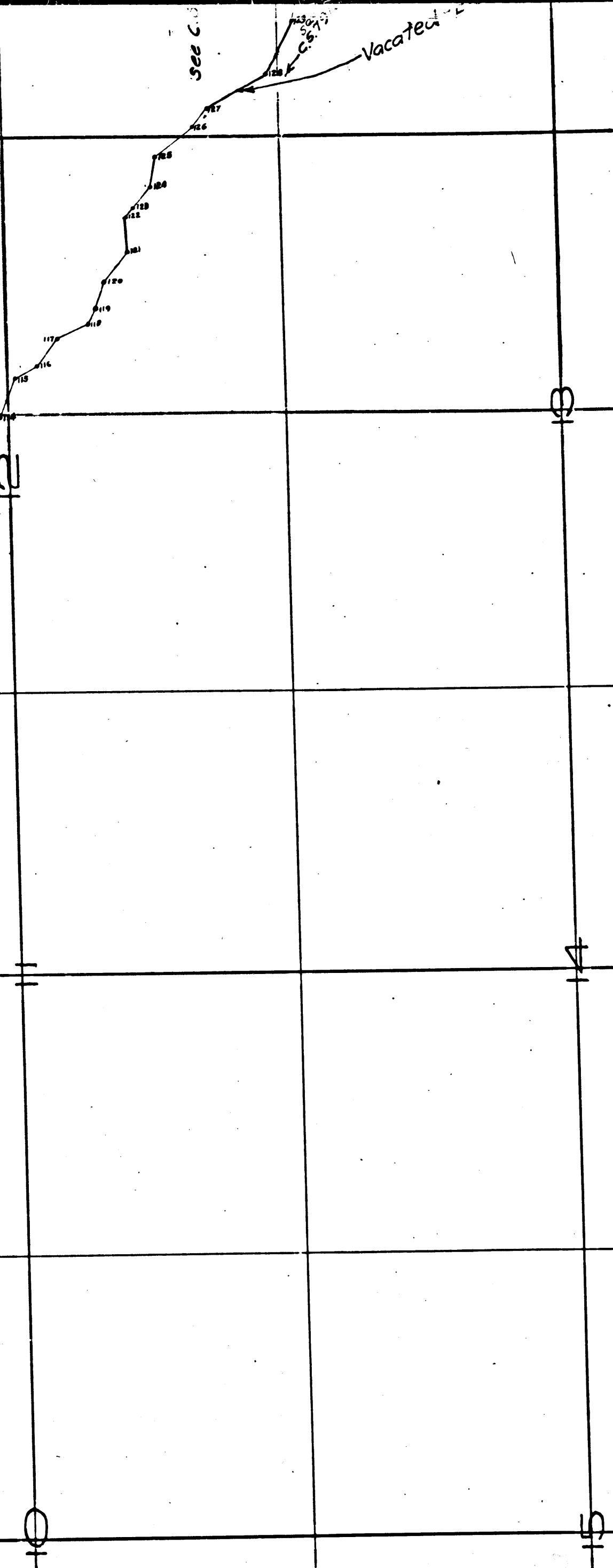
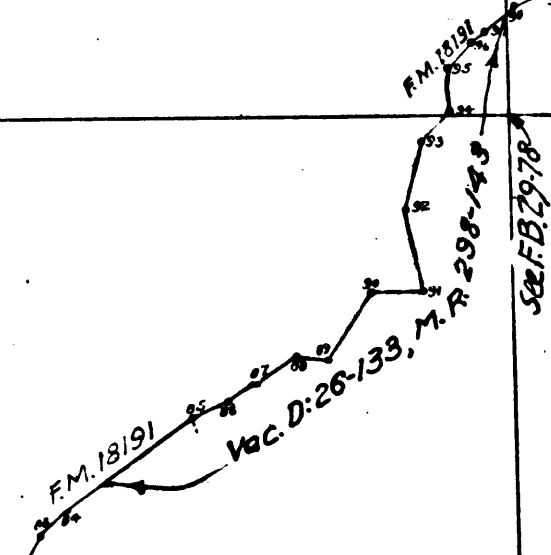
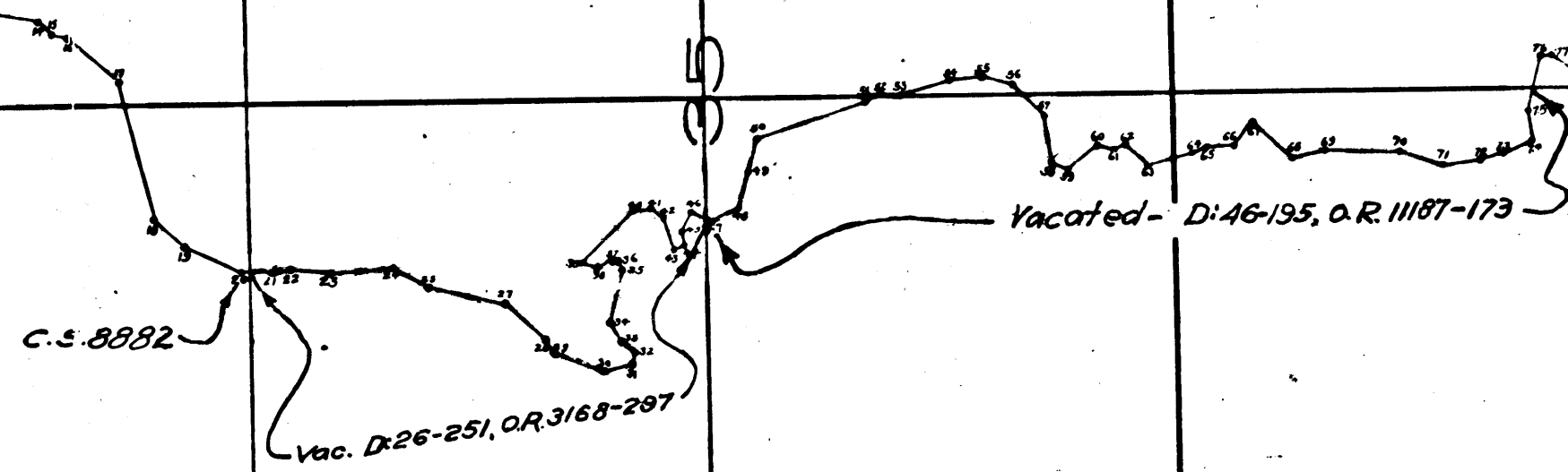
R. 16 W.
R. 17 W.

TP 10
TP 10

C	S	6	6	3	3
B	1	OF	B	3	

R. 16 W.
R. 17 W.

TP 12
TP 10

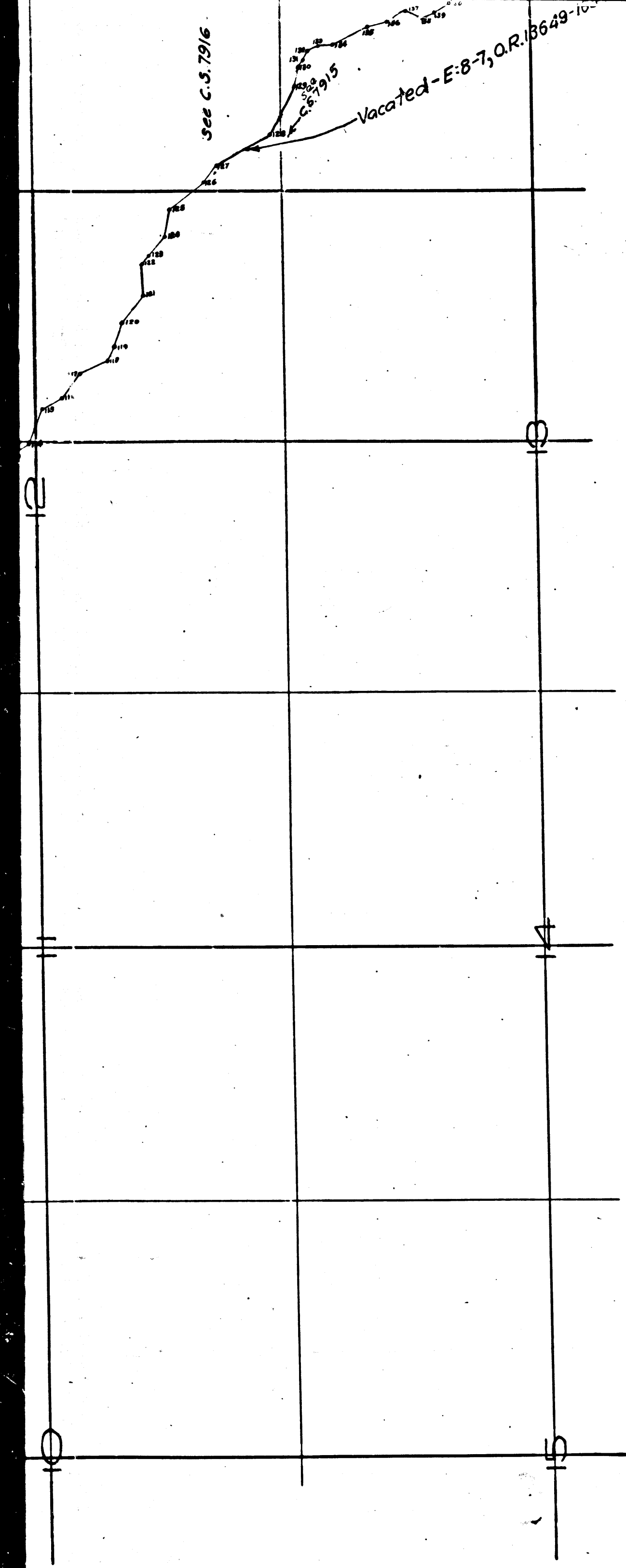


Sta.	Course	Dist.	Elm.	Sta.	Course	Dist.	Elm.
1	S 56° 00' E	1760	1830	21	S 27° 28' E	1830	1830
2	S 74° 45' E	320	1800	22	S 36° 00' E	1170	1830
3	S 32° 15' E	150	1785	23	S 54° 45' E	1550	1830
4	S 15° 30' E	2000	1585	24	S 54° 45' E	1900	1830
5	S 12° 20' W	145	1570	25	S 47° 00' E	2000	1830
6	S 21° 00' W	188	1552	26	S 19° 32' E	1800	1830
7	S 37° 00' W	250	1515	27	S 51° 33' W	1400	1830
				28	S 51° 33' W	1400	1830
				29	S 51° 33' W	1400	1830
				30	S 51° 33' W	1400	1830
				31	S 51° 33' W	1400	1830
				32	S 51° 33' W	1400	1830
				33	S 51° 33' W	1400	1830
				34	S 51° 33' W	1400	1830
				35	S 51° 33' W	1400	1830
				36	S 51° 33' W	1400	1830
				37	S 51° 33' W	1400	1830
				38	S 51° 33' W	1400	1830
				39	S 51° 33' W	1400	1830
				40	S 51° 33' W	1400	1830
				41	S 51° 33' W	1400	1830
				42	S 51° 33' W	1400	1830
				43	S 51° 33' W	1400	1830
				44	S 51° 33' W	1400	1830
				45	S 51° 33' W	1400	1830
				46	S 51° 33' W	1400	1830
				47	S 51° 33' W	1400	1830
				48	S 51° 33' W	1400	1830
				49	S 51° 33' W	1400	1830
				50	S 51° 33' W	1400	1830
				51	S 51° 33' W	1400	1830
				52	S 51° 33' W	1400	1830
				53	S 51° 33' W	1400	1830
				54	S 51° 33' W	1400	1830
				55	S 51° 33' W	1400	1830
				56	S 51° 33' W	1400	1830
				57	S 51° 33' W	1400	1830
				58	S 51° 33' W	1400	1830
				59	S 51° 33' W	1400	1830
				60	S 51° 33' W	1400	1830
				61	S 51° 33' W	1400	1830
				62	S 51° 33' W	1400	1830
				63	S 51° 33' W	1400	1830
				64	S 51° 33' W	1400	1830
				65	S 51° 33' W	1400	1830
				66	S 51° 33' W	1400	1830
				67	S 51° 33' W	1400	1830
				68	S 51° 33' W	1400	1830
				69	S 51° 33' W	1400	1830
				70	S 51° 33' W	1400	1830
				71	S 51° 33' W	1400	1830
				72	S 51° 33' W	1400	1830
				73	S 51° 33' W	1400	1830
				74	S 51° 33' W	1400	1830
				75	S 51° 33' W	1400	1830
				76	S 51° 33' W	1400	1830
				77	S 51° 33' W	1400	1830
				78	S 51° 33' W	1400	1830
				79	S 51° 33' W	1400	1830
				80	S 51° 33' W	1400	1830
				81	S 51° 33' W	1400	1830
				82	S 51° 33' W	1400	1830
				83	S 51° 33' W	1400	1830
				84	S 51° 33' W	1400	1830
				85	S 51° 33' W	1400	1830
				86	S 51° 33' W	1400	1830
				87	S 51° 33' W	1400	1830
				88	S 51° 33' W	1400	1830
				89	S 51° 33' W	1400	1830
				90	S 51° 33' W	1400	1830
				91	S 51° 33' W	1400	1830
				92	S 51° 33' W	1400	1830
				93	S 51° 33' W	1400	1830
				94	S 51° 33' W	1400	1830
				95	S 51° 33' W	1400	1830
				96	S 51° 33' W	1400	1830
				97	S 51° 33' W	1400	1830
				98	S 51° 33' W	1400	1830
				99	S 51° 33' W	1400	1830
				100	S 51° 33' W	1400	1830

CS 6633
B 2 OF B 3

See C.S. 7916

Vacated - E-8-7, O.R. 18649-10



Sta	Course	Dist	Sta	Course	Dist	Sta	Course	Dist	Sta	Course	Dist	Sta	Course	Dist	Sta	Course	Dist
1	S 55° 00' E	176.0	121	N 88° 00' E	319.0	190	S 86° 00' E	156.0	249	S 27° 20' E	183.0						
2	S 72° 45' E	320.0	122	S 65° 00' E	107.5	191	S 71° 00' E	60.0	250	S 36° 00' E	117.0						
3	S 29° 15' E	150.0	123	S 50° 15' E	275.0	192	S 43° 00' E	35.0	251	S 54° 45' E	155.0						
4	S 14° 50' E	208.0	124	S 30° 00' E	220.0	193	S 14° 15' W	115.0	252	S 54° 45' E	190.0						
5	S 12° 20' W	146.5	125	S 33° 45' E	450.0	194	S 49° 00' E	86.0	253	S 47° 00' E	200.0						
6	S 21° 00' W	180.0	126	S 55° 30' E	225.0	195	N 42° 45' E	230.0	254	S 19° 32' E	120.0						
7	S 51° 00' W	250.0	127	S 23° 00' E	670.0	196	N 83° 00' E	70.0	255	S 9° 24' W	100.0						
8	S 10° 00' W	300.0	128	S 56° 45' E	572.0	197	S 07° 30' E	170.0	256	S 41° 39' W	140.0						
9	S 6° 14' W	420.0	129	S 34° 30' E	190.0	198	N 60° 15' E	167.0	257	S 13° 30' W	340.0						
10	S 9° 45' E	400.0	130	S 66° 00' E	80.0	199	S 41° 00' E	115.0	258	S 4° 07' E	200.0						
11	S 5° 00' E	400.0	131	S 60° 15' E	100.0	200	S 70° 15' E	120.0	259	S 36° 45' E	120.0						
12	S 3° 00' E	350.0	132	S 26° 00' E	135.0	201	S 49° 15' E	55.0	260	S 6° 29' E	195.0						
13	S 11° 00' W	350.0	133	S 29° 30' E	145.0	202	S 40° 00' E	45.0	261	S 16° 36' W	100.0						
14	S 44° 30' W	100.0	134	S 20° 00' E	425.0	203	S 20° 00' W	115.0	262	S 14° 42' E	182.0						
15	S 0° 30' W	100.0	135	S 14° 30' E	210.0	204	S 40° 30' E	87.0	263	S 36° 45' E	60.0						
16	S 42° 40' W	390.0	136	S 25° 30' E	240.0	205	S 27° 00' W	90.0	264	S 55° 12' E	200.0						
17	S 76° 05' W	780.0	137	S 17° 30' W	180.0	206	S 40° 45' E	66.5	265	S 27° 11' E	228.0						
18	S 45° 00' W	225.0	138	S 18° 45' E	115.0	207	S 0° 40' E	92.0	266	S 47° 00' W	165.0						
19	S 24° 45' W	350.0	139	S 55° 00' E	185.0	208	S 39° 02' E	90.0	267	S 47° 00' W	165.0						
20	S 1° 15' W	164.0	140	S 57° 57' E	174.0	209	S 29° 30' E	90.0	268	S 70° 40' W	212.0						
21	S 13° 15' E	110.0	141	S 18° 05' E	100.0	210	S 47° 21' E	70.0	269	S 28° 20' E	600.0						
22	S 9° 50' W	255.0	142	S 56° 45' E	260.0	211	S 65° 12' E	150.0	270	S 52° 54' E	400.0						
23	S 35° 30' E	345.0	143	S 55° 00' E	330.0	212	S 65° 12' E	150.0	271	S 55° 12' E	325.0						
24	S 31° 10' W	230.0	144	S 21° 00' W	220.0	213	S 15° 19' E	54.0	272	S 02° 00' E	130.0						
25	S 45° 00' W	360.0	145	S 6° 30' W	230.0	214	S 24° 45' W	4.80	273	S 71° 30' W	200.0						
26	S 4° 00' W	100.0	146	S 50° 00' E	214.0	215	S 29° 10' W	115.0	274	S 63° 35' W	513.0						
27	S 33° 30' W	285.0	147	N 41° 10' E	200.0	216	S 15° 44' W	170.0	275	S 14° 42' W	200.0						
28	S 52° 00' W	100.0	148	N 74° 45' E	45.0	217	S 32° 33' W	106.0	276	S 12° 35' E	300.0						
29	S 20° 00' W	250.0	149	S 52° 00' E	175.0	218	S 16° 10' E	60.0	277	S 47° 16' E	400.0						
30	S 17° 00' E	170.0	150	S 13° 10' E	380.0	219	S 45° 15' E	71.0	278	S 46° 24' E	312.0						
31	S 85° 00' E	70.0	151	S 7° 30' W	150.0	220	S 42° 00' E	54.0	279	S 21° 41' W	350.0						
32	N 85° 30' E	85.0	152	S 45° 00' W	390.0	221	S 32° 59' E	62.0	280	S 9° 42' W	240.0						
33	N 59° 30' E	150.0	153	S 7° 00' E	90.0	222	N 36° 45' E	145.0	281	S 4° 12' W	240.0						
34	S 76° 10' E	300.0	154	S 9° 30' W	85.0	223	S 36° 45' E	106.0	282	S 37° 55' E	240.0						
35	N 75° 45' E	65.0	155	S 67° 30' E	140.0	224	S 36° 45' E	106.0	283	S 56° 47' E	60.0						
36	N 11° 30' E	50.0	156	S 52° 30' E	205.0	225	S 37° 25' W	25.0	284	S 82° 00' E	105.0						
37	N 33° 15' W	130.0	157	S 59° 30' E	75.0	226	S 0° 15' W	70.0	285	N 53° 10' E	105.0						
38	N 39° 00' E	65.0	158	S 12° 30' W	250.0	227	S 18° 24' W	232.0	286	S 10° 54' E	60.0						
39	S 44° 40' E	425.0	159	S 58° 27' E	85.0	228	S 44° 46' E	177.0	287	S 0° 54' E	60.0						
40	S 1° 30' W	100.0	160	N 80° 50' E	585.0	229	S 12° 20' E	152.0	288	S 12° 30' W	146.7						
41	S 72° 30' W	185.0	161	S 79° 00' E	130.0	230	S 0° 17' E	180.0	289	S 55° 28' W	200.0						
42	S 72° 30' W	185.0	162	S 13° 45' E	10.0	231	S 24° 28' W	91.0	290	S 54° 26' W	320.0						
43	N 77° 30' E	65.0	163	S 54° 30' E	100.0	232	S 25° 42' W	155.0	291	S 69° 10' W	225.0						
44	N 77° 30' E	65.0	164	S 24° 07' E	300.0	233	S 17° 57' E	44.5	292	S 15° 21' W	200.0						
45	S 66° 30' E	120.0	165	S 13° 04' W	137.0	234	S 39° 30' E	225.0	293	S 57° 28' W	200.0						
46	S 16° 00' W	130.0	166	S 12° 30' E	60.0	235	S 22° 06' W	62.0	294	S 54° 26' W	320.0						
47	S 24° 00' E	175.0	167	N 59° 00' E	125.0	236	S 22° 06' W	62.0	295	S 41° 26' E	225.0						
48	S 73° 30' E	185.0	168	N 71° 30' E	190.0	237	S 35° 12' W	175.0	296	S 21° 26' E	213.7						
49	S 17° 10' E	200.0	169	S 47° 45' E	245.0	238	S 39° 05' E	250.0	297	S 54° 45' E	365.0						
50	S 17° 10' E	200.0	170	S 34° 15' E	100.0	239	S 54° 16' E	170.0	298	S 12° 30' W	146.7						
51	S 42° 15' E	110.0	171	S 67° 00' E	115.0	240	S 69° 48' E	182.0	299	S 4° 33' W	240.0						
52	S 17° 00' W	115.0	172	S 13° 00' W	80.0	241	S 79° 28' E	200.0	300	N 80° 32' E	695.8						
53	S 17° 15' E	295.0	173	S 24° 45' W	80.0	242	S 41° 49' E	200.0	301	N 73° 15' E	850.0						
54	S 33° 30' E	170.0	174	S 57° 30' W	90.0	243	S 0° 24' E	365.0	302	N 48° 30' E	116.0						
55	S 14° 00' W	200.0	175	S 71° 00' W	150.0	244	S 30° 35' E	310.0	303	S 86° 50' E	322.0						
56	S 45° 30' W	245.0	176	S 07° 00' W	70.0	245	S 16° 15' E	225.0	304	S 74° 00' E	800.0						
57	S 96° 00' W	265.0	177	S 16° 30' E	65.0	246	S 0° 45' E	70.0	305	S 63° 50' E	1098.0						
58	S 17° 00' W	117.0	178	S 17° 58' W	40.0	247	S 87° 34' W	148.0	306	S 78° 00' E	913.44						
59	S 40° 20' E	205.0	179	S 41° 00' E	55.0	248	S 24° 10' E	435.0									
60	S 15° 00' W	100.0															

NOTE: Line is from

From Cor. bet E. & N.

C S 6633

B 3 OF B 3