

See F.M. 13055
" F.M. 18090
" G.F. 272
Changed to Canyon Drive Ord. 47200

CS 6649
A1 OF A2

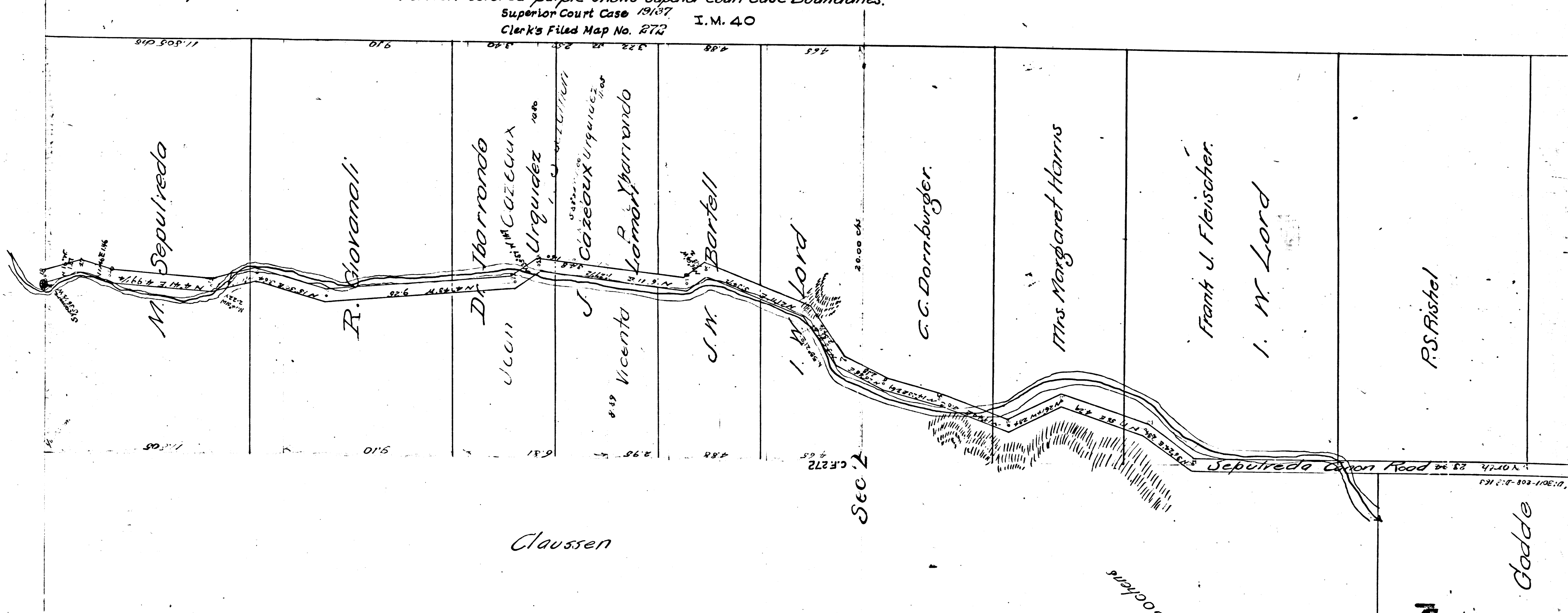
CANYON DRIVE
~~Sepulveda Canon Road~~

A branch of Franklin Avenue Extension
Cahuenga Road District

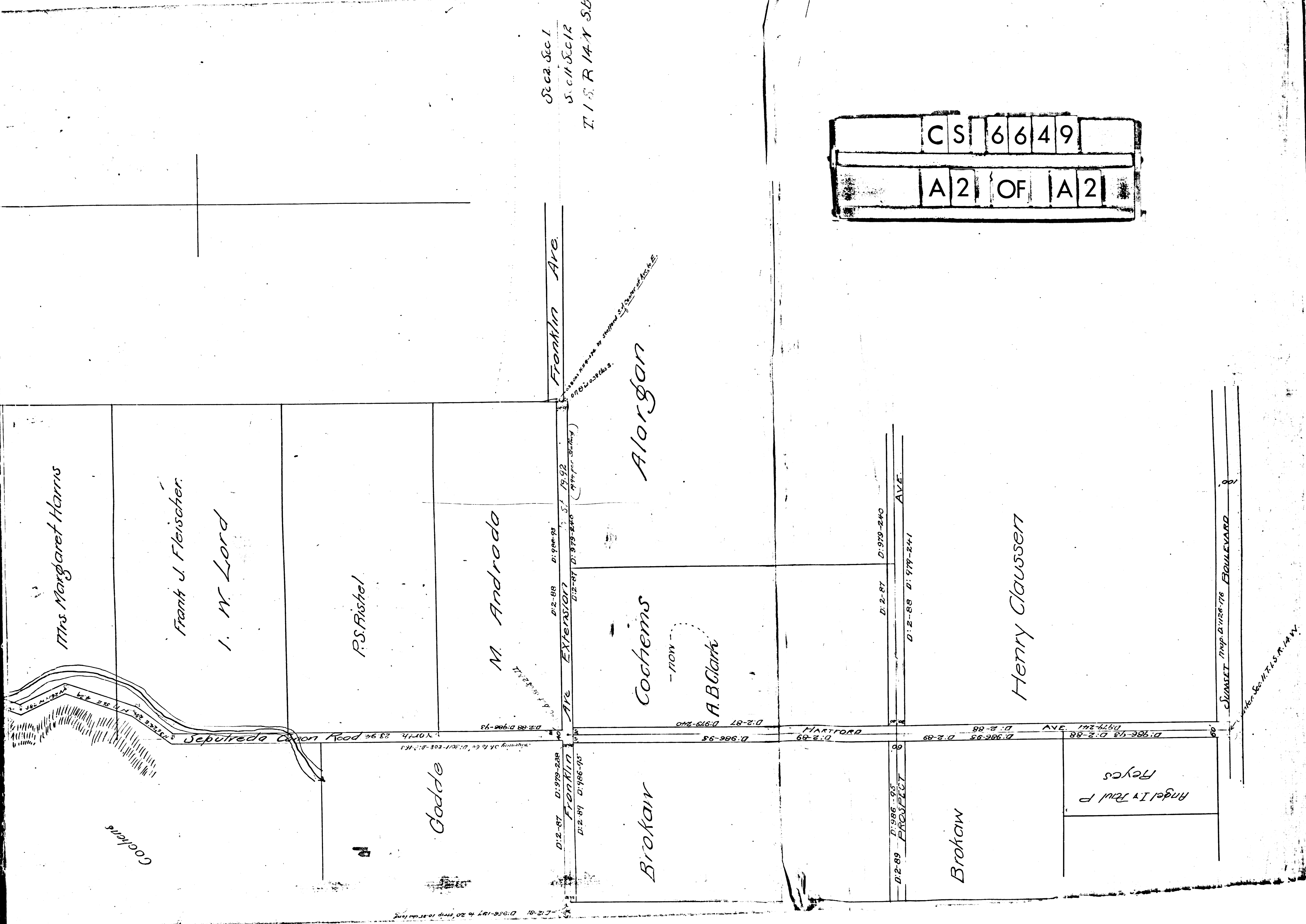
175-44.
February 1893
Road Book 16, page 20.
by A. R. Street
40' wide
County Surveyors Map No 6649

Scale 3, chs = 1 in.

Note: Portion colored purple shows Superior Court Case Boundaries.
Superior Court Case 19137 I.M. 40
Clerk's Filed Map No. 272



note measurements and names in red show later survey and partition
by order of Court



Sec 2, Sec 1
 Sec 11, Sec 12
 T.15. R.14. N. S.B.

CS 6649
 A2 OF A2

Mrs. Margaret Harris

Frank J. Fleischer

I. W. Lord

P.S. Rishel

M. Andrada

Glodde

Alorçan

Cochems

A.B. Clark

Brokaw

Brokaw

Henry Claussen

Reyes
 Angelia Fall P

SUNSET Map D:1126-176 BOULEVARD

Refer Sec 17.15 R.14 W.