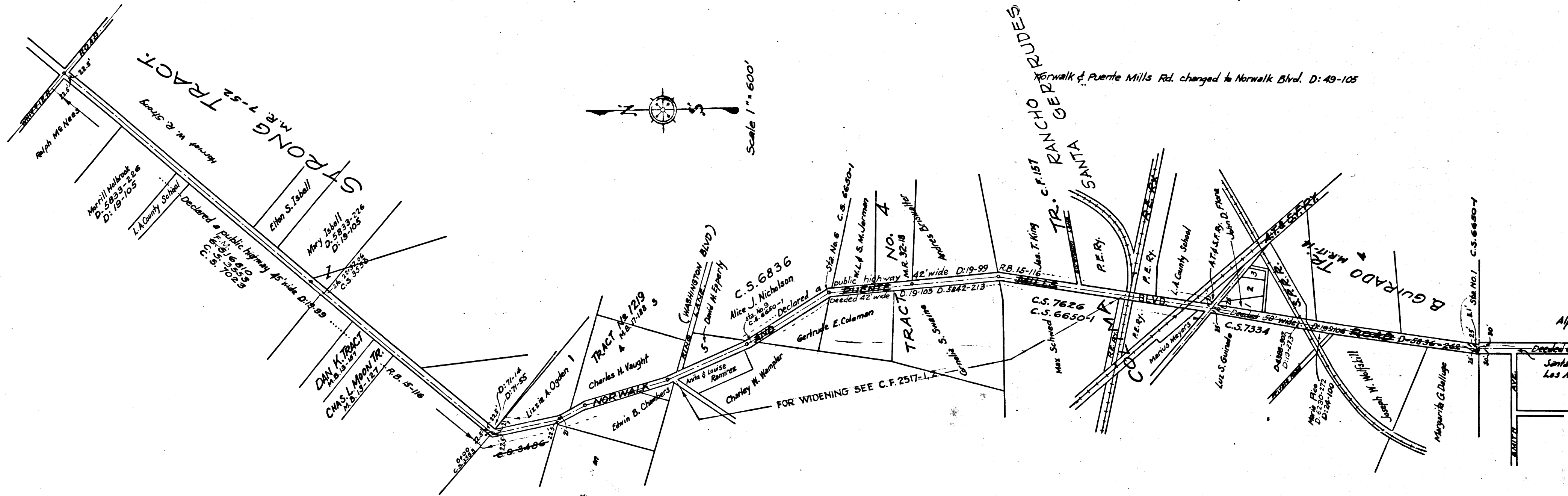


CS	6	6	5	0	-	1
A	2	OF	A	3		



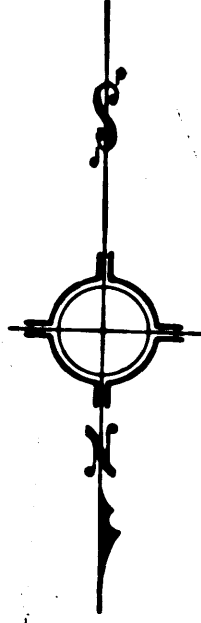
Scale 1" = 600'

Scale 1" = 600'

CS	6	6	5	0	-	2
A	1	OF	A	2		

Norwalk & Puente Mills Rd. changed to Norwalk Blvd. D: 49-105

FOR WIDENING SEE C.F. 2517-1



MAP OF **NORWALK & PUENTE MILLS ROAD** BLVD.

FROM **SOUTH LINE OF SECTION 6 T.35.R.11Y.S.B.&M.**

TO **LOS NIETOS & LA MIRADA ROAD**

DECEMBER 1916 J.E. ROCKHOLD COUNTY SURVEYOR  
SCALE 1"=200

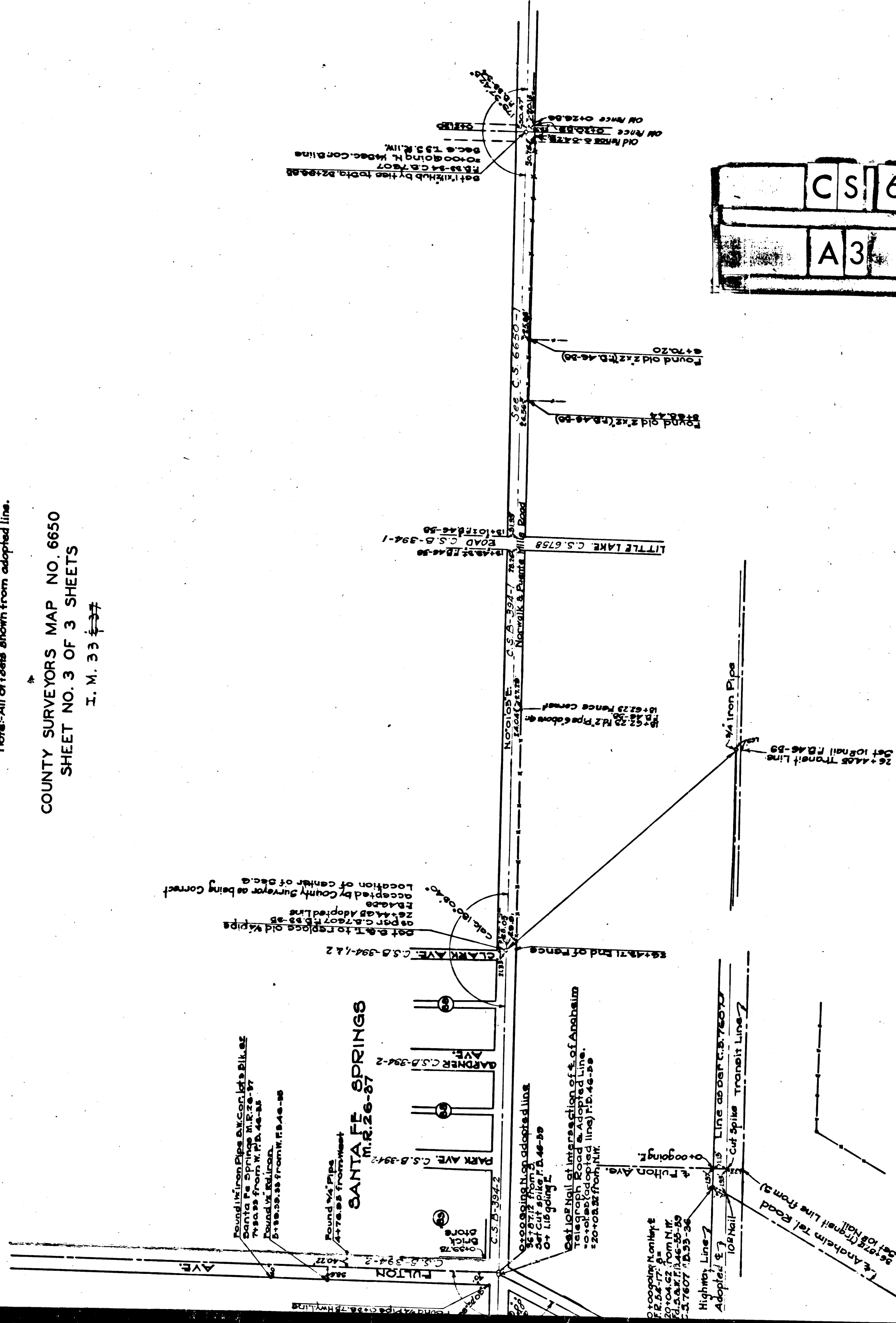
Surveyed under instructions of the Board of Supervisors, per order dated April 20, 1915.  
Bearings based on the bearing of Anaheim Telegraph Road as shown on County Surveyor's Map No 7607.

Field Work by Comly - April 1915.  
Office Work by Cobb - Dec. 1916.  
Checked by Marsh - Jan. 1917.  
F.D. 46-54 to 63.

Note - All offsets shown from adopted line.

COUNTY SURVEYOR'S MAP NO. 6650  
SHEET NO. 3 OF 3 SHEETS

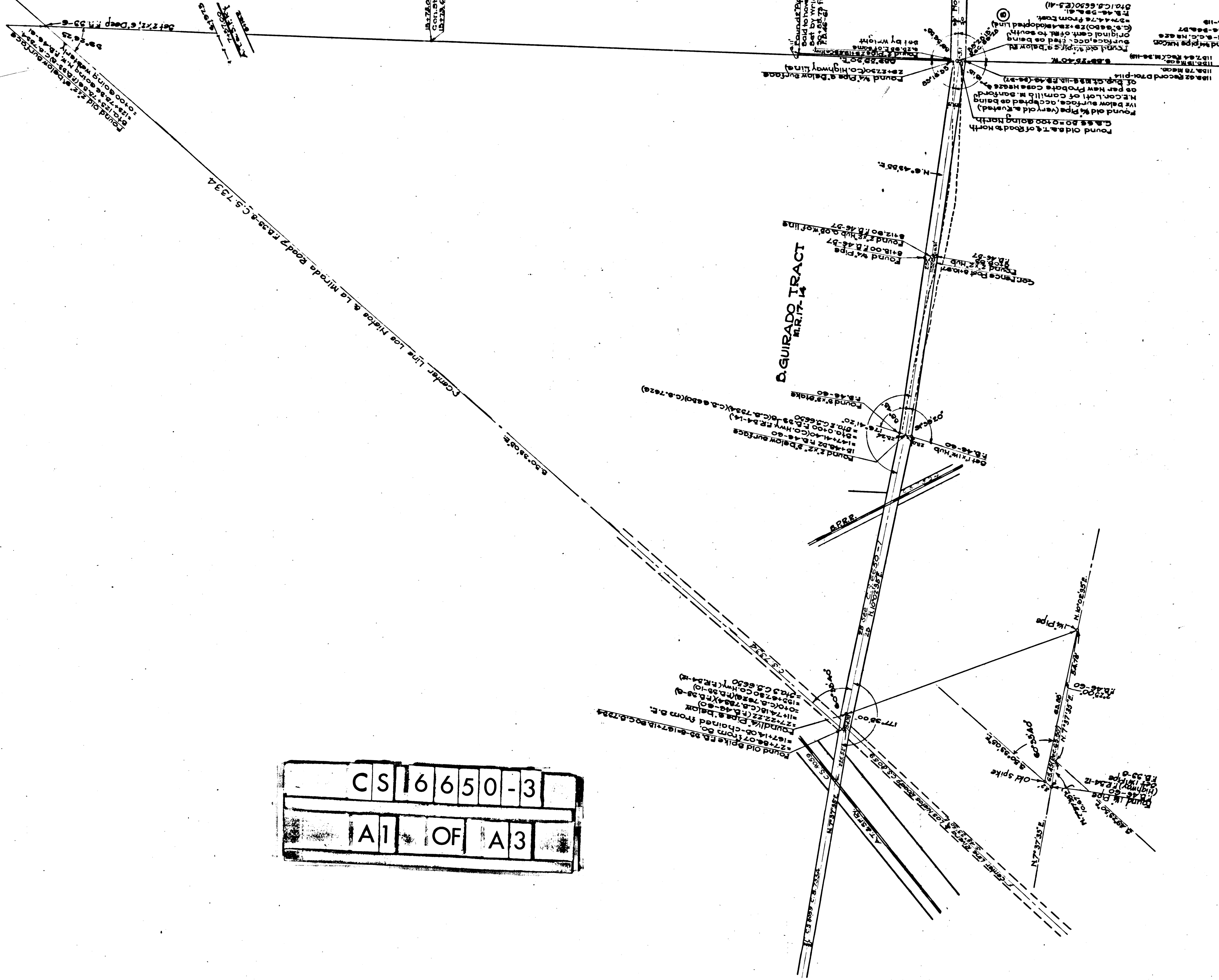
I. M. 33



CS 6650-3  
A3 OF A3

NOTE: This Photact Tracing made October, 1933 from the old worn tracing cloth original map which has been discarded.  
Retouched by R.J. Black, November, 1933





CS	6	6	5	0	-	3
A	1	OF	A	3		