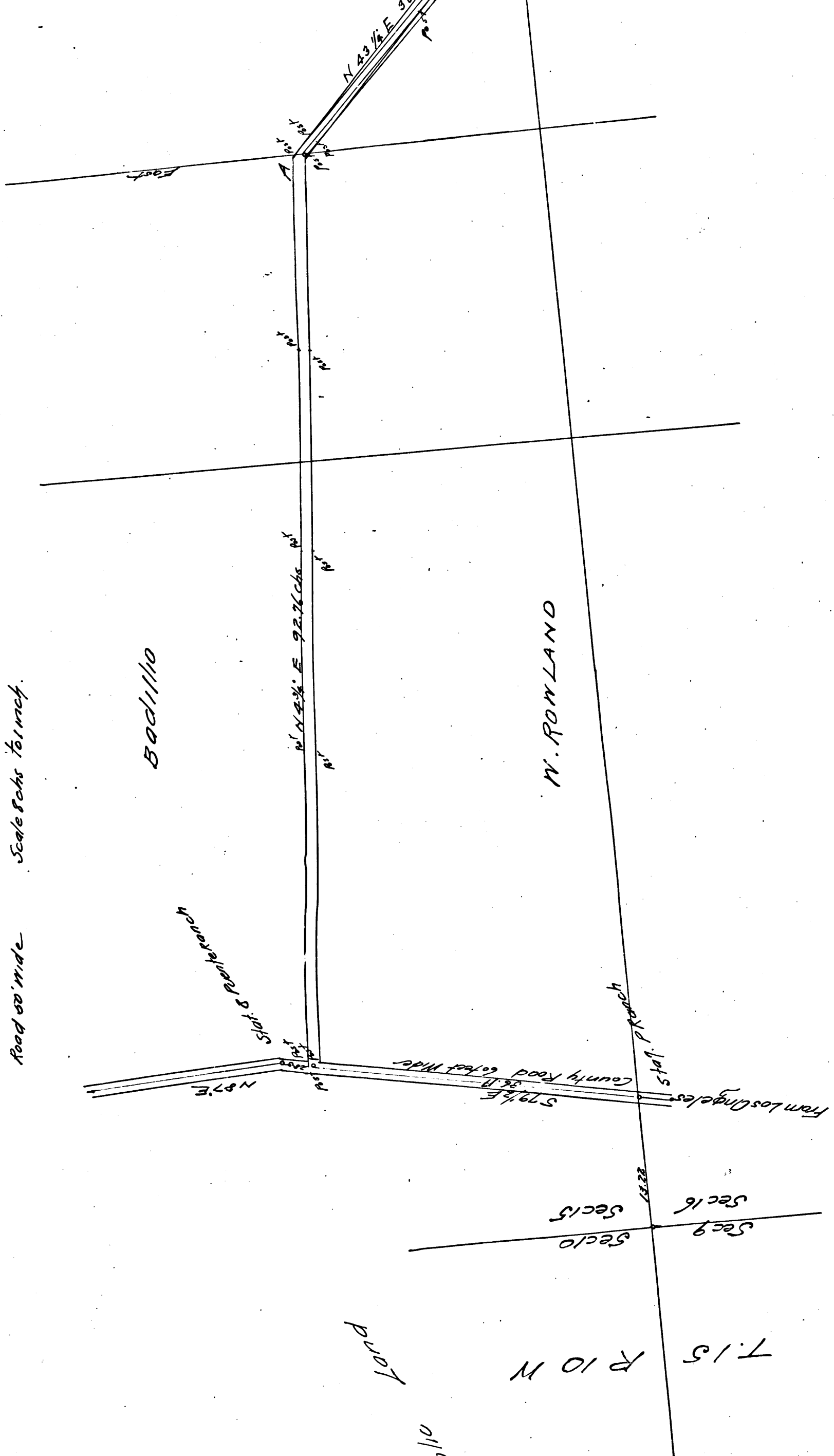


Puente Depot Road

Road 80' wide Scale Sects 10mch.

5001110

W. ROWLAND



pub 1/10

T. 15 R. 10 N

Sec 9
Sec 10
Sec 15
Sec 16

pub 1/10

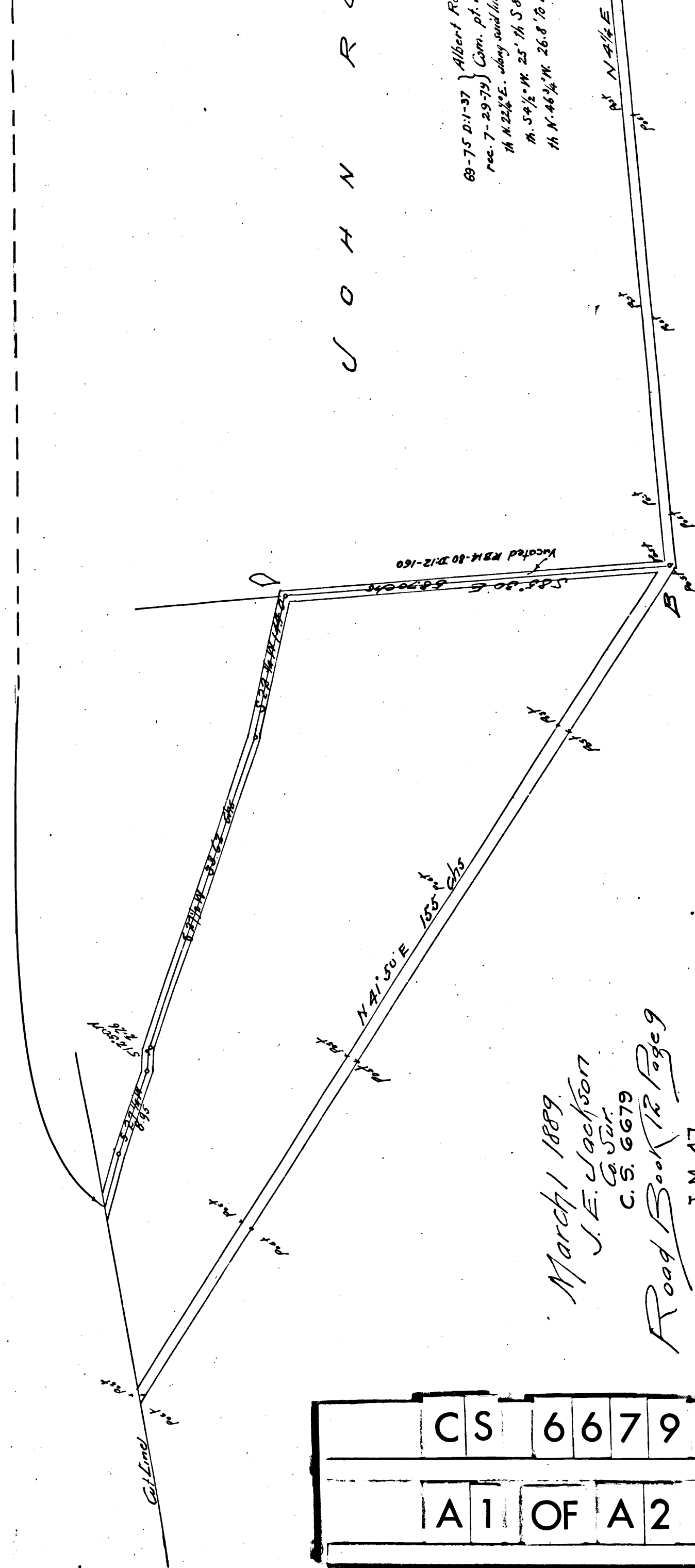
CS	6	6	7	9
A	1	OF	A	2

March 1 1889
 J. E. Jackson
 Co. Sur.
 C. S. 6679
 Road Book 12 Page 9
 I. M. 47

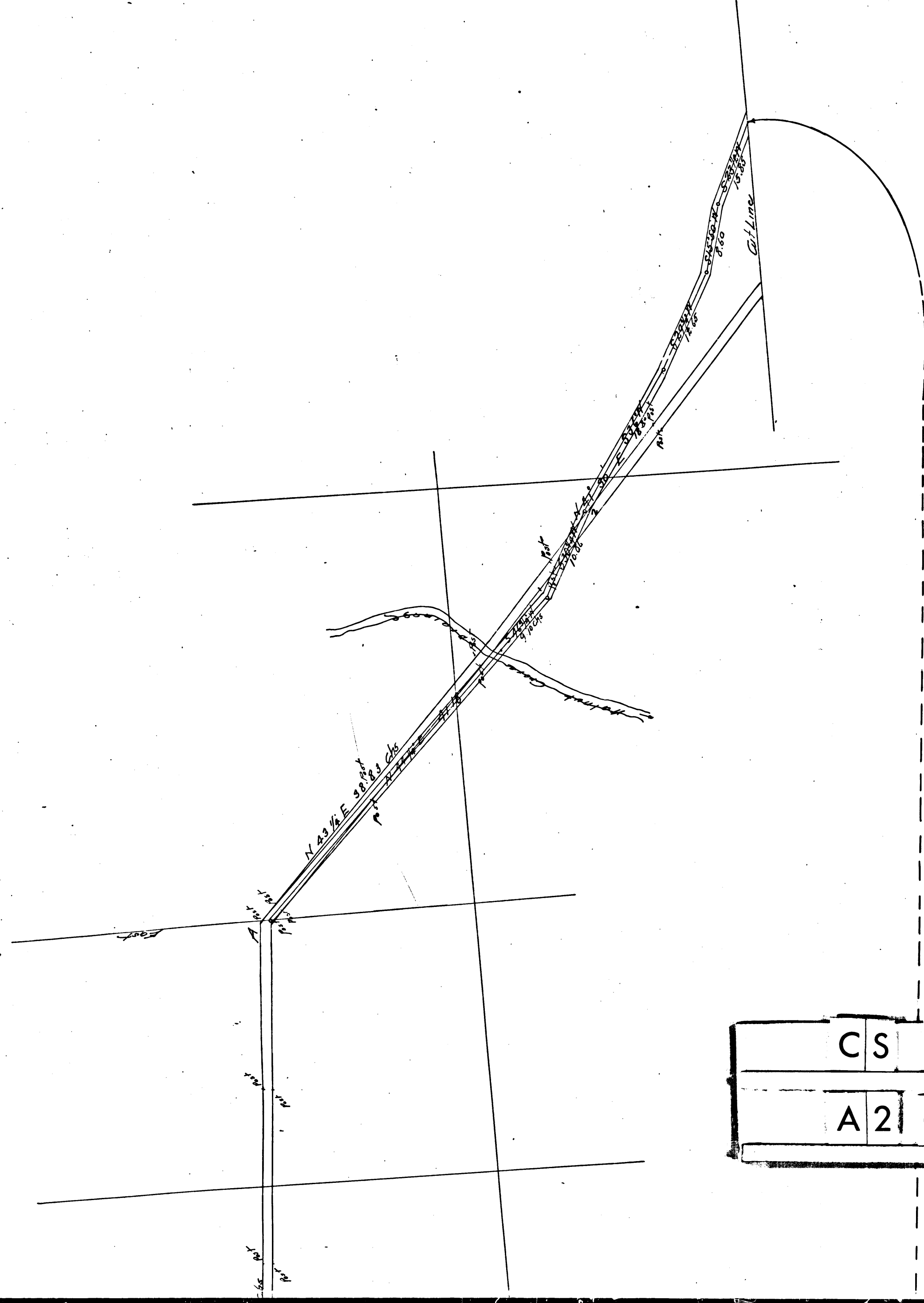
J O H N R O

63-75 D:1-37 } Albert R.
 rec. 7-29-79 } Com. pt.
 14 N. 22 1/2° E. along road 1/4 mi.
 14 N. 59 1/2° W 25' 14 S 8
 14 N. 46 1/4° W 26.8' 10

N 1/4 E



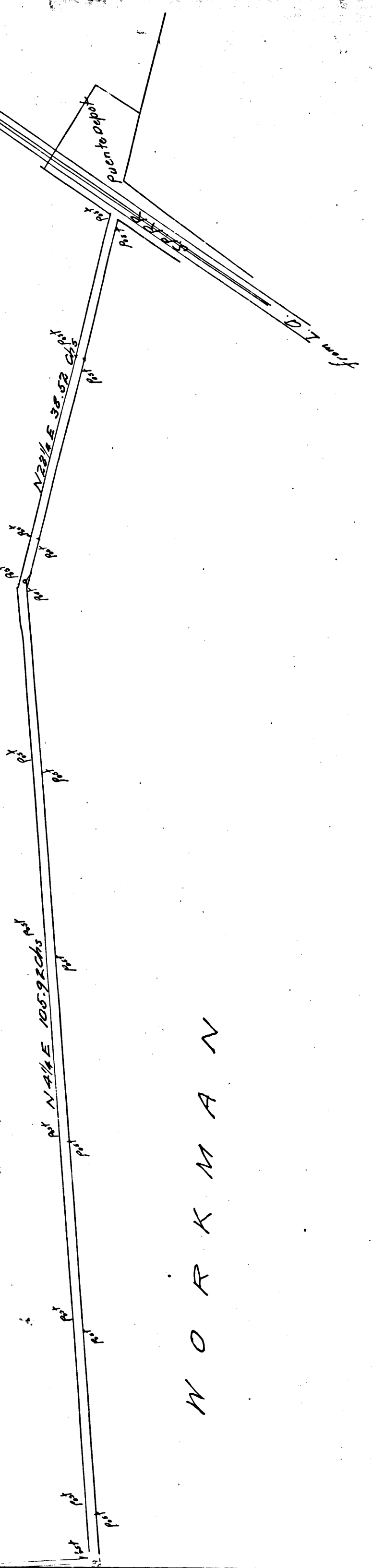
N O R K M A



CS	6	6	7	9
A	2	OF	A	2

J O H N R O N L A N D

69-75 D-1-37 } Albert Rowland, C.M. Rowland, Victoria Rowland.
 rec. 7-29-73 } Com. pt. N. line Dept. Gr. being in line between Minnami & Rowland
 Th. N. 22 1/2 E. 40.00' to 105.92' E. 105.92' Th. S. 65 1/2 E. 33.00'
 Th. S. 4 1/2 W. 25' Th. S. 85 1/2 W. 39.00' Th. S. 84 1/4 W. 105.92' Th. S. 22 1/2 W. 38.32'
 Th. N. 46 1/2 W. 26.8' to beg.



W O R K M A N