

COMIDA SURVEYOR MAP NO. 6683

6683 COUNTY SURVEYOR

NORMANDIE AVE. Extension of the Tomlinson Road Wilmington Road Dist.

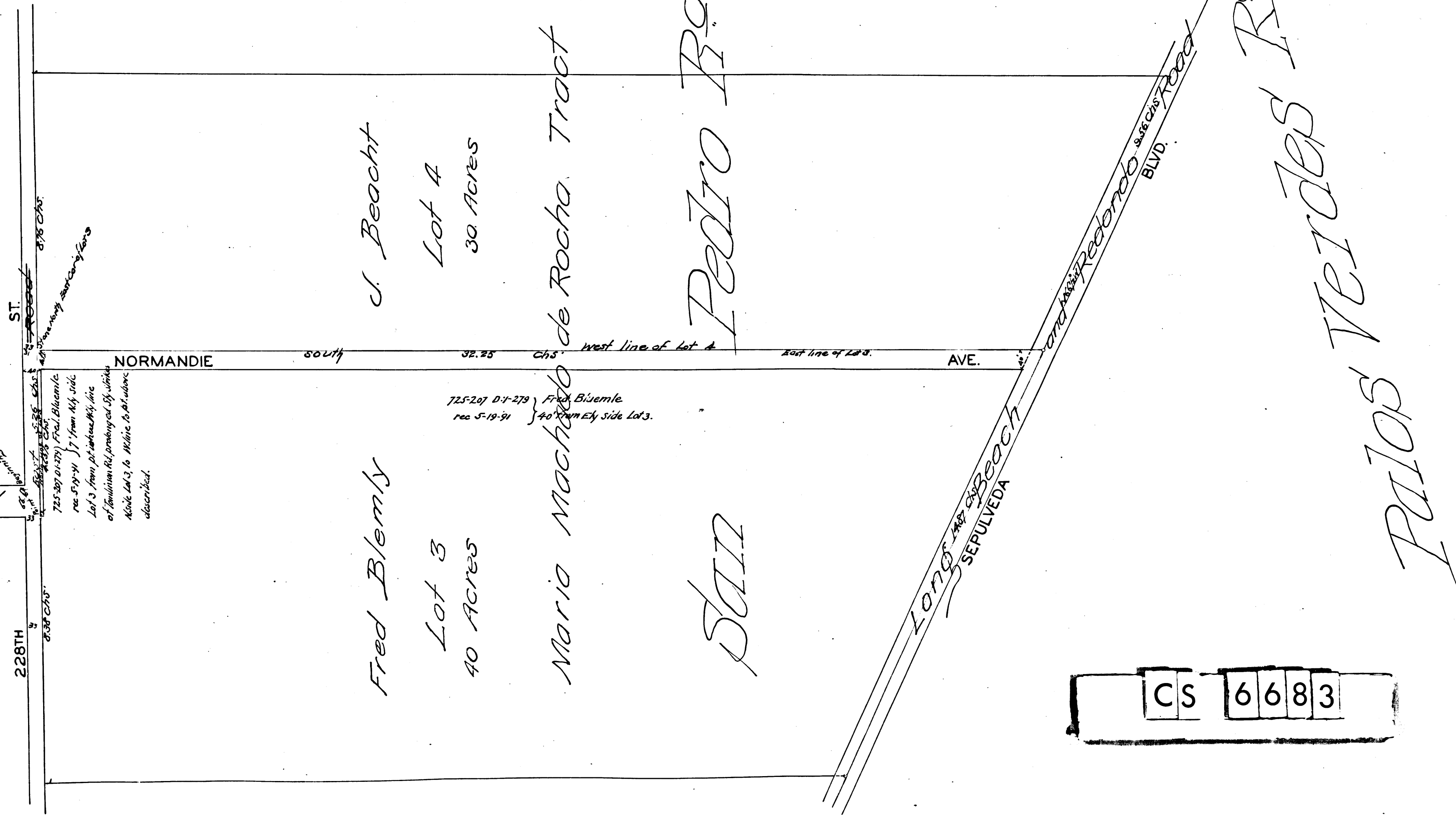
Long Beach + Redondo Road changed to Sepulveda Blvd. D: 49-202

I.M. 28

Road Book 15 Page 8.

Surveyed April 9th 1891
by Harry F. Stafford
County Surveyor.
C. S. 6683

Scale 2 chs to one Inch.



CS 6683