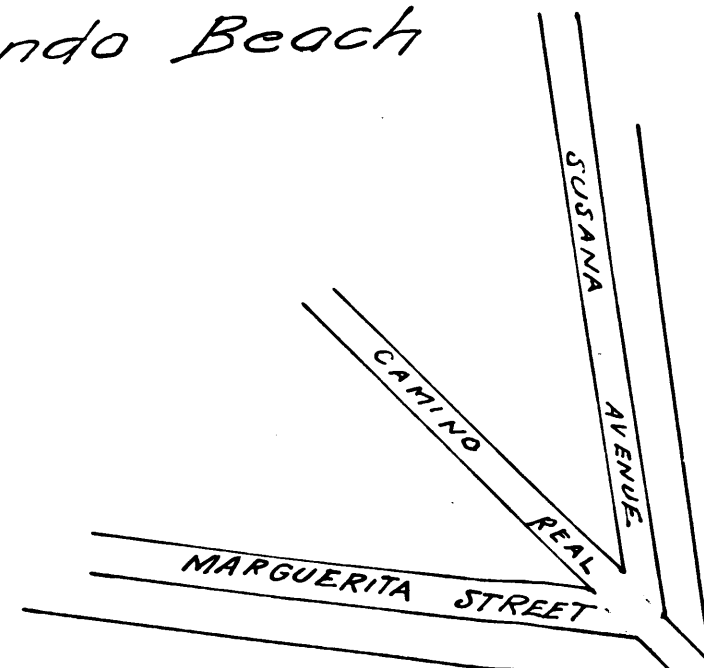


RANCHO

Townsite
of Redondo Beach



Susana
Dominguez

715-86 D: 2-170 } Susana D del Amo et conj.
rec 3-25-91 } 25' off s. of 830 Acs in Dunc Tracts.

SAN

O. J. Dominguez de G...

SEPULVEDA

SEE CSB 312-2 N 84° 43' W

133.80 chs

J. G. Downey

L. C. Lane

The final decree of partition in Sup Ct Case No 11515 (see DM: 734-171) rec'd
extend only to the south line of road.

RANCHO

Narbourne and Neston

CS	6688
A1	OF A4

C. QUANDT 176-106 D. 1717 rec. 3-30-91	C. QUANDT 23 Chas. Quandt 1/4 25' of E 7/8 Ac n 1/2 Lot 22 1/4 25' of n 1/2 Lot 22	J. H. FIER 24
2	22	TRACT 25
3	21	26
4	PARC 20	27
5	19	28
MEADOW 6	LOS 18	29
7	17	30

PALOS

SEPULVEDA

BLVD.

WILLOW ST. TO CAMINO REAL

Long Beach Redondo Beach Road

Width of Road 50 ft. 25 ft. Each side of Centre Line
as surveyed in October 1890
by Harry F. Stafford

County Surveyor.

Scale 10 chains to one Inch

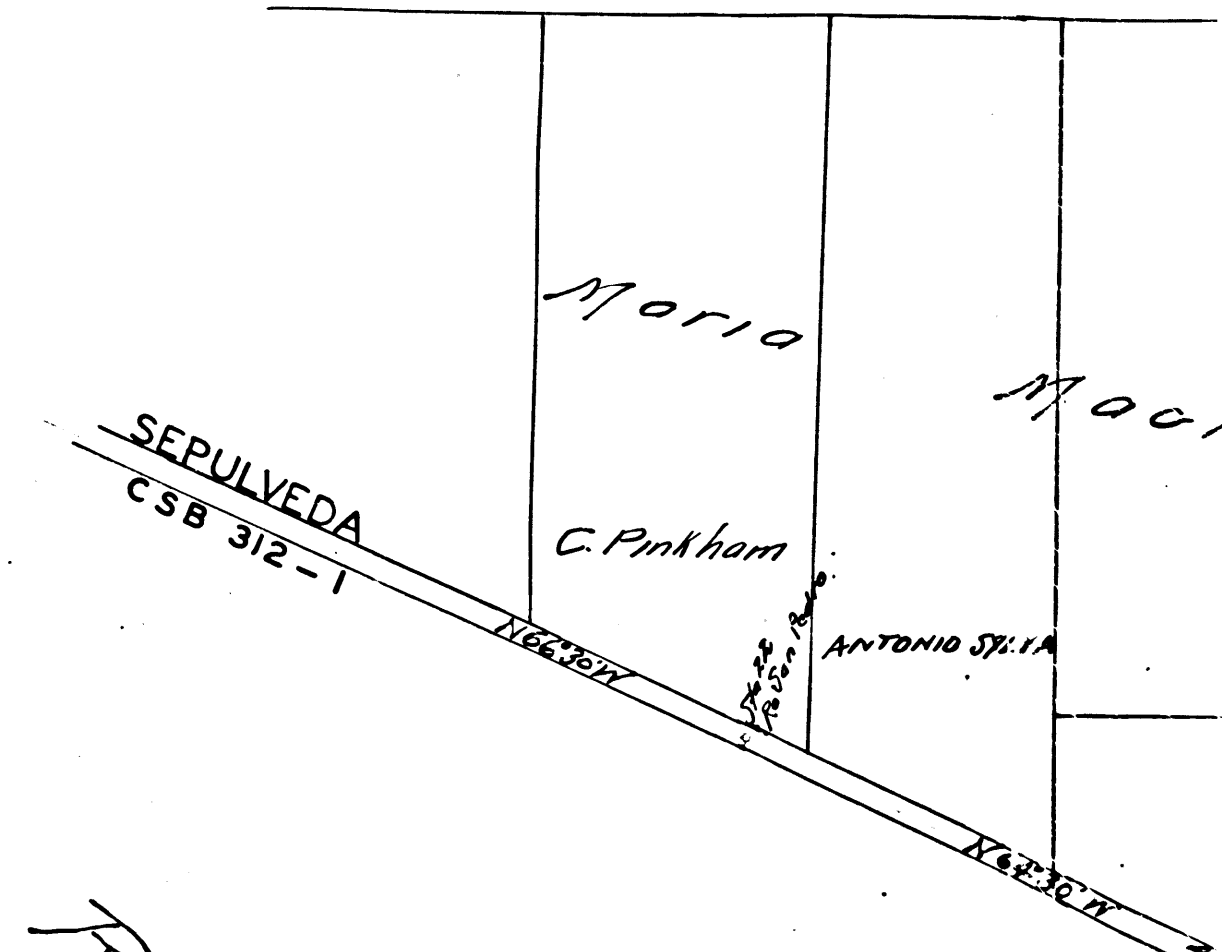
Road Book 14 Pages 16 & 17.

See R. B. 4-188

C. S. 6688

I. M. 28 & 25

For Long Beach & Redondo Road changed to Sepulveda Blvd. D: 49-202



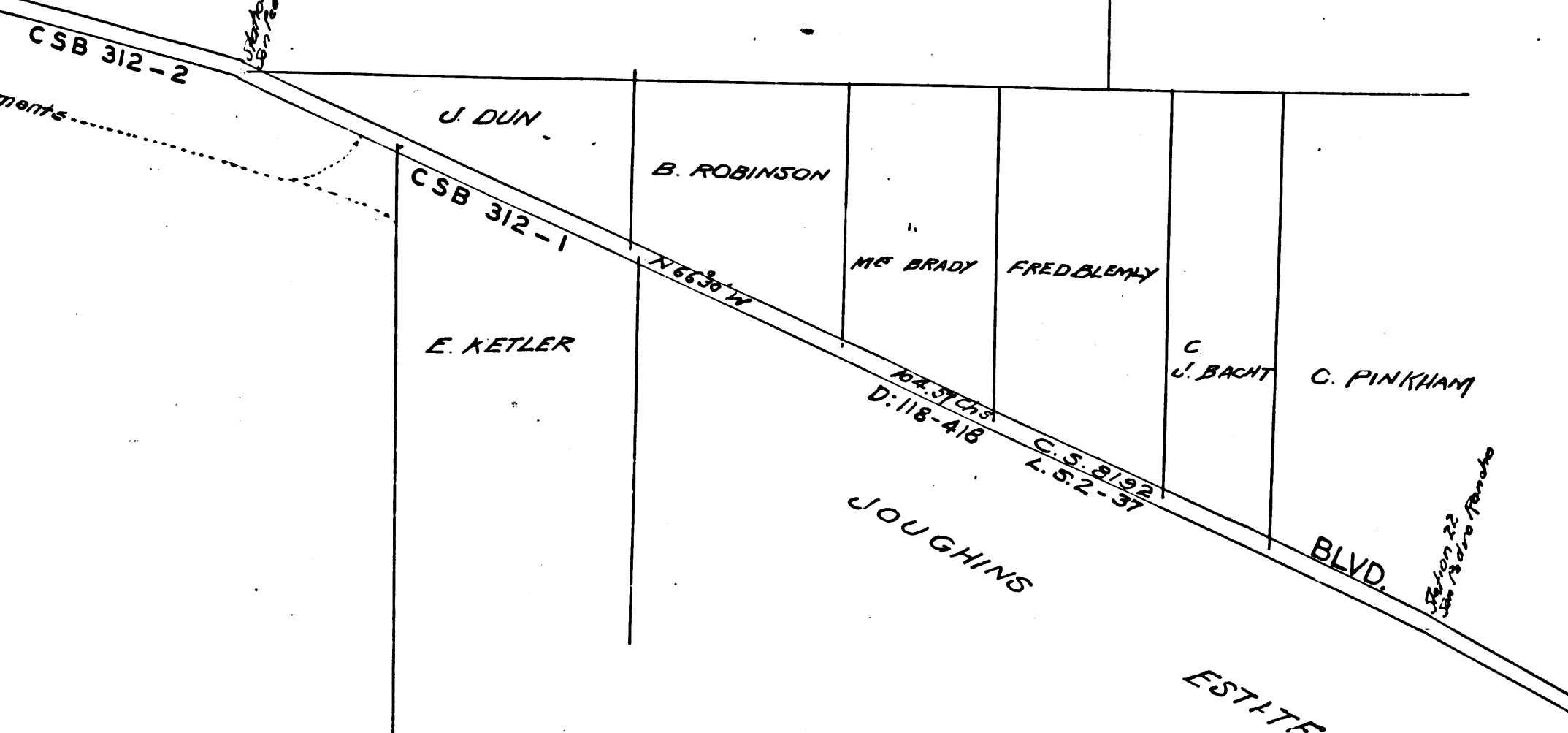
Dominguez de Guyer

PEDRO

JOUCHINS
ESTATE
RANCHO LOS PALOS VERDES

N 75° 42' W
133.13 CHS.
Sup. Ct. Case No. 11515 (see DM: 794-171) recognizes this 50 ft. road and the allotments
of road.

Irme and Weston



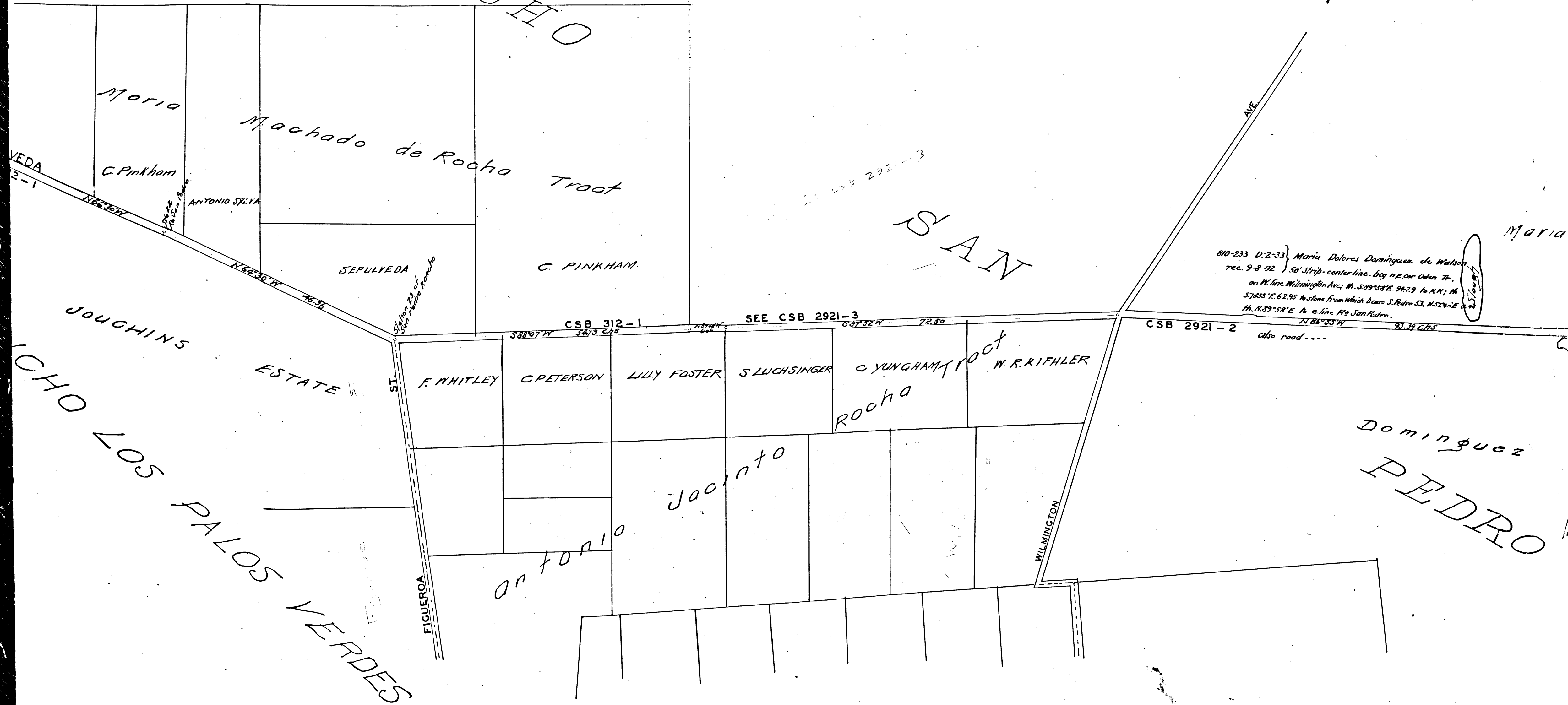
PALOS

VERDES

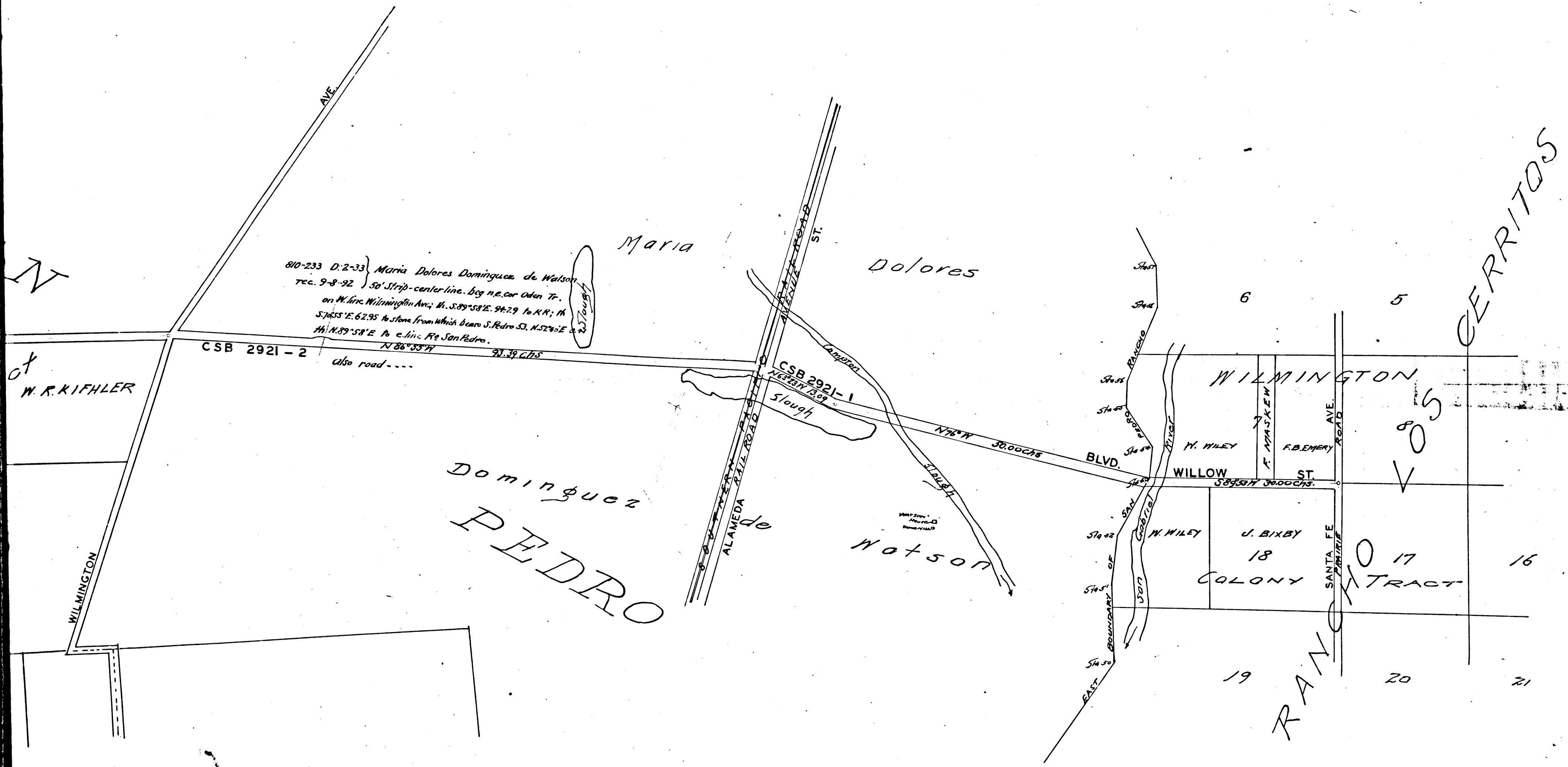
CS	6	6	8	8
A	2	OF	A	4

RANCHO

SAN



CS	6688
A3	OF A4



810-233 D:2-33 } Maria Dolores Dominguez de Watson
 rec. 9-8-92 } 50' Strip-center line. beg. n.e. cor. Oden Tr.
 on W. line Wilmington Ave; th. S. 89° 58' E. 94.29' to R.R.; th.
 S. 76° 55' E. 62.95' to stone from which bears S. Pedro St. N. 52° 40' E. 3.2'
 th. N. 89° 58' E. to e. line. Re San Pedro.
 N 86° 35' W 91.39 chs

CS 6688
 A4 OF A4