

SANTA FE AVE.

~~Perris Road~~

Long Beach Road Dist

Aug. 1892. by Harry F. Stafford
Co. Sur.

I. M. 30

Scale 6ch=1in. Width of road 40'

County Surveyors Map No 6773

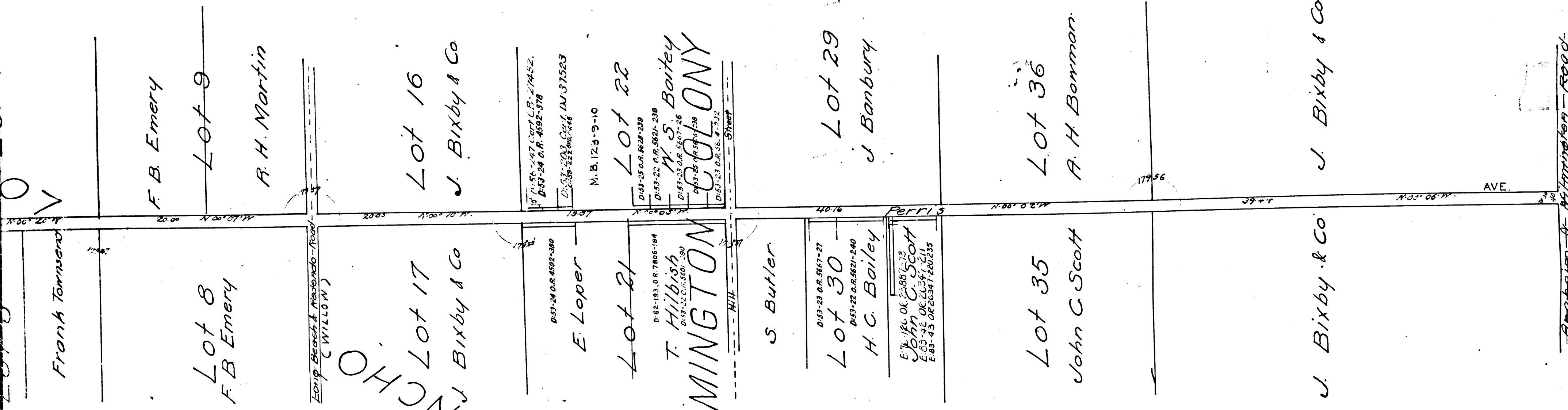
Filed Sept 1, 1892

Road Book 16-13

See R 5-7

See D: 3108-127 D: 10-78

Perris Road from Willow (Long Beach & Redondo Rd) to Anaheim changed to Perris Ave.
D: 25-172 Ord. B. 422
Perris Road changed to Perris Avenue D: 51-215, Res. HPC-2439.



RANCHO
WILMINGTON

COLONY TRACT

CS 6773
A2 OF A2