

CO

Second St

Providencia

Verdugo

Canon Wash

Concord Ave.

State St.

Commercial St.

Front St.

Wesley Fair

Glendale

Nard St.

47.43 Ch.

N. 42° 05' W. 102.3'

20° 52'

Water tank

Dent

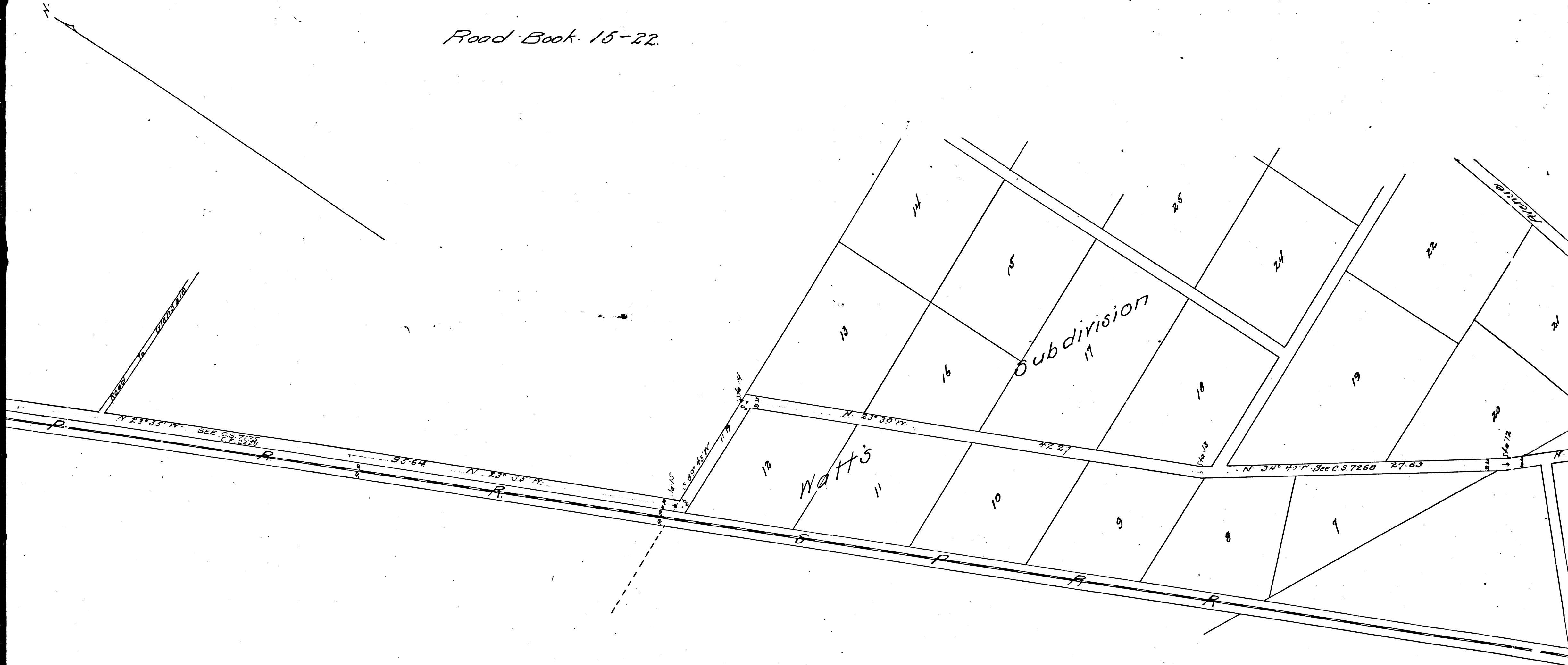
Section mark

For center of road 20' dia.

The hole for center of road 20' dia.

CS	6783
A1	OF A4

Road Book 15-22



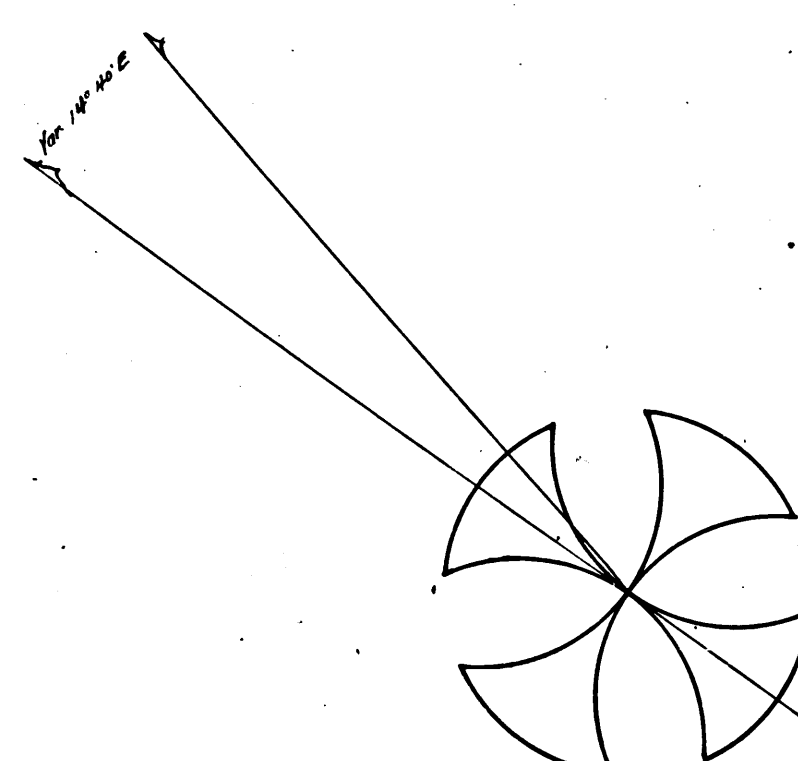
CS	6783
A 2	OF A 4

Portion of
San Fernando

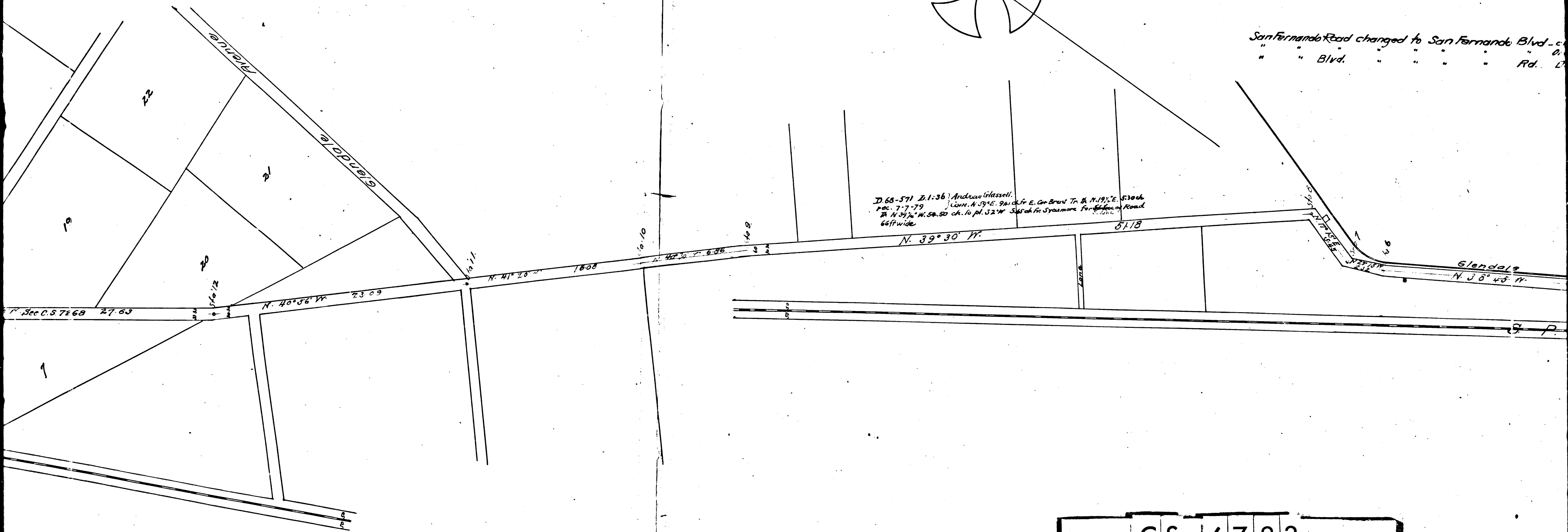
Feb 1891 by

Scale 5 ch =
County Surveyors
I. N. 40

San Fernando Road changed to San Fernando Blvd -
" " Blvd. " " " " Rd. D.



D. 68-571 2.1.36 Andrew Glassell.
Dec. 7-7-79 (cont. N. 39° E. 94' 0" to E. Cor. Brun. Tr. B. N. 19° E. S. 30 ch.
N. 39 1/2° W. 54.50 ch. to pt. S 27° W 54 ch. for Sycamore for Station of Road
66 ft wide



CS	6783	
A3	OF	A4

Portion of the
San Fernando Road

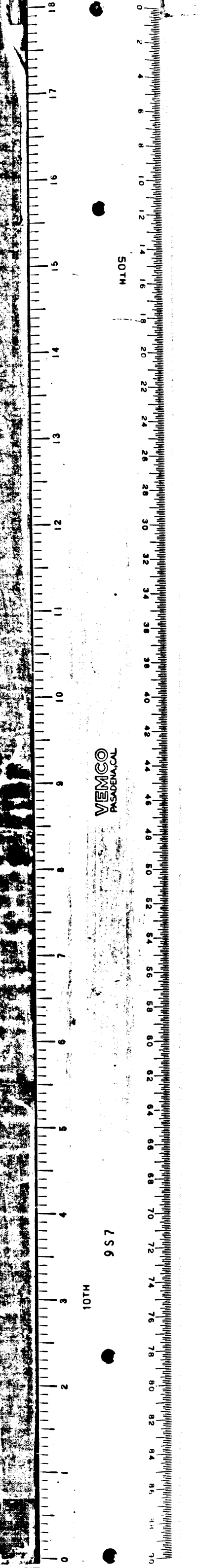
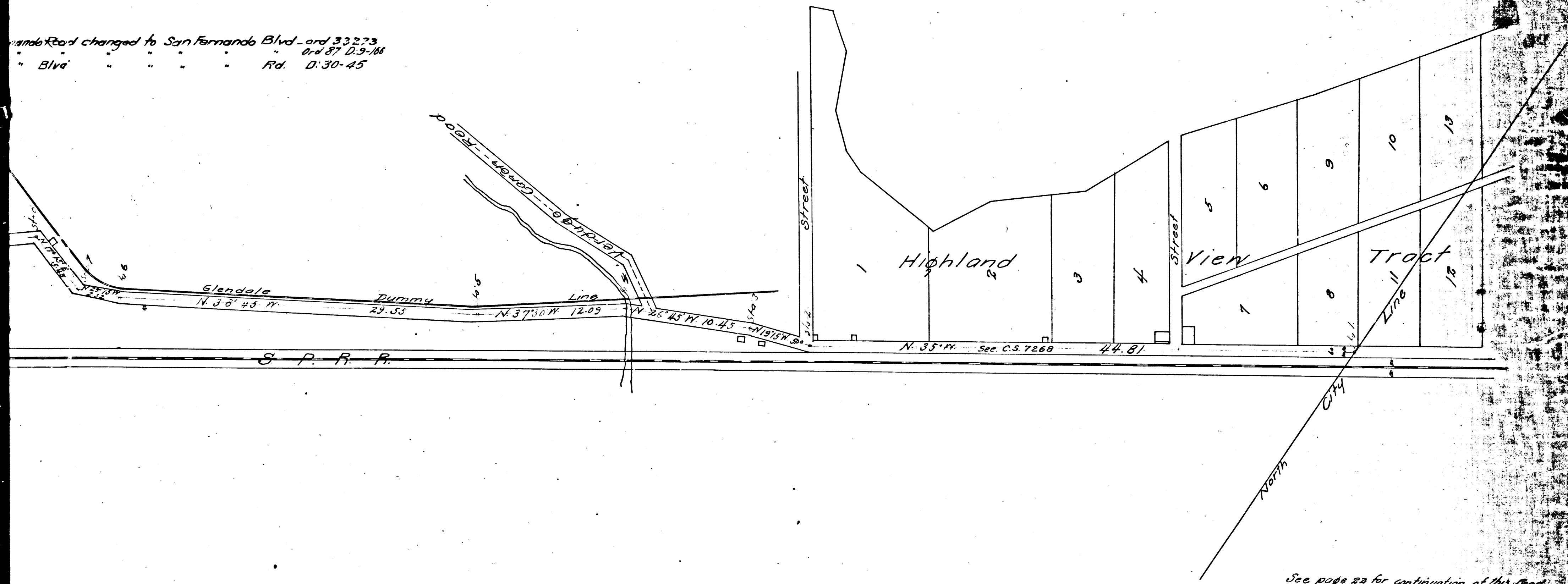
Feb 1891 by Harry F. Stafford
Co. Sur.

Scale 5 ch = 1 in.
County Surveyors Map No 6783

I.M. 40 E 41

Filed Feb. 28 1891
Road Book 15-3

Glendale Road changed to San Fernando Blvd - ord 33273
" Blva " " " " Rd. D: 30-45



See page 22 for continuation of this tract.

CS	6783
A 4	OF A 4