



# COUNTY ROAD

FROM

LOS ANGELES TO ANAHEIM

# ANAHEIM TELEGRAPH ROAD

COUNTY SURVEYORS MAP NO. 6789

SCALE: 1" = 10 CHS.

BY Frank Lecourreur  
CO. SURV.

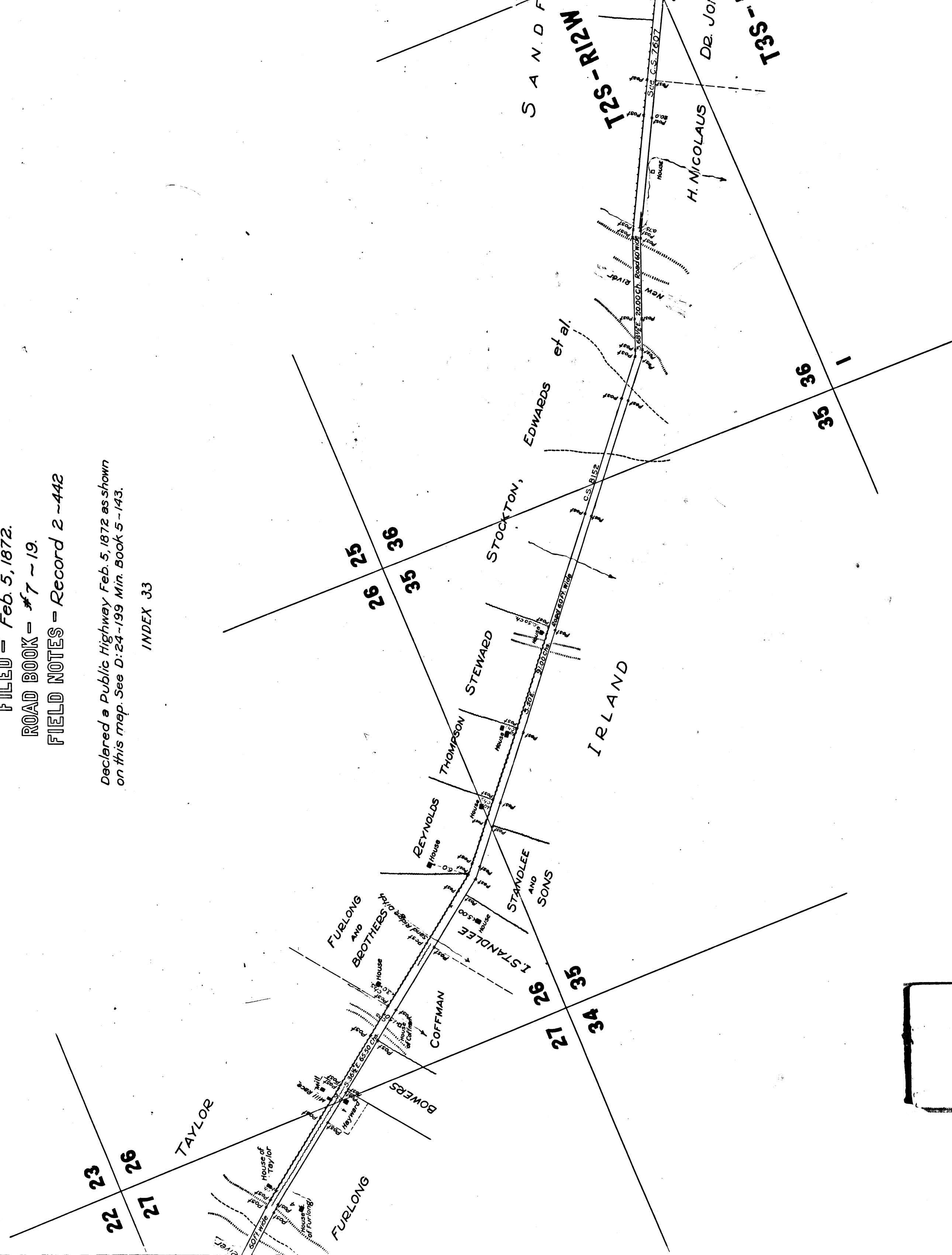
FILED - Feb. 5, 1872.

ROAD BOOK - #7-19.

FIELD NOTES - Record 2-442

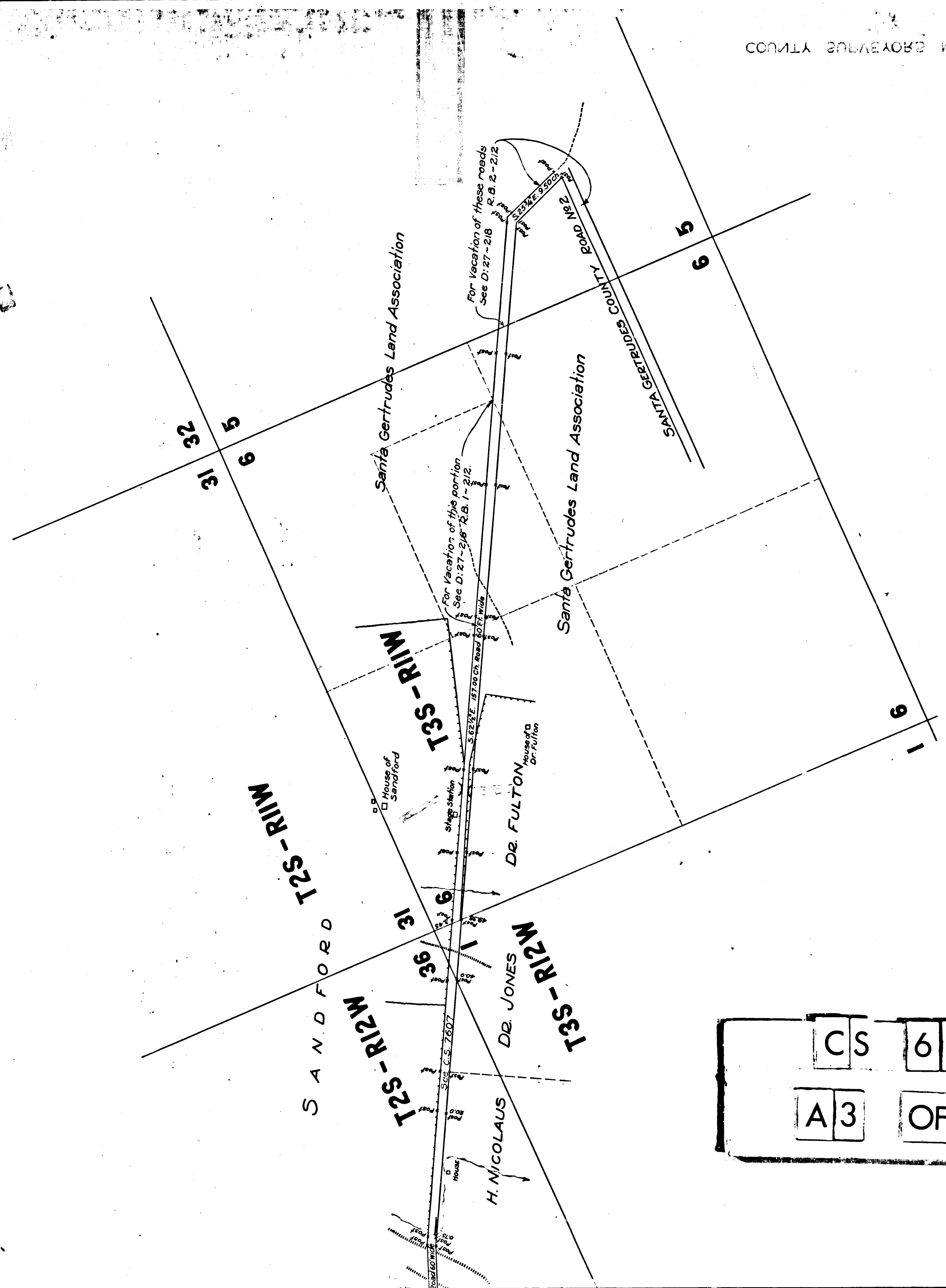
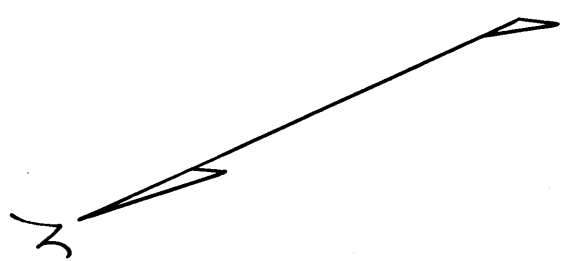
Declared a Public Highway Feb. 5, 1872 as shown  
on this map. See D:24-199 Min. Book 5-143.

INDEX 33



CS	6	7	8	9
A	2	OF	A	3

ROAD



C	S	6	7	8	9
A	3	OF	A	3	