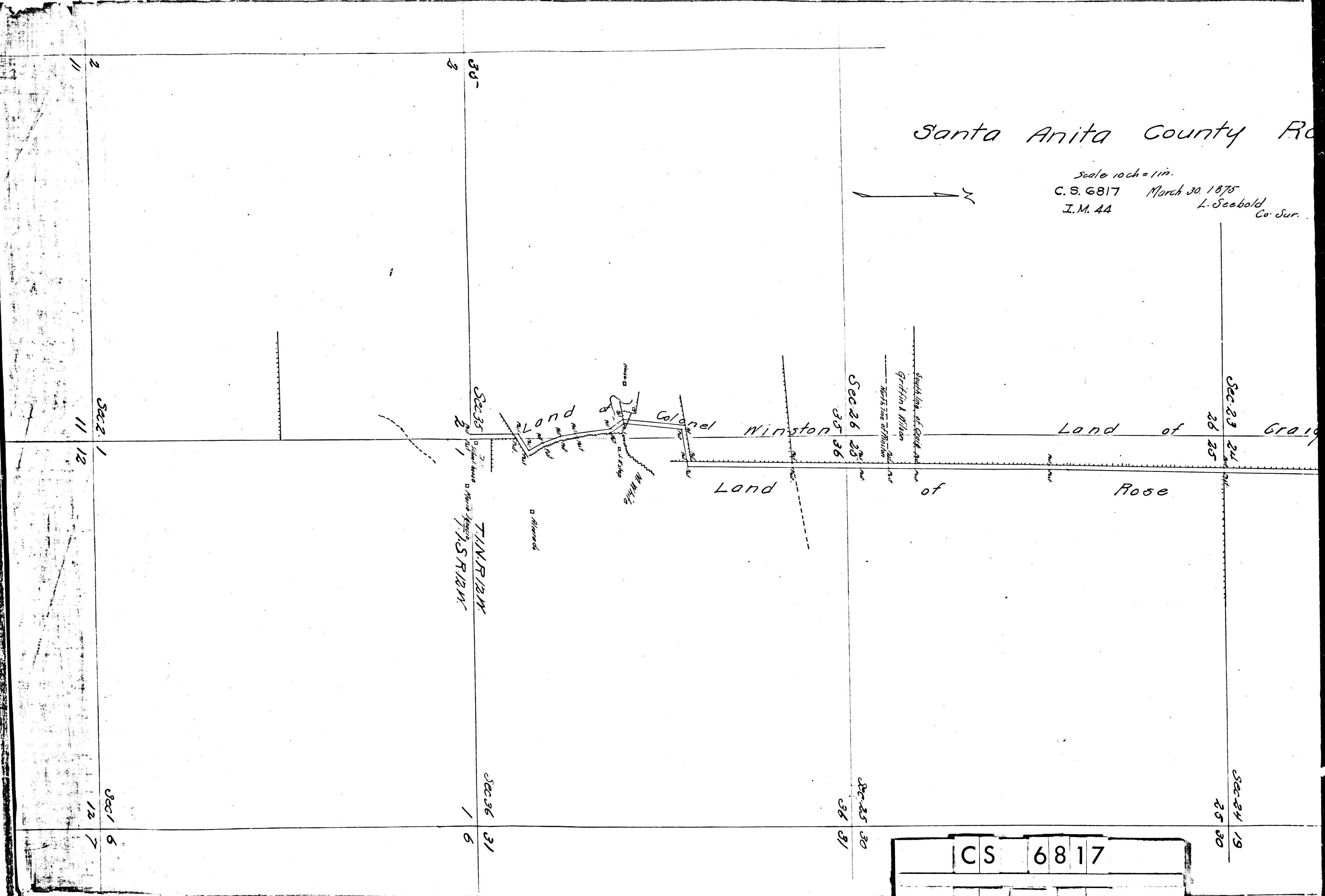
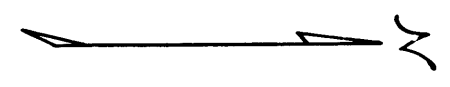


Santa Anita County Ro

scale 1 inch = 1 mi.
C.S. 6817 March 30, 1875
I.M. 44 L. Seebold Co. Sur.

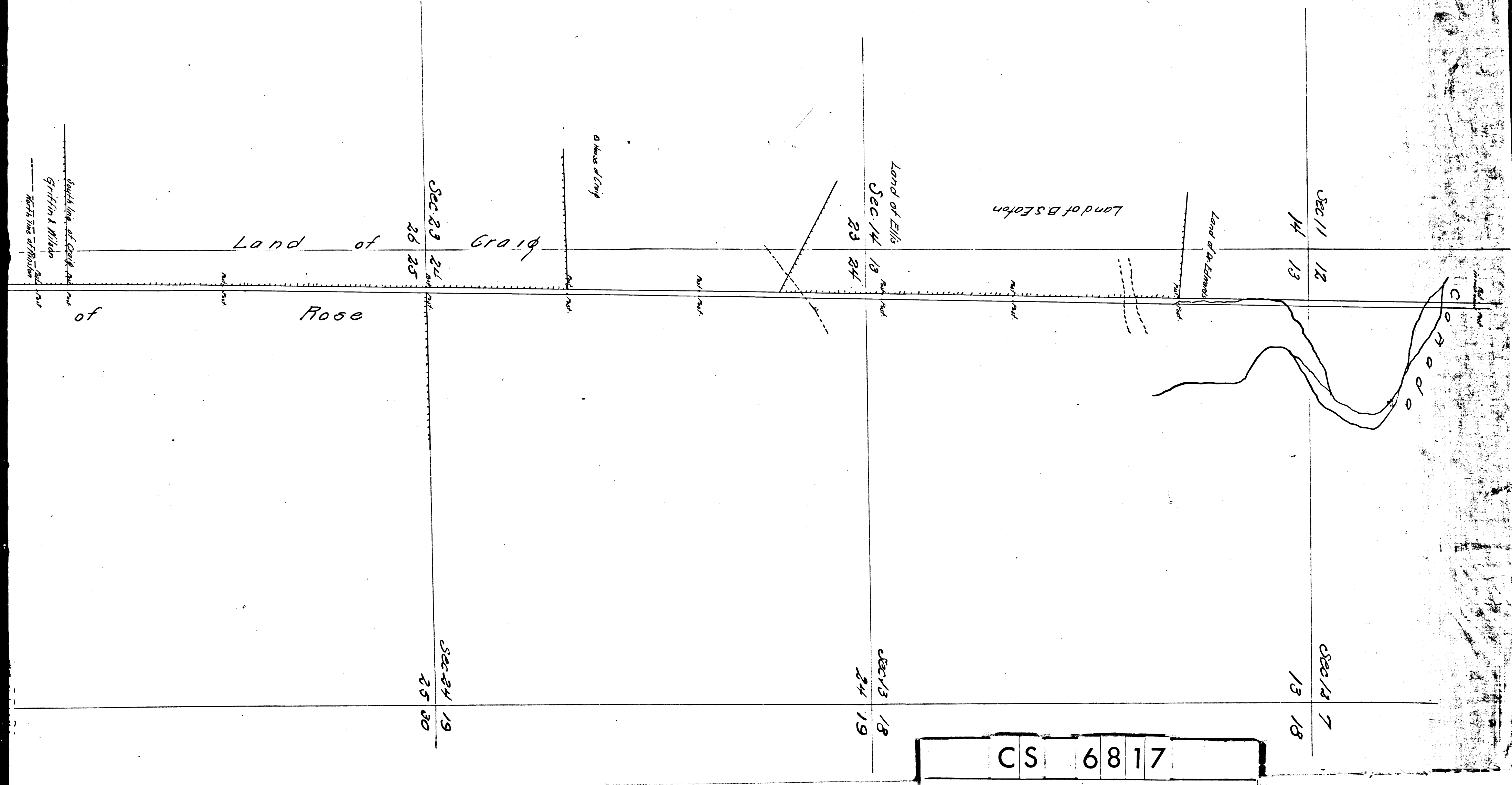


CS 6817
A1 OF A2

Santa Anita County Road

Scale 10 ch = 1 in.
 C. S. 6817 March 30, 1875
 I. M. 44 L. Seebold Co. Sur.

Filed April 5 1875
 Road Book 3-11.



C	S	6	8	1	7
A	2	O	F	A	2