

MEMCO
MEMORANDUM
957
10TH
50TH

Keefe
Bradbury Est

Mountain Ave

Central Ave. Extension.
Duarte Road District
Los Angeles, County California
Surreyed under instructions from the Hon. Board
of Supervisors - Dec. 31, 1894

by A. R. Street
Co. Sur.
C. S. 6910

Scale 100' to one inch

I. M. 46 Filed Jan. 5, 1895

J. A. Foshay

John P. Dunn

Phelps

Mary C. Deacon 20'
D: 1315-193 D: 2-258

D: 29-183 Doc #16286
D: 29-183 Doc #16287
Sec. C. S. 1103

D: 29-181 O. R. 230-58

Central Ave. West 26546 Extension

D. H. Ettien
11.20' D: 1315-194 D: 2-258

17.20' D: 1338-84 D: 2-260

17.20' D: 1337-63
D: 2-261

J. W. Keefe

Studebaker

Johnson

CS	6910
A1	OF A2

Central Ave. Extension.
 Duarte Road District
 Los Angeles, County California
 Surveyed under instructions from the Hon. Board
 of Supervisors - Dec. 31, 1894

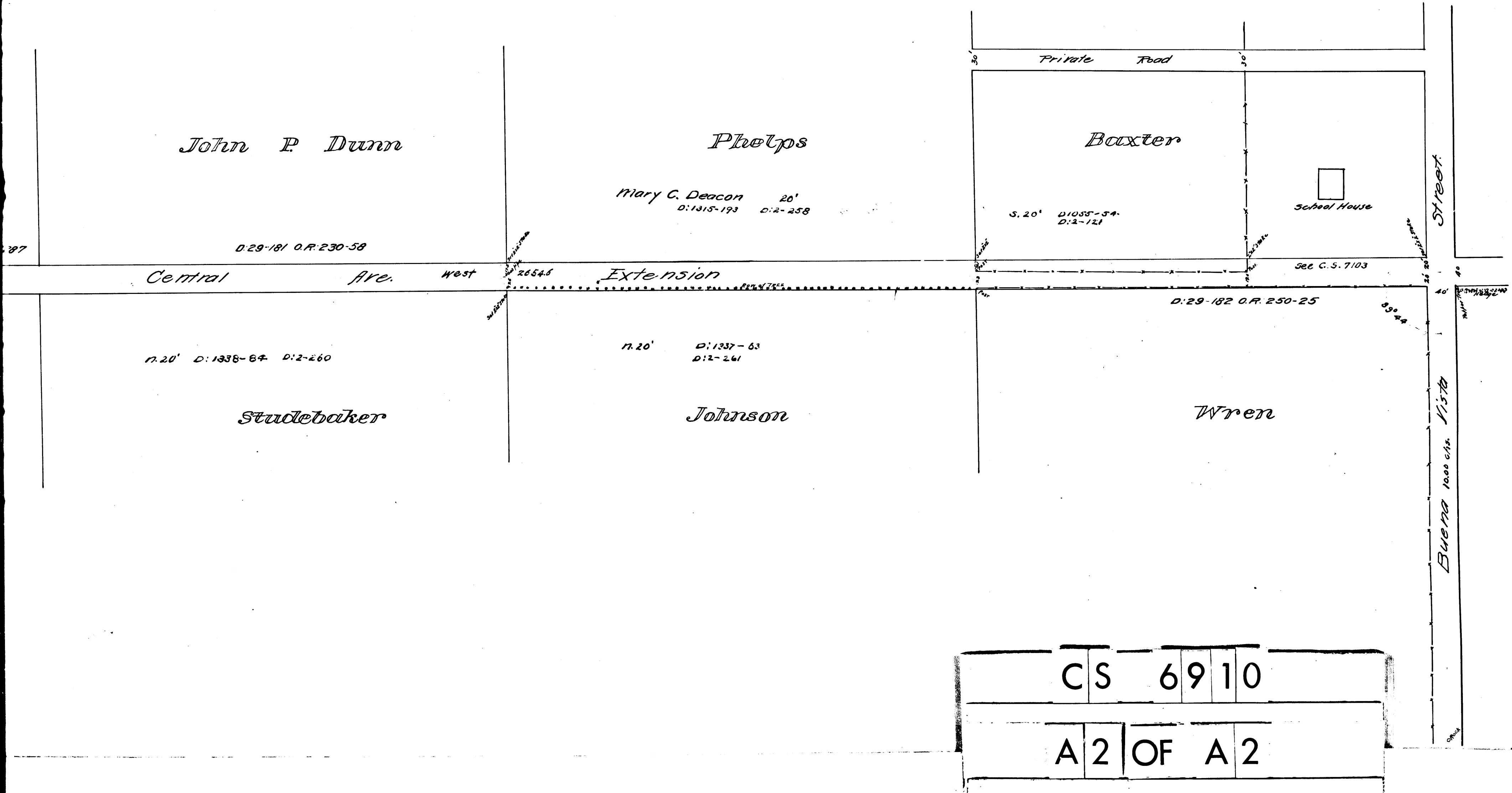
by A. R. Street
 Co. Sur.
 C. S. 6910

Scale 100' to one inch

I. M. 46

Filed Jan. 5, 1895

Road Papers 377



CS 6910

A 2 OF A 2