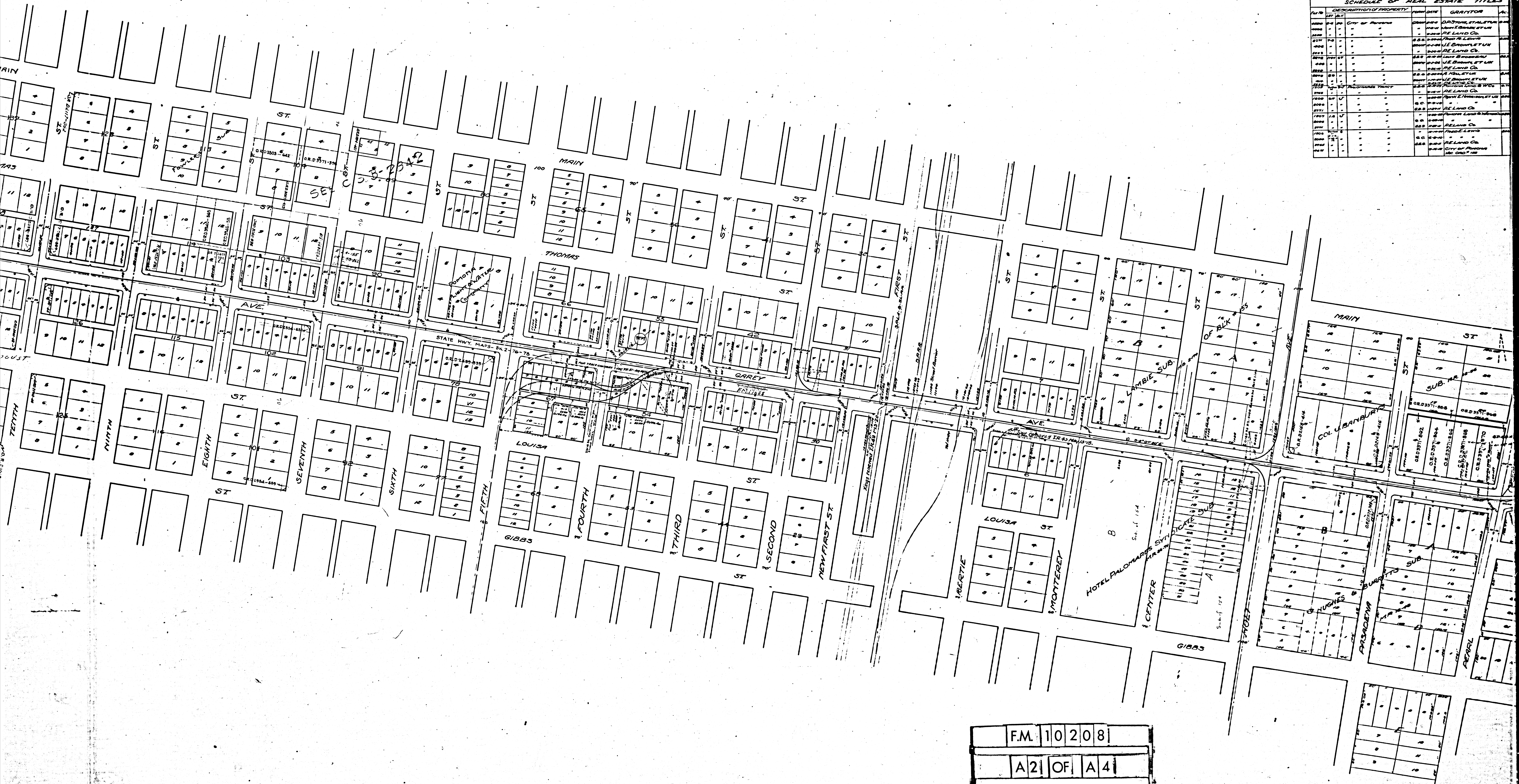




234
77000

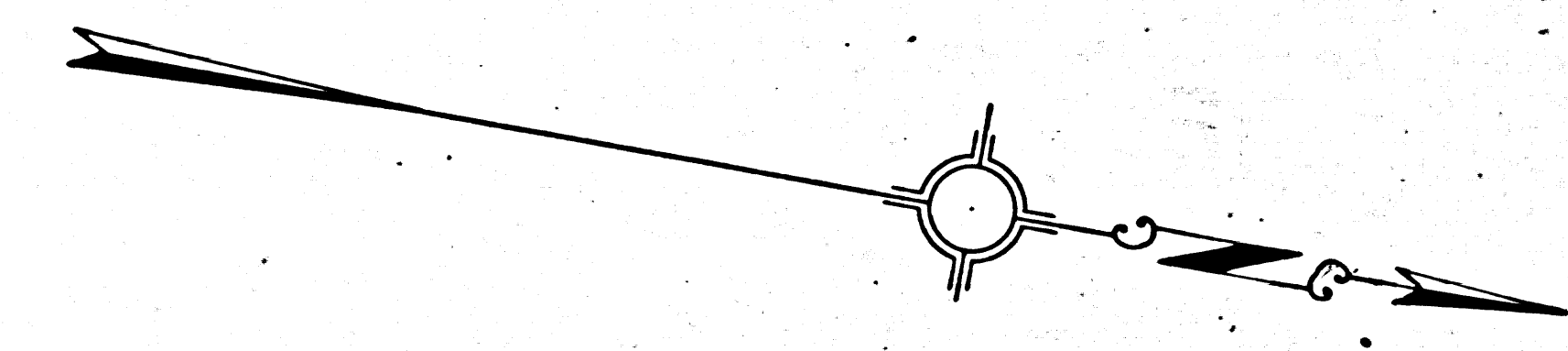
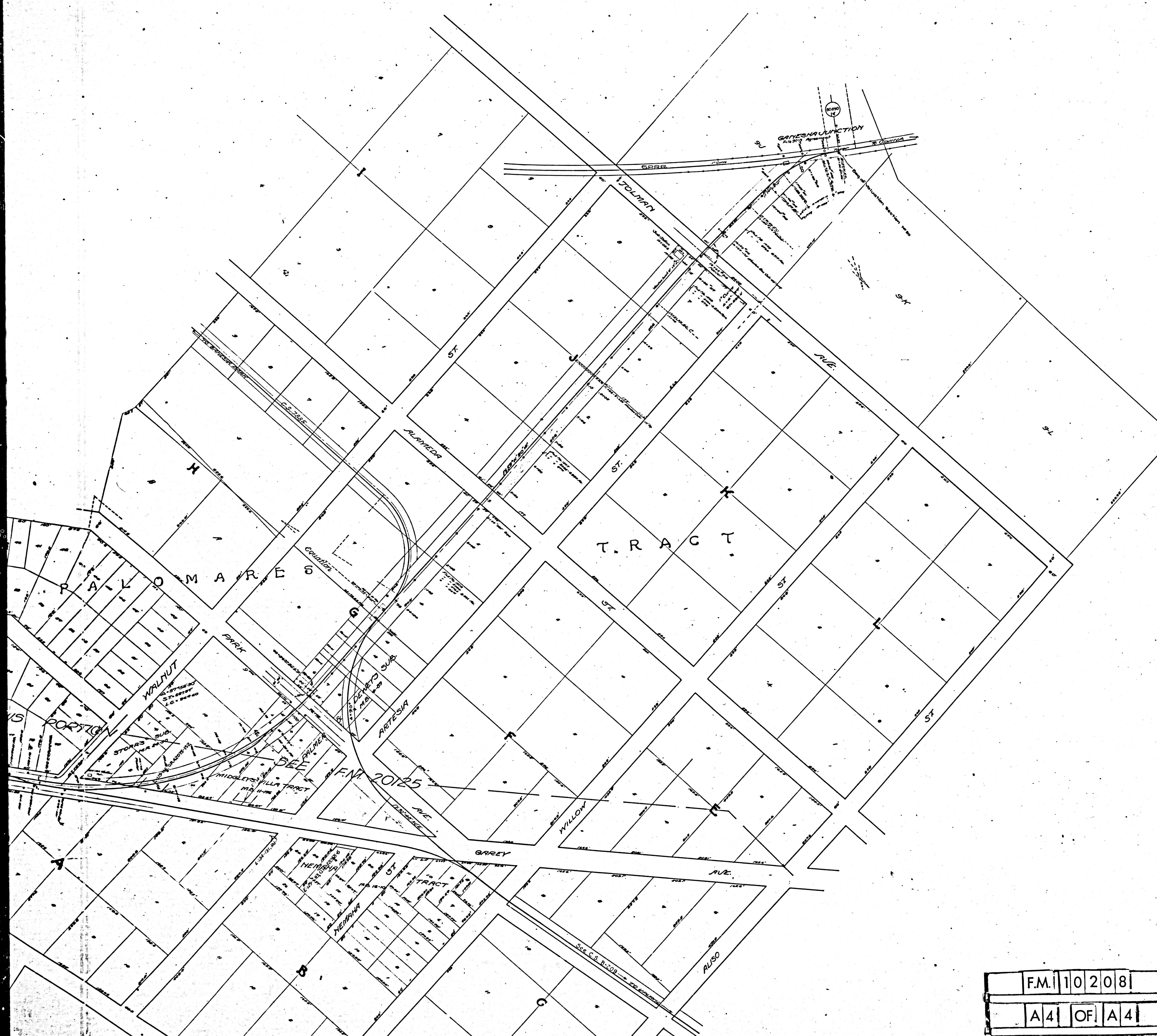
F.M.	10	208
A	11	OF A 4



SCHEDULE OF REAL ESTATE TITLES

PLAT	DESCRIPTION OF PROPERTY	DATE	GRANTOR	REMARKS
1000	CITY OF MONTEREY	1887	GRANTOR, STATE OF CALIF.	
1001	"	1887	"	
1002	"	1887	"	
1003	"	1887	"	
1004	"	1887	"	
1005	"	1887	"	
1006	"	1887	"	
1007	"	1887	"	
1008	"	1887	"	
1009	"	1887	"	
1010	"	1887	"	
1011	"	1887	"	
1012	"	1887	"	
1013	"	1887	"	
1014	"	1887	"	
1015	"	1887	"	
1016	"	1887	"	
1017	"	1887	"	
1018	"	1887	"	
1019	"	1887	"	
1020	"	1887	"	
1021	"	1887	"	
1022	"	1887	"	
1023	"	1887	"	
1024	"	1887	"	
1025	"	1887	"	
1026	"	1887	"	
1027	"	1887	"	
1028	"	1887	"	
1029	"	1887	"	
1030	"	1887	"	
1031	"	1887	"	
1032	"	1887	"	
1033	"	1887	"	
1034	"	1887	"	
1035	"	1887	"	
1036	"	1887	"	
1037	"	1887	"	
1038	"	1887	"	
1039	"	1887	"	
1040	"	1887	"	
1041	"	1887	"	
1042	"	1887	"	
1043	"	1887	"	
1044	"	1887	"	
1045	"	1887	"	
1046	"	1887	"	
1047	"	1887	"	
1048	"	1887	"	
1049	"	1887	"	
1050	"	1887	"	

FM 10 208
 A 2 | OF | A 4



PACIFIC ELECTRIC RAILWAY
 VALUATION SECTION NO. 90
GAREY AVENUE LINE
 FROM GANESHA JUNCTION TO CEMETERY.
 Scale-one inch=100 Ft.

Index 49
 NOTE: This map was filed in 1928
 as authority for track data only

State of California
 County of Los Angeles
 We, the undersigned officers of the Pacific Electric Railway Company, do hereby
 certify that this map is a true and correct map of the Pacific Electric Railway
 Company's GAREY AVENUE LINE, in PASADENA, LOS ANGELES COUNTY, from GANESHA
 JUNCTION to CEMETERY, prepared from records now in the office of said Company.

Attest _____ Secretary _____ President
 _____ Chief Engineer

Corporate Seal

Subscribed and sworn to before me this _____ day of _____

Notary Public in and for the County of
 Los Angeles, State of California

F.M. 10208
 A4 OF A4

PACIFIC ELECTRIC RY
 Office of Chief Engineer
 G.E.V. 69