

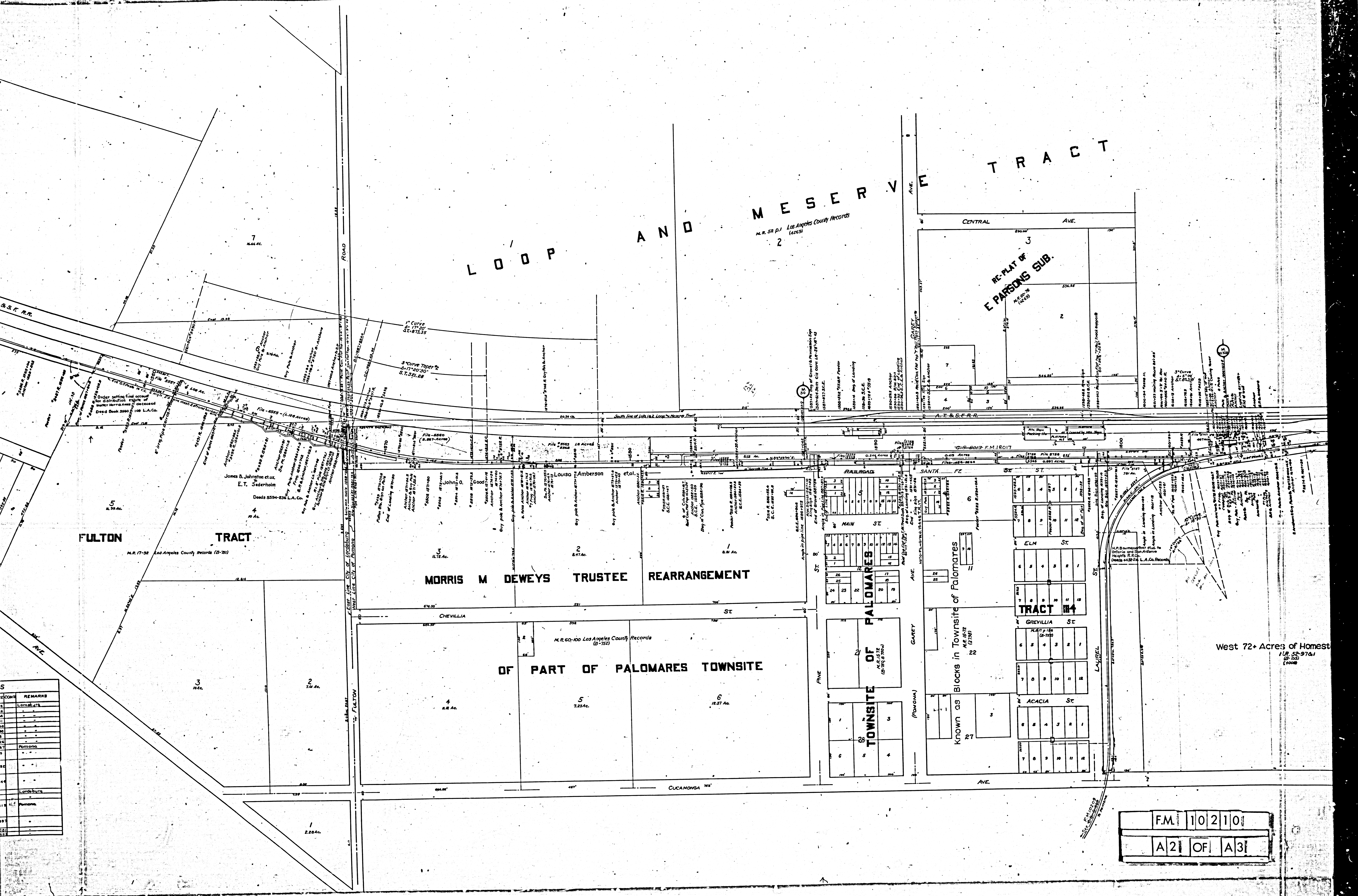


# LOOP AND MESERVO TRACT

M.R. 52 P.1 Los Angeles County Records (1929)  
2

CENTRAL AVE.

RE-PLAT OF  
E. PARSONS SUB.



**FULTON TRACT**  
M.R. 17-32 Los Angeles County Records (9-20)

**MORRIS M DEWEYS TRUSTEE REARRANGEMENT**

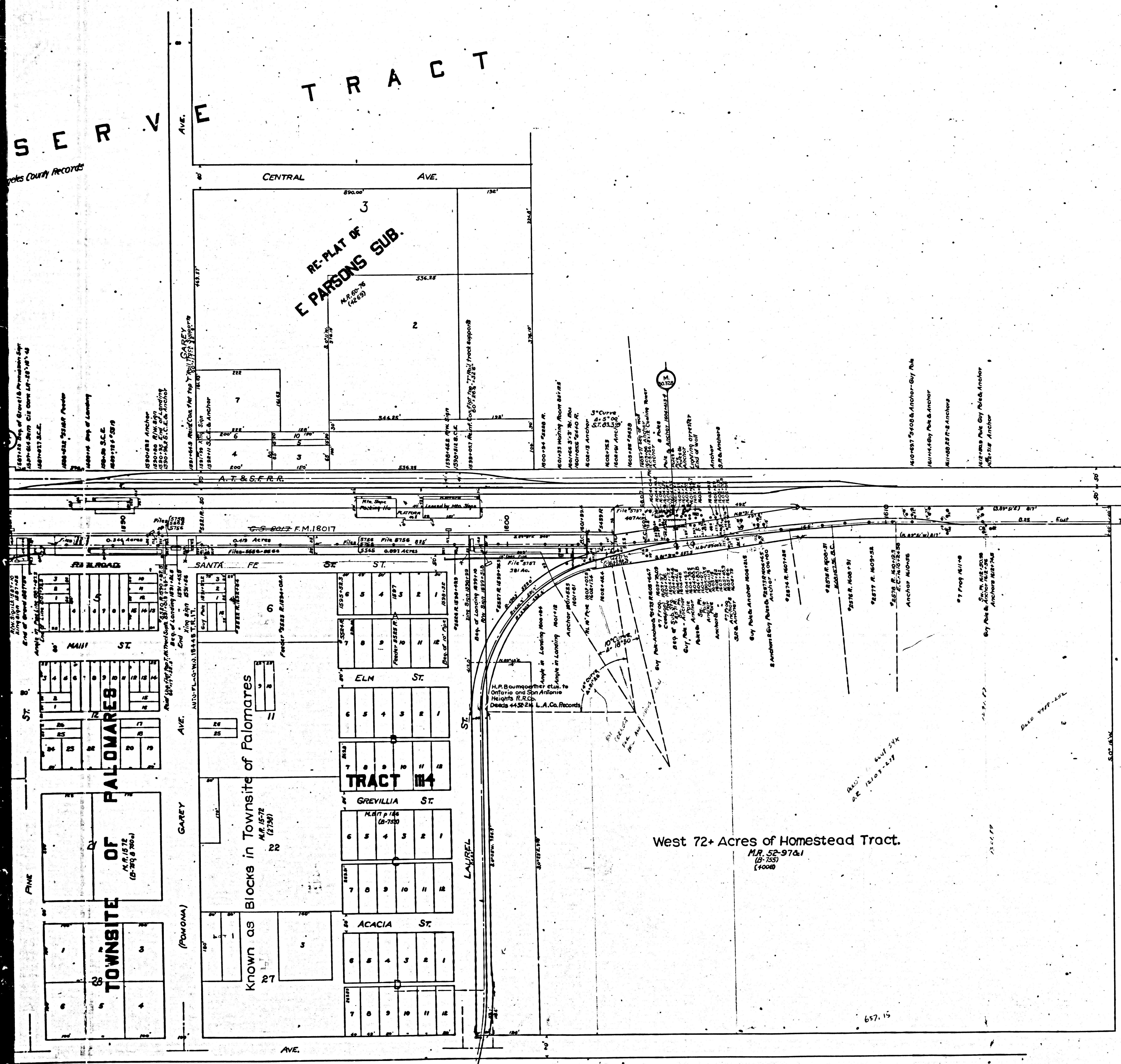
**OF PART OF PALOMARES TOWNSITE**

**TOWNSITE OF PALOMARES**

**TRACT #4**

West 72+ Acres of Homestead  
M.R. 52-976-1  
(9-25)  
(1908)

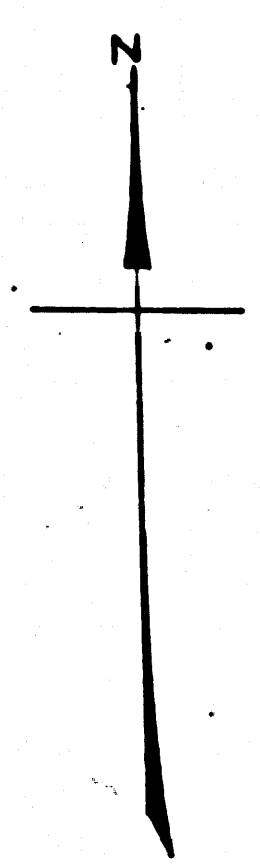
NO.	REMARKS
1	
2	
3	
4	
5	
6	
7	
8	
9	
10	
11	
12	
13	
14	
15	
16	
17	
18	
19	
20	



VALUATION SECTION NO. 87  
**PACIFIC ELECTRIC RAILWAY CO**  
**MAP OF**  
**LORDSBURG NORTH POMONA LINE**

From Junction with Southern Pacific Railroad near "E" Street  
 City of Lordsburg, To Junction with Pacific Electric Railway  
 Line from Pomona to Upland near Laurel Street City of  
 North Pomona

SCALE 1 in = 100 ft.  
 Index 49



State of California } ss.  
 County of Los Angeles }  
 We the undersigned Officers of the Pacific Electric Railway Company do hereby certify  
 that this map is a true and correct map of the Pacific Electric Railway Company's  
 Lordsburg-North Pomona Line, from Junction with Southern Pacific Railroad near "E" Street  
 City of Lordsburg to Junction with Pacific Electric Railway Line from Pomona to Upland  
 near Laurel Street City of North Pomona prepared from Records now in the Office of  
 said Company

Attest \_\_\_\_\_ Secretary  
 \_\_\_\_\_ President  
 \_\_\_\_\_ Chief Engineer

Corporate Seal

Subscribed and Sworn to before me this \_\_\_\_\_ day of \_\_\_\_\_

Notarial Seal

Notary Public in and for the  
 County of Los Angeles State of California

NOTE This map was filed in 1908  
 as authority for track data only

F.M. 10210  
 A3 OF A3

Los Angeles County Records

1897-1917 City of Lordsburg  
 1897-1917 City of North Pomona  
 1897-1917 City of Upland  
 1897-1917 City of Los Angeles

Palomares Townsite  
 (Pomona)

Known as Blocks in Townsite of Palomares  
 M.P. 1578 (2700)

West 72+ Acres of Homestead Tract.  
 M.P. 55-9741 (1000)

657.15